

25 CENTRAL

Recently Refurbished
Office Building in
Downtown Kirkland
w/ Lake Washington Views

Suite 200: 4,816 SF
Available for Lease



BRODERICK
• GROUP •

JIM KINERK
(425) 646-5221
kinerk@broderickgroup.com

AL HODGE
(425) 646-5240
hodge@broderickgroup.com

The information contained herein has been given to us by the owner or sources which we deem reliable. We have no reason to doubt its accuracy, but we do not guarantee it. Prospective tenants should carefully verify all information contained herein.

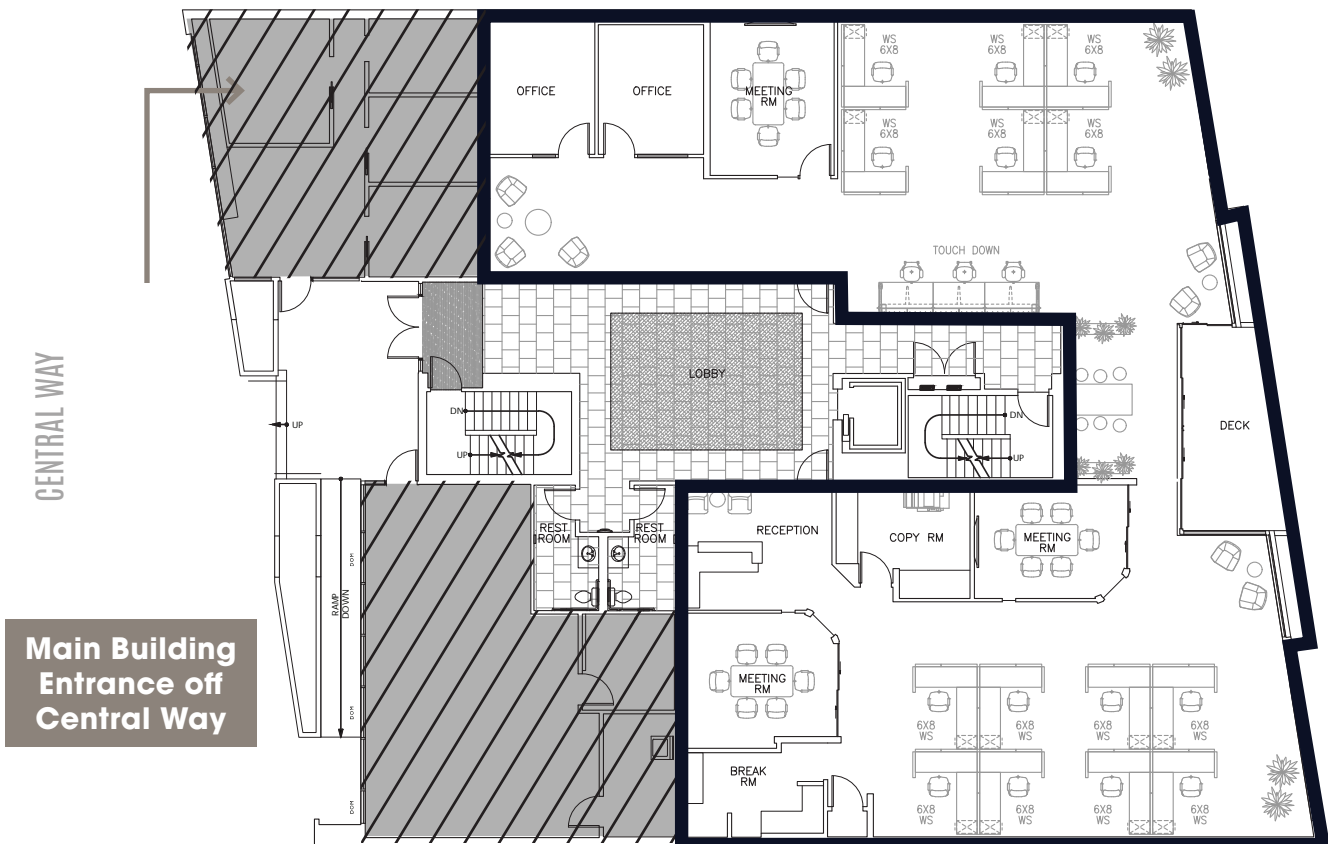
25 CENTRAL

IEWS OF

Marina Park & Lake Washington

SUITE
200 / RSF TOTAL
4,816

- Suite 200 - 4,816 RSF (first floor space)
- Available July 1, 2024
- High visibility space located just off of the building lobby
- Three meeting rooms, two private offices, large open area, break room, copy area and balcony deck with Lake Washington views



25 CENTRAL

RENOVATION Main Lobby



BUILDING DETAILS

- Newly renovated building entrance, lobby and restrooms
- Marina Park and Lake Washington views
- Covered reserved parking spaces
- City of Kirkland parking available nearby
- Internet Providers: Comcast, Frontier, Allstream
- Easy walking to Kirkland retail shops and restaurants

25 CENTRAL

NEARBY Amenities

