

# First Hill Retail

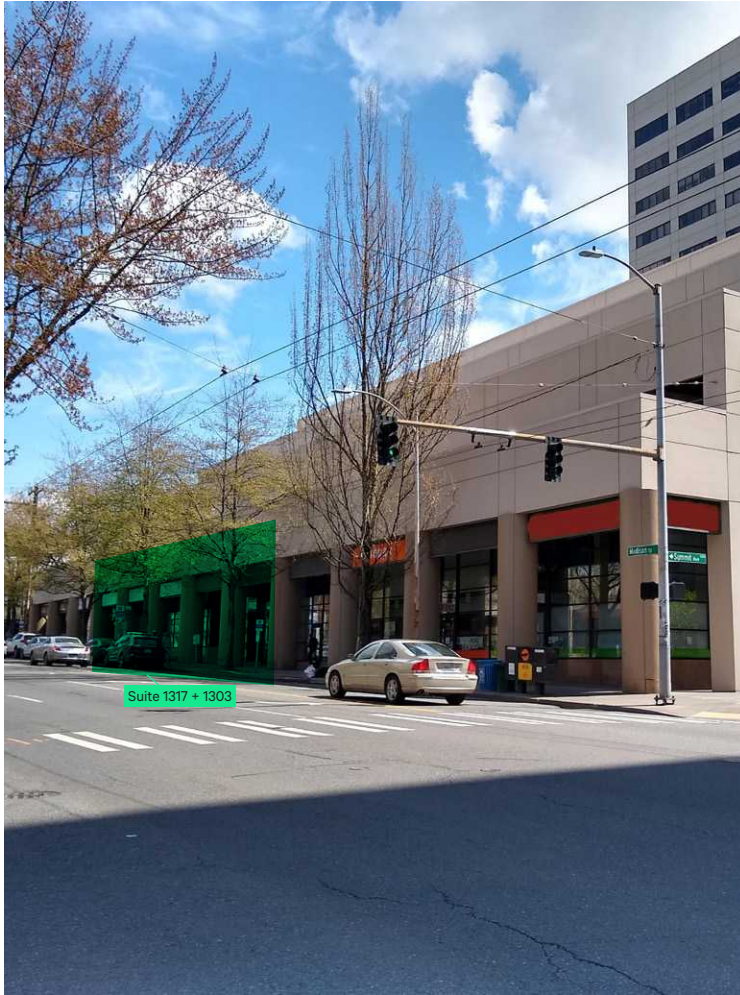
1305 Madison Street

1305 Madison Street  
Seattle, WA 98104



## 1305 Madison Street

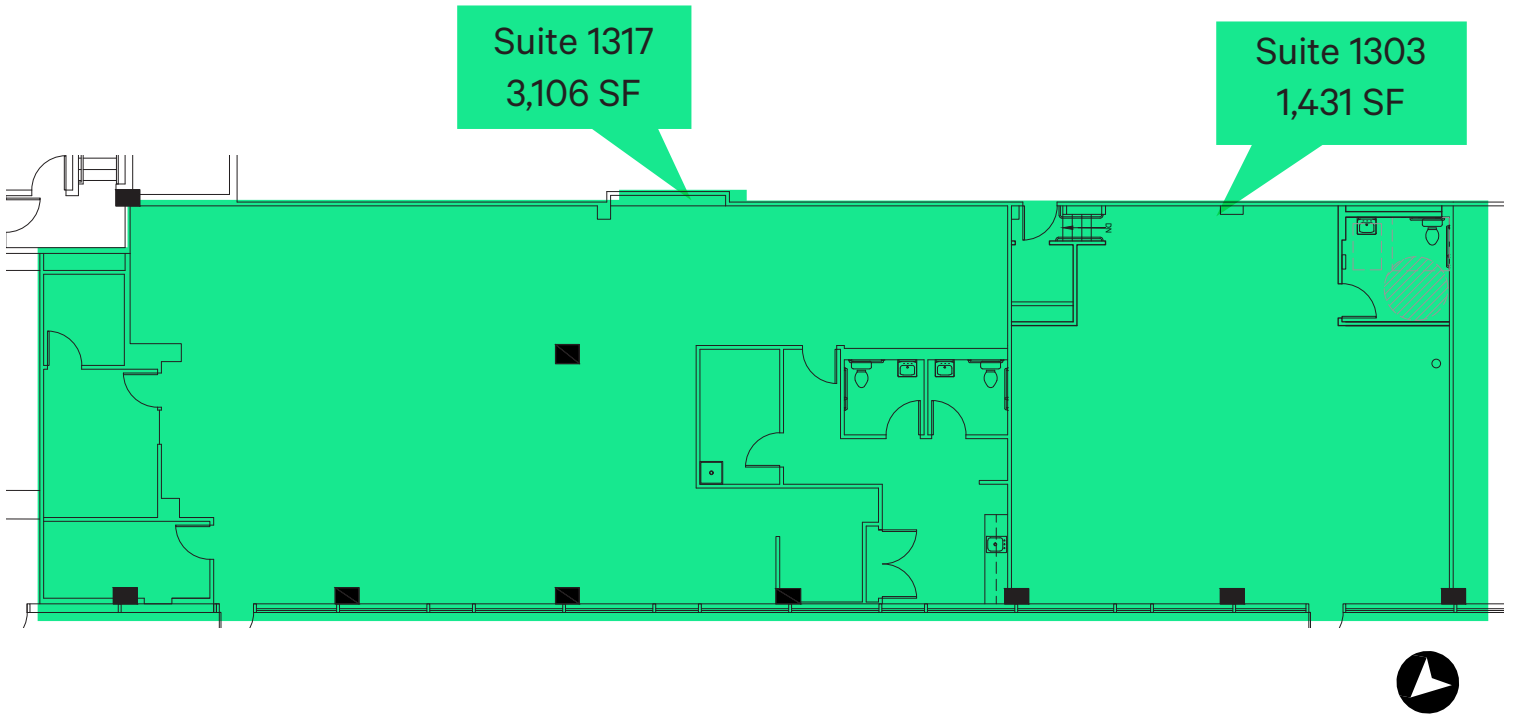
1305 Madison Street | Seattle, WA 98104



## Property Highlights

- Two suites available:
  - Suite 1303 - 1,431 SF - \$32.00 NNN
  - Suite 1317 - 3,106 SF - \$30.00 NNN
- Can be vented for restaurant use
- Prime retail in Seattle's First Hill neighborhood with frontage on Madison Street at the base of the Nordstrom Medical Tower
- Co-tenants include Bartell Drugs, Mad Pizza and Starbucks
- Abundant parking in building
- Two Blocks to Seattle University Campus
- Medical-dominated day population (72,000 within half-mile): including Virginia Mason Hospital and Medical Center, Polyclinic, Swedish Medical Center, and Harborview Medical Center
- Traffic counts in excess of 23,000 vehicles per day





	0.5 mile	1 mile	2 mile
Population	26,758	92,886	184,364
Daytime Population	72,148	231,197	360,745
Average Household Income	\$125,779	\$138,662	\$160,690
No. of Employees	59,335	189,966	271,047
2018 Traffic Counts**	20,647 AADT		

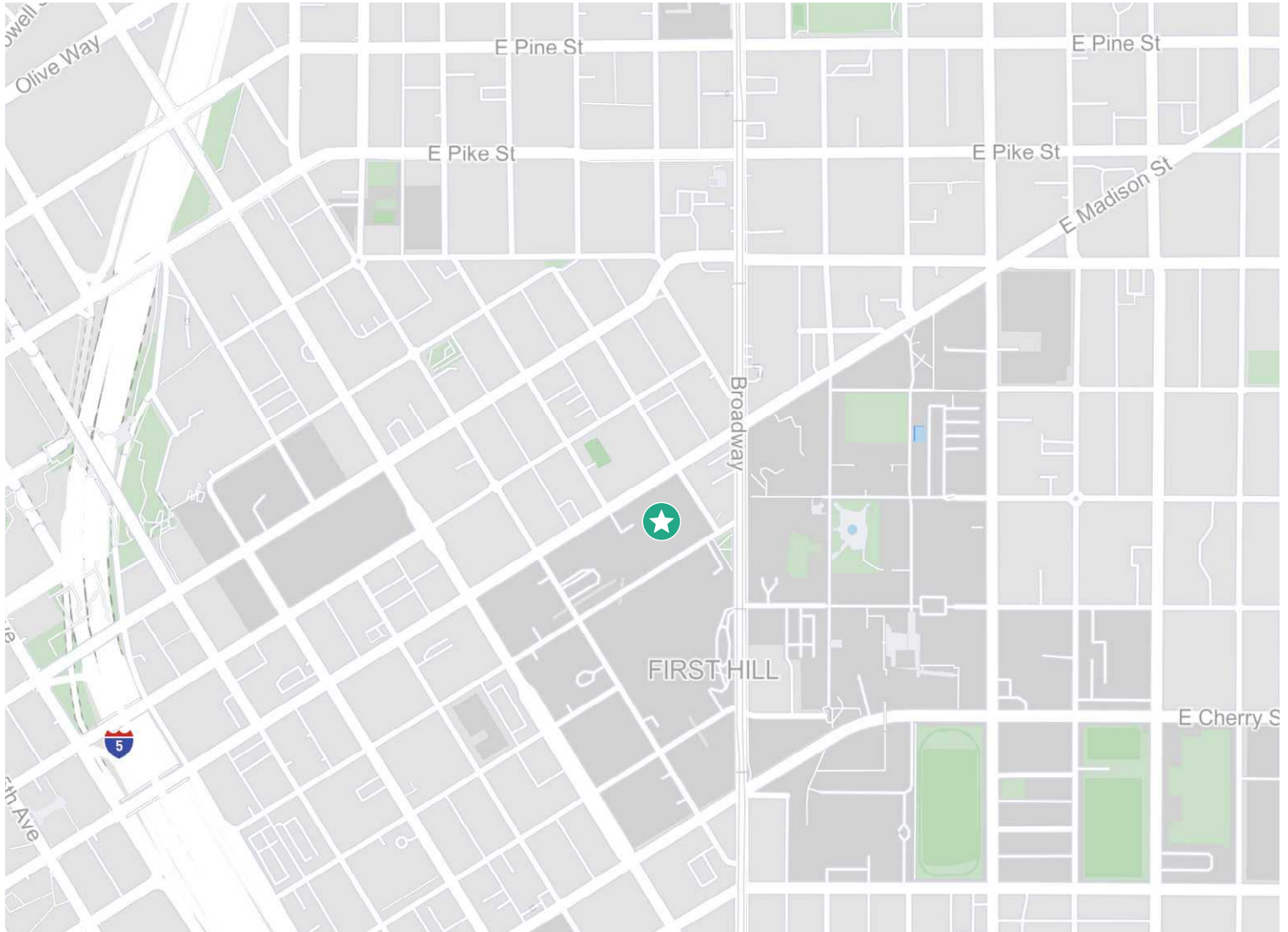
\*ESRI 2022

\*\* 2018 Seattle Department of Transportation Traffic Flow Data

# 1305 Madison Street

1305 Madison Street | Seattle, WA 98104

# Retail | For Lease



## Contact Us

### Dan McGinnis

First Vice President  
+1 206 949 8497  
dan.mcginis@cbre.com

### Ryan Brunette

Associate  
+1 206 794 9199  
ryan.brunette@cbre.com

© 2023 CBRE, Inc. All rights reserved. This information has been obtained from sources believed reliable, but has not been verified for accuracy or completeness. You should conduct a careful, independent investigation of the property and verify all information. Any reliance on this information is solely at your own risk. CBRE and the CBRE logo are service marks of CBRE, Inc. All other marks displayed on this document are the property of their respective owners, and the use of such logos does not imply any affiliation with or endorsement of CBRE. Photos herein are the property of their respective owners. Use of these images without the express written consent of the owner is prohibited. 4-18-24 AS