

18911 & 19015 NORTH CREEK PARKWAY
BOTHELL, WASHINGTON

BRODERICK
• GROUP •



PLAZA @ NORTH CREEK

7,500 – 50,346 SF AVAILABLE

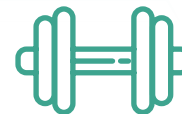


PLAZA @ NORTH CREEK

PROPERTY HIGHLIGHTS



CLASS A OFFICE / TECH
CAMPUS WITH SECURITY /
CARD KEY ACCESS



NEW TENANT AMENITY EXERCISE
FACILITY, SHOWERS, LOCKERS, AND
BIKE STORAGE



RESTAURANTS, DELICATESSEN,
JOGGING & WALKING TRAILS,
& NORTHSORE YMCA WITHIN
WALKING DISTANCE



4-5/1,000 SF PARKING RATIO;
EXCELLENT ACCESS & FREEWAY
VISIBILITY (I-405 & SR-522) WITH
ELECTRIC VEHICLE CHARGING STATIONS



HOTELS WITHIN WALKING
DISTANCE (WYNDHAM GARDEN
HOTEL & RESIDENCE INN)



FIBER SERVICES ARE PROVIDED BY
FRONTIER FIOS. CABLE PROVIDED
BY COMCAST. ADDITIONAL TELECOM
SERVICES PROVIDED BY VERIZON,
AT&T & ACCESS TELEPHONE
SOLUTIONS, INC.

PLAZA @ NORTH CREEK

AVAILABLE SPACE

SPACE	SIZE	AVAILABLE	NOTES
EAST BUILDING · 18911 NORTH CREEK PARKWAY, BOTHELL, WA			
 Floor 2	7,500 – 34,226 RSF	NOW	Full Floor Opportunity. Divisible to 7,500 SF.
Suite 100	16,120 RSF	NOW	Furnished
FLOORS 1 & 2 CAN BE COMBINED FOR A TOTAL OF 50,346 RSF			

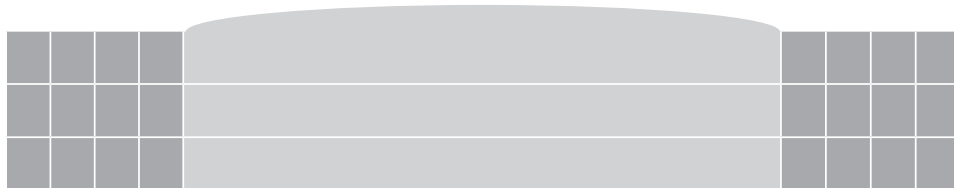
NORTH BUILDING · 19015 NORTH CREEK PARKWAY, BOTHELL, WA

100% Leased

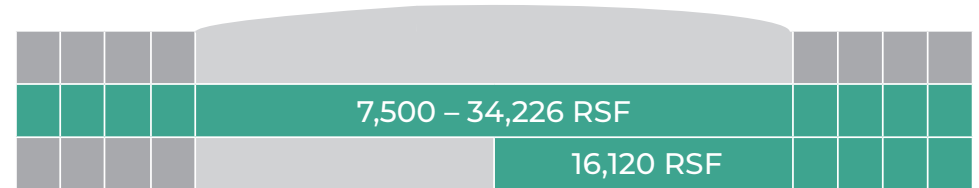
TOTAL SQUARE FOOTAGE AVAILABLE: 50,346 RSF

PLAZA @ NORTH CREEK

NORTH BUILDING 100% LEASED



EAST BUILDING



50,346 RSF TOTAL AVAILABLE

PLAZA @ NORTH CREEK

EAST BUILDING

18911 NORTH CREEK PKWY
BOTHELL, WA

TYLER SLONE

425.274.4281

slone@broderickgroup.com

PAUL JERUE

425.646.5223

jerue@broderickgroup.com

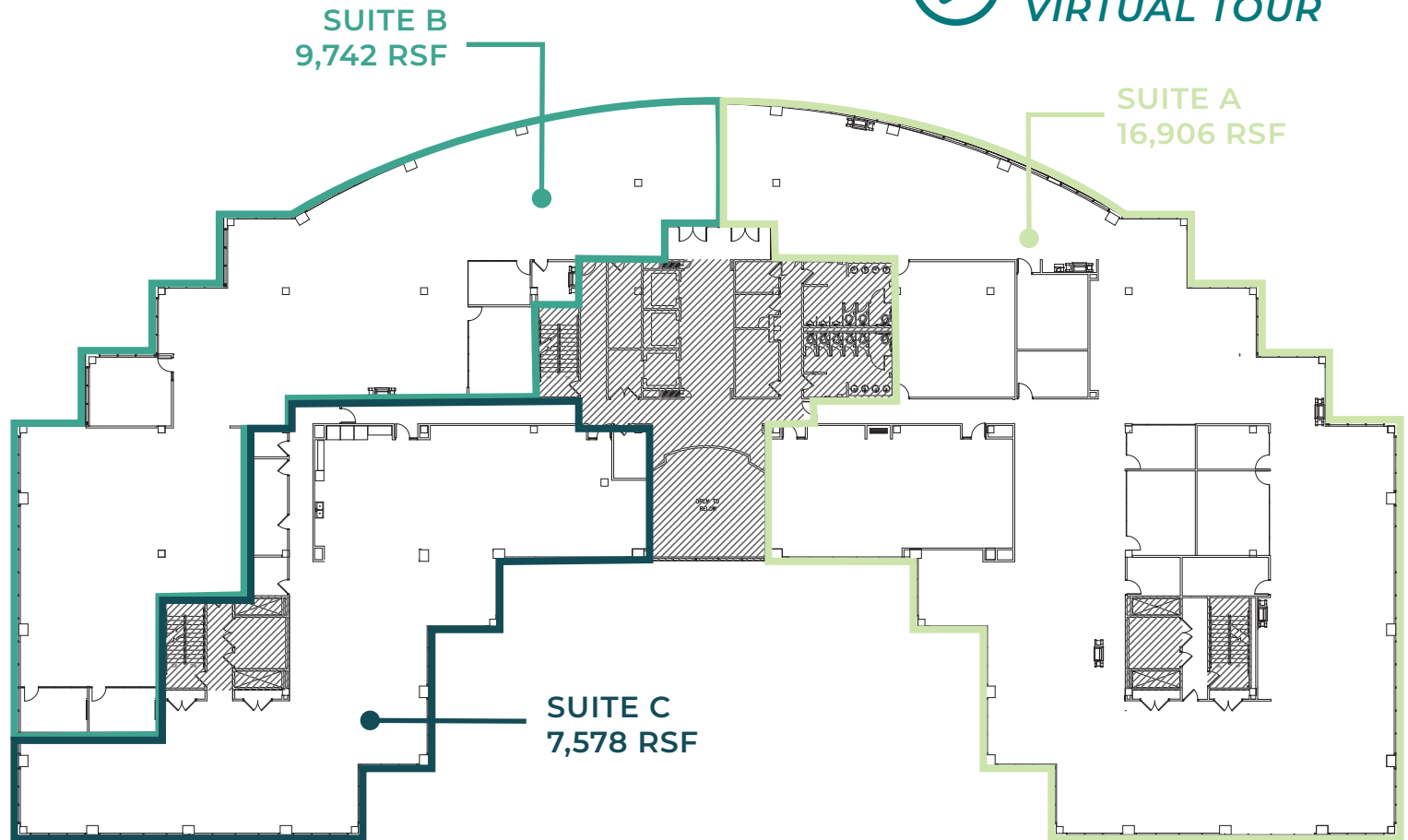
BRODERICK
• GROUP •

FLOOR PLAN

FLOOR 2 | 7,500 – 34,226 RSF | AVAILABLE NOW



CLICK TO VIEW
VIRTUAL TOUR



PLAZA @ NORTH CREEK

EAST BUILDING

18911 NORTH CREEK PKWY
BOTHELL, WA

TYLER SLONE

425.274.4281

slone@broderickgroup.com

PAUL JERUE

425.646.5223

jerue@broderickgroup.com

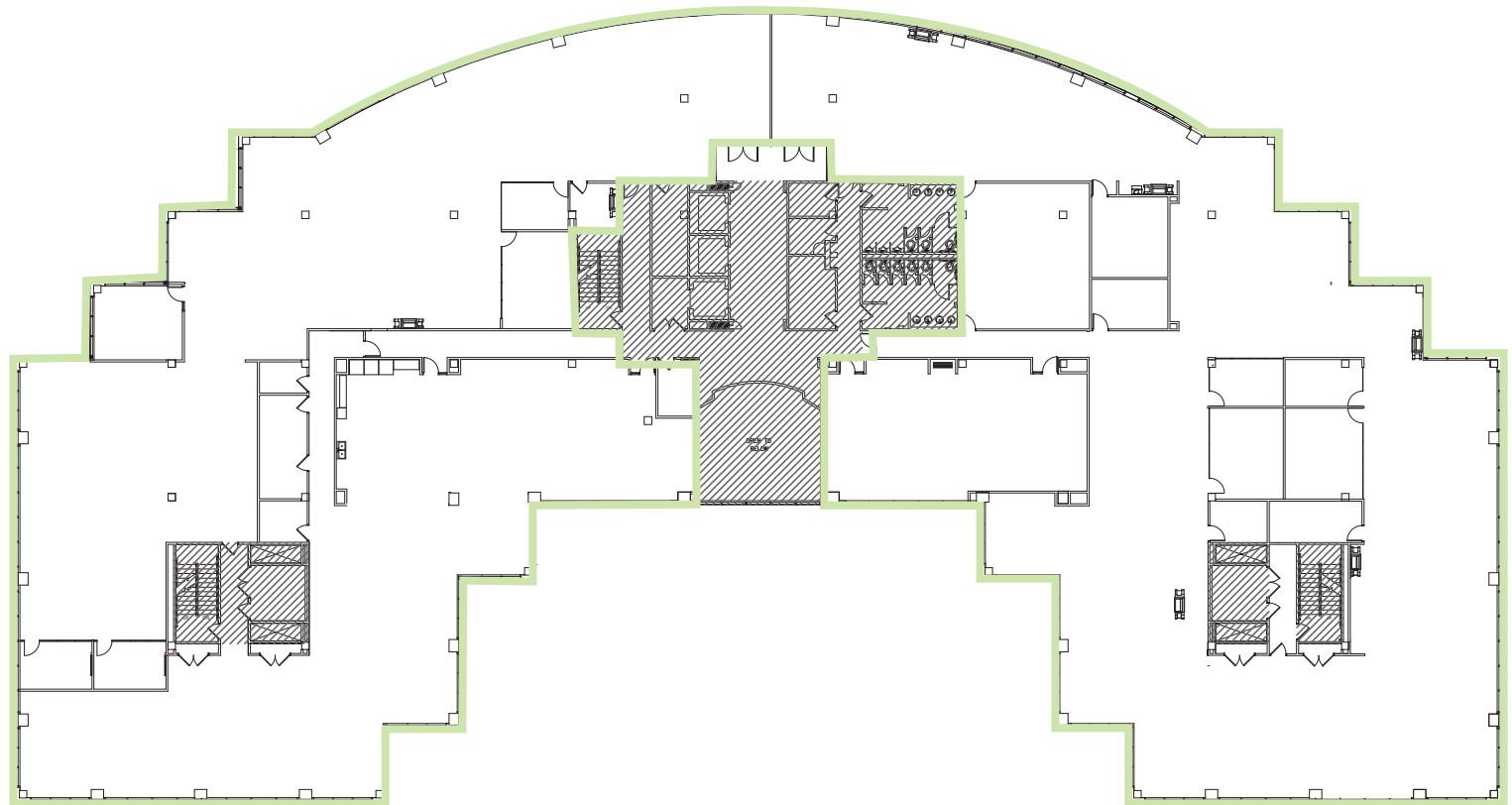
BRODERICK
• GROUP •

FLOOR PLAN

FLOOR 2 | 34,226 RSF | AVAILABLE NOW



**CLICK TO VIEW
VIRTUAL TOUR**



PLAZA @ NORTH CREEK

EAST BUILDING

18911 NORTH CREEK PKWY
BOTHELL, WA



TYLER SLONE

425.274.4281

slone@broderickgroup.com

PAUL JERUE

425.646.5223

jerue@broderickgroup.com

BRODERICK
• GROUP •



FLOOR PLAN

SUITE 100 | 16,120 RSF | AVAILABLE NOW
FURNISHED

