



# REDMOND 87

16101 NE 87TH STREET  
REDMOND, WA 98052

PACIFIC ASSET ADVISORS, INC.



## LISTING DETAILS



*RENTABLE SF*  
**16,886 SF**

**CALL  
FOR  
RATE**

**ADDRESS:** 16101 NE 87th Street  
Redmond, WA 98052

**SPACE AVAILABLE:** Former Together Center  
(10,958 SF)  
Former Goodyear (5,928 SF)

**SURROUNDING  
AREA:** QFC, Regal Cinema,  
Evergreen Health,  
MOD Pizza, Starbucks...

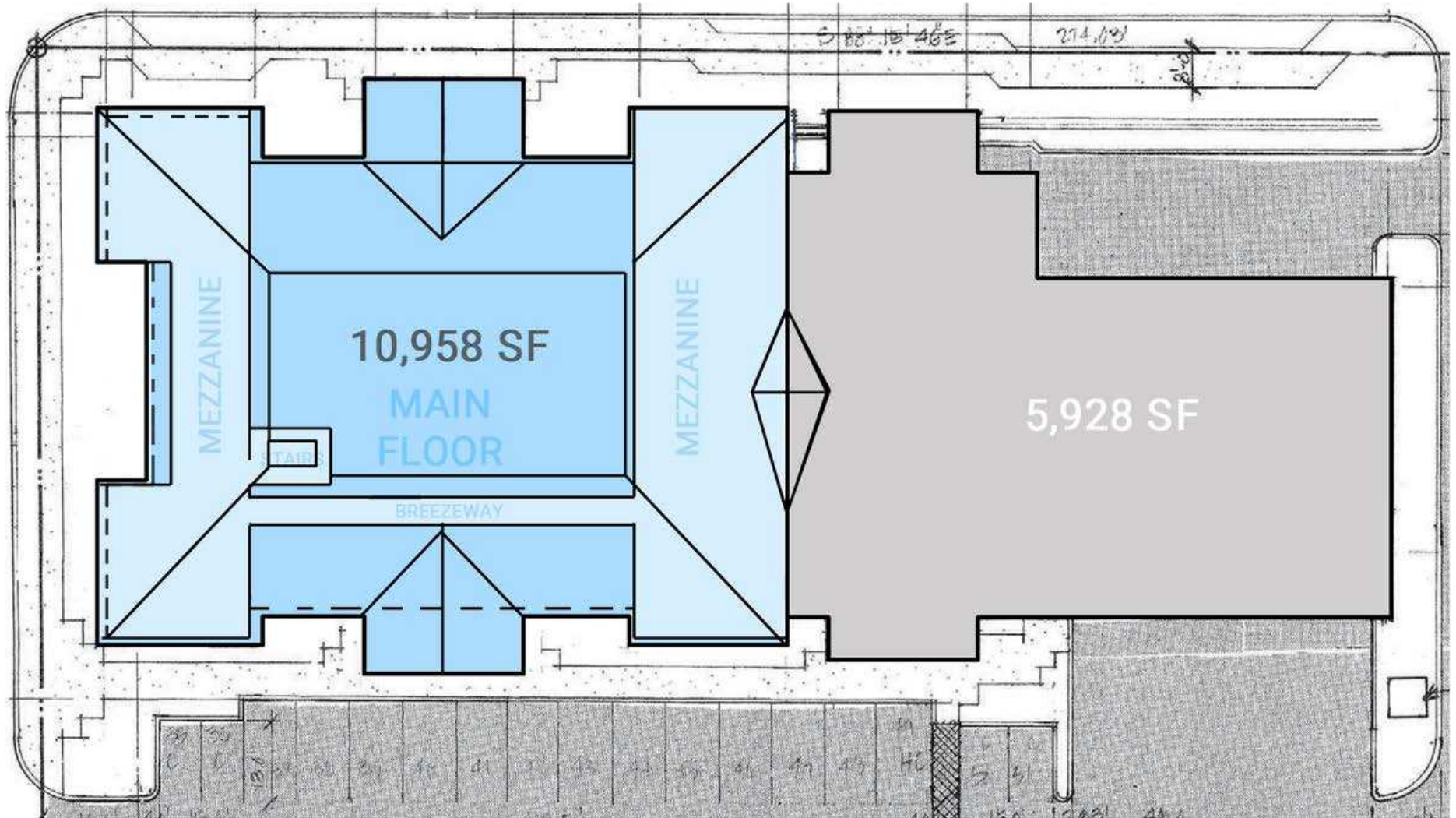
	1 MILE	3 MILES	5 MILES
<b>MEDIAN INCOME:</b>	\$159,564	\$178,538	\$174,389
<b>TOTAL POPULATION:</b>	23,212	96,646	243,448
<b>DAYTIME POPULATION:</b>	19,038	68,543	188,755

425.990.6200 | PAADVISORS.COM





# SITE PLAN









# CONTACT



**ADAM GREENBERG**  
SENIOR VICE PRESIDENT  
PARTNER  
425.503.1339  
ADAM@PAADVISORS.COM



**TYSON CLARKE**  
SENIOR VICE PRESIDENT  
PARTNER  
360.319.4855  
TYSON@PAADVISORS.COM

**PACIFIC ASSET ADVISORS, INC.**  
THE PREMIER CHOICE OF THE PACIFIC NORTHWEST

14205 SE 36TH ST, SUITE 215, BELLEVUE, WA 98006