

FOR SUBLEASE

EMERGENCY MEDICAL TREATMENT FACILITY

2150 FREEMAN RD E
FIFE, WA 98424



EMERGENCY MEDICAL TREATMENT FACILITY



PROPERTY HIGHLIGHTS

- EMT facility with 16 beds

- Standalone 14,509 SF building

- Spacious reception and waiting room area

- Licensed emergency medical treatment facility

- Ample on-site parking making it convenient for patients and staff

- Single tenant opportunity

- Sublease through November 30, 2029

- Call for rates

WILL FRAME

253.722.1412
will.frame@kidder.com

DREW FRAME

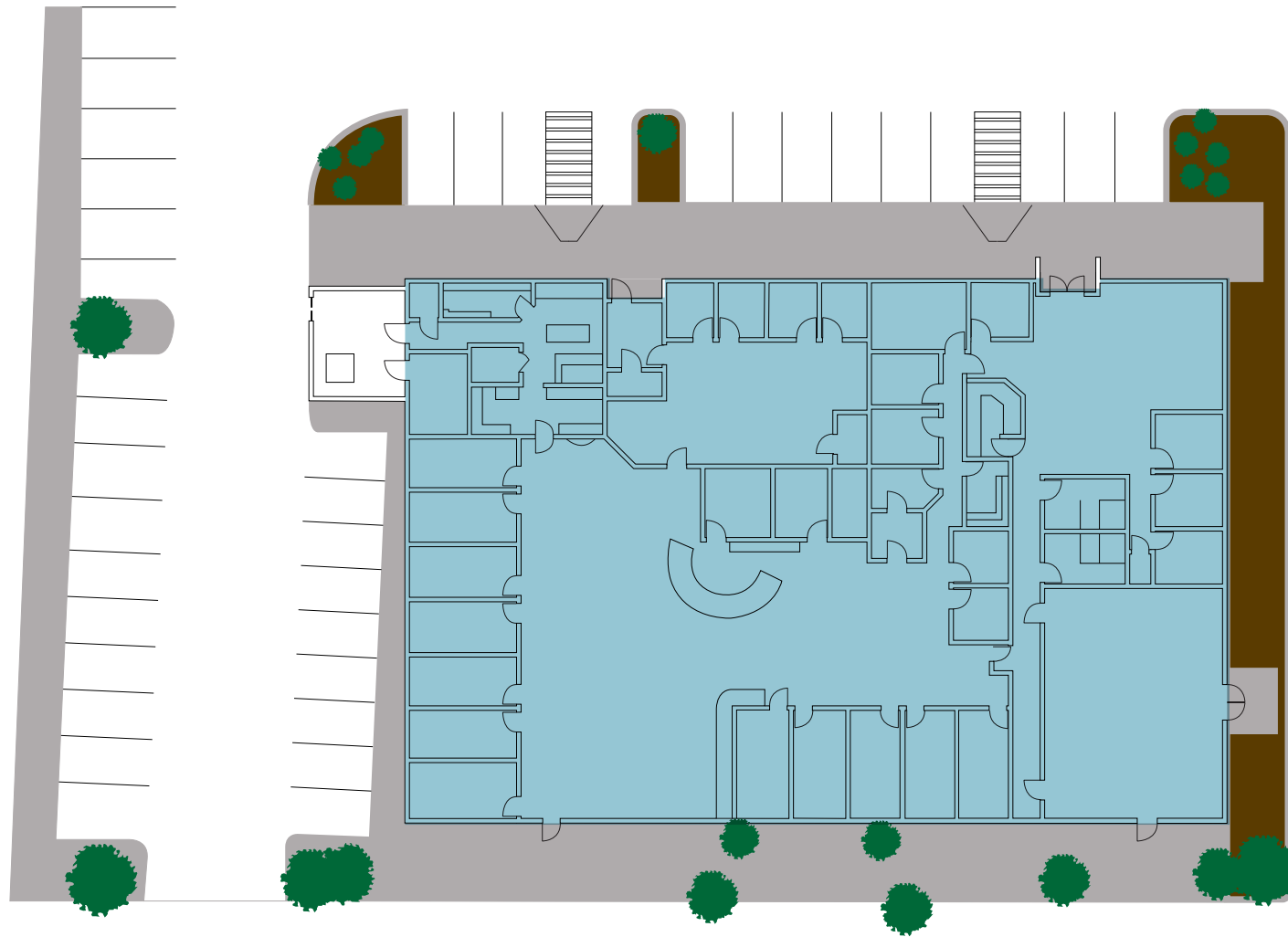
253.722.1433
drew.frame@kidder.com

KIDDER.COM

This information supplied herein is from sources we deem reliable. It is provided without any representation, warranty, or guarantee, expressed or implied as to its accuracy. Prospective Buyer or Tenant should conduct an independent investigation and verification of all matters deemed to be material, including, but not limited to, statements of income and expenses. Consult your attorney, accountant, or other professional advisor.



FLOOR PLAN



KIDDER.COM

This information supplied herein is from sources we deem reliable. It is provided without any representation, warranty, or guarantee, expressed or implied as to its accuracy. Prospective Buyer or Tenant should conduct an independent investigation and verification of all matters deemed to be material, including, but not limited to, statements of income and expenses. Consult your attorney, accountant, or other professional advisor.