



PUYALLUP MEDICAL CLINIC

*6,566 SF Single Story Medical
Office Building Available Now*

800 S MERIDIAN, PUYALLUP, WA 98371

PUYALLUP MEDICAL CLINIC



PROPERTY HIGHLIGHTS

Suite A 4,773 SF medical clinic with 14 exam rooms

Suite B 1,793 SF medical clinic

Suite A & B can be combined to total 6,566 SF (entire building)

Synergy join the expansive medical hub of Good Samaritan Hospital

Great exposure on S Meridian & easy access to SR-512

Ample parking for medical users at 9/1,000 RSF

Located in downtown Puyallup with immediate access to Good Samaritan Hospital

Sublease through January 31, 2026

WILL FRAME

253.722.1412

will.frame@kidder.com

DREW FRAME

253.722.1433

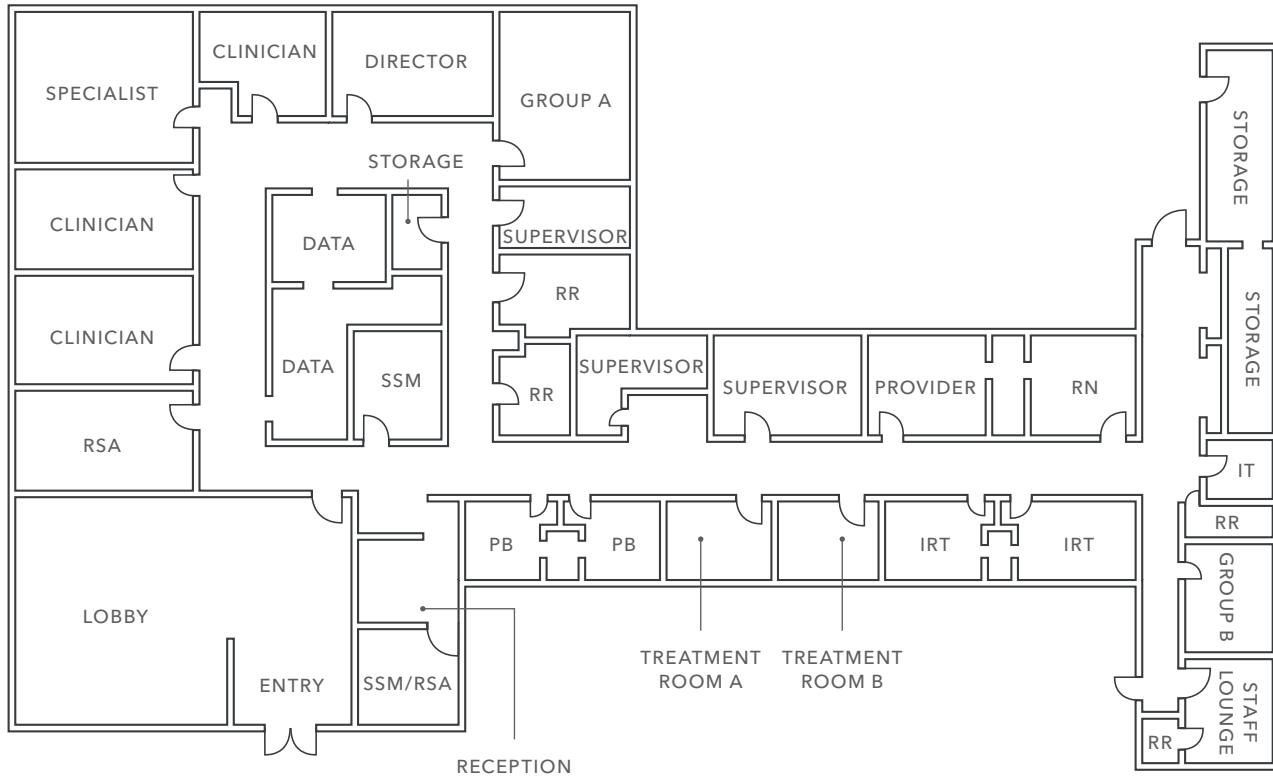
drew.frame@kidder.com

KIDDER.COM

This information supplied herein is from sources we deem reliable. It is provided without any representation, warranty, or guarantee, expressed or implied as to its accuracy. Prospective Buyer or Tenant should conduct an independent investigation and verification of all matters deemed to be material, including, but not limited to, statements of income and expenses. Consult your attorney, accountant, or other professional advisor.



SUITE A



4,773 SF

AVAILABLE

PRICE

CONTACT BROKERS

NOW

AVAILABLE

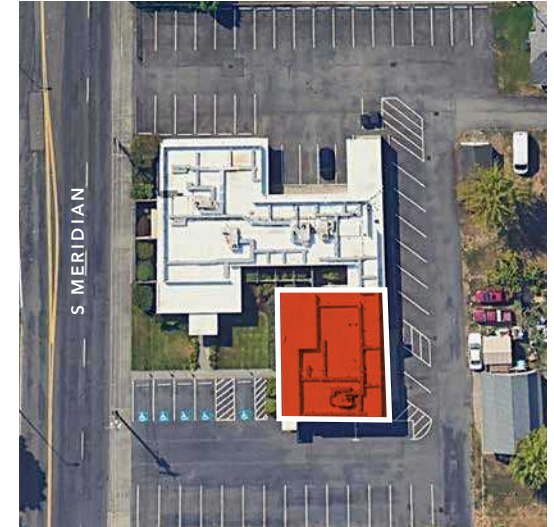
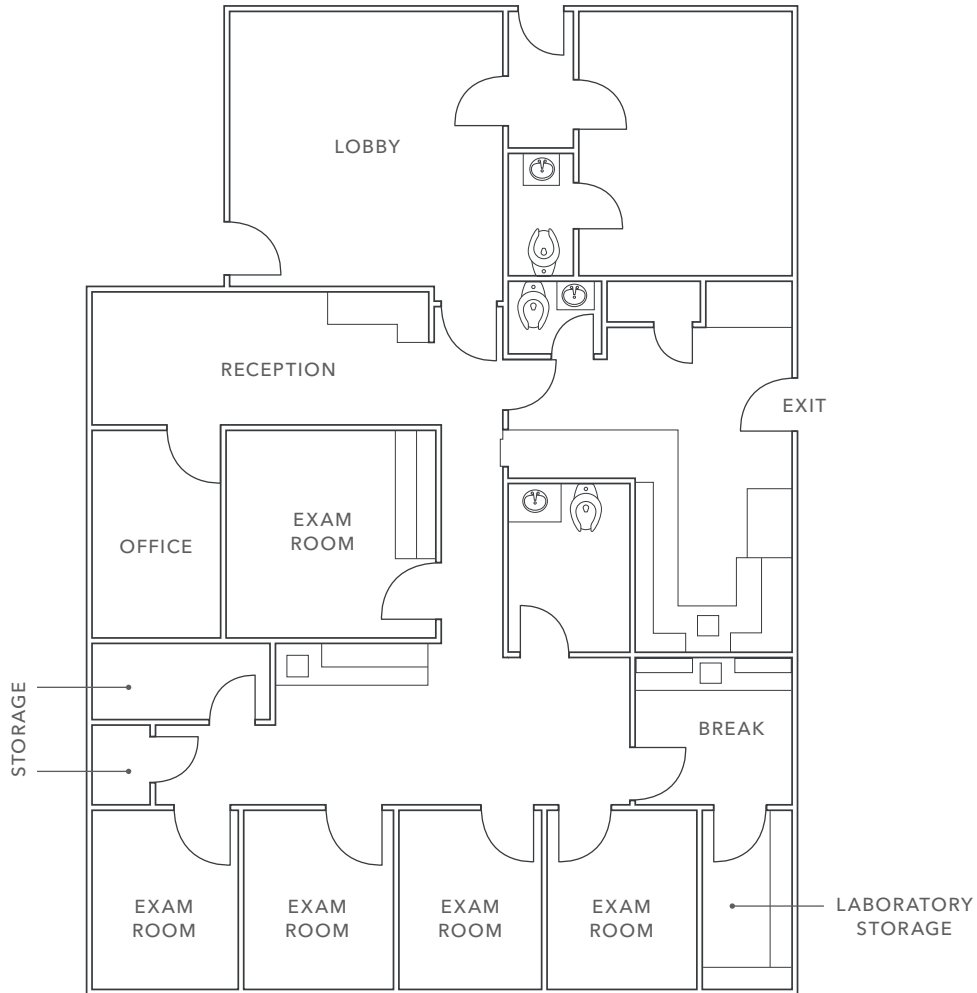


KIDDER.COM

This information supplied herein is from sources we deem reliable. It is provided without any representation, warranty, or guarantee, expressed or implied as to its accuracy. Prospective Buyer or Tenant should conduct an independent investigation and verification of all matters deemed to be material, including, but not limited to, statements of income and expenses. Consult your attorney, accountant, or other professional advisor.



SUITE B



1,793 SF

AVAILABLE

PRICE

CONTACT BROKERS

NOW

AVAILABLE

KIDDER.COM

This information supplied herein is from sources we deem reliable. It is provided without any representation, warranty, or guarantee, expressed or implied as to its accuracy. Prospective Buyer or Tenant should conduct an independent investigation and verification of all matters deemed to be material, including, but not limited to, statements of income and expenses. Consult your attorney, accountant, or other professional advisor.



PUYALLUP MEDICAL CLINIC



KIDDER.COM

This information supplied herein is from sources we deem reliable. It is provided without any representation, warranty, or guarantee, expressed or implied as to its accuracy. Prospective Buyer or Tenant should conduct an independent investigation and verification of all matters deemed to be material, including, but not limited to, statements of income and expenses. Consult your attorney, accountant, or other professional advisor.



PUYALLUP MEDICAL CLINIC

21 MIN

TACOMA

30 MIN

FEDERAL WAY

25 MIN

LAKESIDE



KIDDER.COM

This information supplied herein is from sources we deem reliable. It is provided without any representation, warranty, or guarantee, expressed or implied as to its accuracy. Prospective Buyer or Tenant should conduct an independent investigation and verification of all matters deemed to be material, including, but not limited to, statements of income and expenses. Consult your attorney, accountant, or other professional advisor.

