

951 MONSTER ROAD  
RENTON, WA 98057



# North 405 Distribution Center

**123,675 SF Space  
For Lease**

**CBRE**

**AVAILABLE 4/1/2025**

# Building Specifications

Available Now

## Spec Details

---

123,675 SF Shell	Standalone, High Image Building
------------------	---------------------------------

---

16,466 SF Main Office	17 Dock High Doors
-----------------------	--------------------

---

2,540 SF Shipping Office	2 Drive-In Doors
--------------------------	------------------

---

19,006 SF Office Total	30' Clear Height
------------------------	------------------

---

Fully fenced and secured building and truck court	ESFR
---------------------------------------------------	------

---

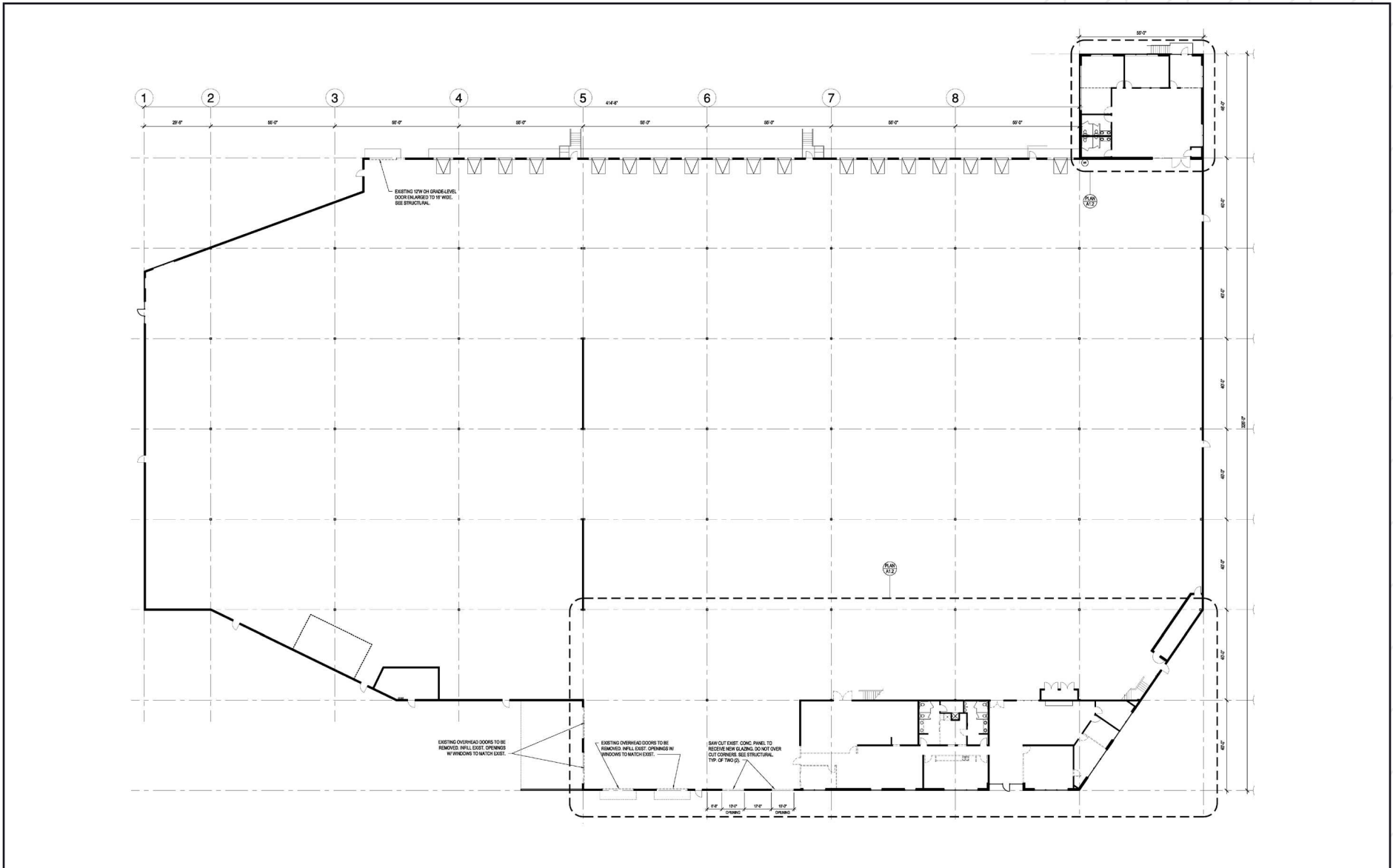
Available April 1, 2025

---



# Floor Plan

123,675 SF





# Aerial Map

951 Monster Rd | Renton, WA

Downtown Bellevue

Downtown Seattle



## Distance

- + Seattle - 11 Miles
- + SeaTac - 4.6 Miles
- + Bellevue - 13.4 Miles

599

5

405

SeaTac Airport

167







951 MONSTER ROAD  
RENTON, WA 98057



# North 405 Distribution Center

**123,675 SF Space  
For Lease**

**John Gilliland**  
Senior Vice President  
+1206 226 7930  
john.gilliland@cbre.com

**Andrew Hitchcock**  
Executive Vice President  
+1206 310 9044  
andrew.hitchcock@cbre.com



© 2024 CBRE, Inc. All rights reserved. This information has been obtained from sources believed reliable but has not been verified for accuracy or completeness. CBRE, Inc. makes no guarantee, representation or warranty and accepts no responsibility or liability as to the accuracy, completeness, or reliability of the information contained herein. You should conduct a careful, independent investigation of the property and verify all information. Any reliance on this information is solely at your own risk. CBRE and the CBRE logo are service marks of CBRE, Inc. All other marks displayed on this document are the property of their respective owners, and the use of such marks does not imply any affiliation with or endorsement of CBRE. Photos herein are the property of their respective owners. Use of these images without the express written consent of the owner is prohibited. MK4.12.24