

FOR LEASE

5930 4TH AVENUE S

SEATTLE, WA

*Price reduced to \$1.05/SF,
blended, NNN*

100,000 SF available

5,040 SF ground floor office/showroom

5,040 SF second floor office

Divisible to 20,000 SF

19 dock-high doors

24' clear height

Ample parking

JIM KIDDER, SIOR
206.248.7328 | jim.kidder@kidder.com

NICK RAMIREZ
206.248.6521 | nick.ramirez@kidder.com



KIDDER.COM

This information supplied herein is from sources we deem reliable. It is provided without any representation, warranty, or guarantee, expressed or implied as to its accuracy. Prospective Buyer or Tenant should conduct an independent investigation and verification of all matters deemed to be material, including, but not limited to, statements of income and expenses. Consult your attorney, accountant, or other professional advisor.



5930 4TH AVENUE S

Available now

Design Center location

Heart of Georgetown

4th Avenue S exposure

Zoned I-G2

Two 45' recessed dock-high loading bays

30' x 60' column spacing

Warehouse 180' x 390'

Rate \$1.05/SF blended, NNN

100,000 SF subject to lease termination

100K

TOTAL SF

\$1.05

LEASE RATE/SF/
BLENDED, NNN

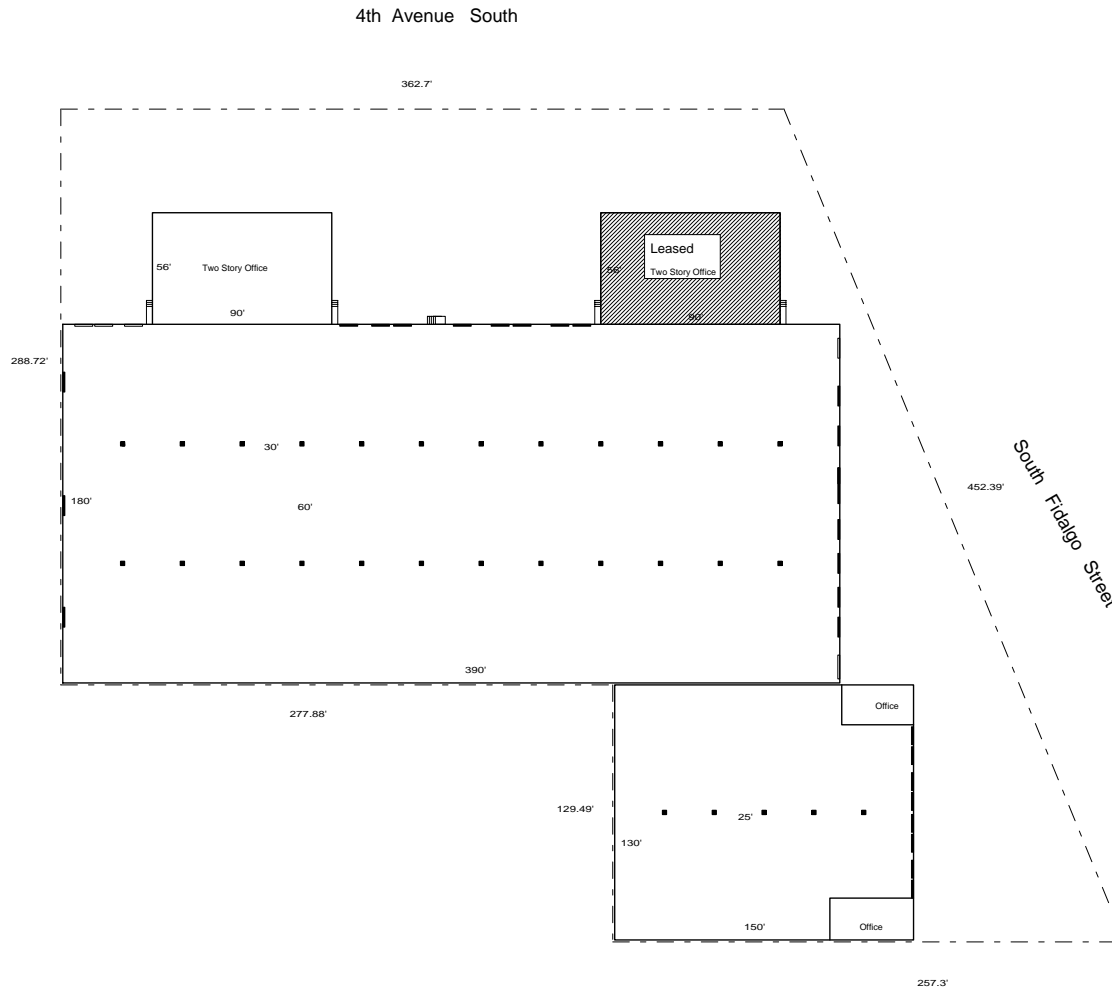


KIDDER.COM

This information supplied herein is from sources we deem reliable. It is provided without any representation, warranty, or guarantee, expressed or implied as to its accuracy. Prospective Buyer or Tenant should conduct an independent investigation and verification of all matters deemed to be material, including, but not limited to, statements of income and expenses. Consult your attorney, accountant, or other professional advisor.



FLOOR PLAN



100,000 SF

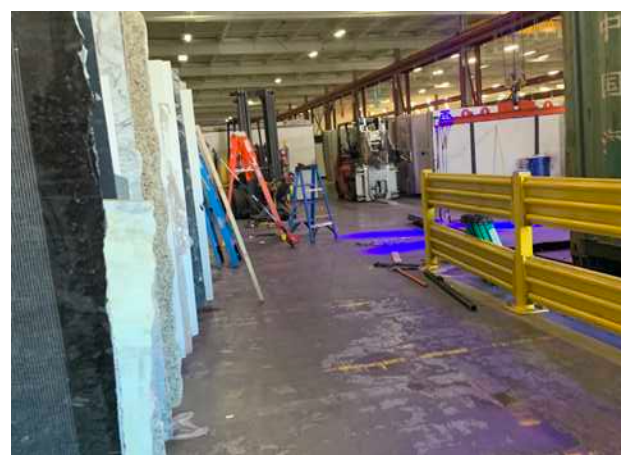
AVAILABLE

\$1.05

LEASE RATE/SF/BLENDED, NNN

NOW

AVAILABLE



KIDDER.COM

This information supplied herein is from sources we deem reliable. It is provided without any representation, warranty, or guarantee, expressed or implied as to its accuracy. Prospective Buyer or Tenant should conduct an independent investigation and verification of all matters deemed to be material, including, but not limited to, statements of income and expenses. Consult your attorney, accountant, or other professional advisor.