

For Lease

HOLMBERG BUILDING

2,406 - 6,486 SF Available with Great Amenities For Lease In Bellevue, WA

12001 SE 9TH PL, BELLEVUE, WA

 **Kidder
Mathews**

HOLMBERG BUILDING



Building has brand new pickleball court, available EV parking, & convenient Bellevue location.

ADDRESS	12001 SE 9th Pl, Bellevue, WA
LAND USE	Commercial
TOTAL BUILDING SF	27,834 SF
TOTAL RENTABLE SF	8,892 SF
SUITE 101	2,406 SF
SUITE 200	6,486 SF
LEASE TYPE	Full Service
LEASE TERM	Negotiable
PARKING	89 Stalls



8,892 SF
TOTAL SF AVAILABLE

\$39.50
LEASE RATE (SF/YR)

LOCATED IN A
BEAUTIFUL WOODED
SETTING WITH
AMPLE PARKING

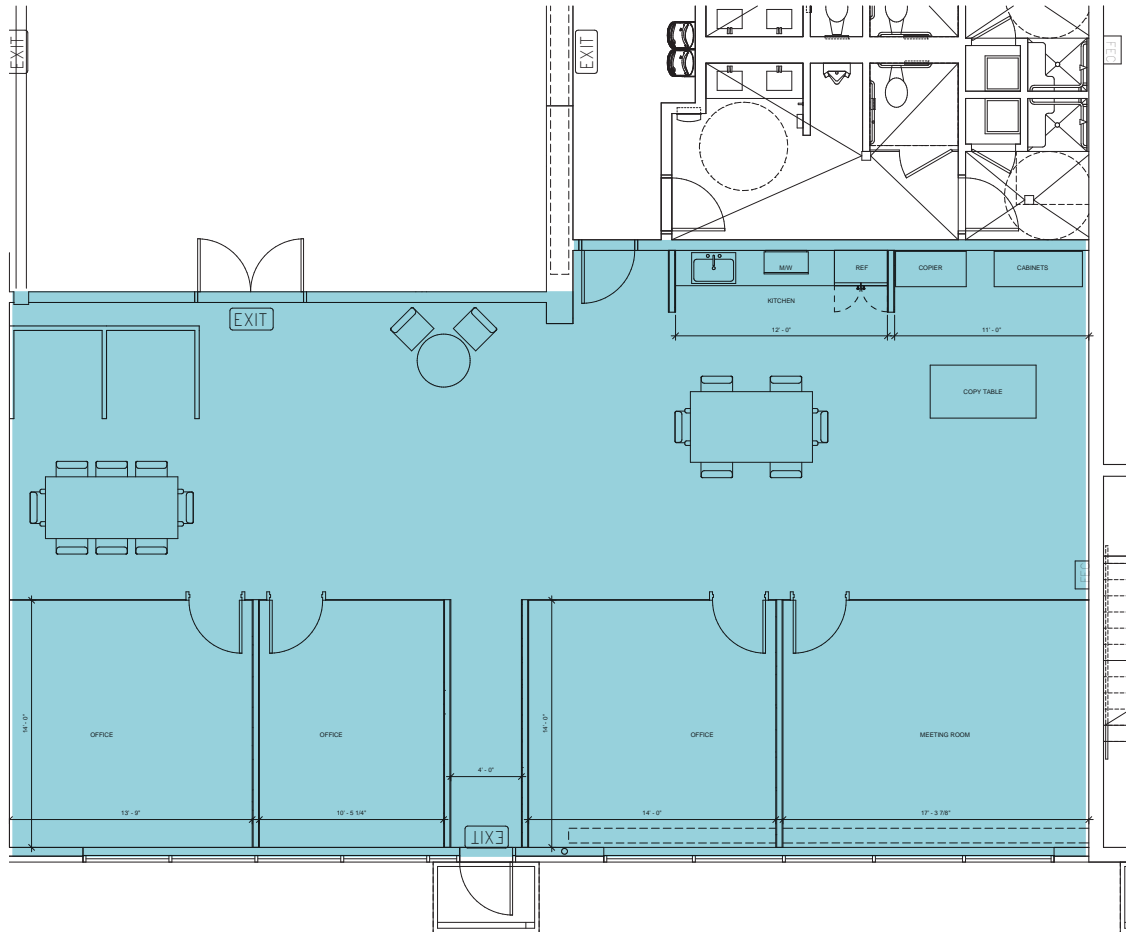
The Holmberg Building is located minutes from Downtown Bellevue, a highly walkable area with plenty of amenities. The Property is in close proximity to I-405, which provides quick access to other areas in the region. Additionally, there is ample parking available at the property.

Downtown Bellevue is known for its extensive retail and dining options, including high-end stores and upscale seafood and steak restaurants. The area is also home to several parks and green spaces, such as the Bellevue Downtown Park and Bellevue Botanical Gardens.

SUBJECT
PROPERTY

INTERSTATE
405

PROPOSED FLOOR PLAN - SUITE 101



2,406 SF

AVAILABLE

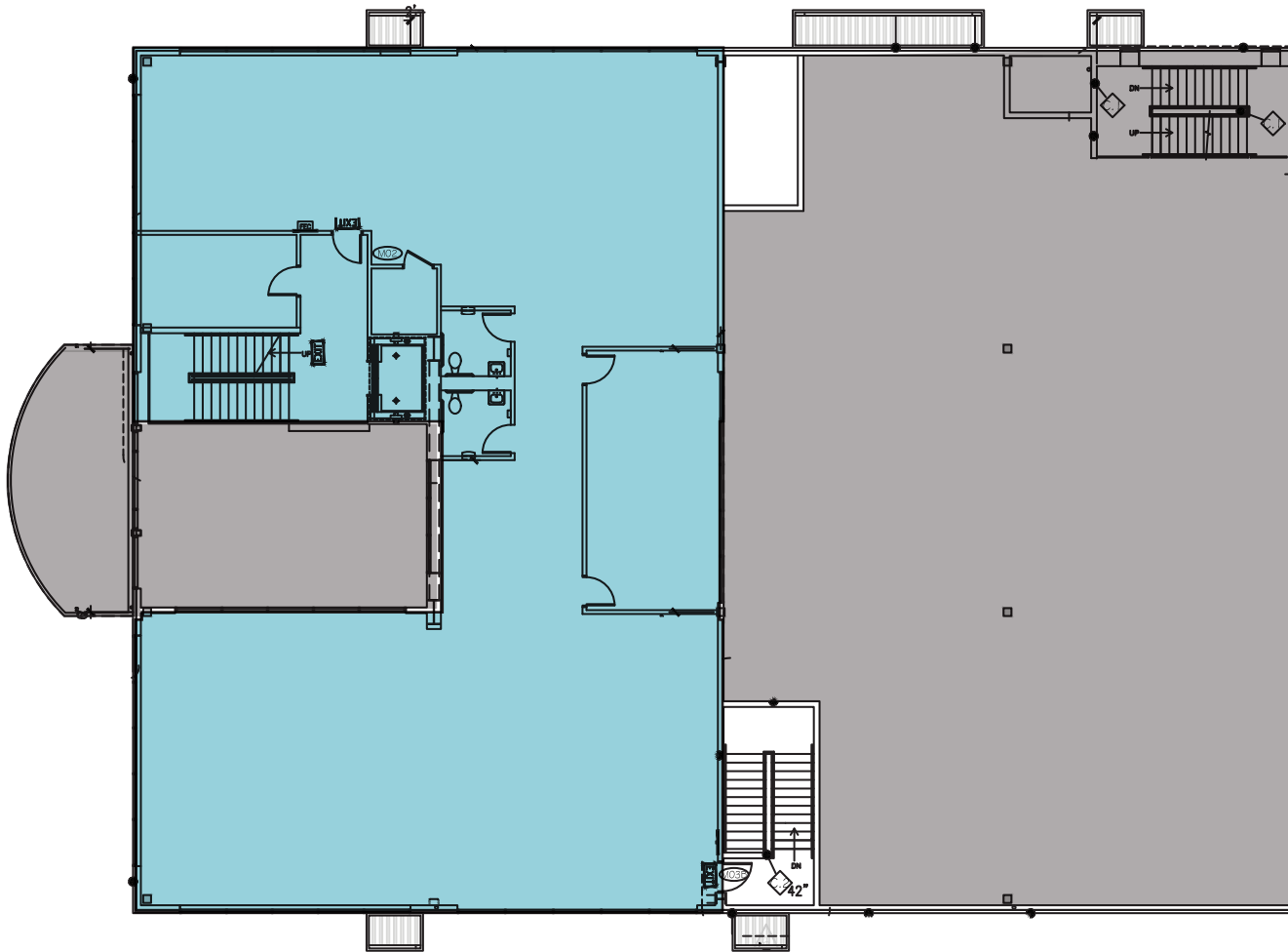
\$39.50

LEASE RATE (SF/YR), FS

NOW

AVAILABLE

PROPOSED FLOOR PLAN - SUITE 200



6,486 SF

AVAILABLE

\$39.50

LEASE RATE (SF/YR), FS

NOW

AVAILABLE

HIGHLY- ACCESSIBLE LOCATION

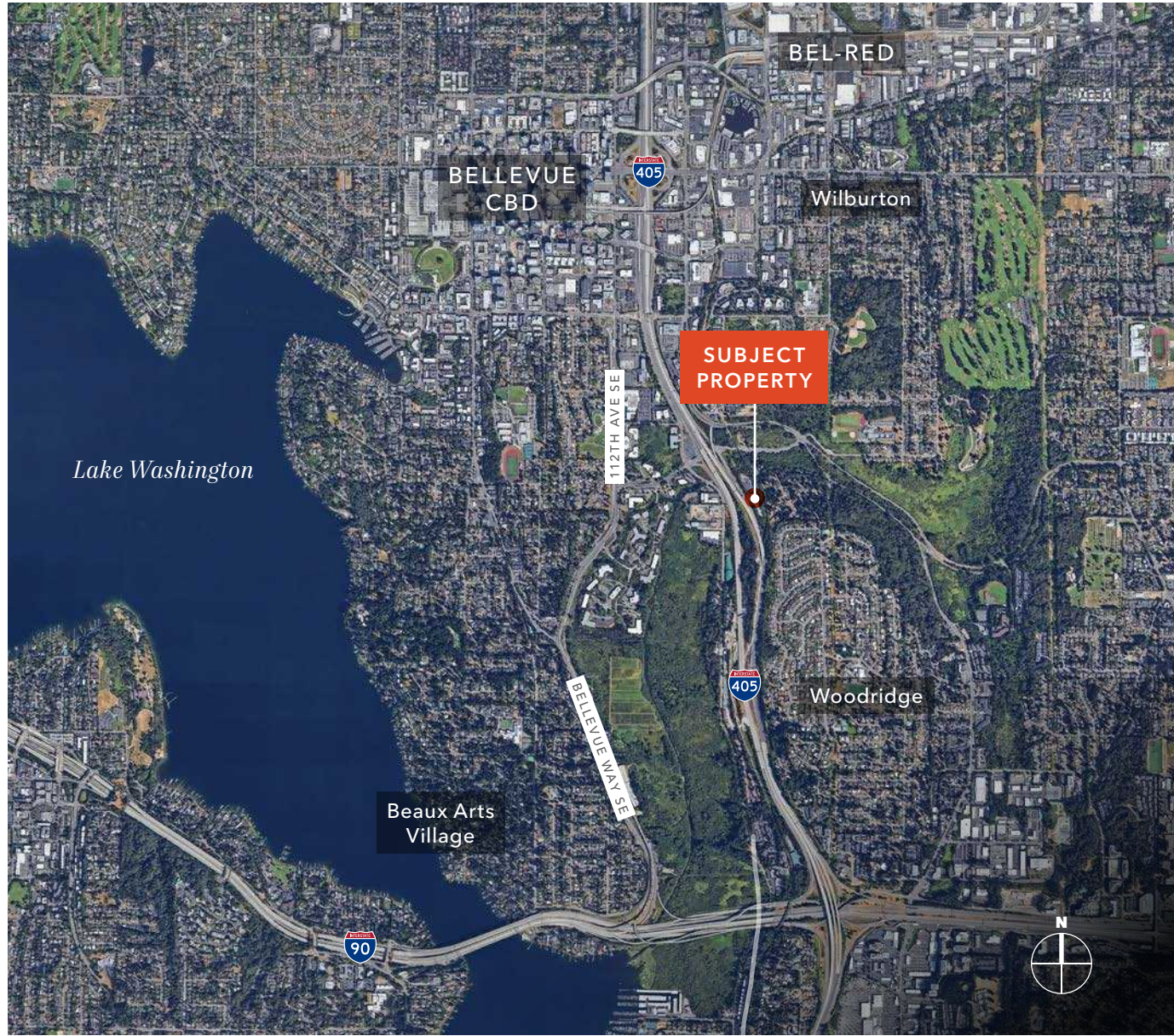
Directly off I-405 freeway with convenient access to I-90

Minutes away from Downtown Bellevue

Easy for visitors to locate

7 MIN
DOWNTOWN BELLEVUE

16 MIN
DOWNTOWN SEATTLE



HOLMBERG BUILDING

Exclusively listed by

JEFF CHANEY

Executive Vice President
425.450.1127
jeff.chaney@kidder.com

AARON KRAFT

First Vice President
425.450.1105
aaron.kraft@kidder.com

SEAUMUS OBER

Associate
425.450.1173
seamus.ober@kidder.com

KIDDER.COM

This information supplied herein is from sources we deem reliable. It is provided without any representation, warranty, or guarantee, expressed or implied as to its accuracy. Prospective Buyer or Tenant should conduct an independent investigation and verification of all matters deemed to be material, including, but not limited to, statements of income and expenses. Consult your attorney, accountant, or other professional advisor.

km Kidder
Mathews