

# OLD WENATCHEE JAIL

NWC S WENATCHEE WAY & E KITTITAS ST  
WENATCHEE, WA 98801

PACIFIC ASSET ADVISORS, INC.



# LISTING DETAILS



RENTABLE SF

1,368 -  
2,259 SF

CALL  
FOR  
RATE

**ADDRESS:** NWC S Wenatchee Way & E Kittitas St  
Wenatchee, WA 98801

**CENTER SQUARE FOOTAGE:** Upper/Lower North Building (2,979 SF)  
Upper/Lower Jailhouse (2,736 SF)  
Upper/Lower South Building (3,546 SF)

	1 MILE	3 MILES	5 MILES
<b>MEDIAN INCOME:</b>	\$65,266	\$81,906	\$85,065
<b>TOTAL POPULATION:</b>	14,319	64,573	76,954
<b>DAYTIME POPULATION:</b>	13,211	43,090	52,760

425.990.6200 | PAADVISORS.COM



# GROUND LEVEL SITE PLAN

## NORTH BUILDING

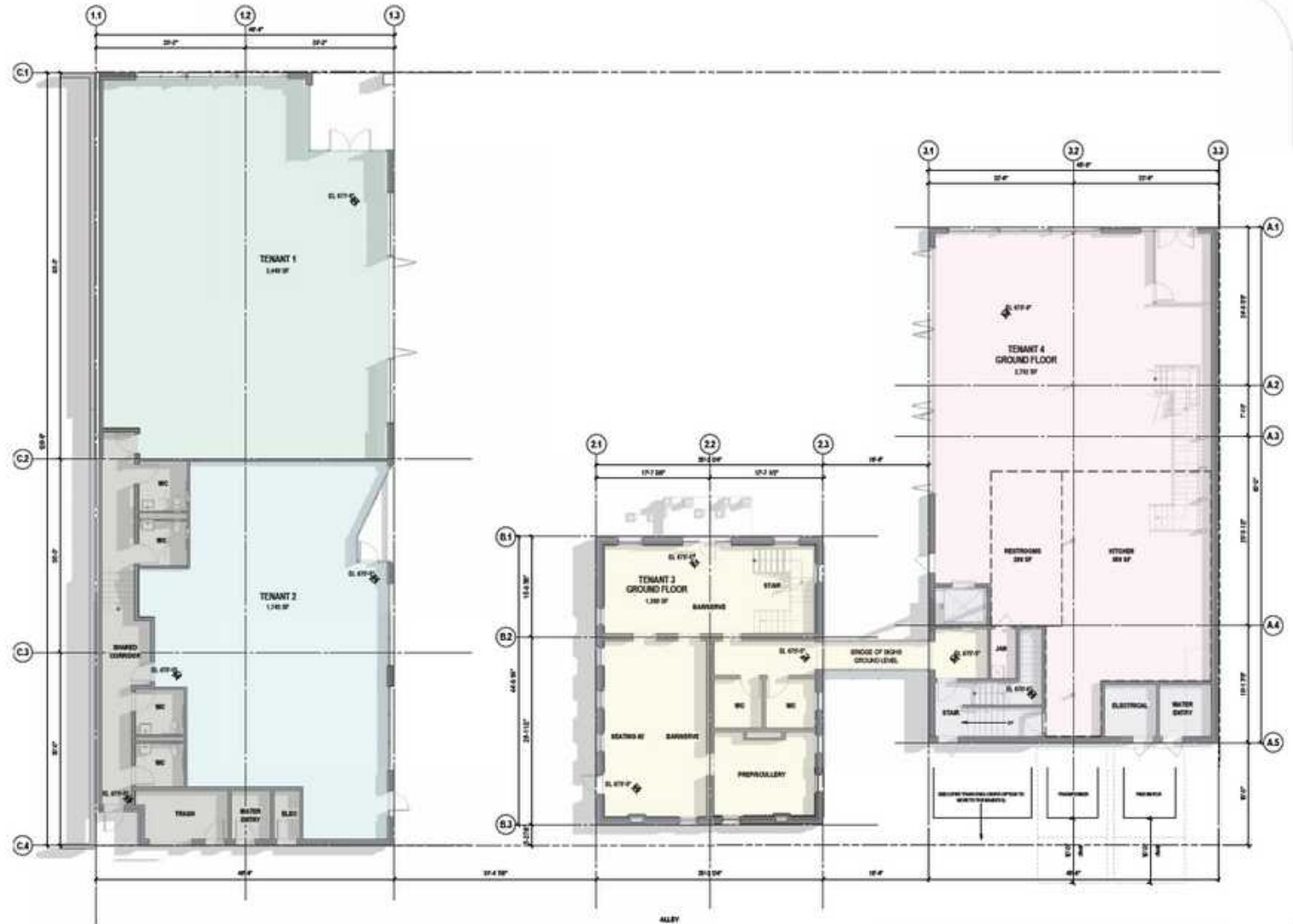
TENANT 1	2,259 SF
TENANT 2	1,809 SF
SHARED SPACE	911 SF
<b>TOTAL</b>	<b>2,979 SF</b>

## JAILHOUSE

GROUND LEVEL	1,368 SF
UPPER LEVEL	1,368 SF
<b>TOTAL</b>	<b>2,736 SF</b>

## SOUTH BUILDING

GROUND LEVEL	2,960 SF
SHARED SPACE	586 SF
<b>TOTAL</b>	<b>3,546 SF</b>



# UPPER LEVEL SITE PLAN

## NORTH BUILDING

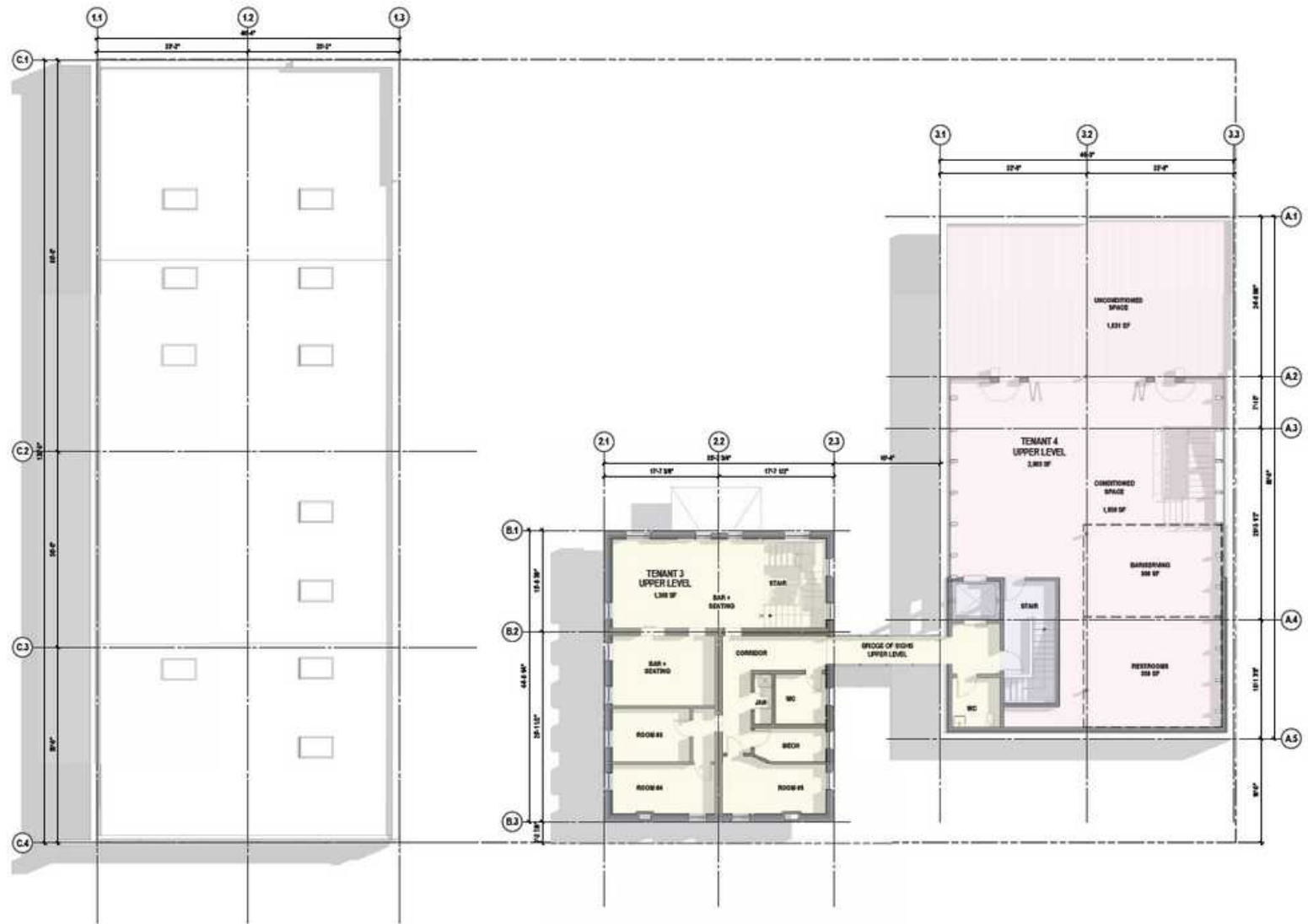
TENANT 1	2,259 SF
TENANT 2	1,809 SF
SHARED SPACE	911 SF
<b>TOTAL</b>	<b>2,979 SF</b>

## JAILHOUSE

GROUND LEVEL	1,368 SF
UPPER LEVEL	1,368 SF
<b>TOTAL</b>	<b>2,736 SF</b>

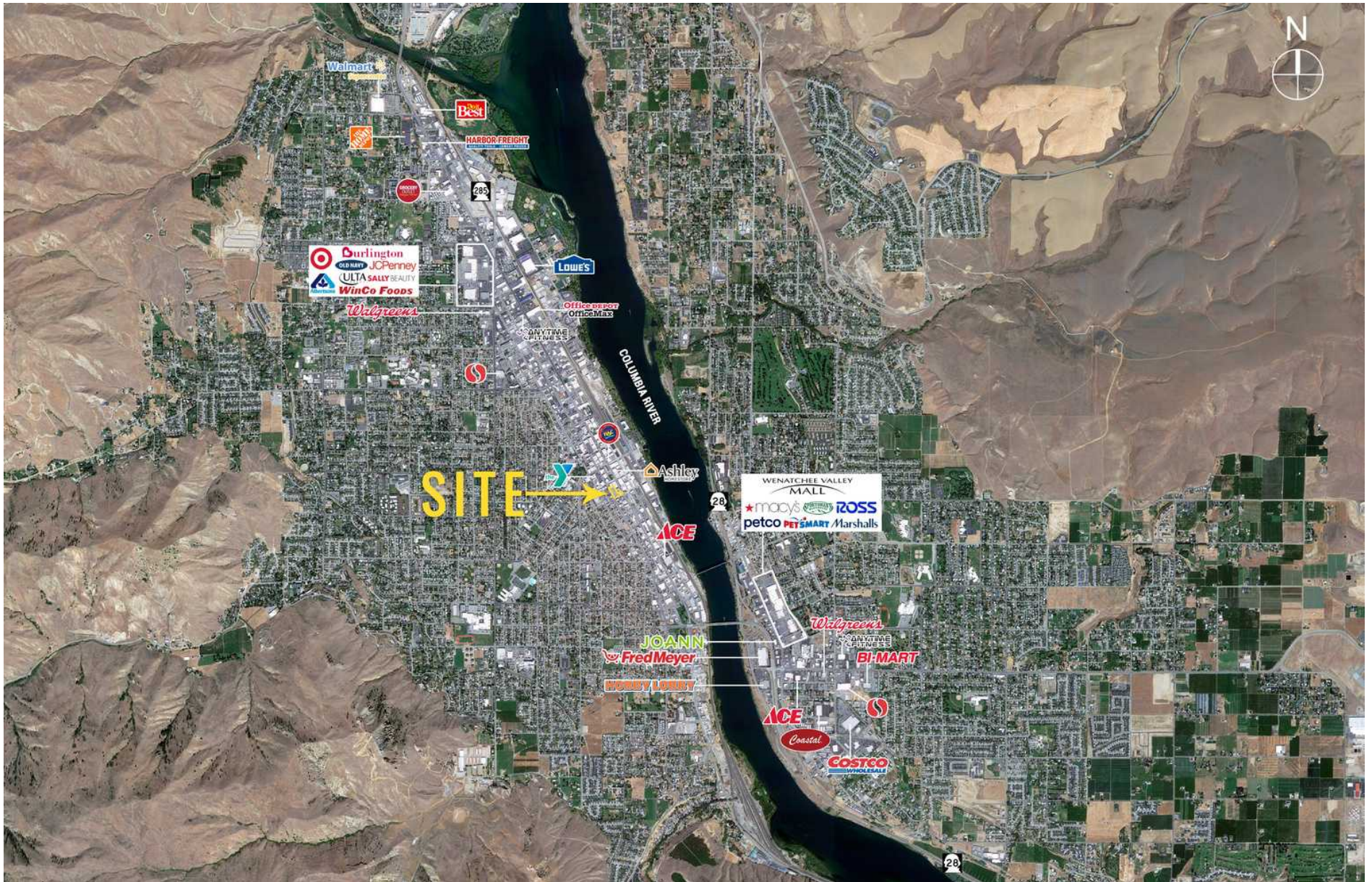
## SOUTH BUILDING

GROUND LEVEL	2,960 SF
SHARED SPACE	586 SF
<b>TOTAL</b>	<b>3,546 SF</b>





# AERIAL





# CONTACT



**RYAN CORNISH**  
SENIOR VICE PRESIDENT  
PARTNER  
206.375.6142  
RYAN@PAADVISORS.COM



**ANGELA OLIVERI**  
FIRST WESTERN PROPERTIES  
425.250.3281  
AOLIVERI@FWP-INC.COM

**PACIFIC ASSET ADVISORS, INC.**  
THE PREMIER CHOICE OF THE PACIFIC NORTHWEST

14205 SE 36TH ST, SUITE 215, BELLEVUE, WA 98006