

# 1402

## PUYALLUP STREET

SUMNER, WA 98039



AVAILABLE FOR LEASE

56,336 SF STANDALONE FACILITY WITH YARD



**CBRE**

# PROPERTY FEATURES



## BUILDING SIZE

56,336 SF BUILDING WITH  
APPROXIMATELY 8,000 SF  
FINISHED TWO-STORY OFFICE



## PARCEL SIZE

4.59 ACRE PARCEL (200,012 SF)



## YARD AREA

APPROXIMATELY 2-ACRE  
FENCED AND PAVED YARD  
SITE COVERAGE: 26%



## CLEAR HEIGHT

CLEAR HEIGHT: 24'



## DOORS

14 DOCK-HIGH DOORS  
2 GRADE-LEVEL DOORS



## PIT LEVELERS

6 PIT LEVELERS WITH  
DOCK SEALS



## ACCESSABILITY

EASY ACCESS TO HWY 167  
VIA 24TH STREET E

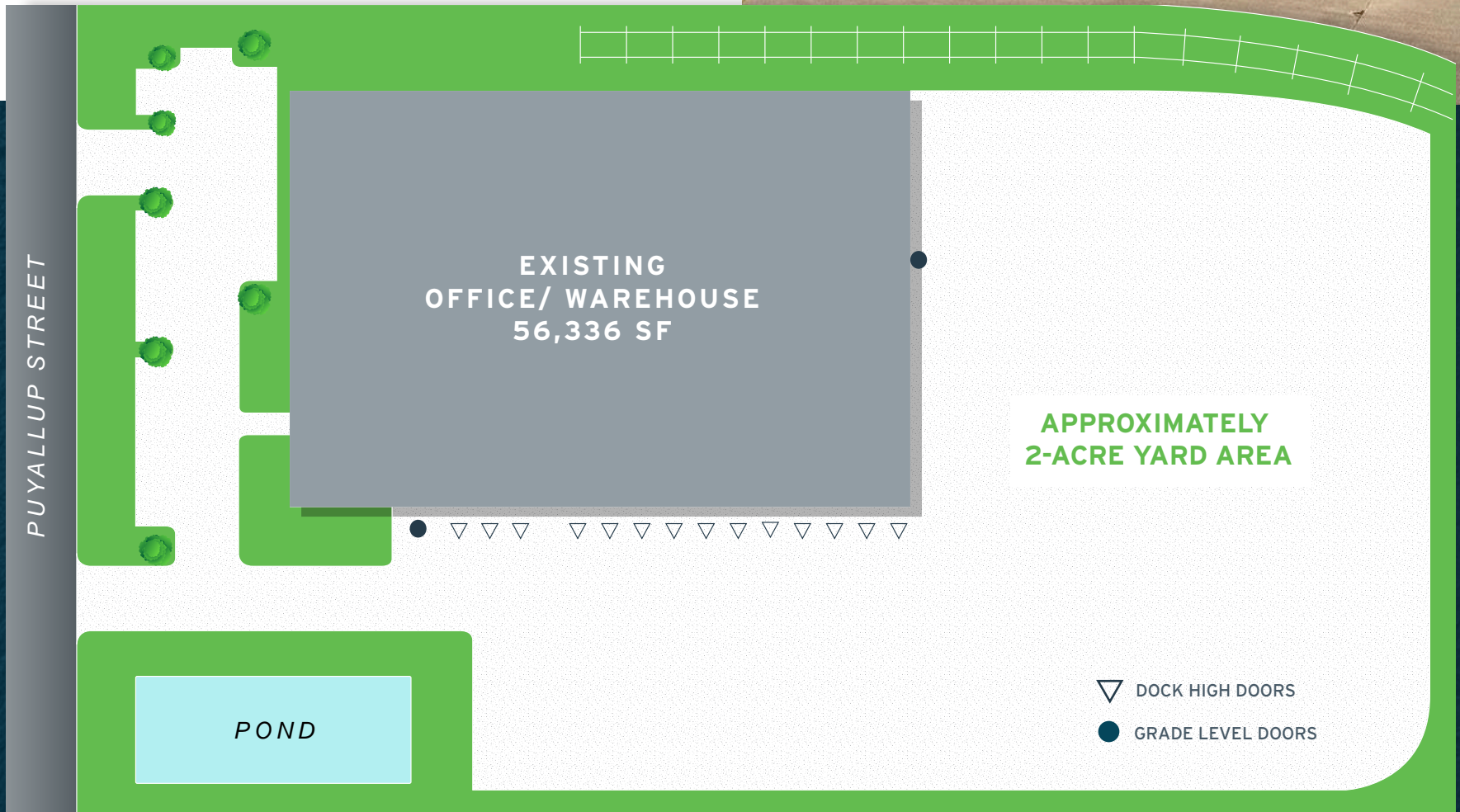


## RATES

CALL BROKER FOR  
LEASE RATES



# SITE PLAN



EXISTING  
OFFICE/ WAREHOUSE  
56,336 SF

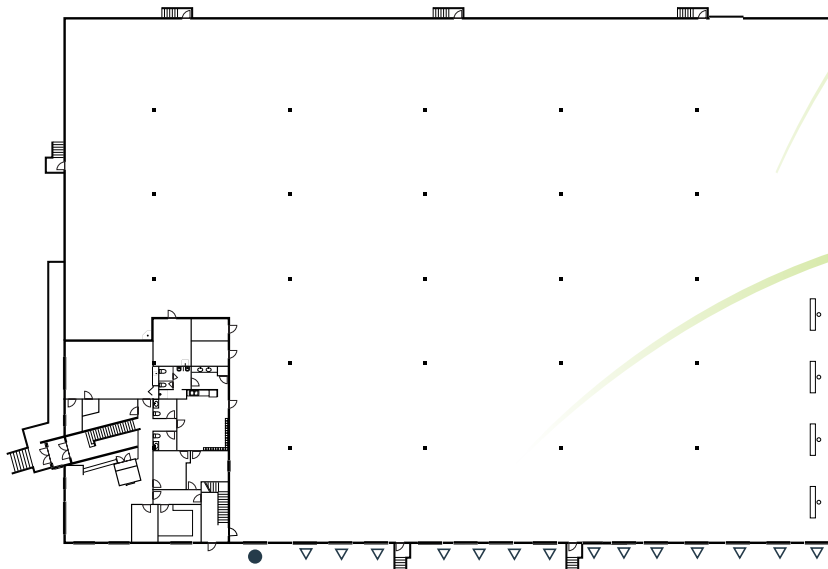
APPROXIMATELY  
2-ACRE YARD AREA

- ▽ DOCK HIGH DOORS
- GRADE LEVEL DOORS

# PROPERTY FLOORPLANS

56,336 SF STANDALONE FACILITY WITH YARD

1ST FLOOR



1ST FLOOR  
DETAIL

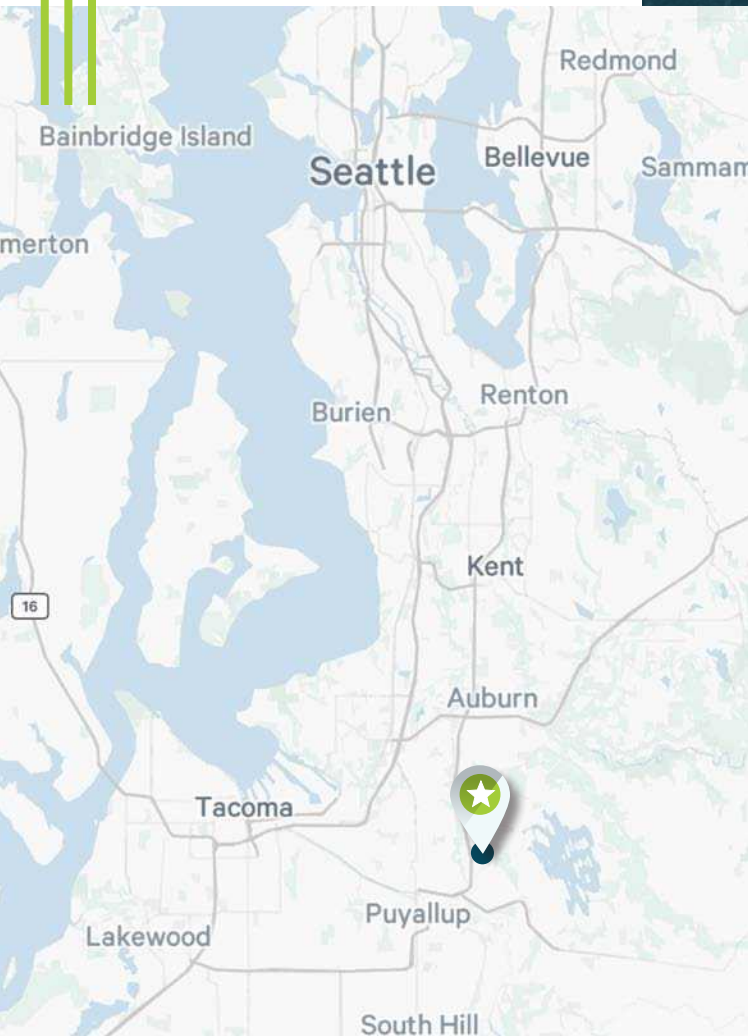


2ND FLOOR DETAIL



- ▽ DOCK HIGH DOORS
- GRADE LEVEL DOORS

# LOCATION MAP



## MILES TO/FROM PROPERTY

  
**12 MILES**  
 TO TACOMA

  
**19 MILES**  
 TO SEATAC AIRPORT

  
**20 MILES**  
 TO SOUTHCENTER

  
**35 MILES**  
 TO SEATTLE

  
**30 MILES**  
 TO BELLEVUE

# 1402

## PUYALLUP STREET

SUMNER, WA 98039

**BROKER CONTACT:**

**ANDREW HITCHCOCK**

Executive Vice President

+1 206 442 2719

andrew.hitchcock@cbre.com

**OWNER CONTACT:**

**JOHN QUINN**

Senior Regional Director

+1 805 906 4091

jquinn@firstindustrial.com



# CBRE

© 2024 CBRE, Inc. All rights reserved. This information has been obtained from sources believed reliable but has not been verified for accuracy or completeness. CBRE, Inc. makes no guarantee, representation or warranty and accepts no responsibility or liability as to the accuracy, completeness, or reliability of the information contained herein. You should conduct a careful, independent investigation of the property and verify all information. Any reliance on this information is solely at your own risk. CBRE and the CBRE logo are service marks of CBRE, Inc. All other marks displayed on this document are the property of their respective owners, and the use of such marks does not imply any affiliation with or endorsement of CBRE. Photos herein are the property of their respective owners. Use of these images without the express written consent of the owner is prohibited. PM\_April2024