



# TALL FIRS II

20609 SR-410 EAST  
BONNEY LAKE, WA 98391

PACIFIC ASSET ADVISORS, INC.

## LISTING DETAILS



RENTABLE SF  
**1,680 SF**

**CALL  
FOR  
RATE**

ADDRESS: 20609 SR-410 East  
Bonney Lake, WA 98391

CENTER SQUARE  
FOOTAGE: 17,334 SF

SPACE AVAILABLE: 20621

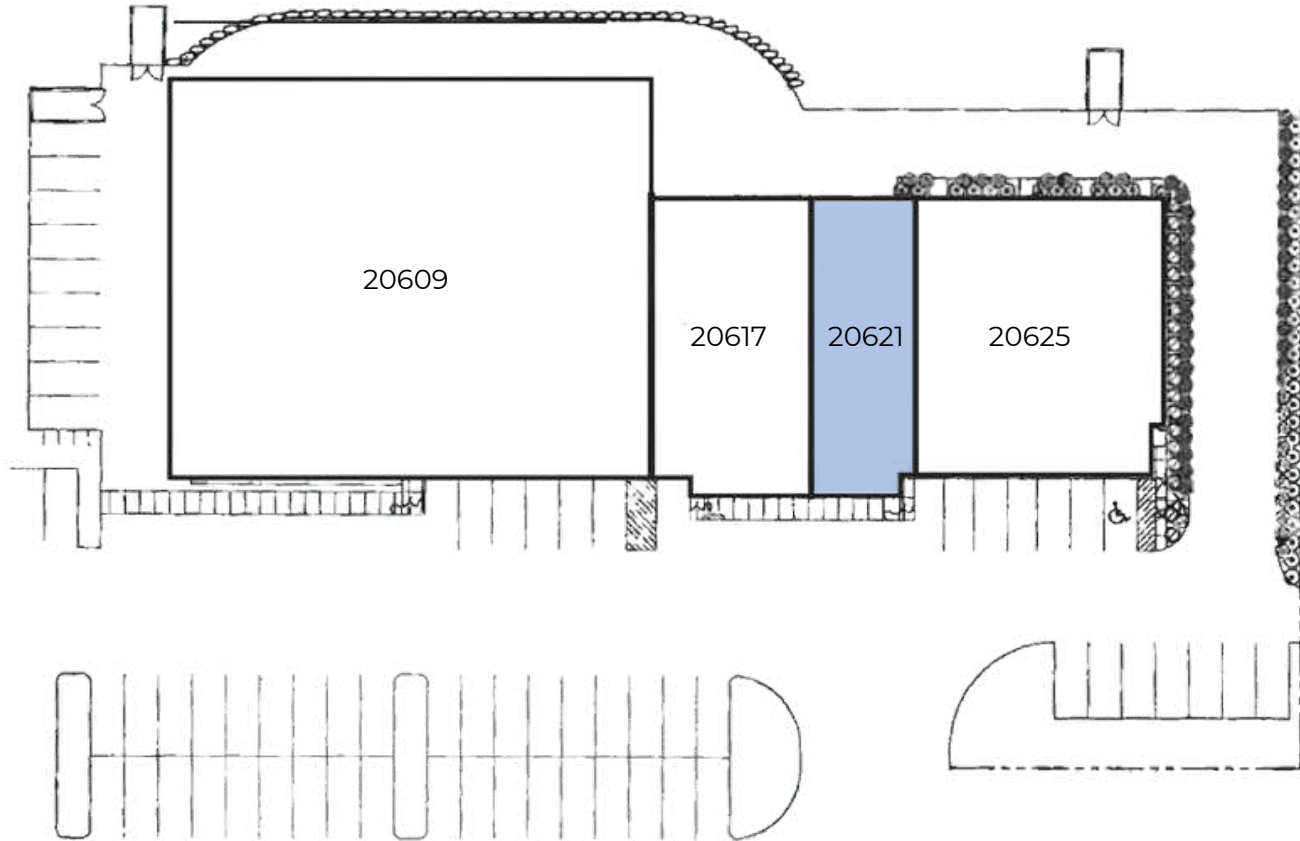
MAJOR TENANTS: Dollar Tree, Vie Athletics,  
Trappers Sushi...

	1 MILE	3 MILES	5 MILES
MEDIAN INCOME:	\$113,888	\$118,037	\$119,525
TOTAL POPULATION:	6,899	50,747	91,036
DAYTIME POPULATION:	3,560	18,810	39,019

425.990.6200 | PAADVISORS.COM



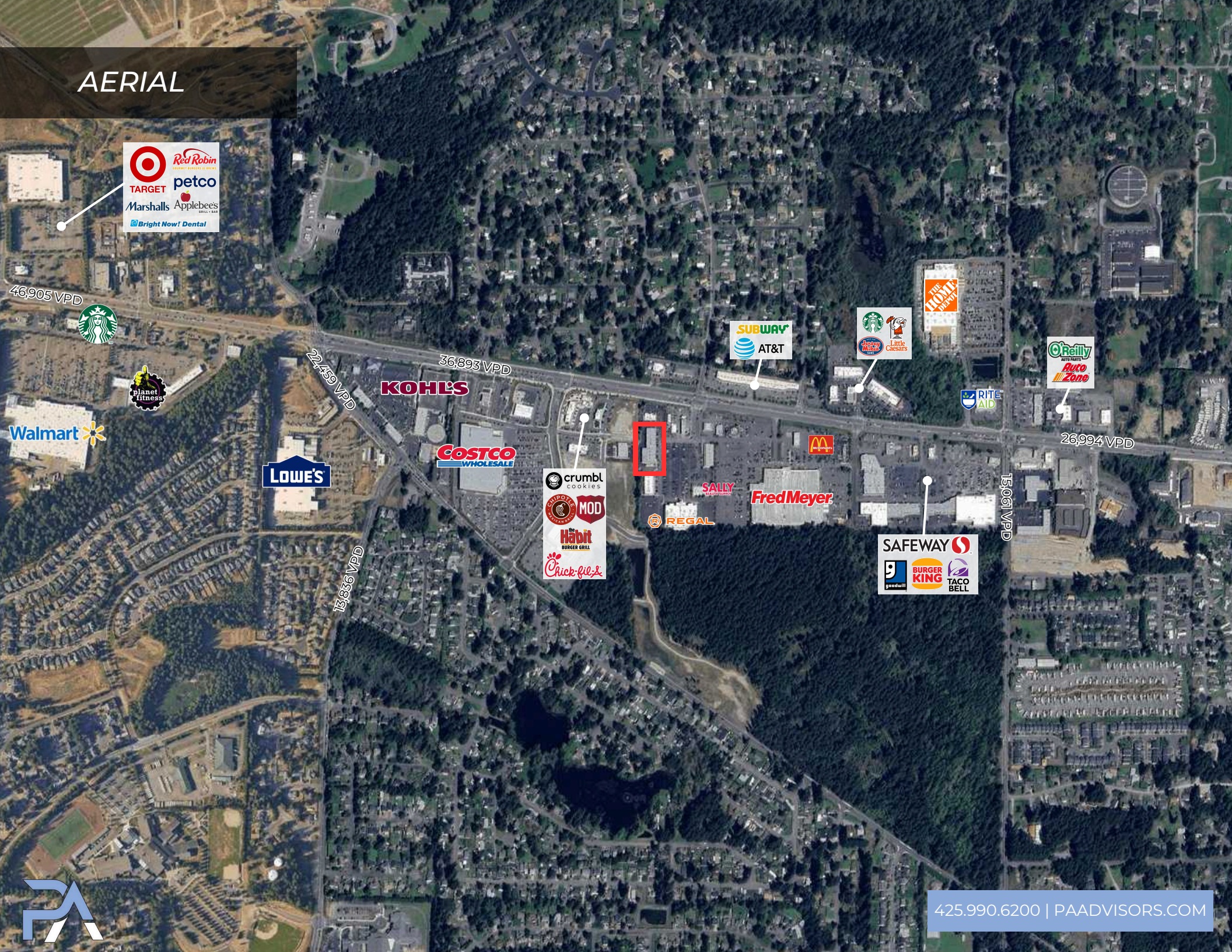
# SITE PLAN



SUITE	TENANT	SQ FT
20609	Dollar Tree	9,006
20617	Vie Athletics	2,452
20621	AVAILABLE	1,680
20625	Trappers Sushi	4,196



# AERIAL



# CONTACT



**SYDNEY GASPARICH**

ASSOCIATE BROKER  
425.326.3742  
SYDNEY@PAADVISORS.COM



**GREG CLOSE**

PRESIDENT  
425.765.4435  
GREG@PAADVISORS.COM

**PACIFIC ASSET ADVISORS, INC.**

THE PREMIER CHOICE OF THE PACIFIC NORTHWEST

14205 SE 36TH ST, SUITE 215, BELLEVUE, WA 98006