

Fife Portal Industrial Park

Unit 104

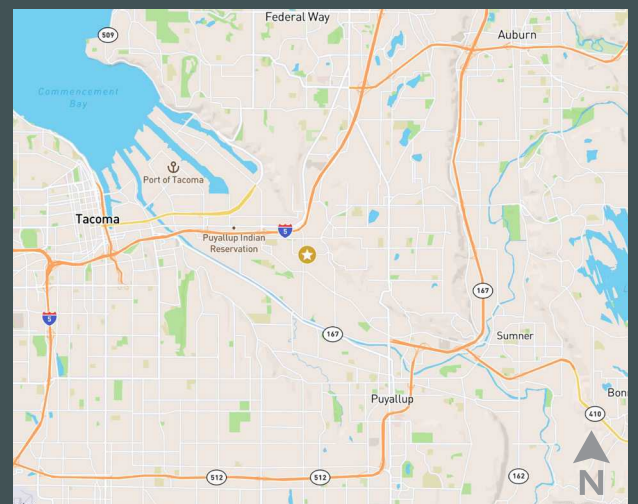
7124 26th St E
Unit 104
Fife, WA 98424
www.cbre.com/tacoma

Available May 1, 2024

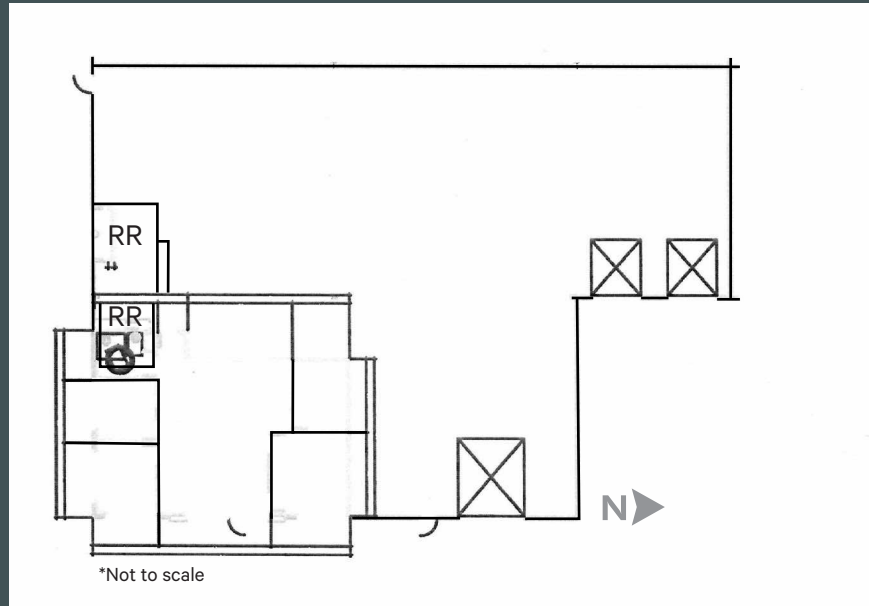


Property Information

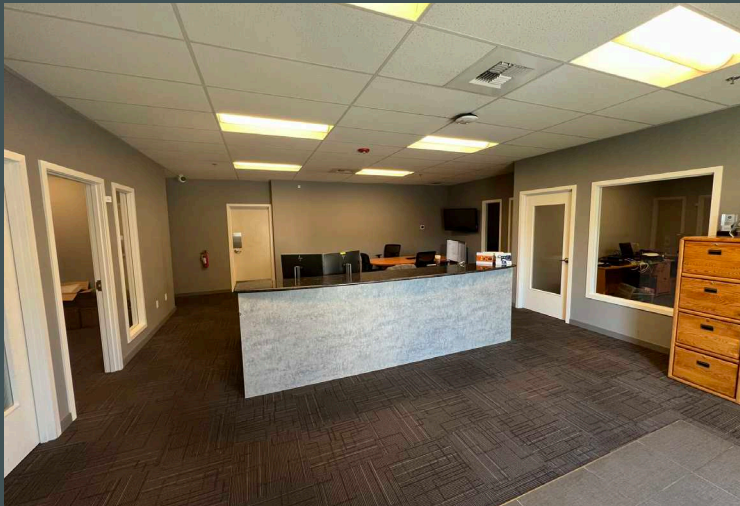
- + 8,453 SF shell
- + ±1,200 SF office
- + 2 dock-high doors
- + 1 grade-level door (12' x 14')
- + ±20' clear height
- + 480V, 3-phase power
- + Rare small dock-loaded space that can receive 53' trailers
- + Endcap space with abundant parking
- + Sublease through 12/31/2025
- + Below market rates: \$0.95 blended + NNN



Floor Plan



Photos



Contact Us

Chris Cowles
First Vice President
+1 253 596 0048
chris.cowles@cbre.com

Monte Decker
Senior Vice President
+1 253 596 0041
monte.decker@cbre.com

CBRE, Inc.
1201 Pacific Avenue
Suite 1502
Tacoma, WA 98402

© 2024 CBRE, Inc. All rights reserved. This information has been obtained from sources believed reliable, but has not been verified for accuracy or completeness. You should conduct a careful, independent investigation of the property and verify all information. Any reliance on this information is solely at your own risk. CBRE and the CBRE logo are service marks of CBRE, Inc. All other marks displayed on this document are the property of their respective owners, and the use of such logos does not imply any affiliation with or endorsement of CBRE. Photos herein are the property of their respective owners. Use of these images without the express written consent of the owner is prohibited. SD 4.30.24