

HILLTOP OFFICE PARK BUILDING 1

FOR LEASE

Prime office space near
downtown Bellevue



12310 NE 8TH ST | BELLEVUE, WA

km Kidder
Mathews

LEASE AVAILABILITY

Suite 202 - 1,785 SF

Desirable location, near numerous amenities and Bellevue CBD

Close proximity to East Link Light Rail extension, opening in 2024

HVAC units installed in 2016

Abundant parking available (36 stalls), Ratio 4.7/1,000 SF

Easy access to I-405 and SR-520

\$32/SF
Full Service

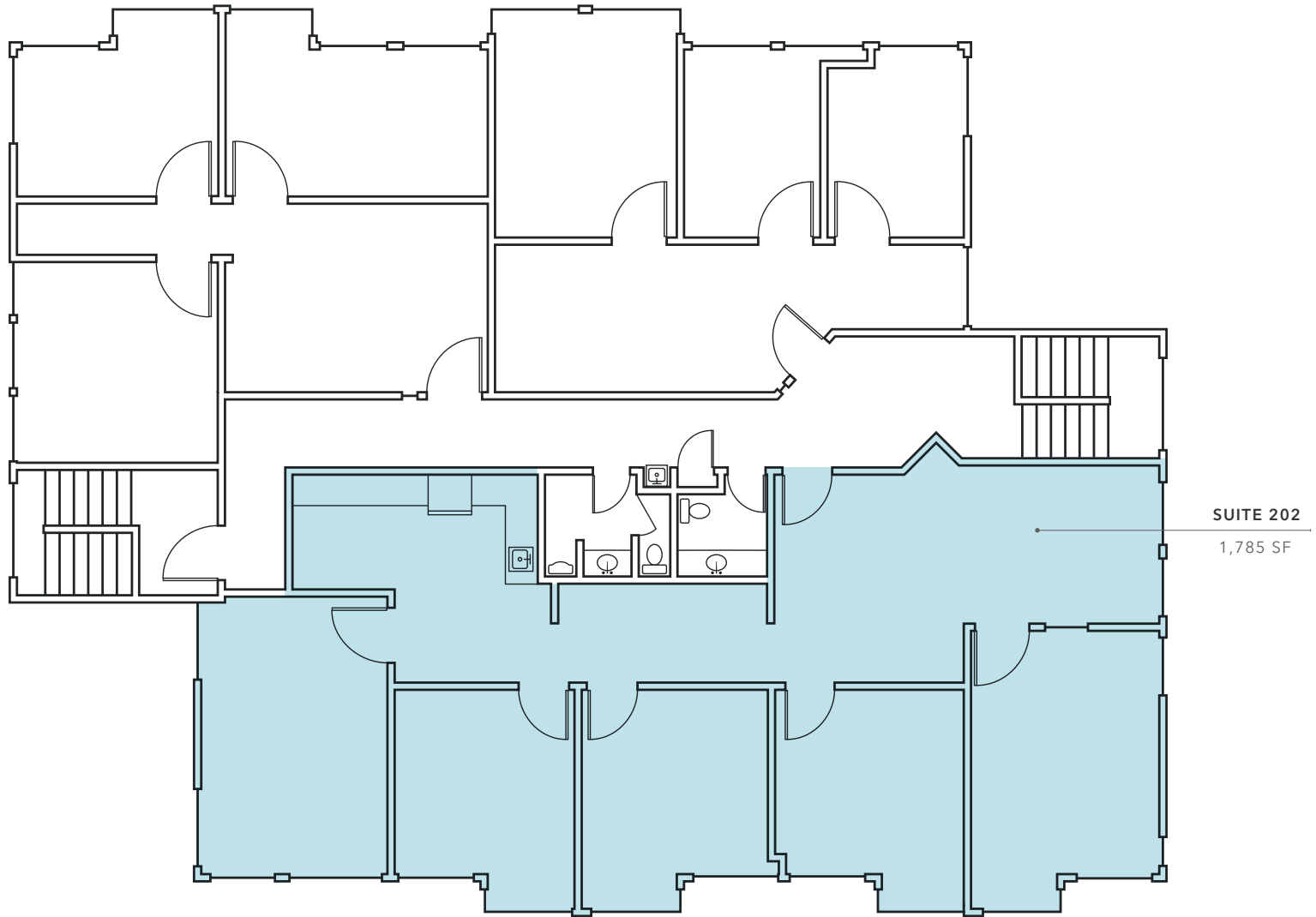
AARON KRAFT

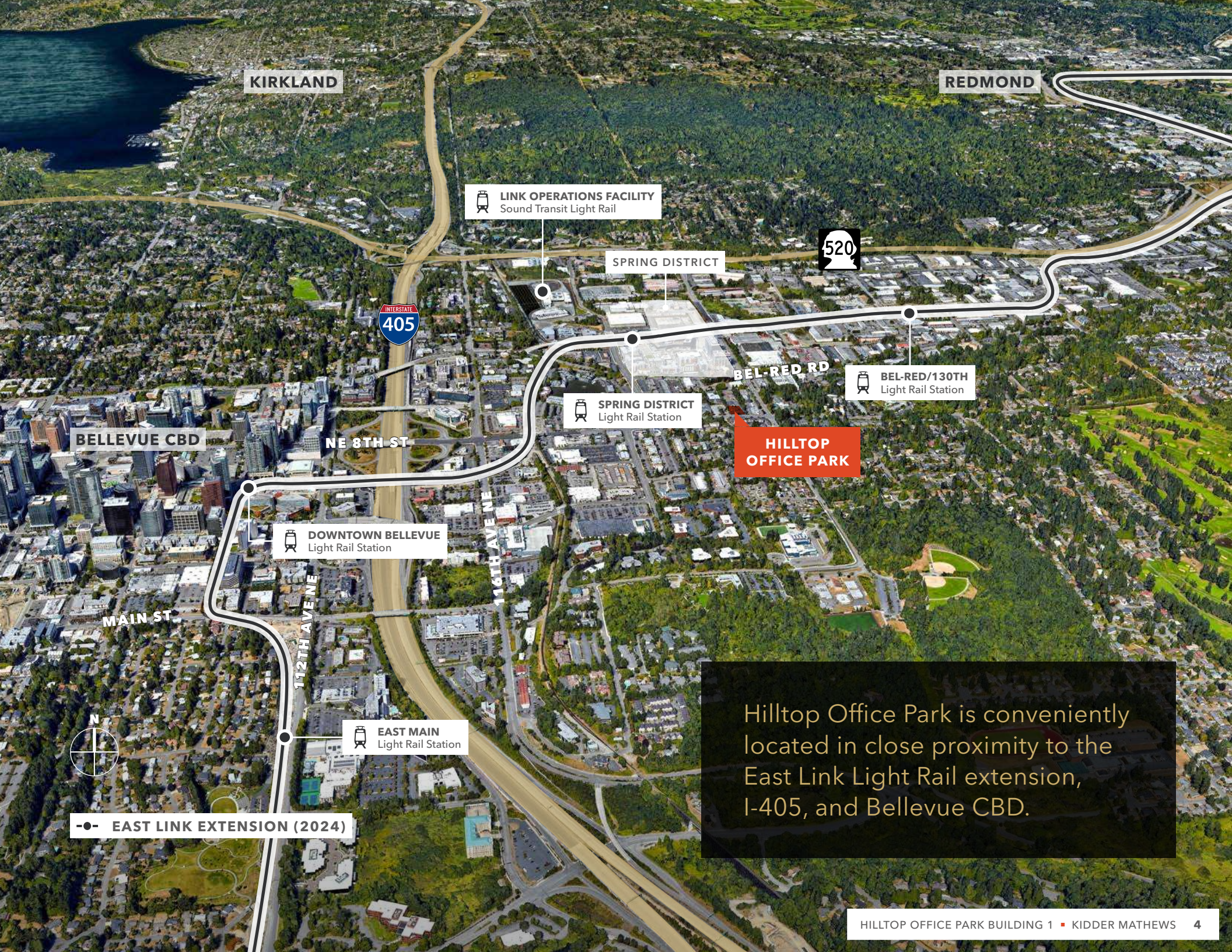
425.450.1105

aaron.kraft@kidder.com



SECOND FLOOR PLAN





KIRKLAND

REDMOND

LINK OPERATIONS FACILITY
Sound Transit Light Rail

SPRING DISTRICT



BEL-RED/130TH
Light Rail Station

BEL-RED RD

SPRING DISTRICT
Light Rail Station

HILLTOP
OFFICE PARK

BELLEVUE CBD

NE 8TH ST

DOWNTOWN BELLEVUE
Light Rail Station

MAIN ST

112TH AVE NE

116TH AVE NE

EAST MAIN
Light Rail Station


--- EAST LINK EXTENSION (2024)

Hilltop Office Park is conveniently located in close proximity to the East Link Light Rail extension, I-405, and Bellevue CBD.

An aerial photograph of a suburban neighborhood. In the foreground, there are several houses, including a prominent one with solar panels on its roof. A parking lot with several cars is visible. In the background, a dense city skyline with various high-rise buildings is visible under a clear blue sky.

EXCLUSIVELY
REPRESENTED BY

AARON KRAFT
425.450.1105
aaron.kraft@kidder.com

 **Kidder
Mathews**