

13228 4TH AVE W

*Warehouse with office
for lease in Everett
adjacent to I-5*

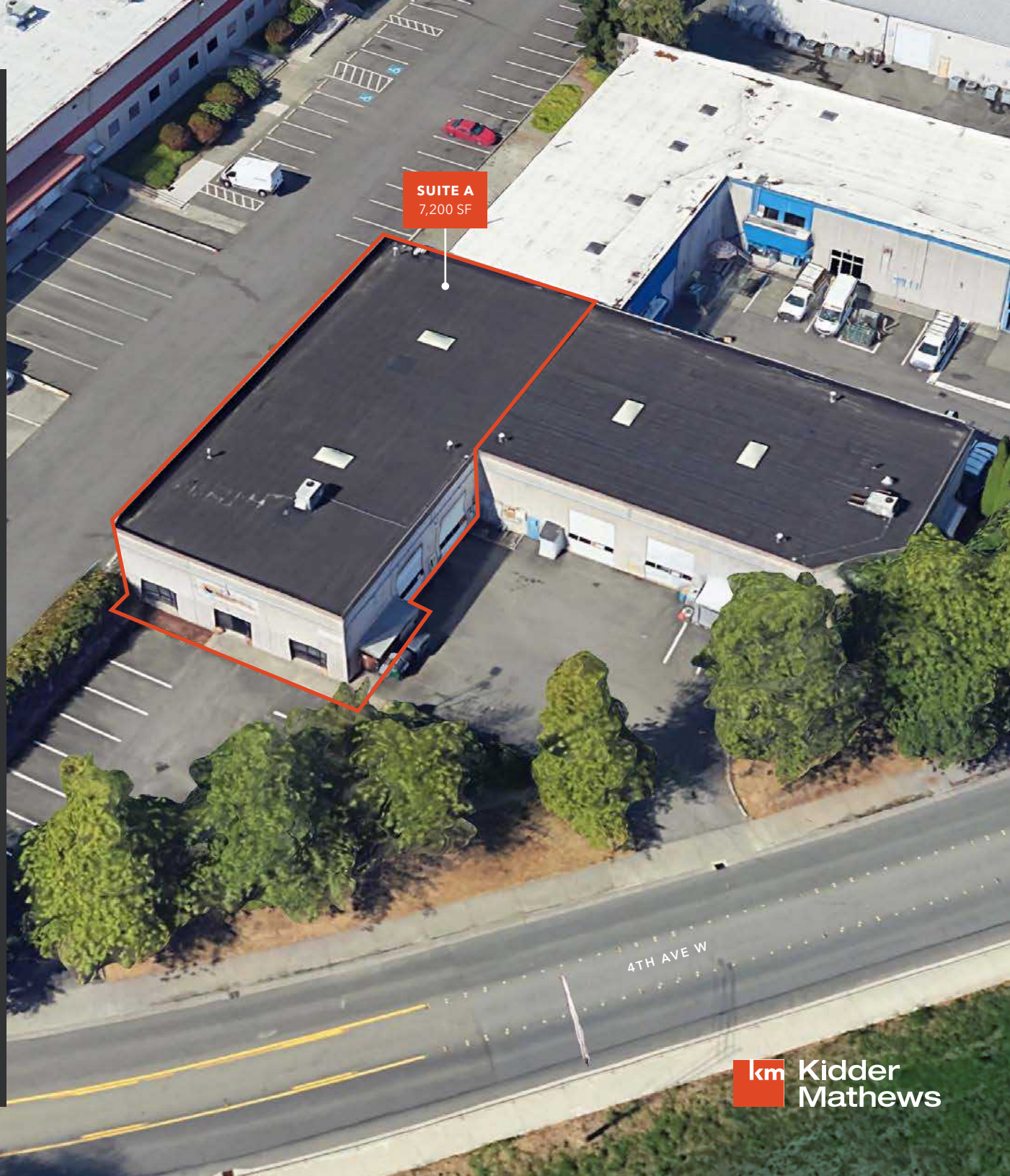
13228 4TH AVE W
EVERETT, WA

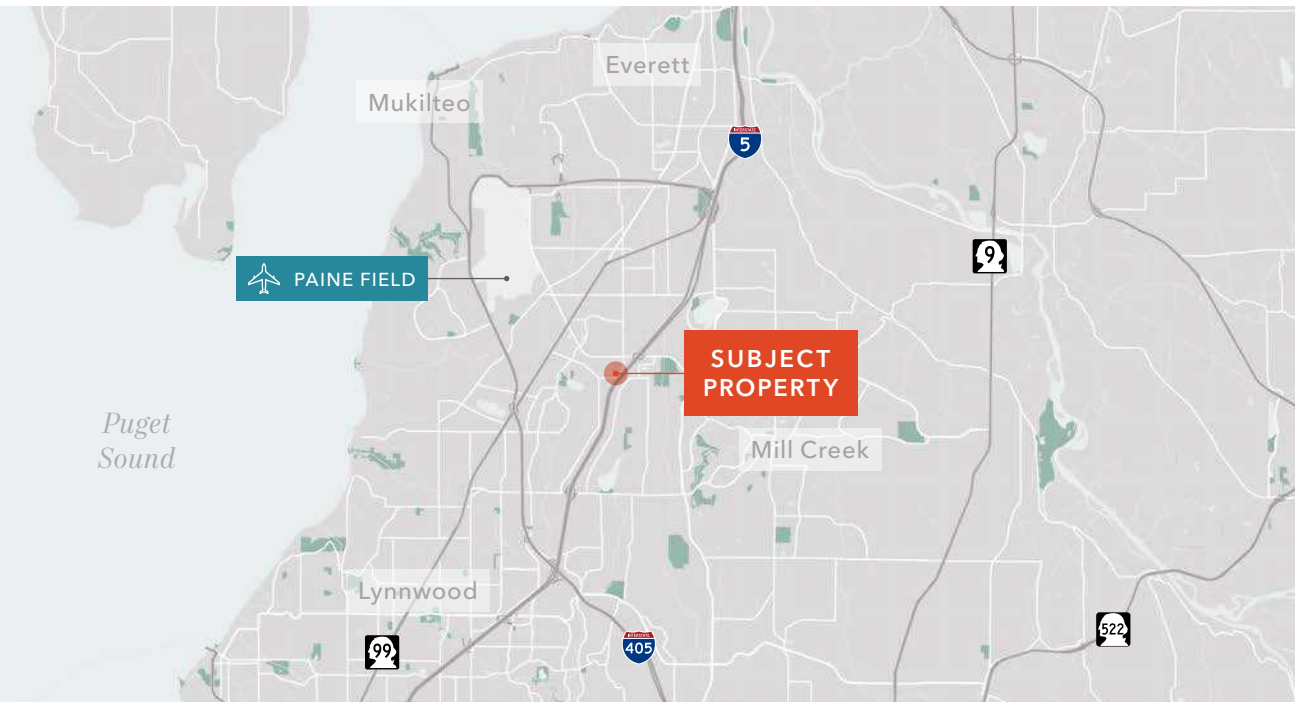
→ VIRTUAL TOUR AVAILABLE

MATTHEW HAGEN, SIOR
Executive Vice President
425.283.5782
matt.hagen@kidder.com

COLTON TEGLOVIC
Vice President
425.281.5261
colton.teglovic@kidder.com

KIDDER.COM





PROPERTY OVERVIEW

ADDRESS	13228 4th Ave W Everett WA 98204
SUITE A AVAILABLE	<ul style="list-style-type: none"> • Office: 1,268 SF • Warehouse: 5,933 SF • Total: 7,200 SF
WAREHOUSE CEILING HEIGHT	±20'
HEATING	Gas in warehouse/electric in office
POWER	400 amp / 480 volt / 3 phase
FIRE SPRINKLERS	Yes
LOADING	2 grade-level at 12' w x 14' h
ZONING	UC - Urban Center. Current occupancy grandfathered as LI - Light Industrial
CONSTRUCTION	Concrete tilt-up
AVAILABLE	Now

\$1.35/SF
PLUS NNN

\$0.31/SF
NNN

SUITE A FLOOR PLAN



7,200 SF

TOTAL AREA

5,933 SF

WAREHOUSE

1,268 SF

OFFICE

\$1.35/SF

PLUS NNN

\$0.31/SF

NNN

LEGEND

Office

Warehouse

Grade-Level Loading

KIDDER.COM

This information supplied herein is from sources we deem reliable. It is provided without any representation, warranty, or guarantee, expressed or implied as to its accuracy. Prospective Buyer or Tenant should conduct an independent investigation and verification of all matters deemed to be material, including, but not limited to, statements of income and expenses. Consult your attorney, accountant, or other professional advisor.



[KIDDER.COM](https://www.kidder.com)

This information supplied herein is from sources we deem reliable. It is provided without any representation, warranty, or guarantee, expressed or implied as to its accuracy. Prospective Buyer or Tenant should conduct an independent investigation and verification of all matters deemed to be material, including, but not limited to, statements of income and expenses. Consult your attorney, accountant, or other professional advisor.