

HILLTOP OFFICE PARK

Office Space Available in
Highly Desirable Bellevue Location



12320 NE 8TH ST | BLDG TWO | BELLEVUE, WA

km Kidder
Mathews

FOR LEASE

Hilltop Office Park

12320 NE 8TH ST | BLDG TWO | BELLEVUE, WA



Features

2,538 SF available

RATE \$22.00, NNN

FREE PARKING 3.5 / 1,000 SF

LOCATED just east of Downtown Bellevue along NE 8th St.

EASY ACCESS to I-405 & 520 and East Link light rail line.

ALEX ANDREA
425.450.1163

alex.andrea@kidder.com

KIDDER.COM

This information supplied herein is from sources we deem reliable. It is provided without any representation, warranty, or guarantee, expressed or implied as to its accuracy. Prospective Buyer or Tenant should conduct an independent investigation and verification of all matters deemed to be material, including, but not limited to, statements of income and expenses. Consult your attorney, accountant, or other professional advisor.



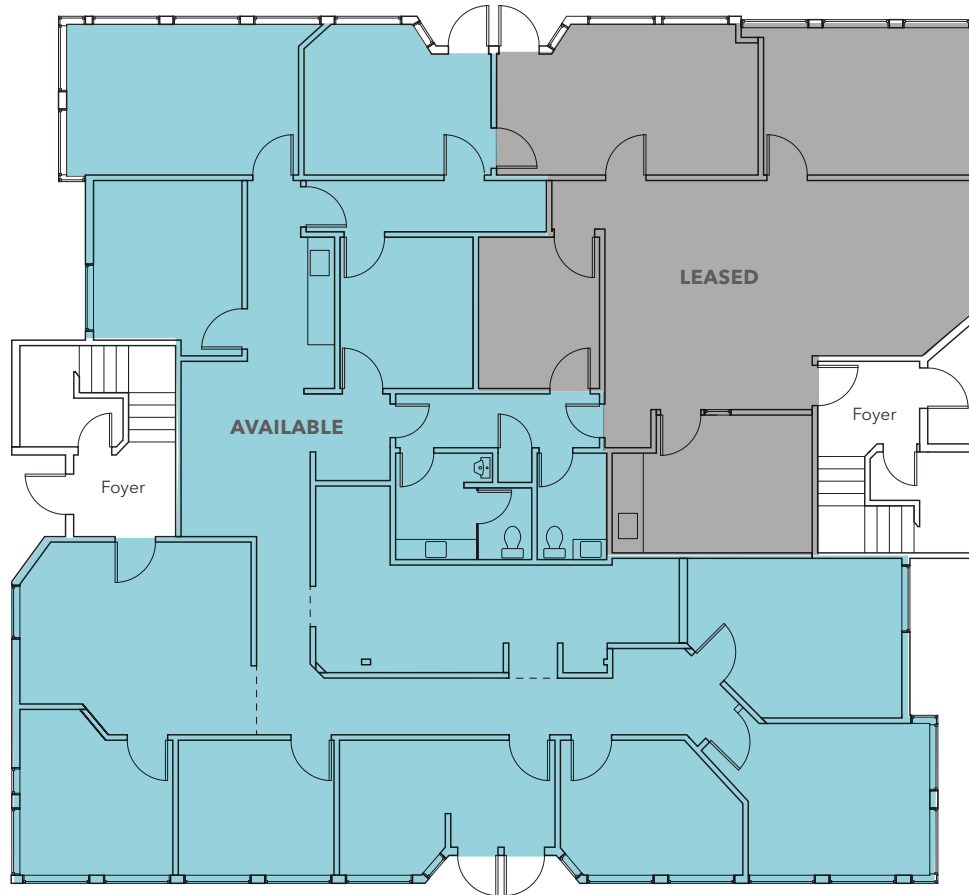
FOR LEASE

Hilltop Office Park

12320 NE 8TH ST | BLDG TWO | BELLEVUE, WA

Floor Plan

2,538 SF AVAILABLE



ALEX ANDREA

425.450.1163

alex.andrea@kidder.com

KIDDER.COM

This information supplied herein is from sources we deem reliable. It is provided without any representation, warranty, or guarantee, expressed or implied as to its accuracy. Prospective Buyer or Tenant should conduct an independent investigation and verification of all matters deemed to be material, including, but not limited to, statements of income and expenses. Consult your attorney, accountant, or other professional advisor.

