

FOR LEASE

19803 1st Avenue S.
Normandy Park, WA 98148



11621 97th Lane NE, Kirkland, WA 98034
425.822.5522 | fwp-inc.com

NORMANDY PARK TOWNE CENTER

Jake Thurber

© First Western Properties, Inc. DISCLAIMER:
The above information has been secured
from sources believed to be reliable, however,
no representations are made to its accuracy.
Prospective tenants or buyers should consult
their professional advisors and conduct their
own independent investigation. Properties
are subject to change in price and/or
availability without notice.

AVAILABLE

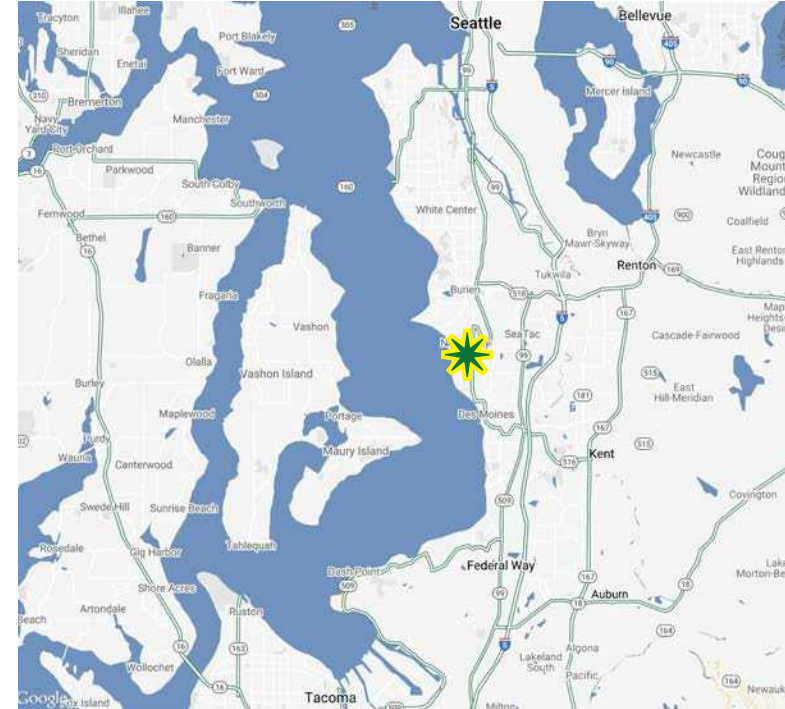
BUILDING 3: 1,295 SF, End cap space

BUILDING 5: 16,500 SF, End cap space

CONTACT



Jake Thurber
425-250-3277
jthurber@fwp-inc.com



FEATURES

- Call for rates
- Building 1 spaces can be combined
- New gas station and convenience store now open!
- Excellent visibility and easy access
- Ample parking - 388 stalls
- Great for restaurant, office, retail or business professional services tenant
- 10 minutes from SeaTac International Airport
- 14,533 ADT on SR 509

CO-TENANTS

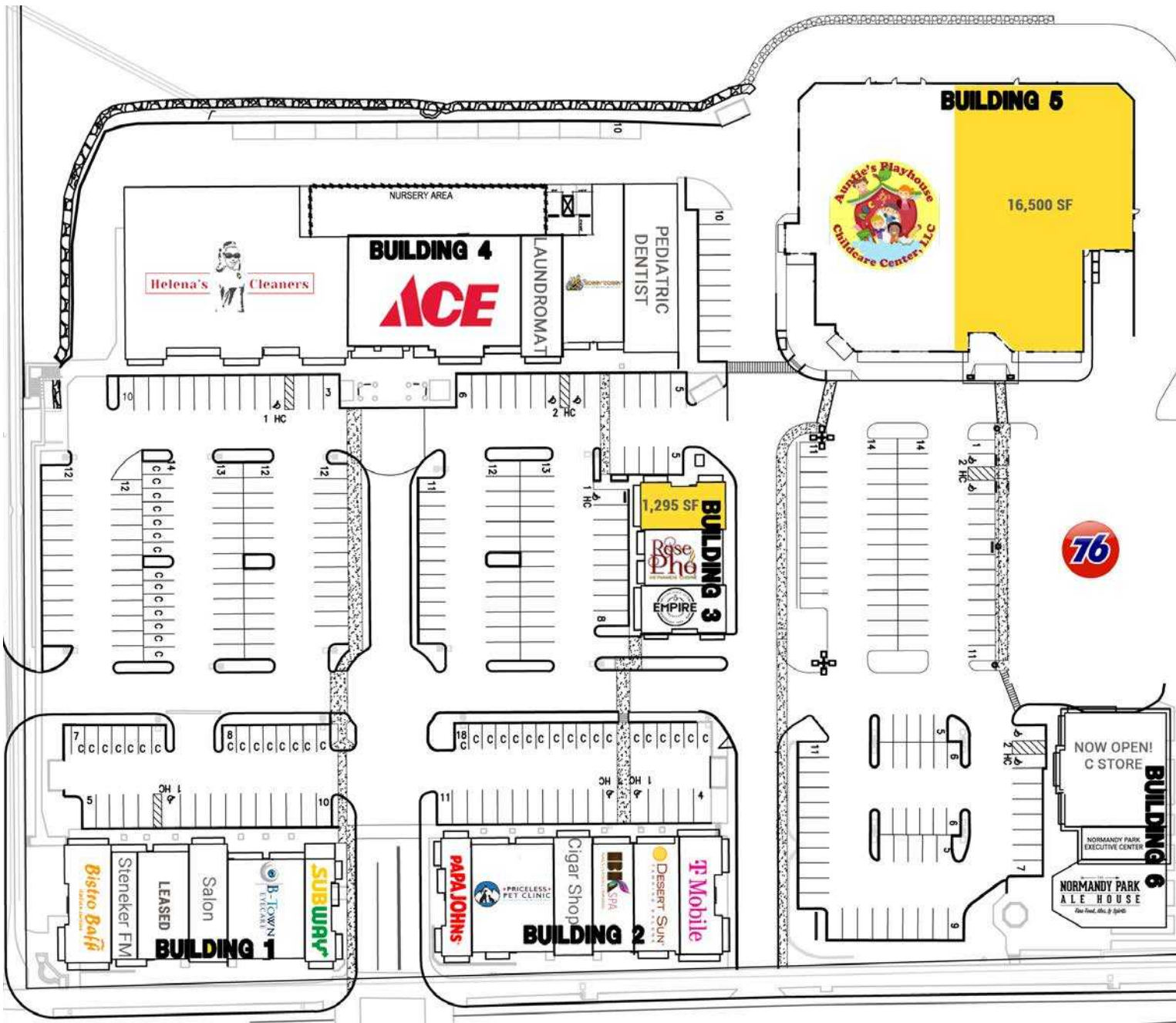
- Ace Hardware
- Normandy Park Ale House
- Subway
- Papa John's
- T-Mobile

DEMOGRAPHICS

	Population	Average HH Income	Daytime Population
Mile 1	10,321	\$167,233	2,893
Mile 3	66,644	\$136,990	30,446
Mile 5	159,046	\$130,957	95,379

Regis - 2024



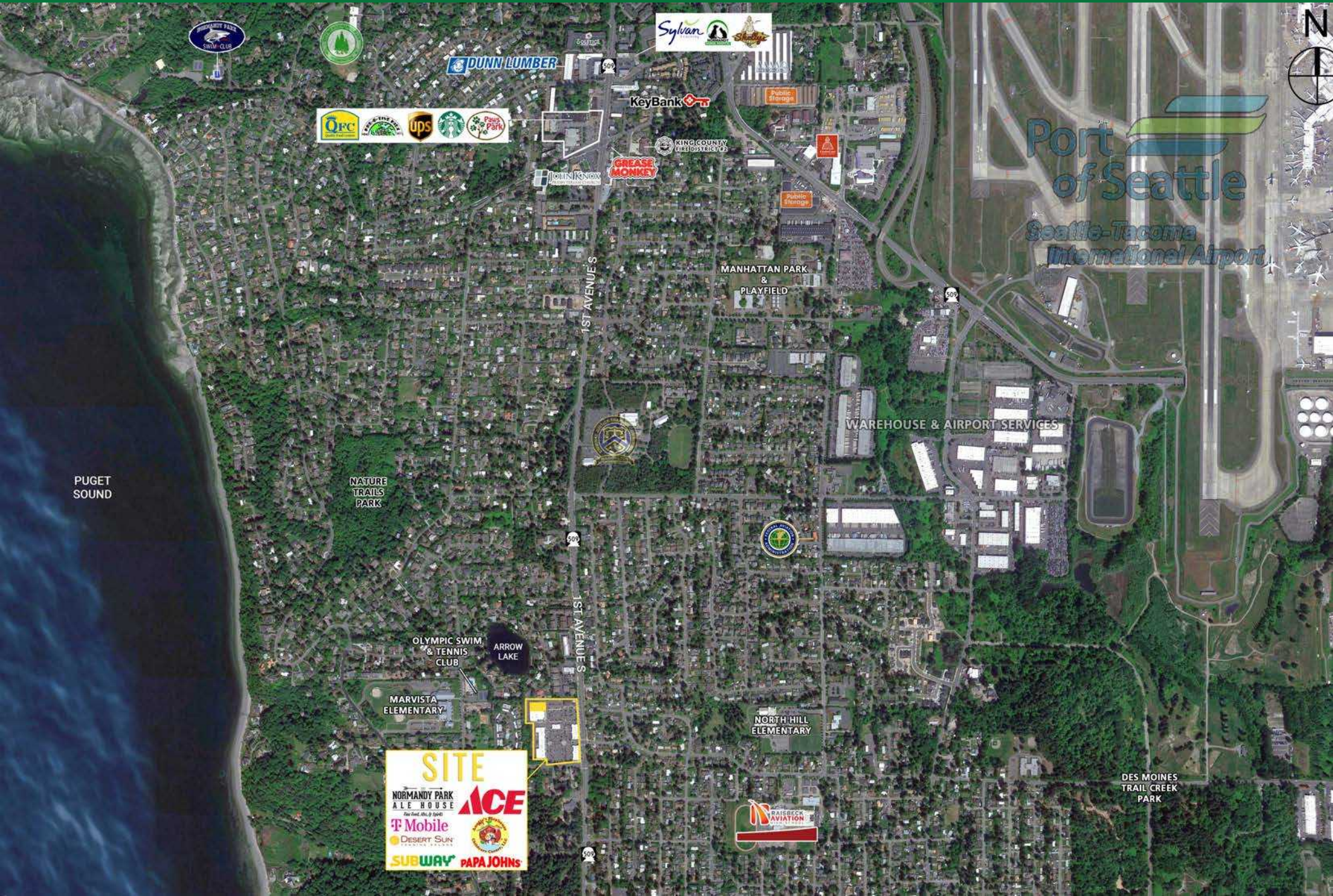


NOW OPEN!



NORMANDY PARK TOWNE CENTER

Normandy Park, WA



PUGET SOUND

NATURE TRAILS PARK

OLYMPIC SWIM & TENNIS CLUB

ARROW LAKE

MARVISTA ELEMENTARY

NORTH HILL ELEMENTARY

DES MOINES TRAIL CREEK PARK

WAREHOUSE & AIRPORT SERVICES

MANHATTAN PARK & PLAYFIELD

1ST AVENUE S

1ST AVENUE S

50th

Port of Seattle
Seattle-Tacoma International Airport

SITE
NORMANDY PARK ALE HOUSE
T-Mobile
DESERT SUN
SUBWAY PAPA JOHNS

PAISBECK AVIATION

QFC
Starbucks
Papa John's

DUNN LUMBER

KeyBank

GREASE MONKEY

KING COUNTY AIRPORT CENTER

Sylvan

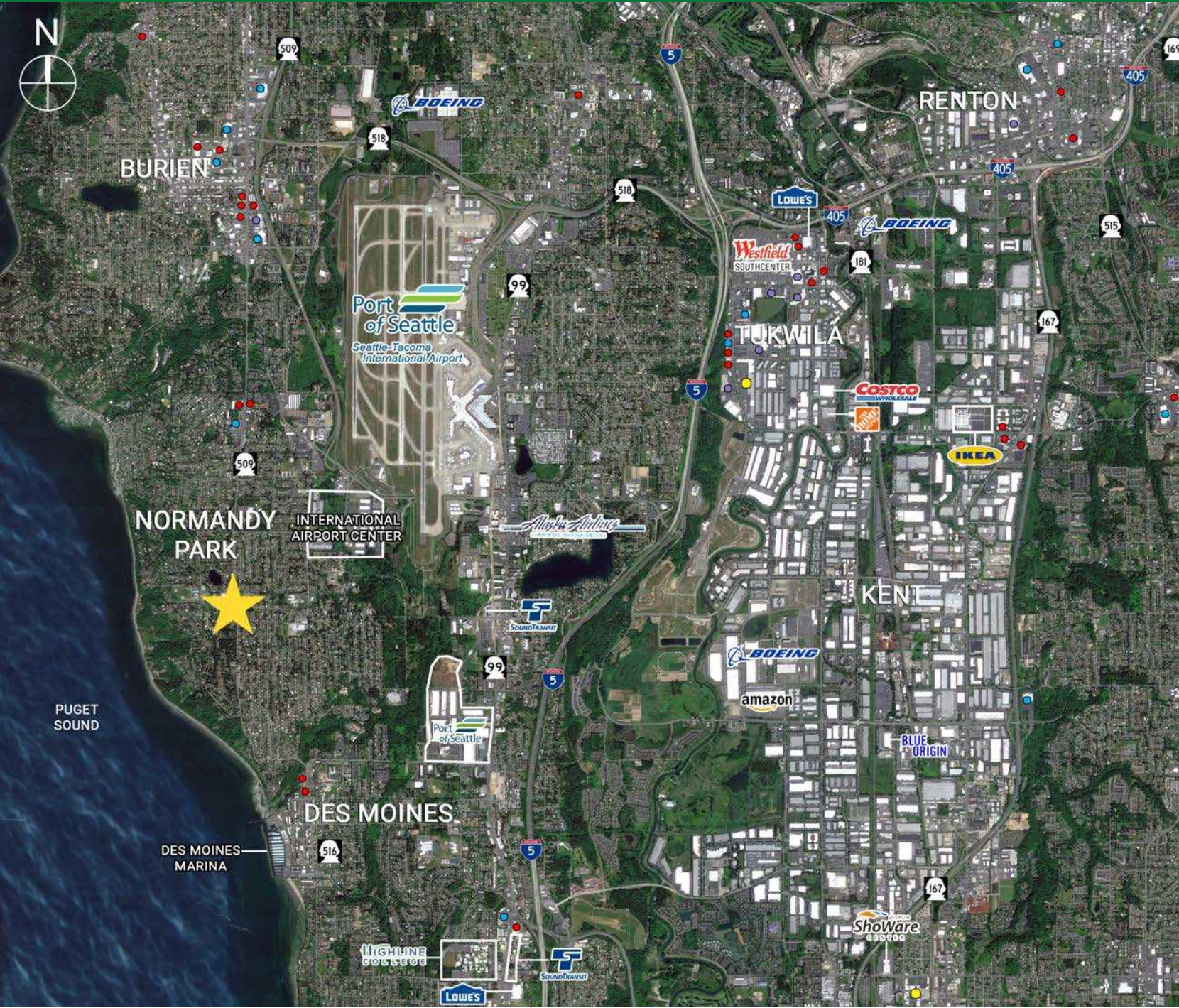
NORMANDY PARK SWIM CLUB



NORMANDY PARK TOWNE CENTER

Normandy Park, WA

REGIONAL RETAIL CENTERS



RETAIL CENTERS	
●	Regional Center
●	Community Center
●	Neighborhood Center
●	Grocery Anchored