



7,375 SF 3rd Floor Office Space for Lease

3257 16th Avenue West, Seattle, WA 98119

Property Details

3257 16th Ave W

Property Address:	3257 16th Avenue West, Seattle
Base Rent:	\$20.00/SF/Year NNN
2024 NNN (estimated):	\$8.87/SF/Year
2024 Property Taxes:	\$70,939.09
Total Building Size:	26,389 SF
Available Square Feet:	7,375 SF
Lot Size:	18,000 SF
Zoning:	IG2 U/45



Building Features

- Fully Sprinklered
- Elevator
- Ample parking
- 120/208v power & 277/480v power
- Across the street from the future Seattle Storm practice facility
- Excellent Interbay location between the Magnolia, Queen Anne and Ballard neighborhoods
- Great visibility and signage opportunities



Property Details

3257 16th Ave W

Suite 300

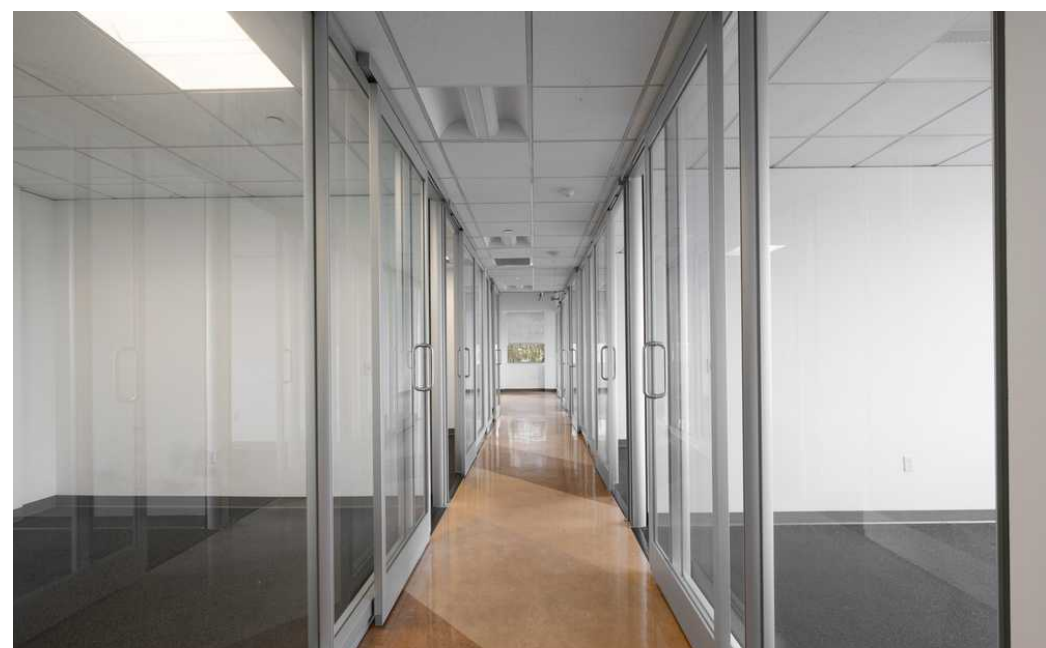
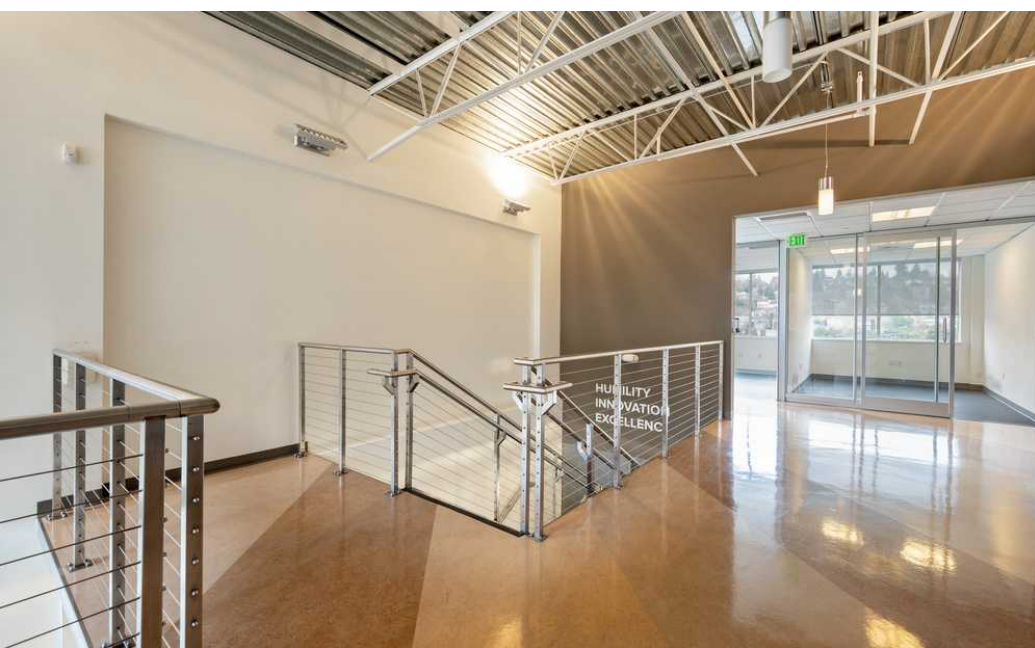
3rd Floor - 7,375 SF

- 20 private offices with tons of natural light
- Excellent territorial views
- 1 large conference room
- 6 private interior offices
- Kitchenette/break room
- Server room
- Air Conditioning
- Private Restrooms
- 10 dedicated off street parking stalls



3rd Floor Photos

3257 16th Ave W



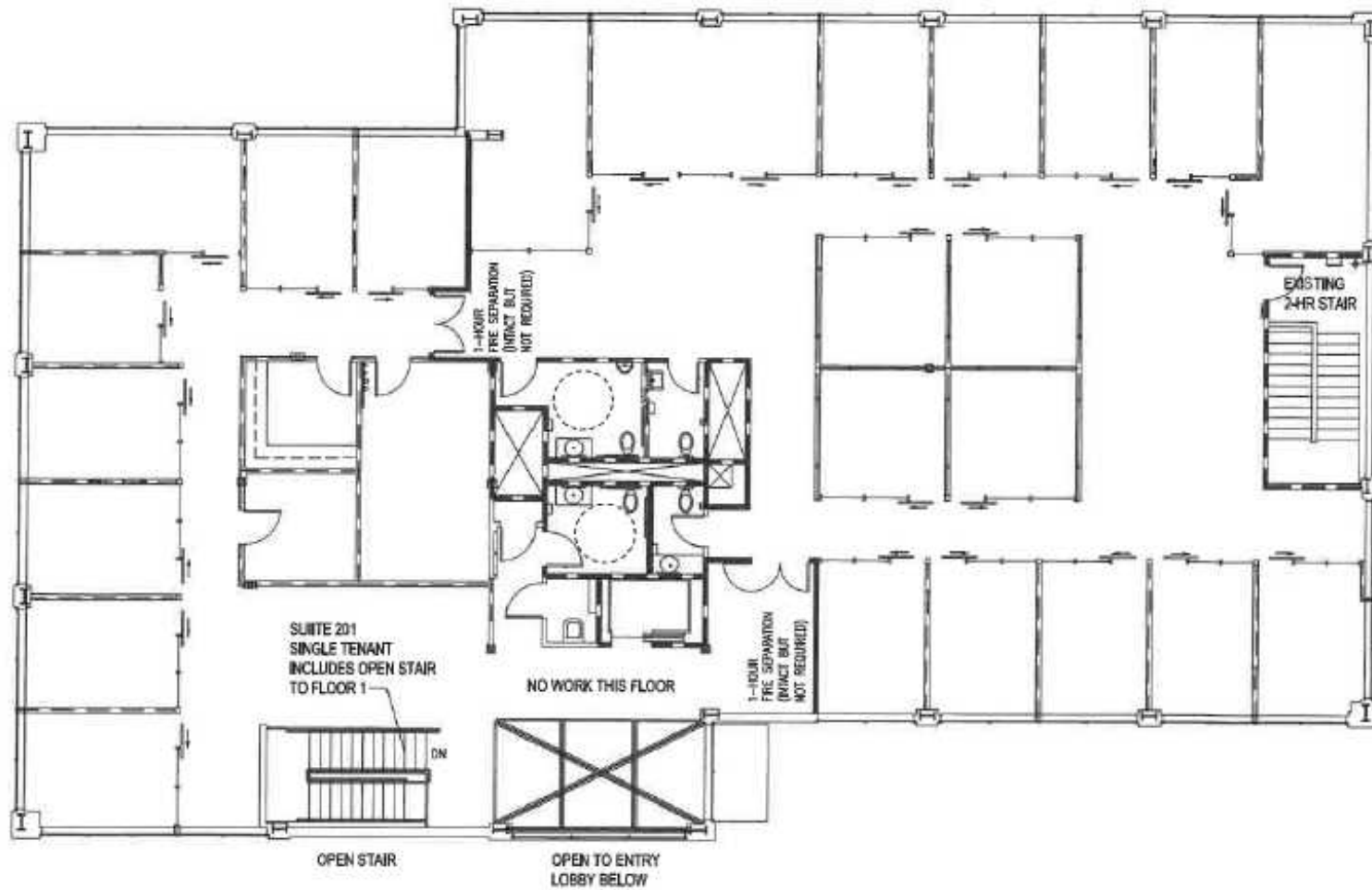
Aerial Photos

3257 16th Ave W



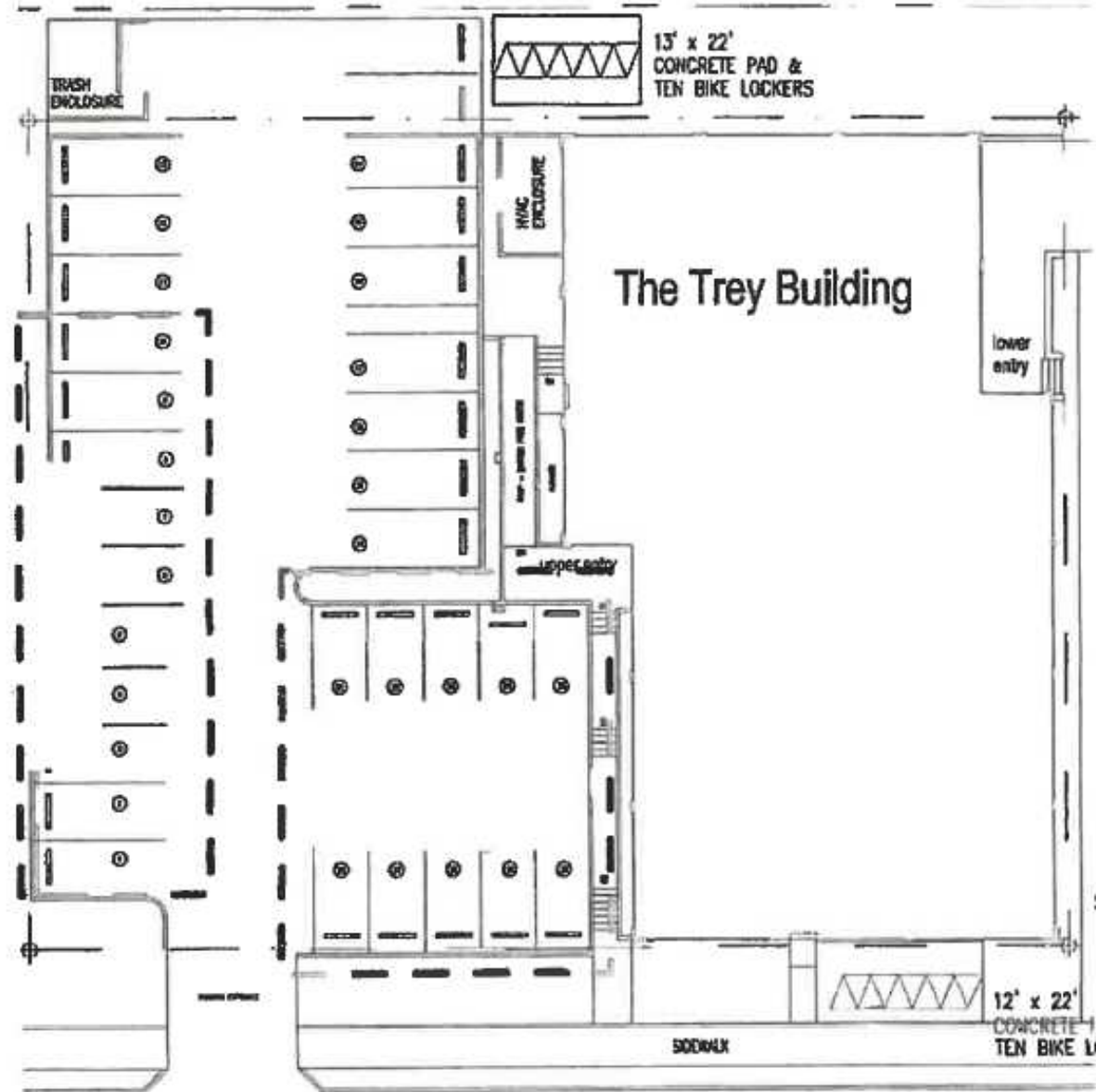
Floor Plan - 3rd Floor

3257 16th Ave W



Parking Diagram

3257 16th Ave W



Exclusively Listed by:

Lauren M Hendricks

Windermere Real Estate Midtown Commercial

99 Blanchard St

Seattle, WA 98121

(206) 999-9161

LaurenHendricks@Windermere.com

www.CommercialSeattle.com

