

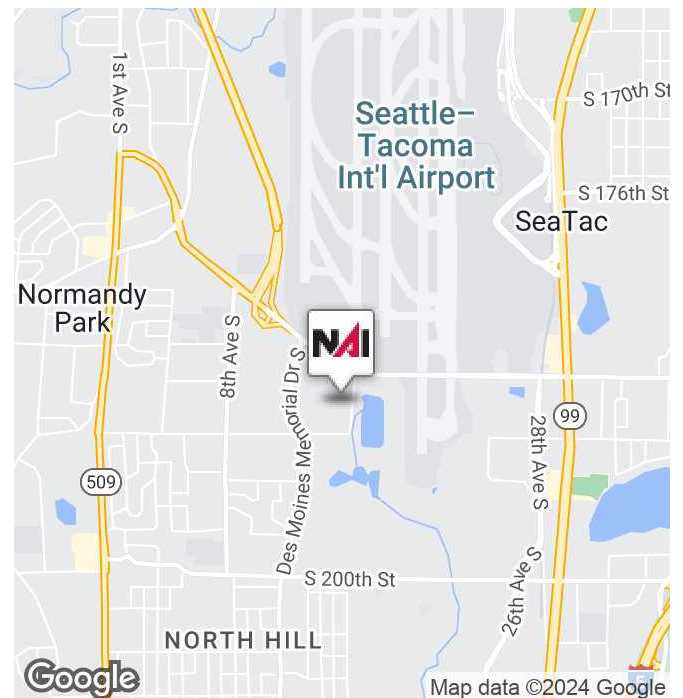


16th Avenue Industrial Building

19003 & 19005 16th Ave S, SeaTac, WA 98188

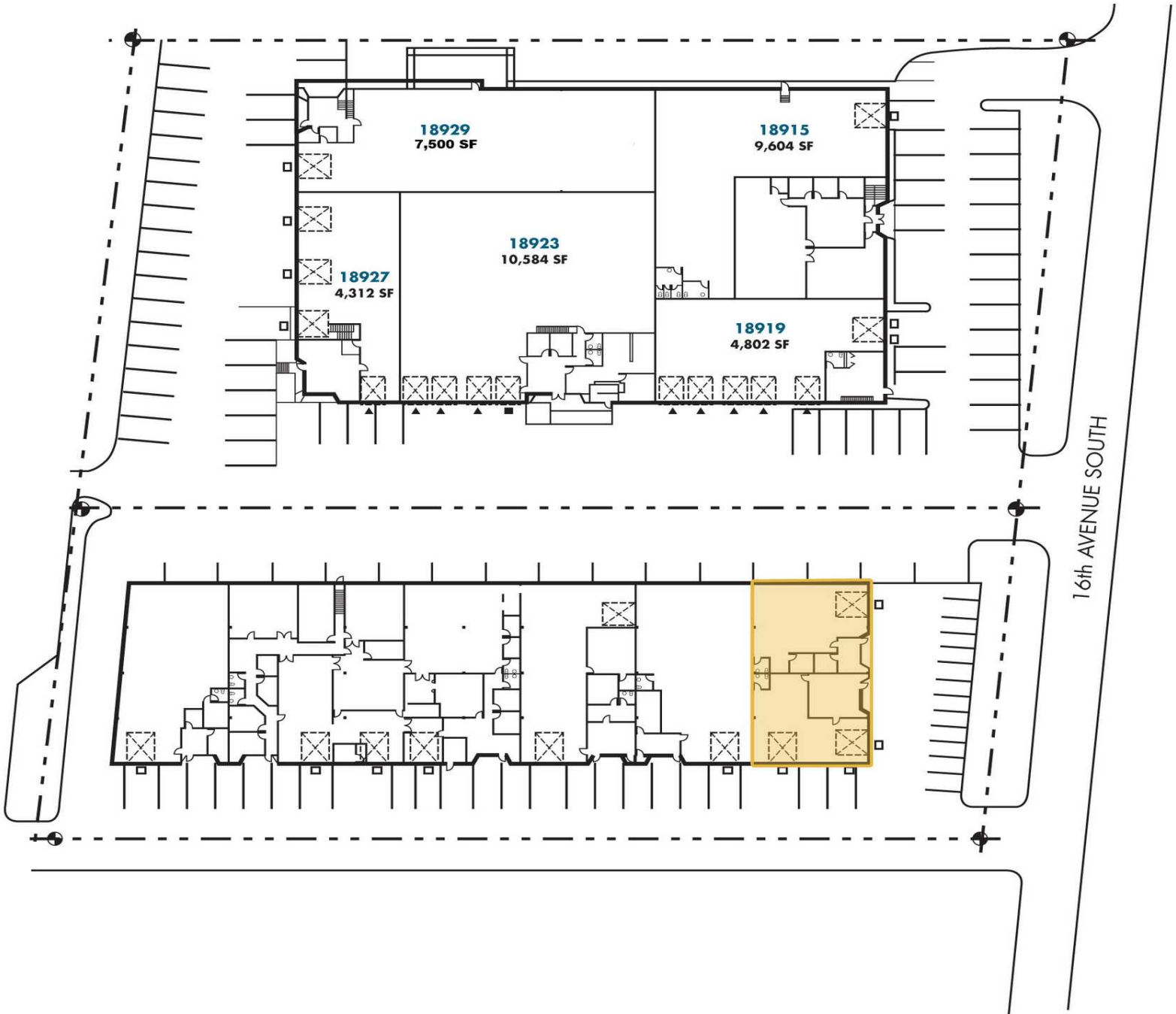
Property Highlights

- 4,250 SF available (847 SF office)
- End cap space
- 3 GL loading doors
- 16' clear height
- Available 8/1/2024
- Sublease through 7/31/2026
- New asphalt in loading & parking areas
- Sublease Rate: \$.90 PSF, NNN (shell), \$1.10 PSF, NNN (office)
- NNN = \$0.385



Will Schmidt

Associate Vice President | 206.794.0421
wschmidt@nai-psp.com



LEGEND

- ▲ DOCK-HIGH DOOR
- GRADE-LEVEL DOOR



Will Schmidt
 Associate Vice President | 206.794.0421
 wschmidt@nai-psp.com

