



FOR LEASE

85,073 SF

850 SF Office

24' Clear height

15 Dock positions

2 Drive-in doors

Heavy power

Heavy Industrial Zoning

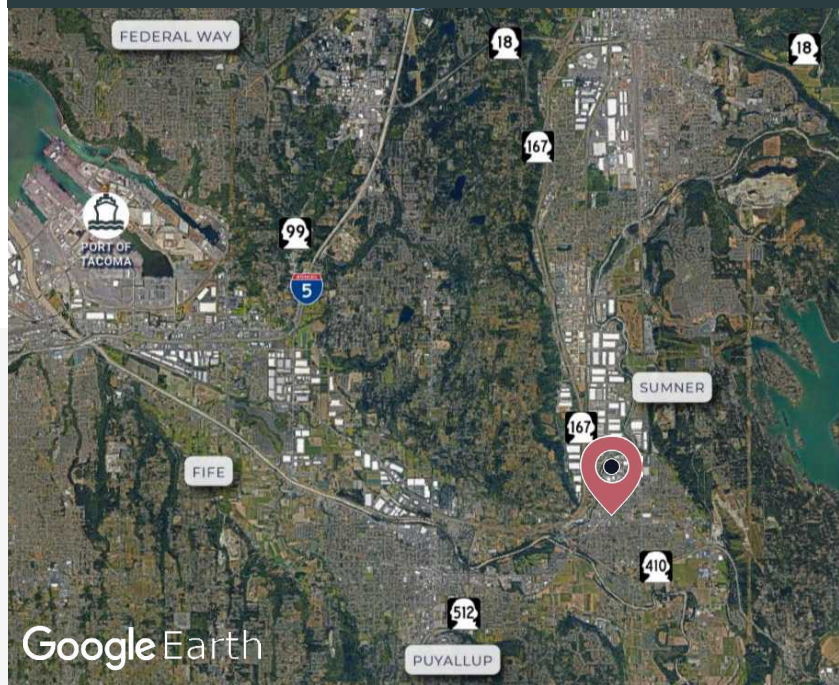
Heavy load slab

ESFR Sprinklered

Excess trailer parking



**2005 FRYAR
AVENUE**
SUMNER, WA 98390



Google Earth

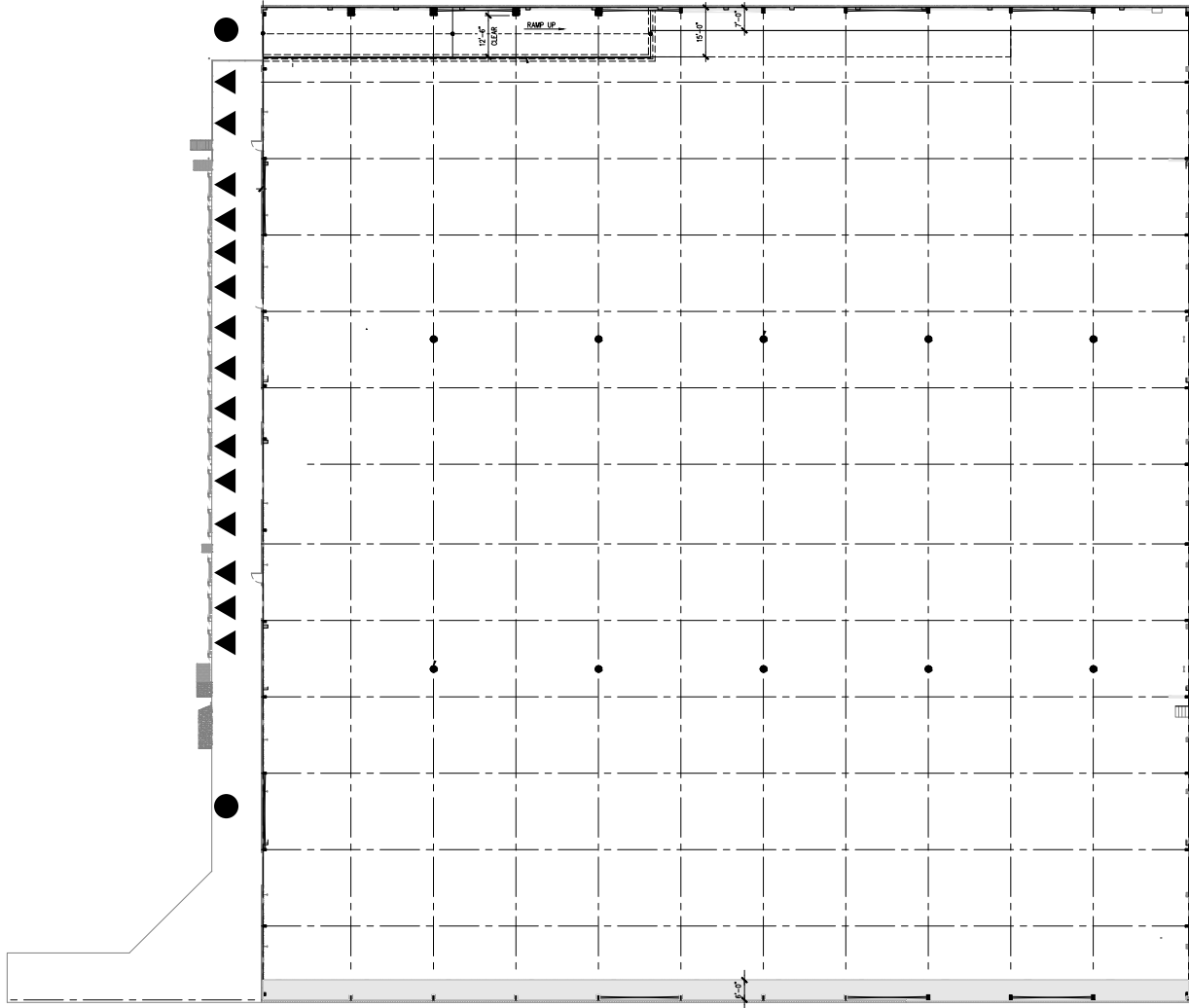
Michael Roy
206 940 7199
michael.roy@kbcadvisors.com

Hans Vieser
425 765 7926
hans.vieser@kbcadvisors.com

Brady Thomson
646 951 7219
bthomson@fortress.com

Property Specs

2005 Fryar Avenue, Sumner, WA 98390



85,073 SF

850 SF Office

24' Clear height

15 Dock positions

2 Drive-in doors

Heavy power

Heavy load slab

ESFR Sprinklered

Excess trailer parking



▲ DOCK POSITION
● DRIVE-IN DOOR

Please contact

Michael Roy

206 940 7199

michael.roy@kbcadvisors.com

Hans Vieser

425 765 7926

hans.vieser@kbcadvisors.com

Brady Thomson

646 951 7219

bthomson@fortress.com

KBCADVISORS.COM

© 2024 KBC ADVISORS This information has been obtained from sources believed to be reliable but has not been verified for accuracy or completeness. You should conduct a careful, independent investigation of the property and verify all information. Any reliance on this information is solely at your own risk. The KBC ADVISORS logo is a service mark of KBC ADVISORS. All other marks displayed on this document are the property of their respective owners. Photos herein are the property of their respective owners. Use of these images without the express written consent of the owners is prohibited.