



AUBURN ITC

INDUSTRIAL FOR LEASE

11,100 SF total

1,270 SF office

Easy access to SR-167 via 277th St or 15th St and access to I-5 via 277th St

M-1 zoning

4 dock-high doors

1 grade-level door

Canopies over loading doors

50' concrete aprons

24' clear height

\$1.40 shell rate

\$1.30 office rate

Available November 1, 2024

For more leasing information contact

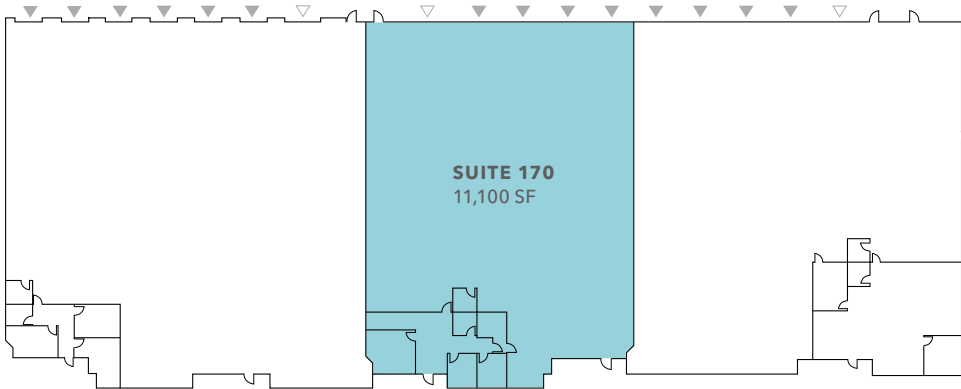
CHRIS CORR

206.248.7324

chris.corr@kidder.com

KIDDER.COM

FOR LEASE



11,100 SF

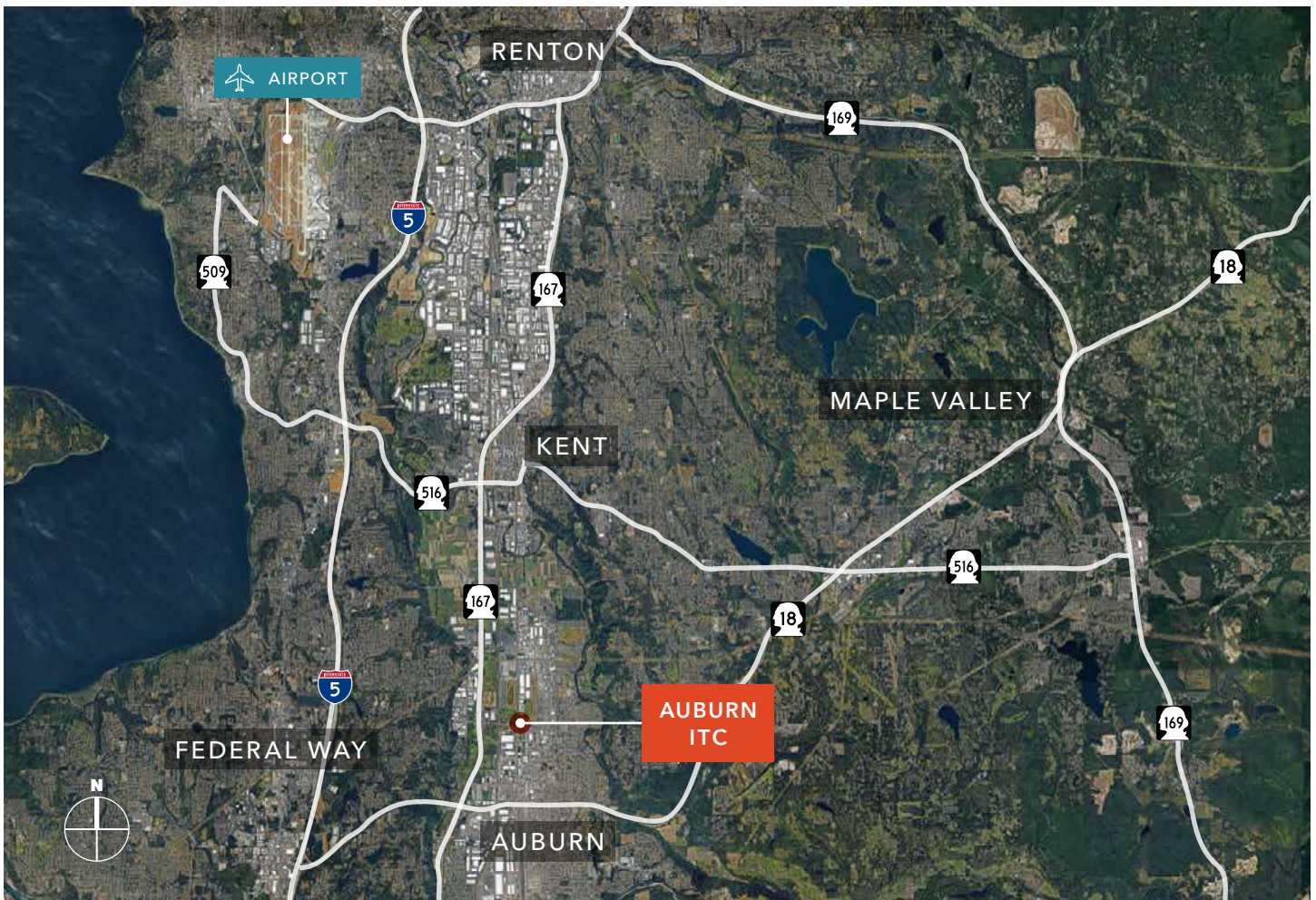
BUILDING B, SUITE 170

1,270 SF

OFFICE

24'

CLEAR HEIGHT



KIDDER.COM

This information supplied herein is from sources we deem reliable. It is provided without any representation, warranty, or guarantee, expressed or implied as to its accuracy. Prospective Buyer or Tenant should conduct an independent investigation and verification of all matters deemed to be material, including, but not limited to, statements of income and expenses. Consult your attorney, accountant, or other professional advisor.

