



# FOR LEASE



**Kidder  
Mathews**

## Three-Story Medical Office Building

40,512 SF PREMIER MEDICAL OFFICE BUILDING | 8301 161ST AVENUE NE | REDMOND, WA

**FOR LEASE**

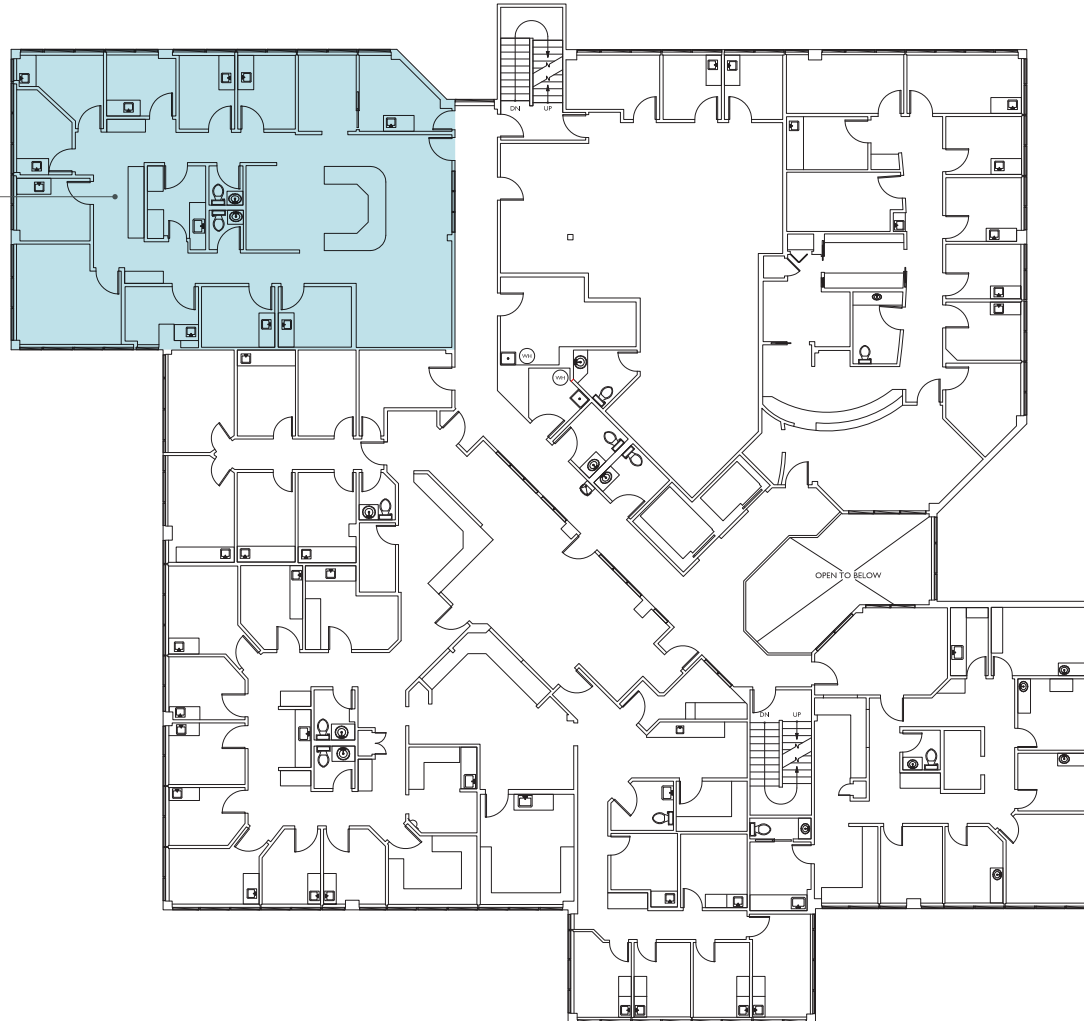
# Redmond Medical Center

8301 161ST AVE NE, REDMOND, WA

## Floor Plan Overview

**SECOND FLOOR**

**SUITE 204  
2,517 RSF**



**KIDDER.COM**

This information supplied herein is from sources we deem reliable. It is provided without any representation, warranty, or guarantee, expressed or implied as to its accuracy. Prospective Buyer or Tenant should conduct an independent investigation and verification of all matters deemed to be material, including, but not limited to, statements of income and expenses. Consult your attorney, accountant, or other professional advisor.

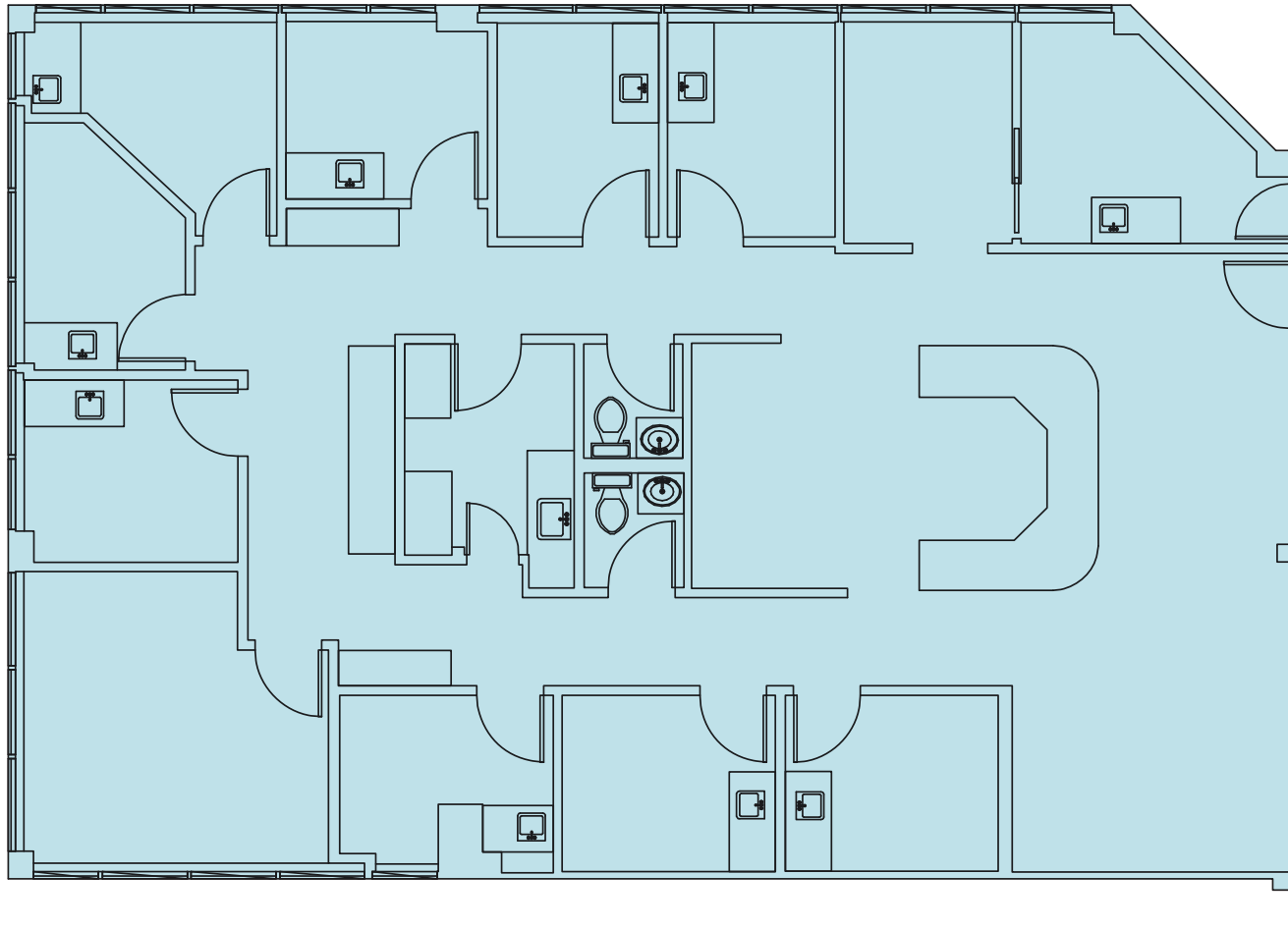
**km** Kidder  
Mathews

**FOR LEASE**

# Redmond Medical Center

8301 161ST AVE NE, REDMOND, WA

**Suite 204**



**2,517 RSF**

**MEDICAL SPACE  
AVAILABLE NOW**

**CONTACT**

**AGENTS FOR PRICING**

**KIDDER.COM**

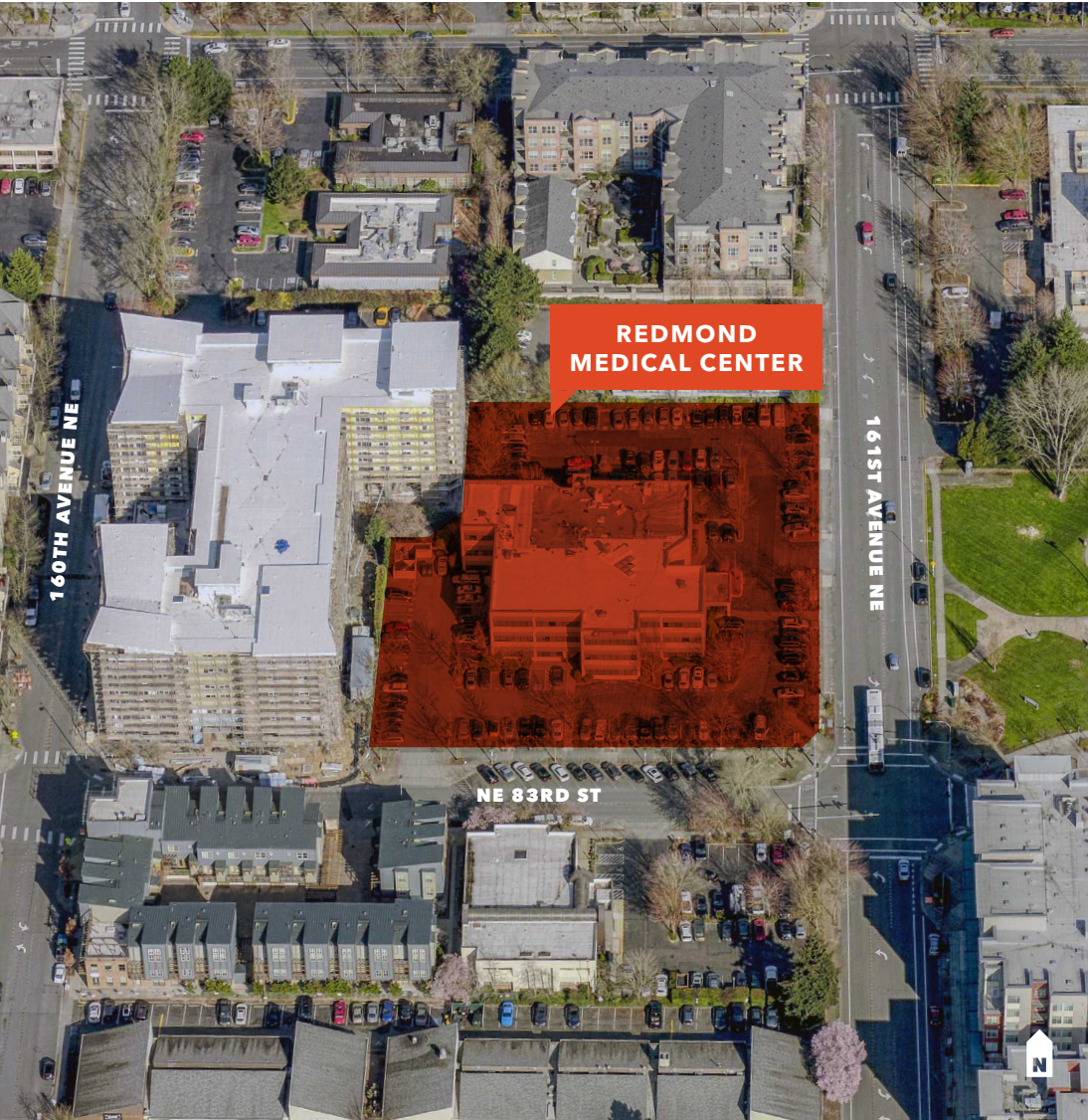
This information supplied herein is from sources we deem reliable. It is provided without any representation, warranty, or guarantee, expressed or implied as to its accuracy. Prospective Buyer or Tenant should conduct an independent investigation and verification of all matters deemed to be material, including, but not limited to, statements of income and expenses. Consult your attorney, accountant, or other professional advisor.

**km Kidder  
Mathews**

**FOR LEASE**

# Redmond Medical Center

8301 161ST AVE NE, REDMOND, WA



**REDMOND  
MEDICAL CENTER**



**3-STORY, 40,512 SF  
CLASS A MEDICAL BUILDING**



**EXCELLENT DOWNTOWN  
REDMOND LOCATION**



**AMPLE SURFACE PARKING  
3.5/1,000 PARKNG RATIO**



**NEWLY RENOVATED  
COMMON AREAS**

**WALKING** distance to Redmond Transit Center and future Light Rail station

**PROFESSIONALLY** managed by InCity Properties

**FIRE SPRINKLERED** building (allows for medical surgery and sedation procedures)

**24 HOUR** access, 365 days per year. Security for front doors and HVAC hours:

**FREE** two-hour street parking for patients

Monday - Friday: 7am - 6pm,  
Saturday: 8am - 1pm

**INTERNET** providers include Comcast and Frontier

After hours HVAC available on demand

**GURNEY** sized elevator (24' x 84")

**TIM CHIN**  
425.450.1119  
[tim.chin@kidder.com](mailto:tim.chin@kidder.com)

**SUN W. CHOY**  
425.450.1128  
[sun.choy@kidder.com](mailto:sun.choy@kidder.com)

[KIDDER.COM](http://KIDDER.COM)

This information supplied herein is from sources we deem reliable. It is provided without any representation, warranty, or guarantee, expressed or implied as to its accuracy. Prospective Buyer or Tenant should conduct an independent investigation and verification of all matters deemed to be material, including, but not limited to, statements of income and expenses. Consult your attorney, accountant, or other professional advisor.



**FOR LEASE**

# Redmond Medical Center

8301 161ST AVE NE, REDMOND, WA



**BELLA BOTTEGA SHOPPING CENTER**

MudBay	Bartell Drugs	MOD
OFC	REGAL	EvergreenHealth

DSW	RITE AID	SAFeway
ROSS	ULTA	Panera

**REDMOND TOWN CENTER**

BK's	Bath & Body Works	GENE JUAREZ
Red Robin	Starbucks	Orangetheory
AT&T	petco	zumiez

KOHL'S
THE HOME DEPOT
target

Fred Meyer
WORLD MARKET
BED BATH & BEYOND

MERCURY COFFEES
WHOLE FOODS MARKET
PIZZA HUT
BLAZING BAGELS

Ben Franklin	Staples	Starbucks
TRADER JOE'S	OFC	WESTERN UNION

KIDDER.COM

This information supplied herein is from sources we deem reliable. It is provided without any representation, warranty, or guarantee, expressed or implied as to its accuracy. Prospective Buyer or Tenant should conduct an independent investigation and verification of all matters deemed to be material, including, but not limited to, statements of income and expenses. Consult your attorney, accountant, or other professional advisor.

