

NORTHUP NORTH BUILDINGS A & D

Newly updated office space for lease

2300/2340 130TH AVE NE, BELLEVUE, WA

km Kidder
Mathews

FOR LEASE

Northup North Office Park Bldgs A & D

2300/2340 130TH AVE NE, BELLEVUE, WA

BUILDING A AVAILABILITY

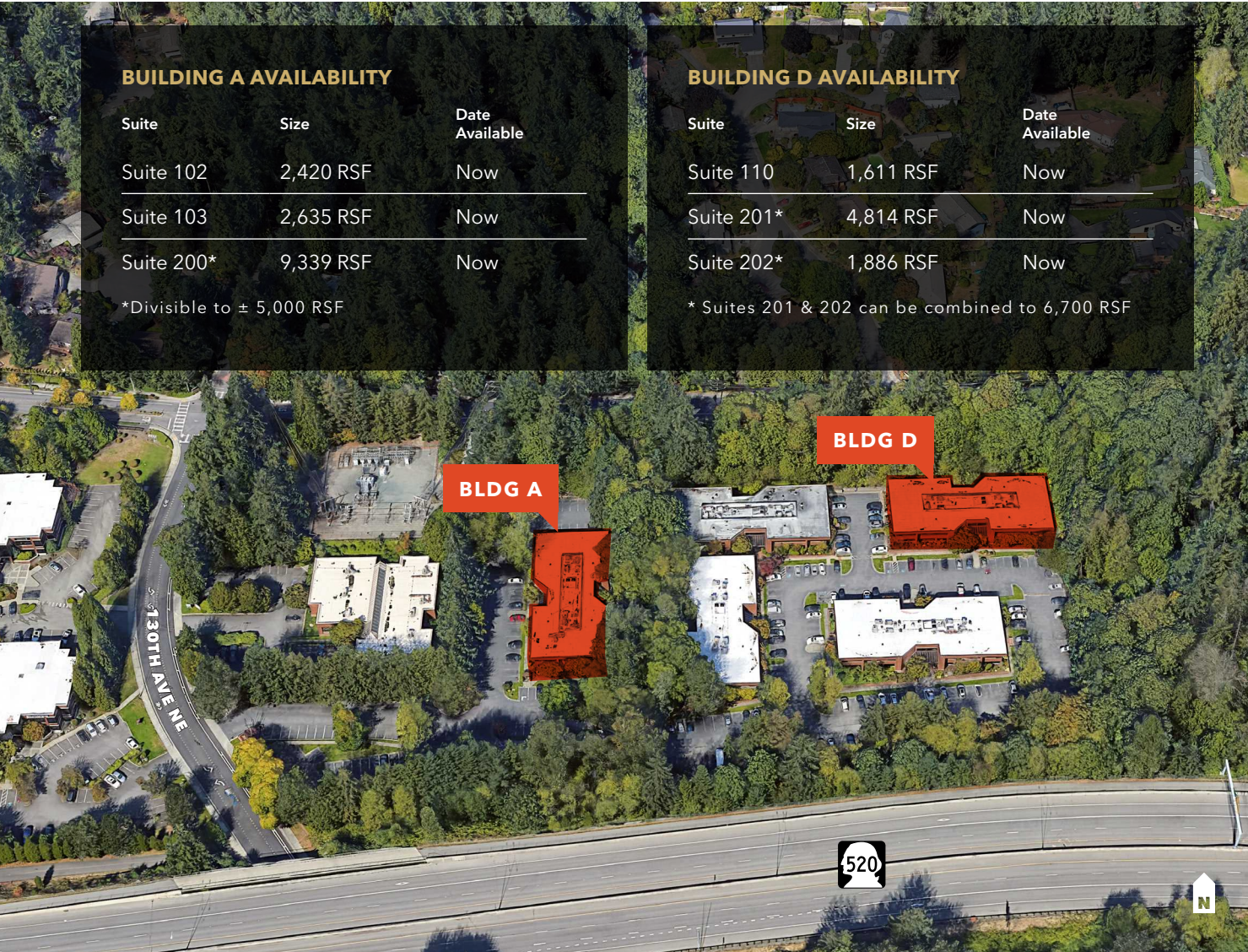
Suite	Size	Date Available
Suite 102	2,420 RSF	Now
Suite 103	2,635 RSF	Now
Suite 200*	9,339 RSF	Now

*Divisible to ± 5,000 RSF

BUILDING D AVAILABILITY

Suite	Size	Date Available
Suite 110	1,611 RSF	Now
Suite 201*	4,814 RSF	Now
Suite 202*	1,886 RSF	Now

* Suites 201 & 202 can be combined to 6,700 RSF



NEWLY updated with direct/indirect lighting, ceiling grid and tiles, carpet, and paint

ABUNDANCE of natural light with 360-degree window views

NEAR SR-520, I-405 & Northup Way

BEAUTIFULLY landscaped campus, surrounded by greenbelt with hiking trails

PLENTIFUL free surface parking, 3.8 / 1,000 SF ratio

FIBER OPTIC Internet provided by Frontier FIOS & Comcast

RATES \$38.00/SF, Full Service

TODD GAUTHIER
425.450.1118
todd.gauthier@kidder.com

JASON BLOOM
425.450.1102
jason.bloom@kidder.com

TIM CHIN
425.450.1119
tim.chin@kidder.com

KIDDER.COM

This information supplied herein is from sources we deem reliable. It is provided without any representation, warranty, or guarantee, expressed or implied as to its accuracy. Prospective Buyer or Tenant should conduct an independent investigation and verification of all matters deemed to be material, including, but not limited to, statements of income and expenses. Consult your attorney, accountant, or other professional advisor.

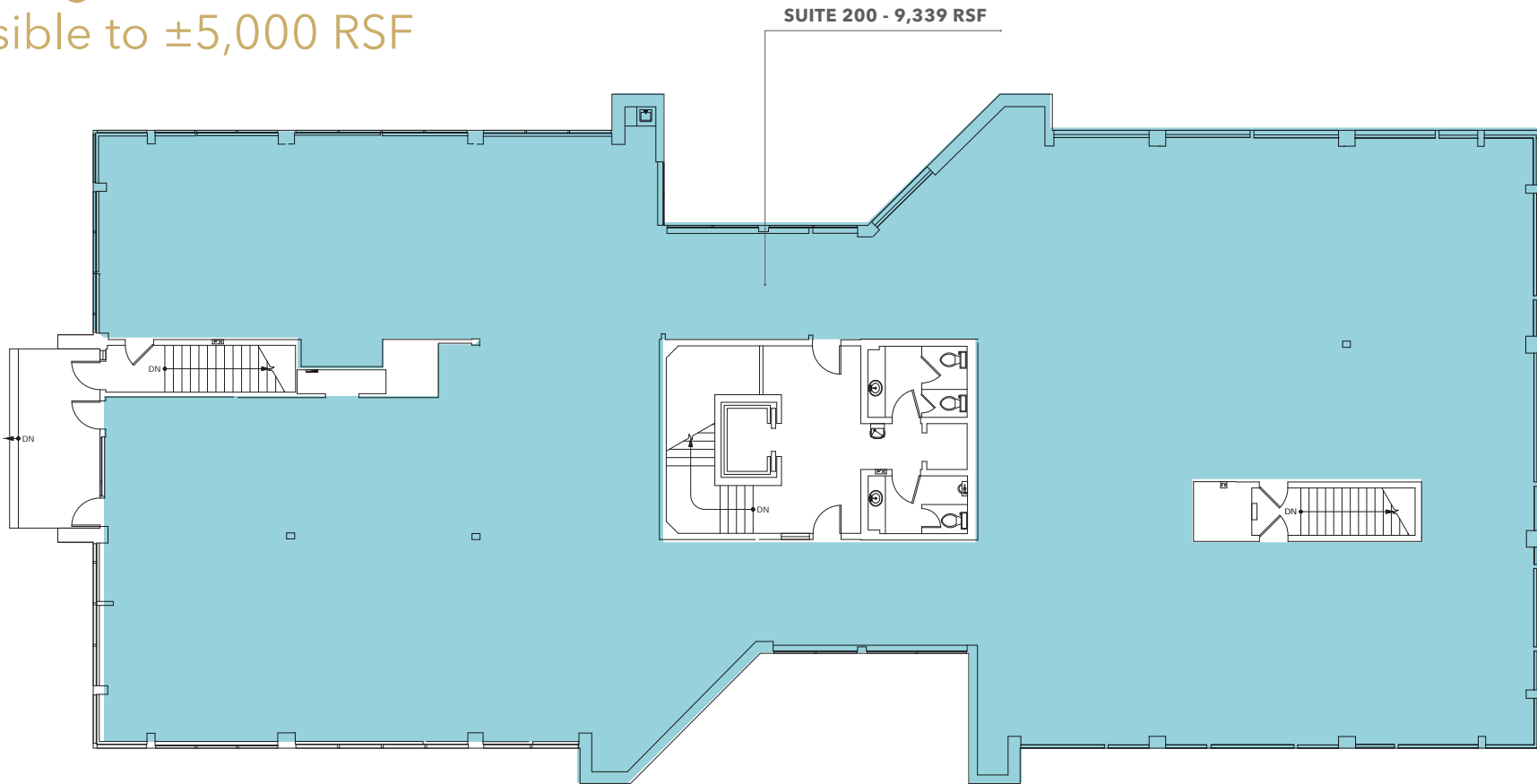
km Kidder Mathews

FOR LEASE

Northup North Office Park - Building A

2300 130TH AVE NE, BELLEVUE, WA

Building A - Second Floor,
divisible to $\pm 5,000$ RSF



TODD GAUTHIER

425.450.1118

todd.gauthier@kidder.com

JASON BLOOM

425.450.1102

jason.bloom@kidder.com

TIM CHIN

425.450.1119

tim.chin@kidder.com

KIDDER.COM

This information supplied herein is from sources we deem reliable. It is provided without any representation, warranty, or guarantee, expressed or implied as to its accuracy. Prospective Buyer or Tenant should conduct an independent investigation and verification of all matters deemed to be material, including, but not limited to, statements of income and expenses. Consult your attorney, accountant, or other professional advisor.

km Kidder
Mathews

FOR LEASE

Northup North Office Park - Building A

2300 130TH AVE NE, BELLEVUE, WA

Suite 200



KIDDER.COM

This information supplied herein is from sources we deem reliable. It is provided without any representation, warranty, or guarantee, expressed or implied as to its accuracy. Prospective Buyer or Tenant should conduct an independent investigation and verification of all matters deemed to be material, including, but not limited to, statements of income and expenses. Consult your attorney, accountant, or other professional advisor.

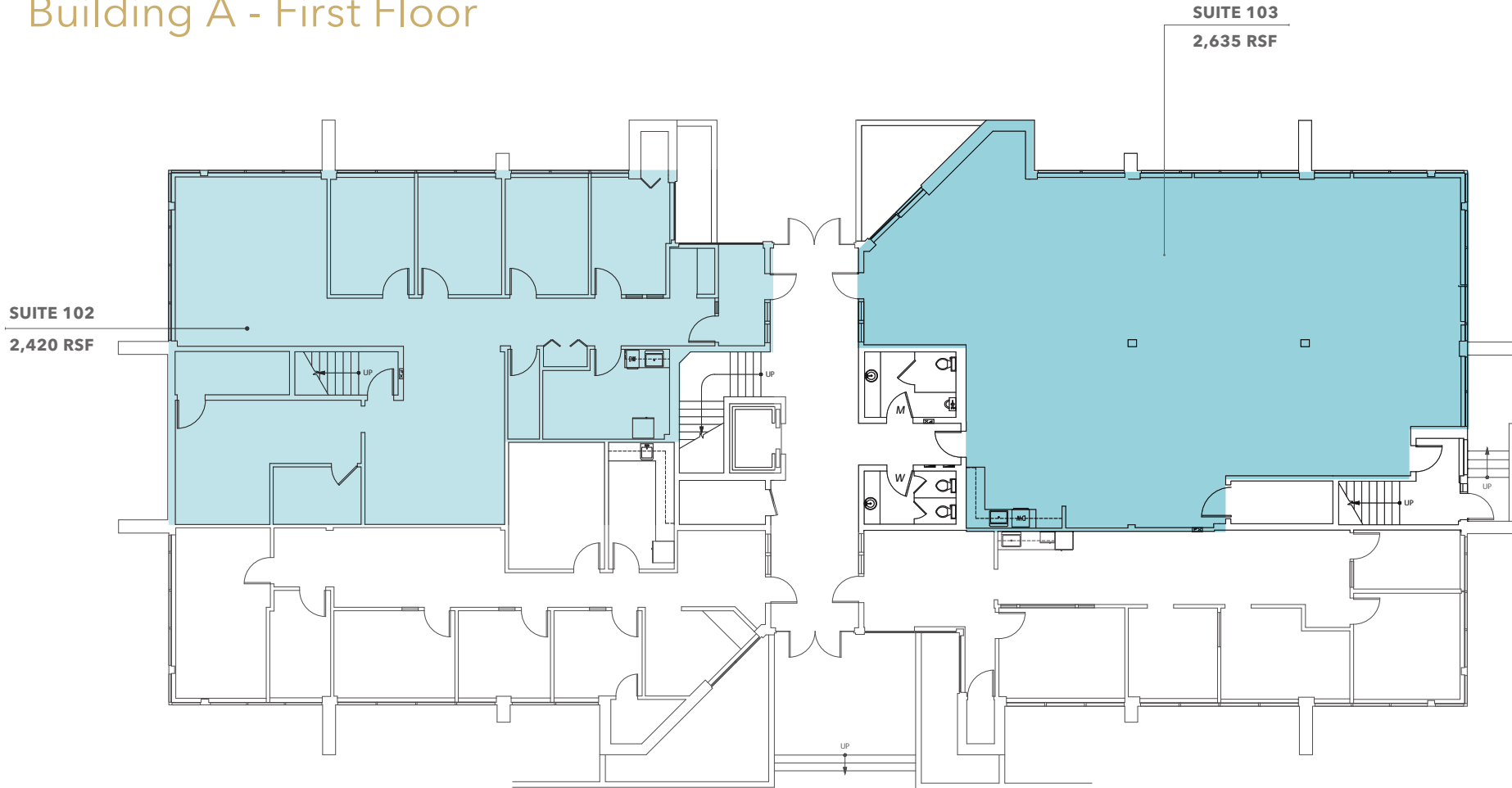
 **Kidder
Mathews**

FOR LEASE

Northup North Office Park - Building A

2300 130TH AVE NE, BELLEVUE, WA

Building A - First Floor



TODD GAUTHIER
425.450.1118
todd.gauthier@kidder.com

JASON BLOOM
425.450.1102
jason.bloom@kidder.com

TIM CHIN
425.450.1119
tim.chin@kidder.com

KIDDER.COM

This information supplied herein is from sources we deem reliable. It is provided without any representation, warranty, or guarantee, expressed or implied as to its accuracy. Prospective Buyer or Tenant should conduct an independent investigation and verification of all matters deemed to be material, including, but not limited to, statements of income and expenses. Consult your attorney, accountant, or other professional advisor.



FOR LEASE

Northup North Office Park - Building A

2300 130TH AVE NE, BELLEVUE, WA

Suite 103



KIDDER.COM

This information supplied herein is from sources we deem reliable. It is provided without any representation, warranty, or guarantee, expressed or implied as to its accuracy. Prospective Buyer or Tenant should conduct an independent investigation and verification of all matters deemed to be material, including, but not limited to, statements of income and expenses. Consult your attorney, accountant, or other professional advisor.

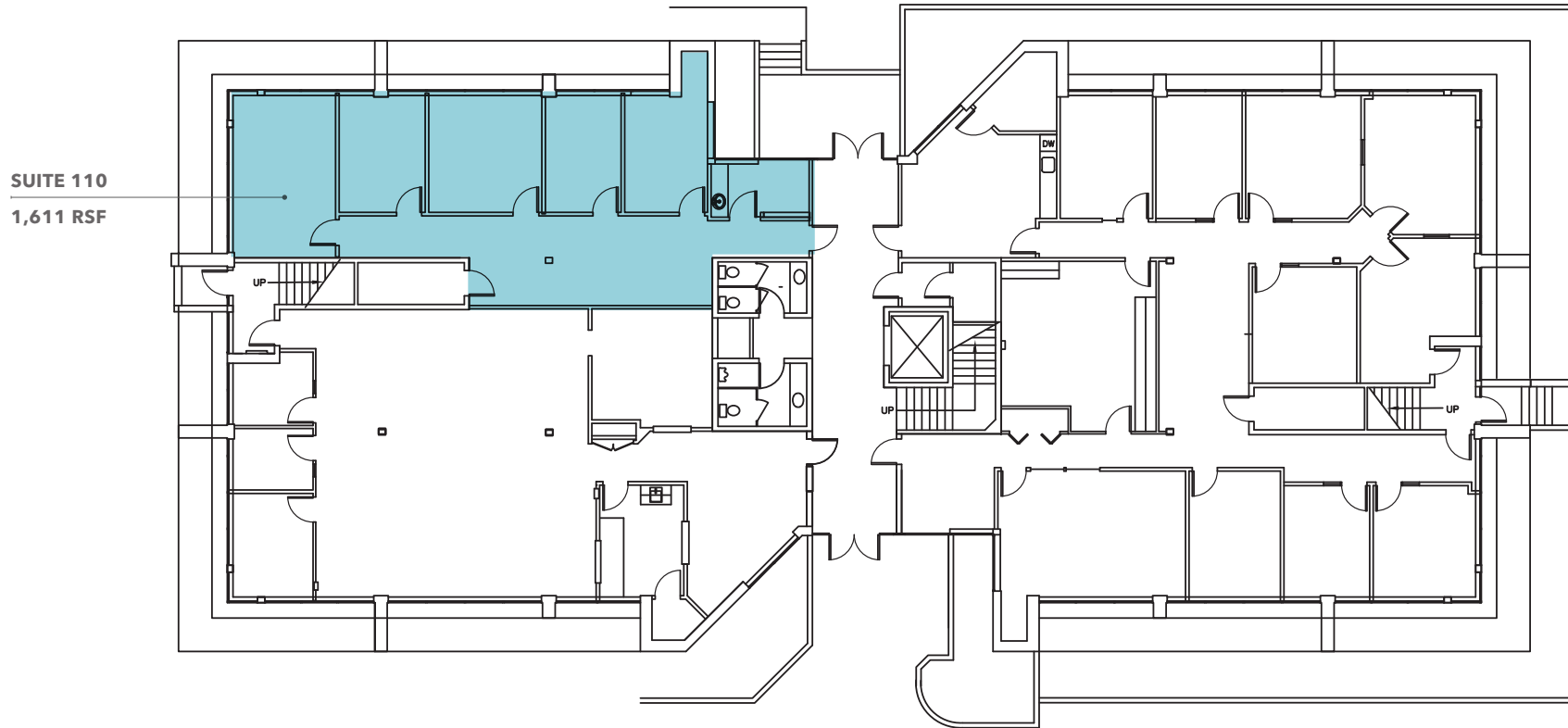
km Kidder
Mathews

FOR LEASE

Northup North Office Park Bldg D

2340 130TH AVE NE, BELLEVUE, WA

Building D - First Floor



TODD GAUTHIER
425.450.1118
todd.gauthier@kidder.com

JASON BLOOM
425.450.1102
jason.bloom@kidder.com

TIM CHIN
425.450.1119
tim.chin@kidder.com

KIDDER.COM

This information supplied herein is from sources we deem reliable. It is provided without any representation, warranty, or guarantee, expressed or implied as to its accuracy. Prospective Buyer or Tenant should conduct an independent investigation and verification of all matters deemed to be material, including, but not limited to, statements of income and expenses. Consult your attorney, accountant, or other professional advisor.

km Kidder
Mathews

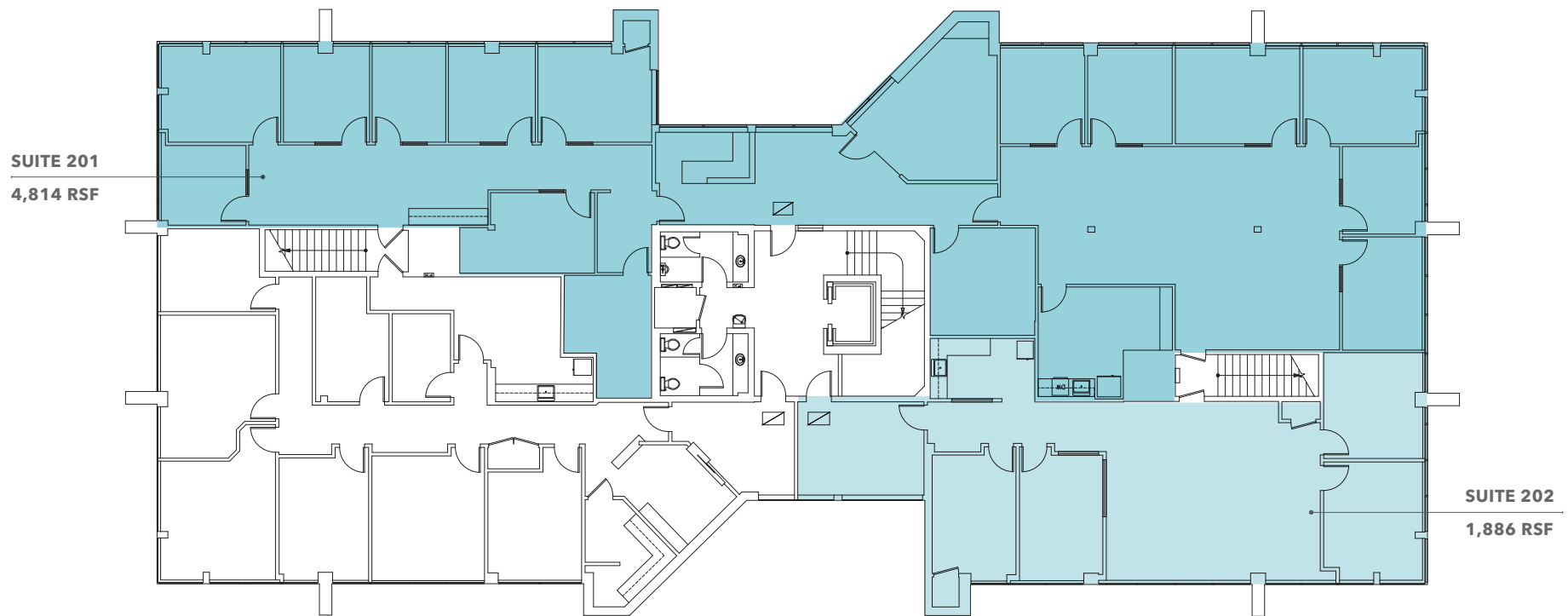
FOR LEASE

Northup North Office Park Bldg D

2340 130TH AVE NE, BELLEVUE, WA

Building D - Second Floor

Suites can be combined to 6,700 RSF



TODD GAUTHIER
425.450.1118
todd.gauthier@kidder.com

JASON BLOOM
425.450.1102
jason.bloom@kidder.com

TIM CHIN
425.450.1119
tim.chin@kidder.com

KIDDER.COM

This information supplied herein is from sources we deem reliable. It is provided without any representation, warranty, or guarantee, expressed or implied as to its accuracy. Prospective Buyer or Tenant should conduct an independent investigation and verification of all matters deemed to be material, including, but not limited to, statements of income and expenses. Consult your attorney, accountant, or other professional advisor.





For leasing information contact

TODD GAUTHIER

425.450.1118

todd.gauthier@kidder.com

JASON BLOOM

425.450.1102

jason.bloom@kidder.com

TIM CHIN

425.450.1119

tim.chin@kidder.com

KIDDER.COM

This information supplied herein is from sources we deem reliable. It is provided without any representation, warranty, or guarantee, expressed or implied as to its accuracy. Prospective Buyer or Tenant should conduct an independent investigation and verification of all matters deemed to be material, including, but not limited to, statements of income and expenses. Consult your attorney, accountant, or other professional advisor.