



# DES MOINES SQUARE

22014 7th Ave S | Des Moines

## AVAILABILITY FOR LEASE:

**Suite 202 - 750 SF**

**Suite 203 - 750 SF**

**Suite 301 - 300 SF**

Levi Bundrant  
*Associate*  
425-409-7405  
[Levi.Bundrant@nrmk.com](mailto:Levi.Bundrant@nrmk.com)

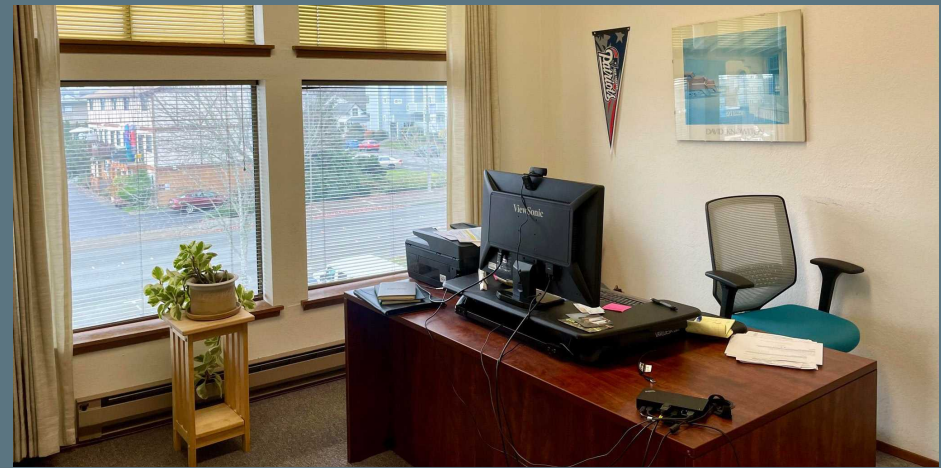
Ed Mao  
*Associate*  
310-694-7191  
[Edward.Mao@nrmk.com](mailto:Edward.Mao@nrmk.com)

# NEWMARK

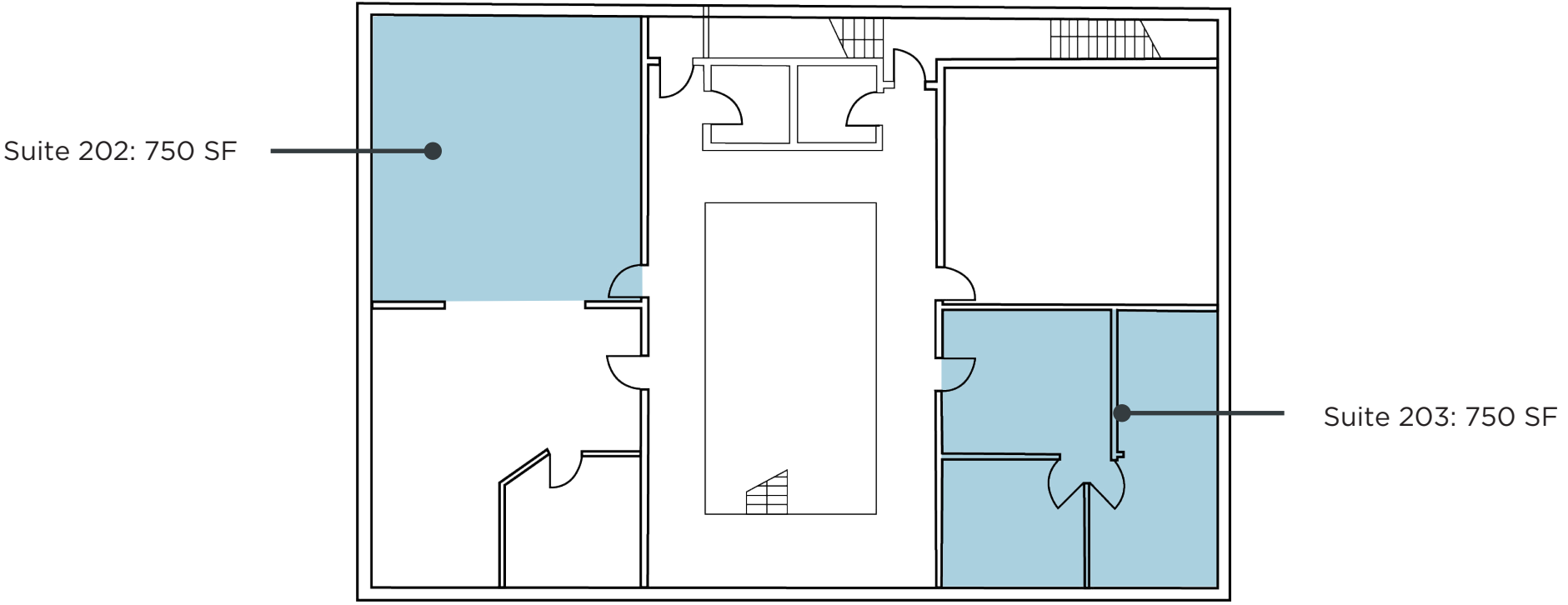


# PROPERTY HIGHLIGHTS

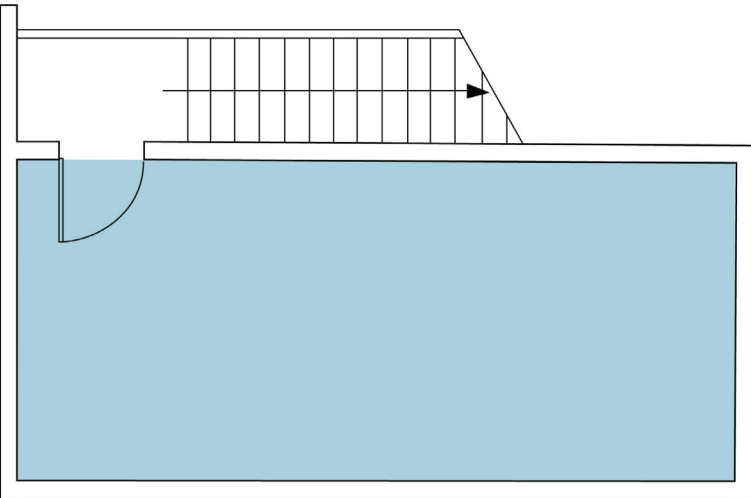
- Open Floor plans
- Abundant Parking | 3.06/1,000 SF
- Great views of the Puget Sound
- Blocks away from the waterfront in downtown Des Moines, off Marine View Drive
- Quick access to Pacific Highway, I-5 and Seattle-Tacoma International Airport
- 30 minutes from Seattle CBD and Bellevue CBD



# SECOND FLOOR | 750-1,500 SF



# THIRD FLOOR | 300 SF





# DES MOINES SQUARE

22014 7th Ave S | Des Moines

**Levi Bundrant**  
*Associate*  
**425-409-7405**  
**Levi.Bundrant@nmrk.com**

**Ed Mao**  
*Associate*  
**310-694-7191**  
**Edward.Mao@nmrk.com**

**NEWMARK**

The distributor of this communication is performing acts for which a real estate license is required. The information contained herein has been obtained from sources deemed reliable but has not been verified and no guarantee, warranty or representation, either express or implied, is made with respect to such information. Terms of sale or lease and availability are subject to change or withdrawal without notice. 18-1023