

WINDERMERE PLAZA



EXCLUSIVELY REPRESENTED BY **THE ANDOVER COMPANY**

MIKE HEMPHILL
(206) 550-4176
mhemphill@andoverco.com

JEFF CRANE
(206) 336-5336
jcrane@andoverco.com

JACK CRANE
(206) 258-3159
jacklc@andoverco.com

 **THE ANDOVER
COMPANY, INC.**
CORFAC INTERNATIONAL

OVERVIEW

Windermere Plaza is an outstanding 20,122 SF Class C office building to house your employees. Your company will find employee recruiting and retention strengthened at this prominent project in Kent East Hill.

- Main lobby offers a modern quality image.
- All spaces have large windows and lots of glass line that provides plenty of natural light that creates a more productive work environment.
- Plentiful free 4.5/1,000 SF parking ratio.
- Enjoy the pleasant quiet sounds of birds chirping on this gorgeous forested site.
- State-of-the-art telecommunication service through CenturyLink and Comcast Business Cable.
- Metro bus route comes within one block of the building along SE 240th and 132nd SE.
- Starbucks Cafe and QFC is next door, along with numerous restaurants and AnyTime Fitness.



13106 SE 240TH ST, KENT, WA 98031

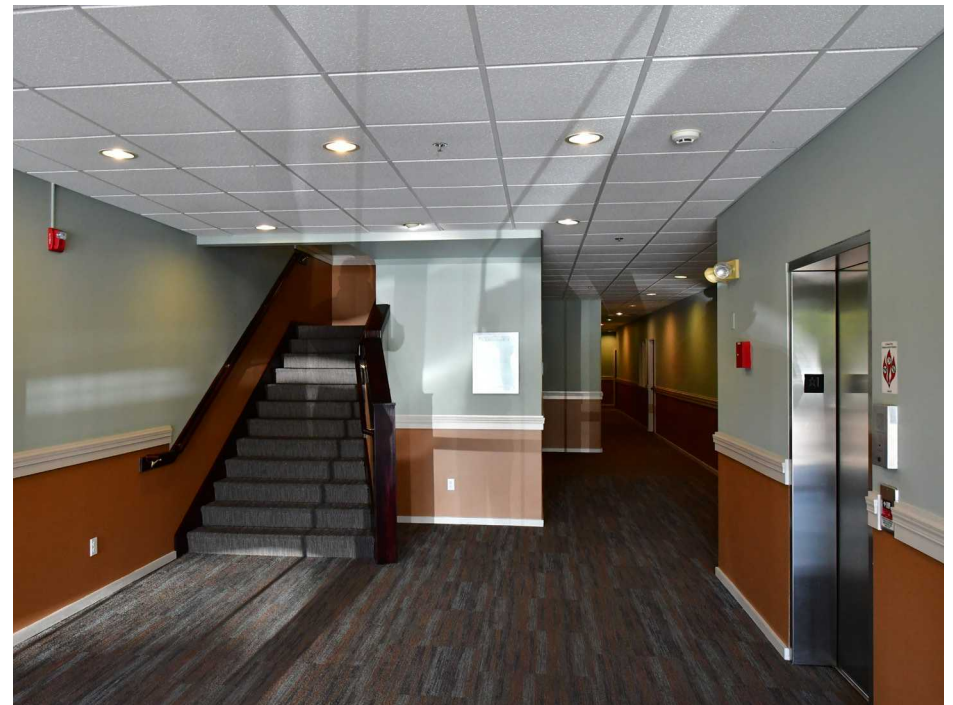


WINDERMERE PLAZA

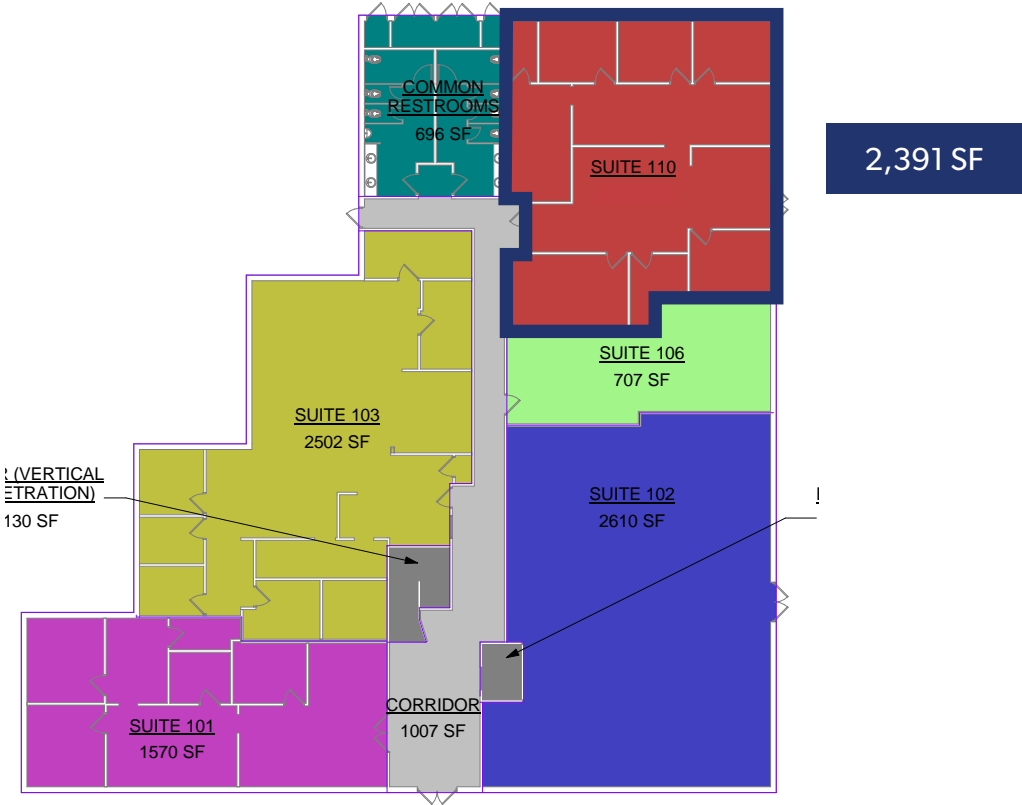
AVAILABLE SPACE

Windermere Plaza offers suites in a variety of sizes for lease. Please see below for currently available spaces.

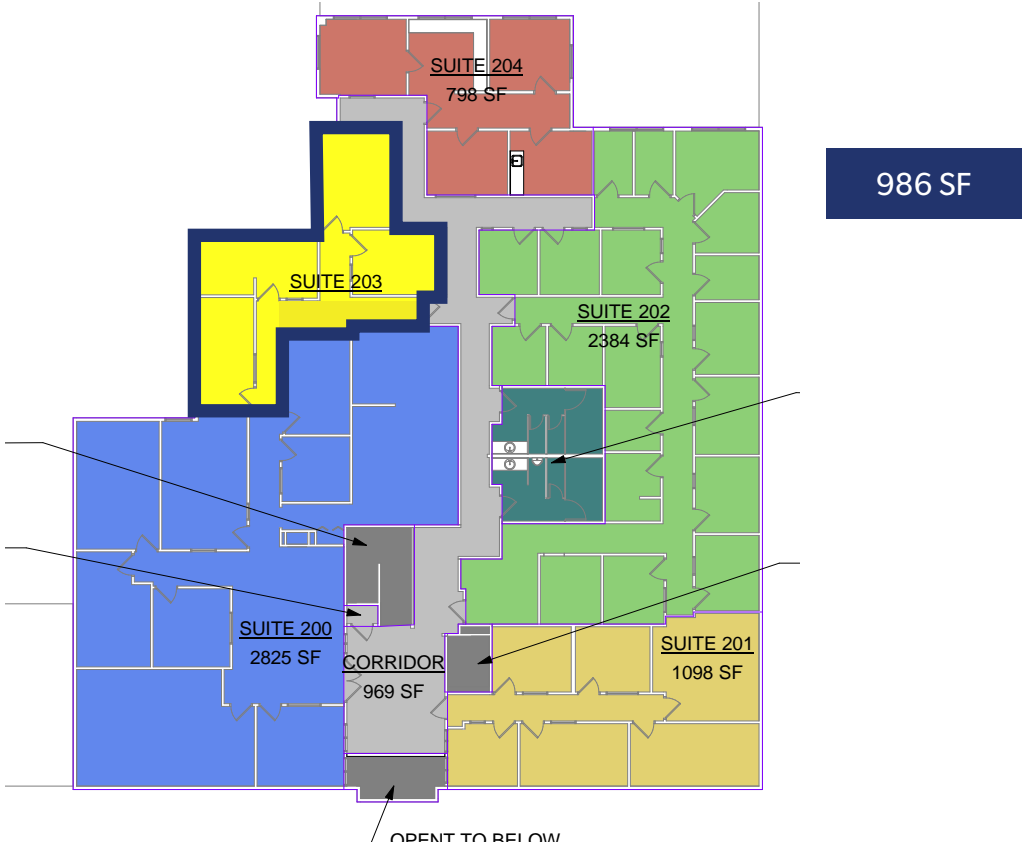
SUITE	RENTABLE SF	RENTAL RATE/RSF (NNN)	COMMENTS
110	2,391 SF	\$18.00 RSF/YR, NNN	Six (6) private offices, exterior entrance, conference room, lunch room and storage room
203	986	\$18.00 RSF/YR, NNN	Three (3) private offices and reception area



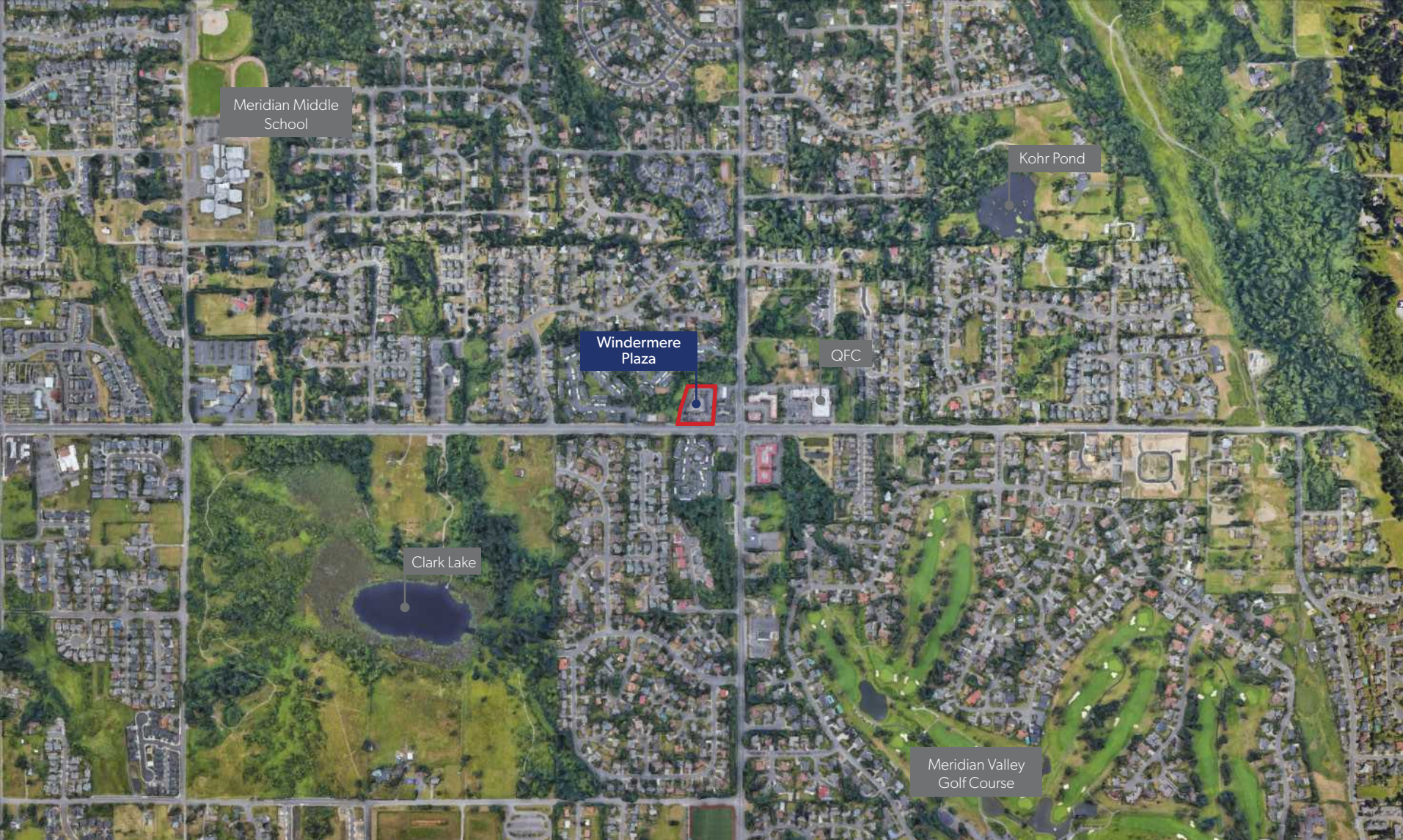
SUITE 110 FLOOR PLAN



SUITE 203 FLOOR PLAN



AREA AERIAL



BIRD'S EYE AERIAL





WINDERMERE PLAZA

EXCLUSIVELY REPRESENTED BY
THE ANDOVER COMPANY

MIKE HEMPHILL

(206) 550-4176

mhemphill@andoverco.com

JEFF CRANE

(206) 336-5336

jcrane@andoverco.com

JACK CRANE

(206) 258-3159

jacklc@andoverco.com



**THE ANDOVER
COMPANY, INC.**

CORFAC INTERNATIONAL