

Switcher's Landing

at Maple Valley!

 Fred Meyer



216 APARTMENTS
ON-SITE

MAPLE VALLEY BLACK DIAMOND RD SE



**FIRST
WESTERN
PROPERTIES**

SITE DETAILS



AVAILABLE

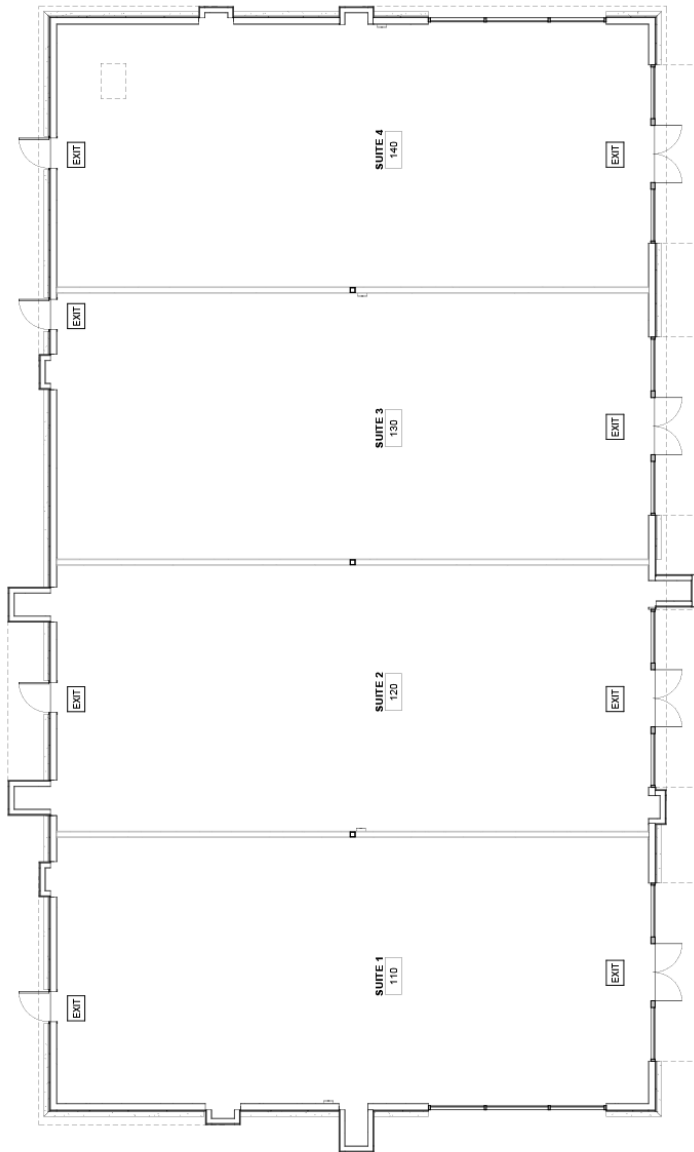
NOW PRE-LEASING UP TO 12,500 SF.
CONSTRUCTION TO BEGIN Q3 2024.

- LOCATED AT THE SE CORNER OF SR 516 & SR 19
- VISIBLE FROM MAPLE VALLEY BLACK DIAMOND ROAD N- 30,000 CPD
- DIRECT ACCESS ACROSS FROM TAHOMA HIGH SCHOOL SERVING 2,889 STUDENTS
- OVER 6,000 NEW HOME SITES WITHIN 5 MILES
- CURRENT TENANTS:

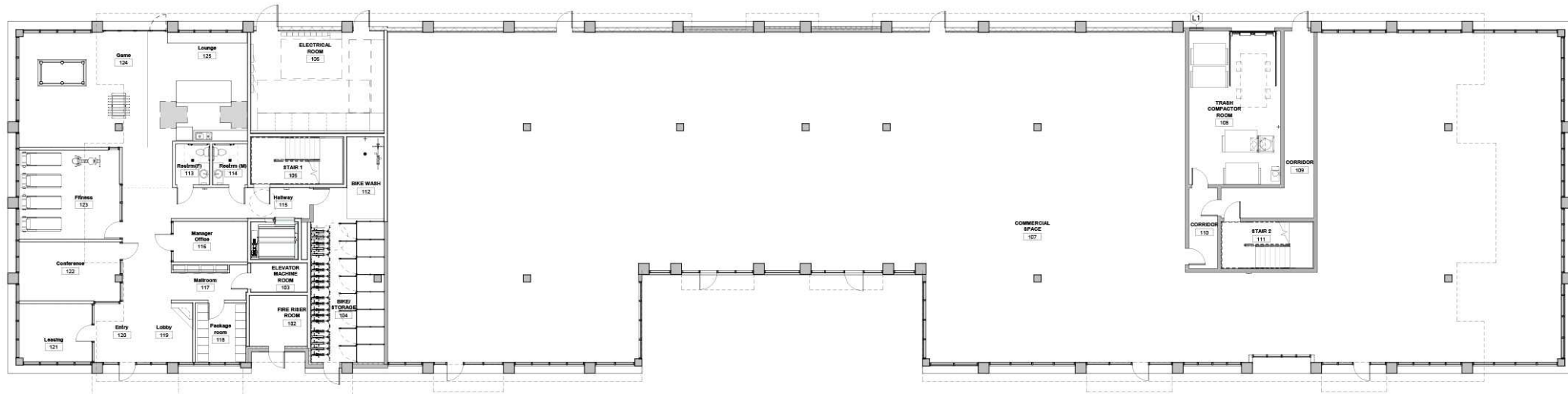


BUILDING A: 1,625 SF - 6,500 SF

MAPLE VALLEY BLACK DIAMOND ROAD - 30,000 CPD



BUILDING B: 2,500 SF - 12,500 SF



BUILDING B: 2,500 SF - 12,500 SF



LAKE WILDERNESS

ROCK CREEK ELEMENTARY

169

LOCATION DETAILS

CROCKETT'S
PUBLIC HOUSE

indigo
HEALTH

FOUR CORNER SQUARE

JOHNSON'S
Walgreens
MURPHY'S
SUPERCUTS
TACO DEL MAR
MOD
SUBWAY
RosaZone
ATI
PACIFIC DENTAL SERVICES
Orangetheory

MAPLE VALLEY TOWN SQUARE

Fred Meyer | Proliance Orthopedic Associates
MultiCare
Pizza Hut | Burger King | Bright Now! Dental | elements massage | Just Pore
Tarkenton's Pizza | UW Medicine | VALLEY MEDICAL CENTER

jiffylube

FOUR CORNERS VILLAGE

FOUR CORNER SHOPPING CENTER

MudBay | UPS
PAPA JOHN'S | T Mobile | McDonald's
Maple Valley Thai Cuisine | SHERWIN WILLIAMS | 9 ROUND 30 MIN KICKBOX FITNESS | Starbucks

STORAGE

Tires LES SCHWAB

MAPLE VALLEY COMMONS

Thrive community fitness | PIZZA
Pine & Tree | Little Gym

SWITCHER'S LANDING

SITE

516

516

169

TAHOMA HIGH SCHOOL

DESTINATION

Maple Valley is located about 30 minutes Southeast of Seattle and Northeast of Tacoma, equidistant from the water of Puget Sound and the landscapes of the Cascade Mountains.

Located east of Kent and Covington, and north of Black Diamond, Maple Valley offers an extraordinary location to enjoy all that our region has to offer.

Switcher's Landing



DEMOGRAPHICS

POPULATION

5 Min DT	7 Min DT	10 Min DT
15,751	27,189	38,675

AVERAGE HH INCOME

5 Min DT	7 Min DT	10 Min DT
\$188,277	\$173,643	\$170,694

4 YEAR + DEGREE

5 Min DT	7 Min DT	10 Min DT
47%	45.7%	44.8%



Switcher's Landing



JAMESON SULLIVAN **JOSH PARNELL**

253.471.5508
jsullivan@firstwesternproperties.com

253.284.3630
josh@firstwesternproperties.com

First Western Properties—Tacoma Inc. | 253.472.0404
6402 Tacoma Mall Blvd, Tacoma, WA 98409 | fwp-inc.com

© First Western Properties, Inc. DISCLAIMER: The above information has been secured from sources believed to be reliable, however, no representations are made to its accuracy. Prospective tenants or buyers should consult their professional advisors and conduct their own independent investigation. Properties are subject to change in price and/or availability without notice.