

Willows NW Business Park

14935-14963 NE 95TH STREET, REDMOND, WA 98052



Office/Warehouse spaces for lease

West Building

Suite 14935: 3,624 SF total

Office - 2,467 SF

Warehouse - 1,157 SF

Available June 1, 2024

\$2.40/SF/mo - office; \$1.40/SF/mo - warehouse

\$0.442/SF/mo - est. 2024 NNNs

East Building

Suite 14961: 2,353 SF total

Office - 1,238 SF

Warehouse - 1,115 SF

Available immediately

\$2.20/SF/mo - office; \$1.40/SF/mo - warehouse

\$0.442/SF/mo - est. 2024 NNNs



DEREK HEED
425 453 3133
Bellevue, WA
derek.heed@colliers.com

KENDRA MILLS
425 453 3135
Bellevue, WA
kendra.mills@colliers.com

COLLIERS INTERNATIONAL
11225 SE 6th Street, Suite 240
Bellevue, WA 98004
www.colliers.com

Willows NW Business Park

14935-14963 NE 95TH STREET, REDMOND, WA 98052



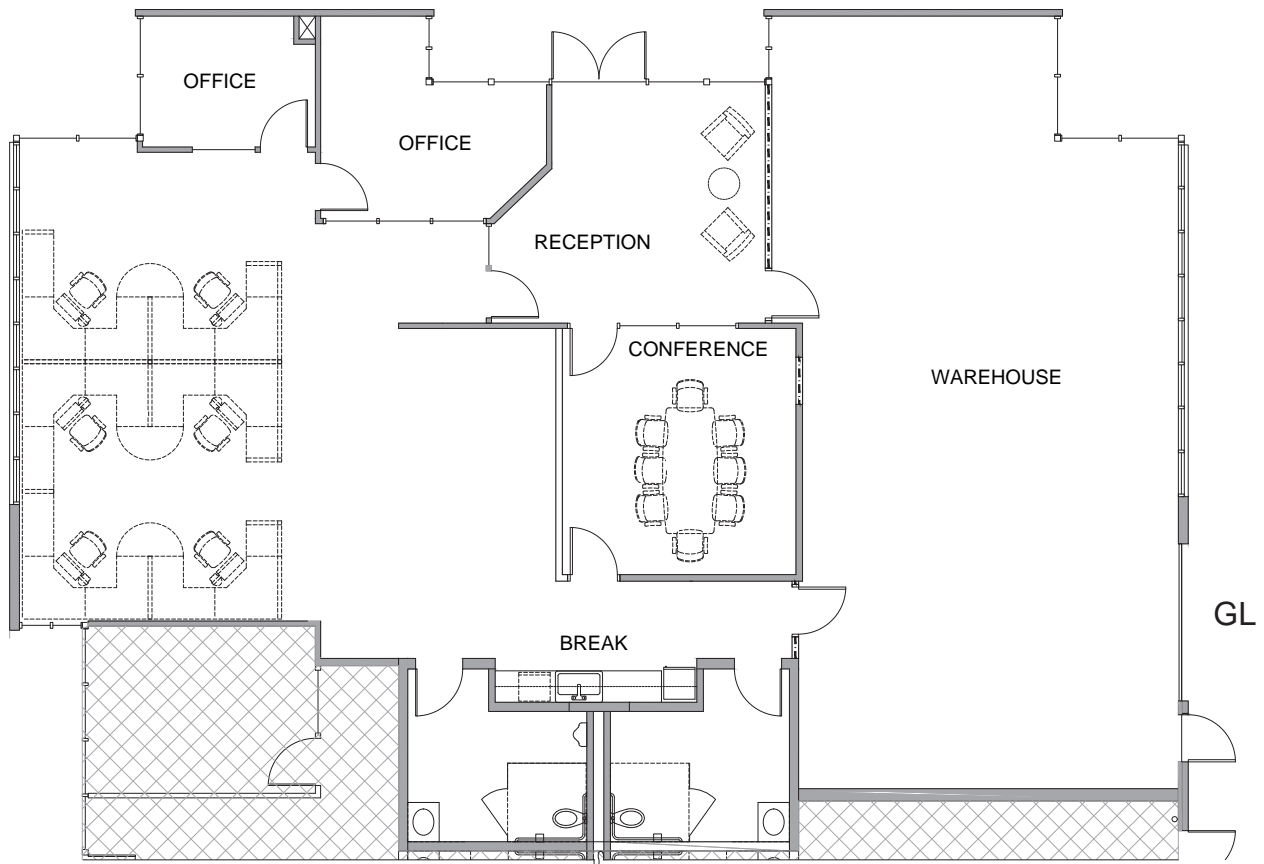
Suite 14935 - 3,624 SF

Office - 2,467 SF

- Two private offices
- Conference room
- Open work space
- Two in-suite restrooms
- Reception area
- Kitchenette

Warehouse - 1,157 SF

- One 10' x 10' grade-level door
- 13' clear height



DEREK HEED
425 453 3133
Bellevue, WA
derek.heed@colliers.com

KENDRA MILLS
425 453 3135
Bellevue, WA
kendra.mills@colliers.com

COLLIERS INTERNATIONAL
11225 SE 6th Street, Suite 240
Bellevue, WA 98004
www.colliers.com

Willows NW Business Park

14935-14963 NE 95TH STREET, REDMOND, WA 98052

Colliers

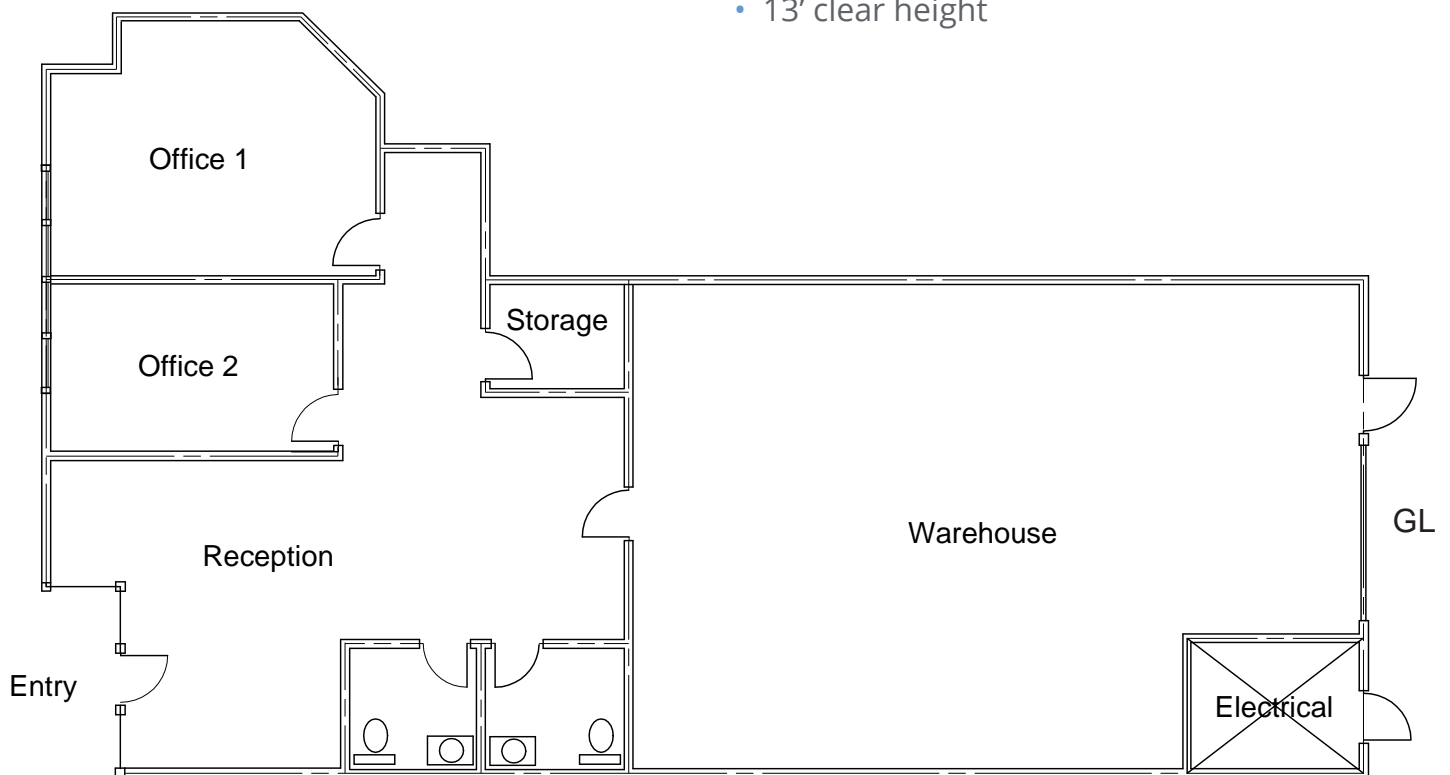
Suite 14961 - 2,353 SF

Office - 1,238 SF

- Two private offices
- Two in-suite restrooms
- Reception area

Warehouse - 1,115 SF

- One 10' x 10' grade- level door
- 13' clear height



Colliers International makes no guarantees, representations or warranties of any kind, expressed or implied, regarding the information including, but not limited to, warranties of content, accuracy and reliability. This publication is the copyrighted property of Colliers International and/or its licensor(s) © 2024 All rights reserved.

DEREK HEED
425 453 3133
Bellevue, WA
derek.heed@colliers.com

KENDRA MILLS
425 453 3135
Bellevue, WA
kendra.mills@colliers.com

COLLIERS INTERNATIONAL
11225 SE 6th Street, Suite 240
Bellevue, WA 98004
www.colliers.com