

Office Building For Lease

// EMPIRE STATE BUILDING

905 W. Riverside Ave, Spokane, WA 99201

[View Drone Footage!](#)



// PRESENTED BY:

ALICIA BARBIERI

VICE PRESIDENT

509.344.4902

ABARBIERI@G-B.COM



// PROPERTY SUMMARY



PROPERTY DESCRIPTION

The Empire State Building is a charming building with historical character located in the heart of Downtown Spokane. The property is directly across from the Federal Building and Post Office, and is only one block from RiverPark Square. This office building offers classic views of downtown and is within walking distance of Riverfront Park.

PROPERTY FEATURES

- Historic Building of Class and Character
- Janitorial Services Included
- Prime Downtown Location
- Building Conference Room
- Building Lounge/Break Room
- 24/7 Secured Access

SPACES	LEASE RATE	SPACE SIZE
Suite 101	\$2,700 per month	1,845 SF
Suite 204	\$640 per month	442 SF
Suite 302	\$712 per month	488 SF
Suite 503	\$400 per month	240 SF
Suite 510	\$3,550 per month	2,495 SF
Suite 612	\$1,020 per month	735 SF

DEMOGRAPHICS	1 MILE	3 MILES	5 MILES
Total Households	6,911	47,628	104,351
Total Population	12,789	108,742	241,950
Average HH Income	\$36,869	\$50,636	\$51,349

// PRESENTED BY:

ALICIA BARBIERI

VICE PRESIDENT

509.344.4902

ABARBIERI@G-B.COM



// ADDITIONAL PHOTOS



// PRESENTED BY:

ALICIA BARBIERI

VICE PRESIDENT

509.344.4902

ABARBIERI@G-B.COM



// ADDITIONAL PHOTOS



// PRESENTED BY:

ALICIA BARBIERI

VICE PRESIDENT

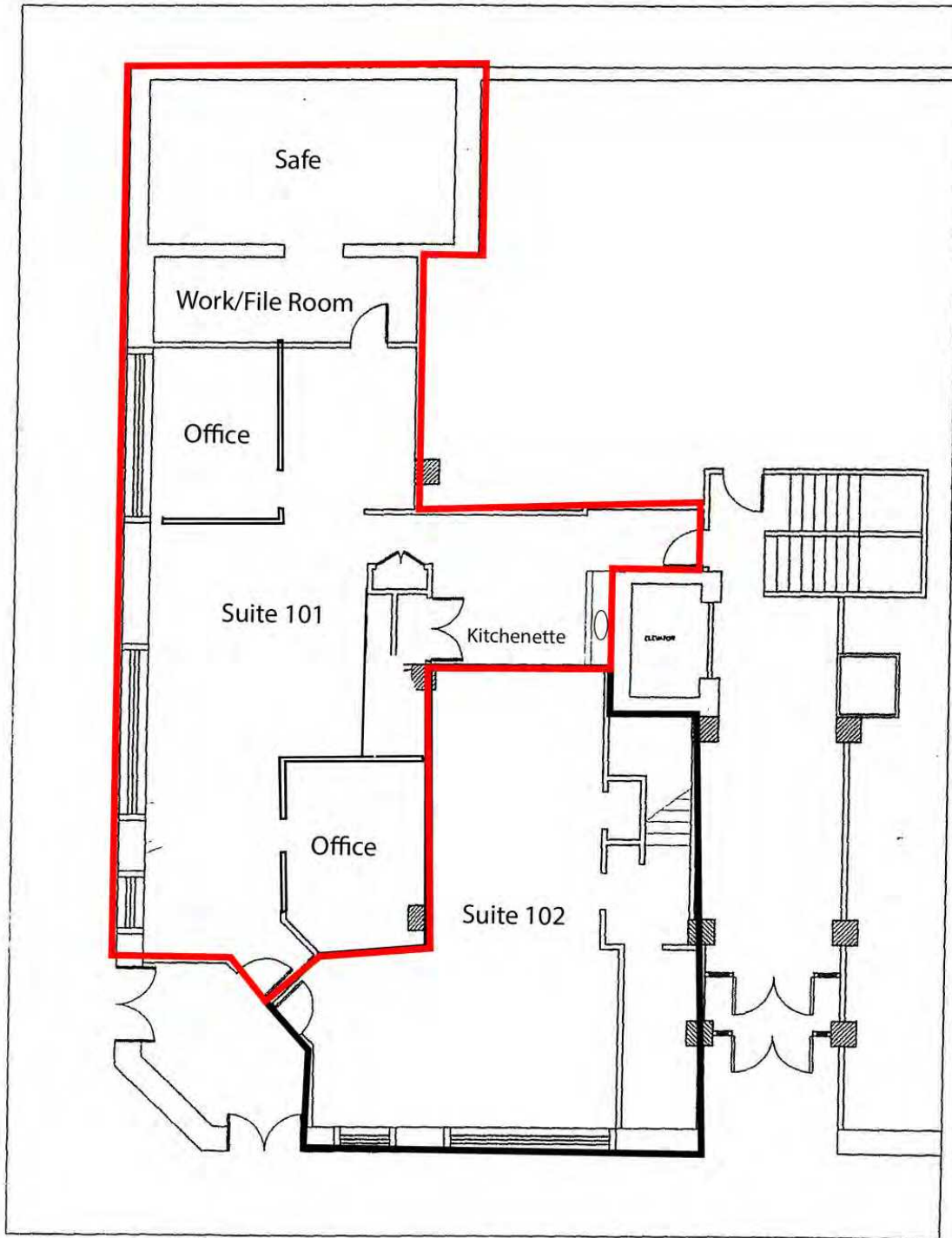
509.344.4902

ABARBIERI@G-B.COM



// FLOOR 1

Lincoln St.

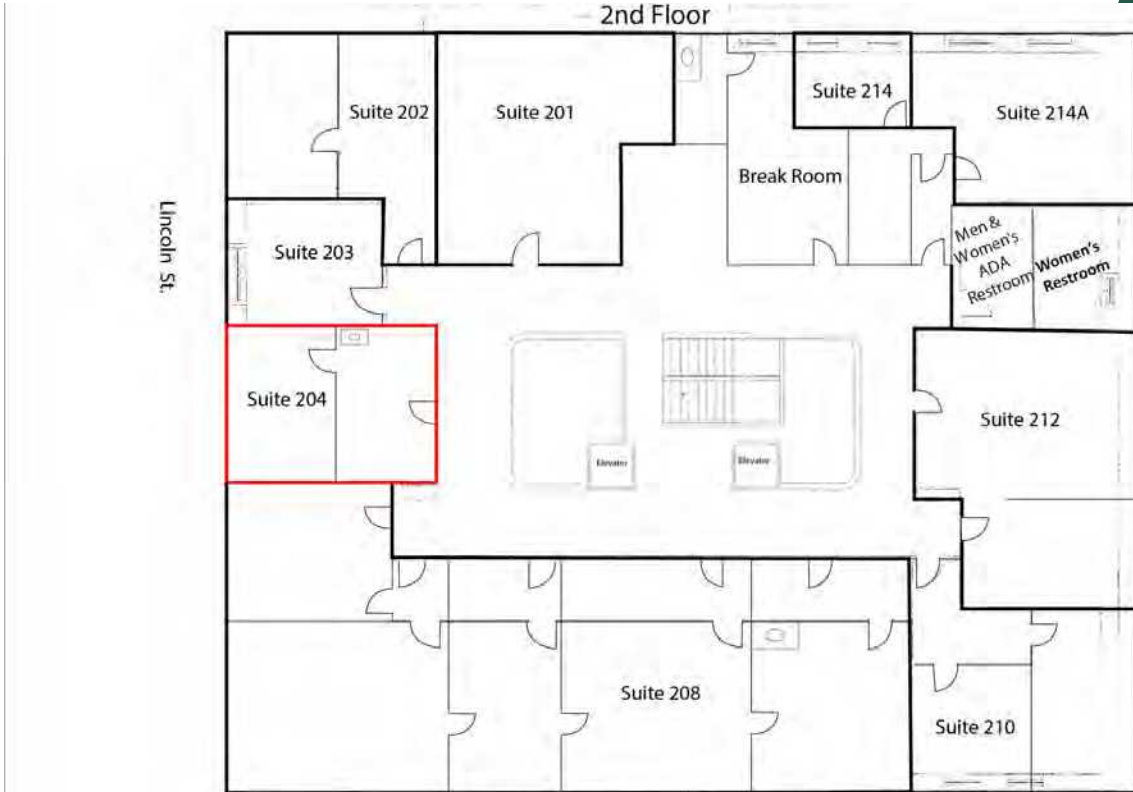


// PRESENTED BY:

ALICIA BARBIERI
VICE PRESIDENT
509.344.4902
ABARBIERI@G-B.COM



// FLOOR 2



// PRESENTED BY:

ALICIA BARBIERI

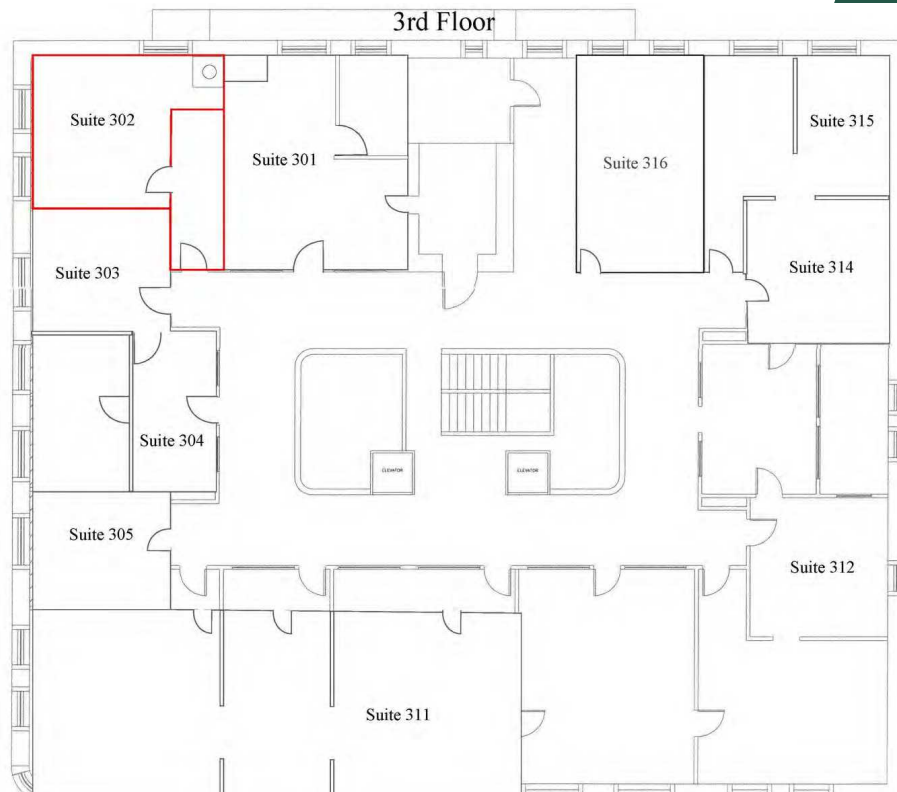
VICE PRESIDENT

509.344.4902

ABARBIERI@G-B.COM



// FLOOR 3



// PRESENTED BY:

ALICIA BARBIERI

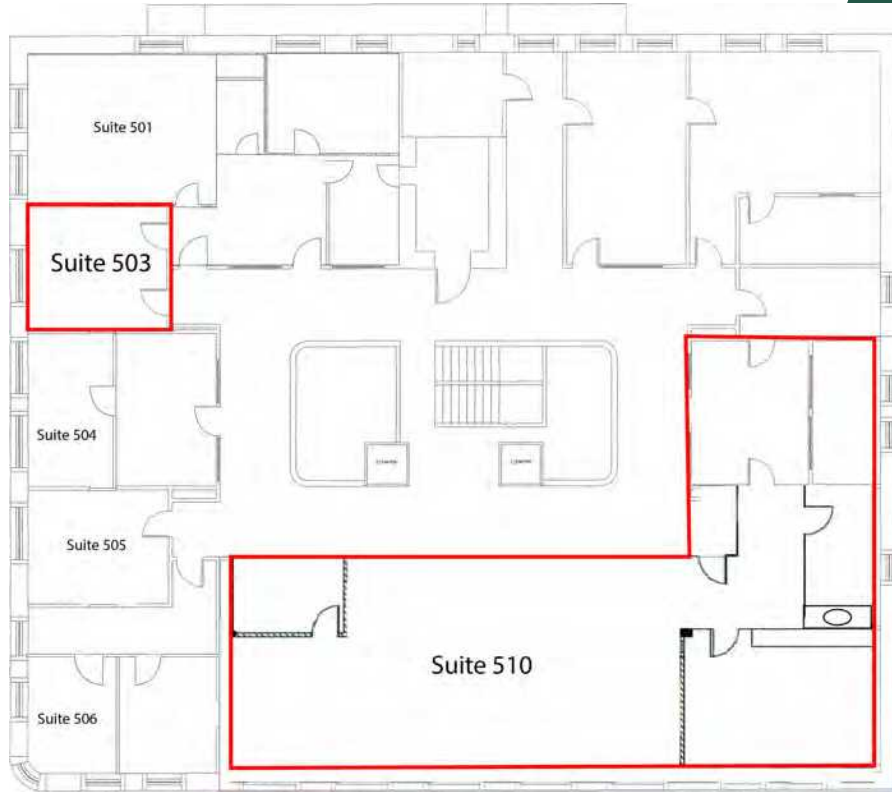
VICE PRESIDENT

509.344.4902

ABARBIERI@G-B.COM



// FLOOR 5



// PRESENTED BY:

ALICIA BARBIERI

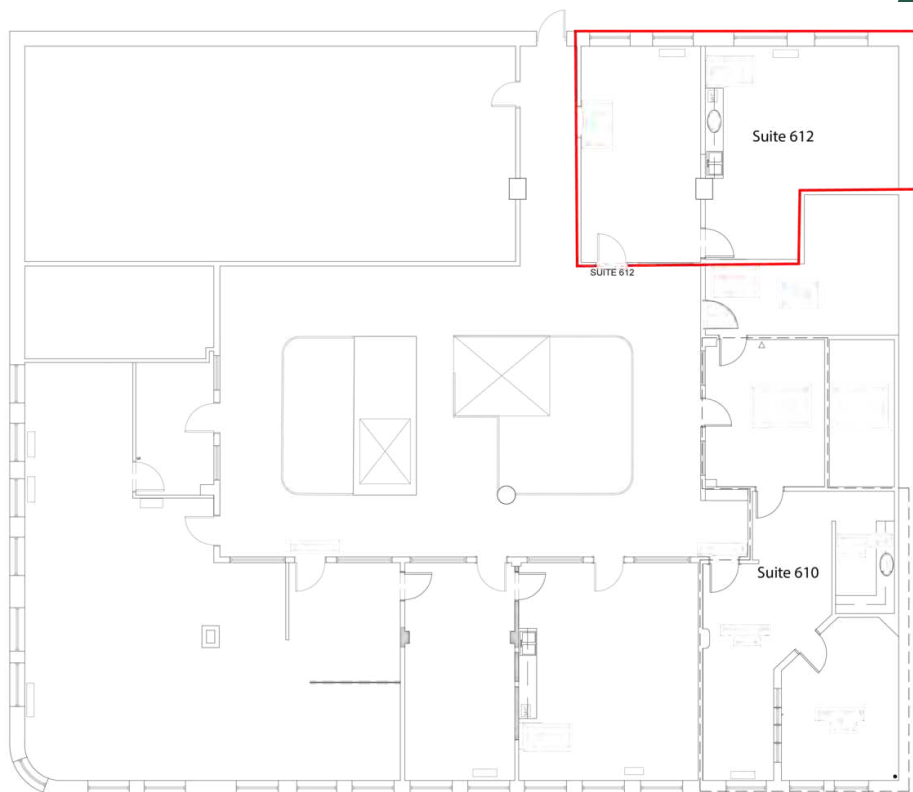
VICE PRESIDENT

509.344.4902

ABARBIERI@G-B.COM



// FLOOR 6



// PRESENTED BY:

ALICIA BARBIERI

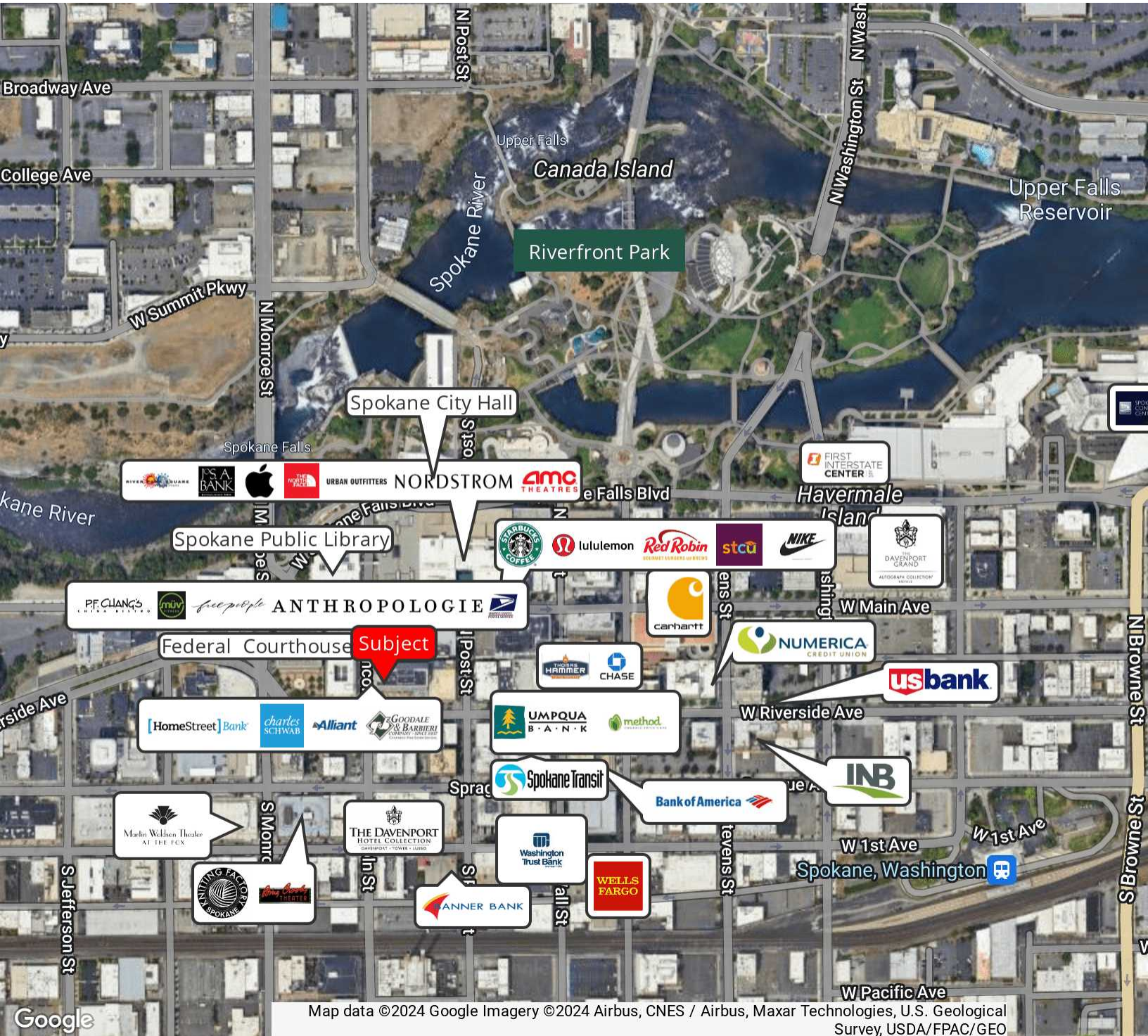
VICE PRESIDENT

509.344.4902

ABARBIERI@G-B.COM



// ESB RETAILER MAP



// PRESENTED BY:

ALICIA BARBIERI

VICE PRESIDENT

509.344.4902

ABARBIERI@G-B.COM

