

**FOR SUBLEASE** | BLDG. L, SUITE 105 & 6

# 19226 66TH AVE S

KENT, WASHINGTON

- Available : 2,770 SF
- Office : 1,220 SF
- Master Lease Expires : 5/31/2026
- Clear Height : 18'
- Loading : 2 Grade Level Doors
- Lease Rate : \$5,150/month, NNN



**NEWMARK**

**BLAKE BENTZ**  
Associate Director  
425.362.1391  
blake.bentz@nrmk.com

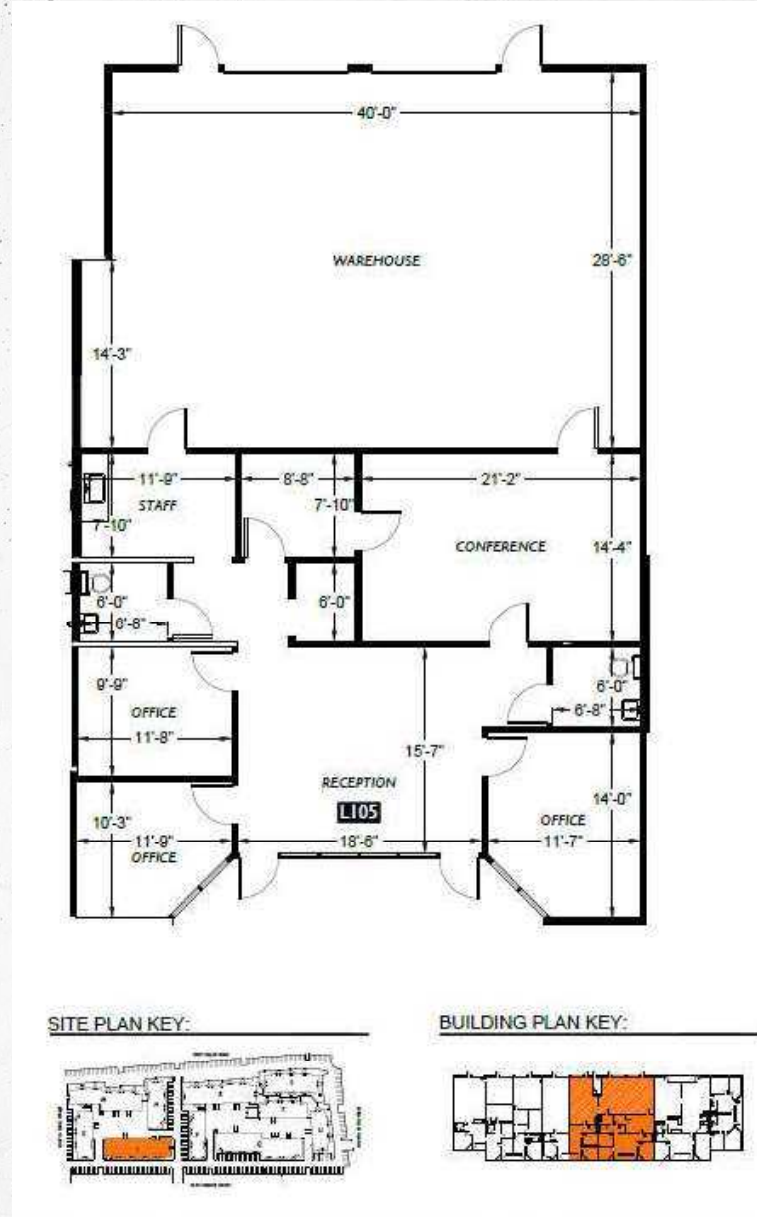
**JOSH SATTERLEE**  
Associate  
425.362.1396  
josh.satterlee@nrmk.com

FOR SUBLEASE | BLDG. L, SUITE 105 & 6

# 19226 66TH AVE S

KENT, WASHINGTON

## SITE PLAN

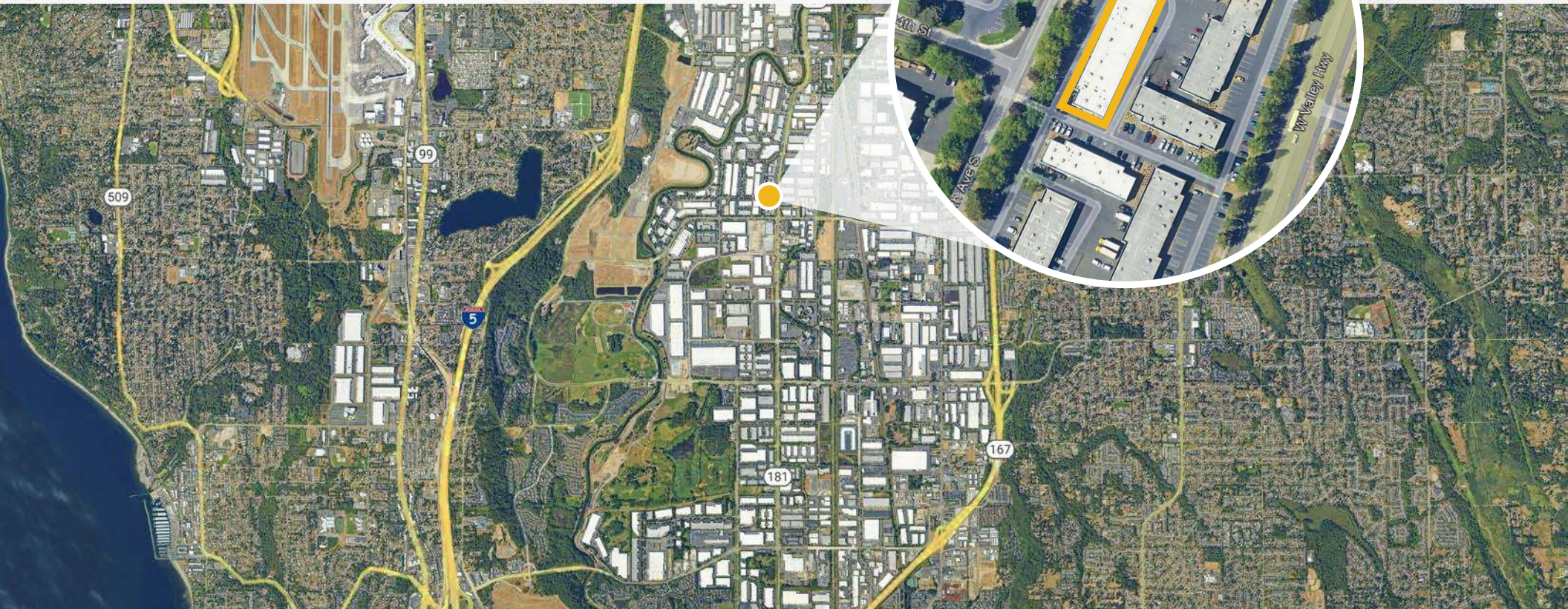


FOR SUBLEASE | BLDG. L, SUITE 105 & 6

# 19226 66TH AVE S

KENT, WASHINGTON

## PROPERTY LOCATION



**NEWMARK**

The information contained herein has been obtained from sources deemed reliable but has not been verified and no guarantee, warranty or representation, either express or implied, is made with respect to such information. Terms of sale or lease and availability are subject to change or withdrawal without notice.