

FOR LEASE



SKB

ORIGINAL RAINIER BREWERY

LEE & ASSOCIATES
COMMERCIAL REAL ESTATE SERVICES

5624-5790 AIRPORT WAY SOUTH | SEATTLE, WA

BOTTLING PLANT

SUITE 270 - 11,423 SF

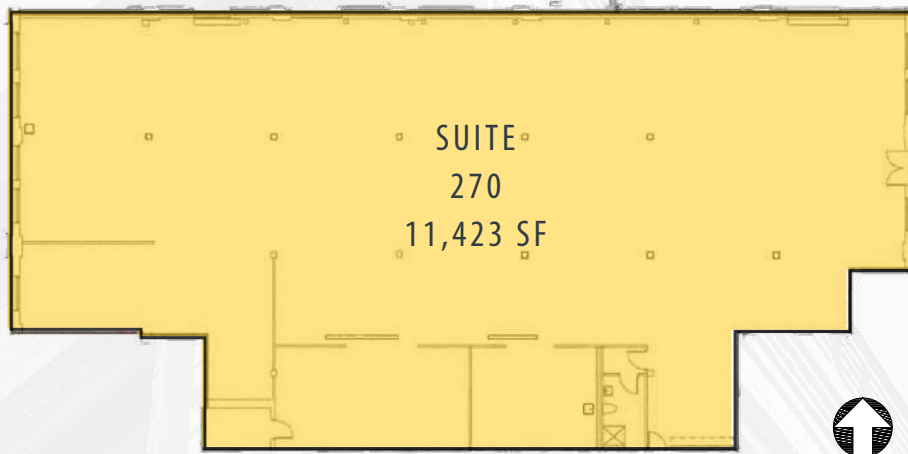
- ▶ Open space with unique hand-planed wood flooring
- ▶ Brick finish work, high ceilings and a kitchen/lunchroom
- ▶ Grade level access
- ▶ Perfect for an array of creative uses
- ▶ Potential manufacturing, museum, art classes or dance studios - bring all ideas!
- ▶ Access to I-5, highways 99 & 509
- ▶ Close proximity to bus and bike routes
- ▶ Adjacent to the building's new tenant amenity zone, kitchen, showers and restrooms

INDUSTRIAL, FLEX, RETAIL, OFFICE SPACE

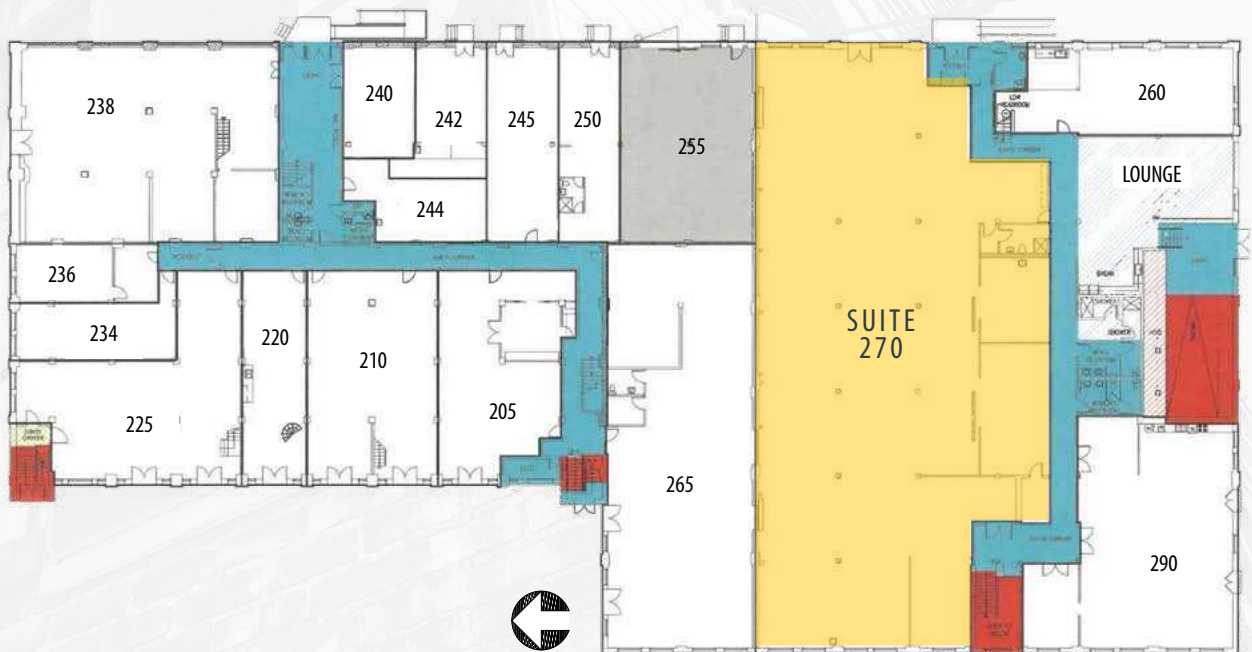




FLOOR PLAN



FLOOR TWO

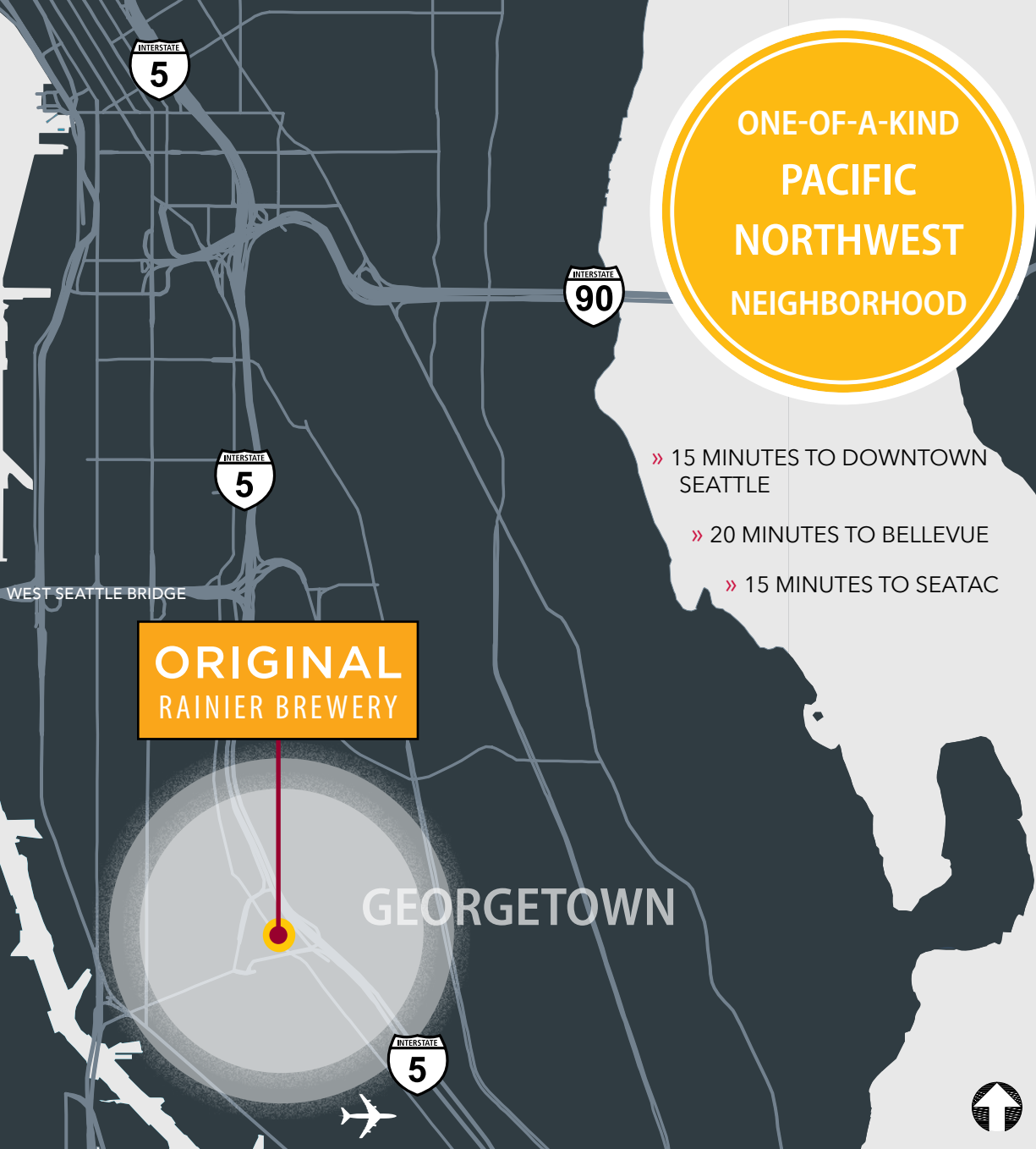


PHOTOS | RENDERINGS



LOCAL AMENITIES, EATERIES, & SHOPS

- JELLYFISH BREWING
- GREAT NOTION BREWING
- BROTHER JOE
- TINTE CELLARS
- THE BARN OWL
- BROTHER JOE
- FONDA LA CATRINA
- ELYSIAN TAPROOM
- THE CELLARS
- STAR BRASS
- BURB'S BURGERS
- FLYING SQUIRREL PIZZA
- GEORGETOWN BALLROOM



ONE-OF-A-KIND
PACIFIC
NORTHWEST
NEIGHBORHOOD

- » 15 MINUTES TO DOWNTOWN SEATTLE
- » 20 MINUTES TO BELLEVUE
- » 15 MINUTES TO SEATAC

ORIGINAL
RAINIER BREWERY

GEORGETOWN

LOCATION

As arguably the oldest neighborhood in Seattle, Georgetown has been creating history since the very beginning, but certainly “Georgetown” firmly established it’s presence on the map in the 1990’s and early 2000s with Industrial Coffee, Stellar Pizza and live music performances drawing crowds of folks from all over the city. Since that time, multiple bars, entertainment venues, a web design company, bakery, and even a circus school have established the community as a thriving cultural destination fostering its original character and history. Today Georgetown offers an abundance of breweries, eateries, shops, art and a growing work force. Located just ten minutes from downtown Seattle, and five minutes from King County Airport, Georgetown is definitely a destination hotspot.

SEAN DURKIN
SIOR, MSRE, CCIM, Principal
D 206.773.2682
O 425.830.2647
sdurkin@lee-associates.com

JOHN BRUSSA
Associate Vice President
D 206.773.2675
C 425.891.1424
jbrussa@lee-associates.com

AMANDA HAHNEMANN, CCIM
Senior Vice President
D 206.773.2691
C 206.852.1640
ahahnemann@lee-associates.com

