

INDUSTRIAL/OFFICE FOR LEASE

423 S Horton Street
Seattle, 98134



Rob Gasca

Cell: 425-766-3054
robgasca@mapleleafmgmt.com

Alex Ardiente

Cell: 425 273 3386
alex@mapleleafmgmt.com

Rob Gasca Real Estate Group
www.robgasca.com

DISCLAIMER: The information on the following pages has been secured from sources believed to be reliable, however, no representations are made to its accuracy. Prospective tenants or buyers should consult their professional advisors and conduct their own independent investigation. Properties are subject to change in price and/or availability without notice.

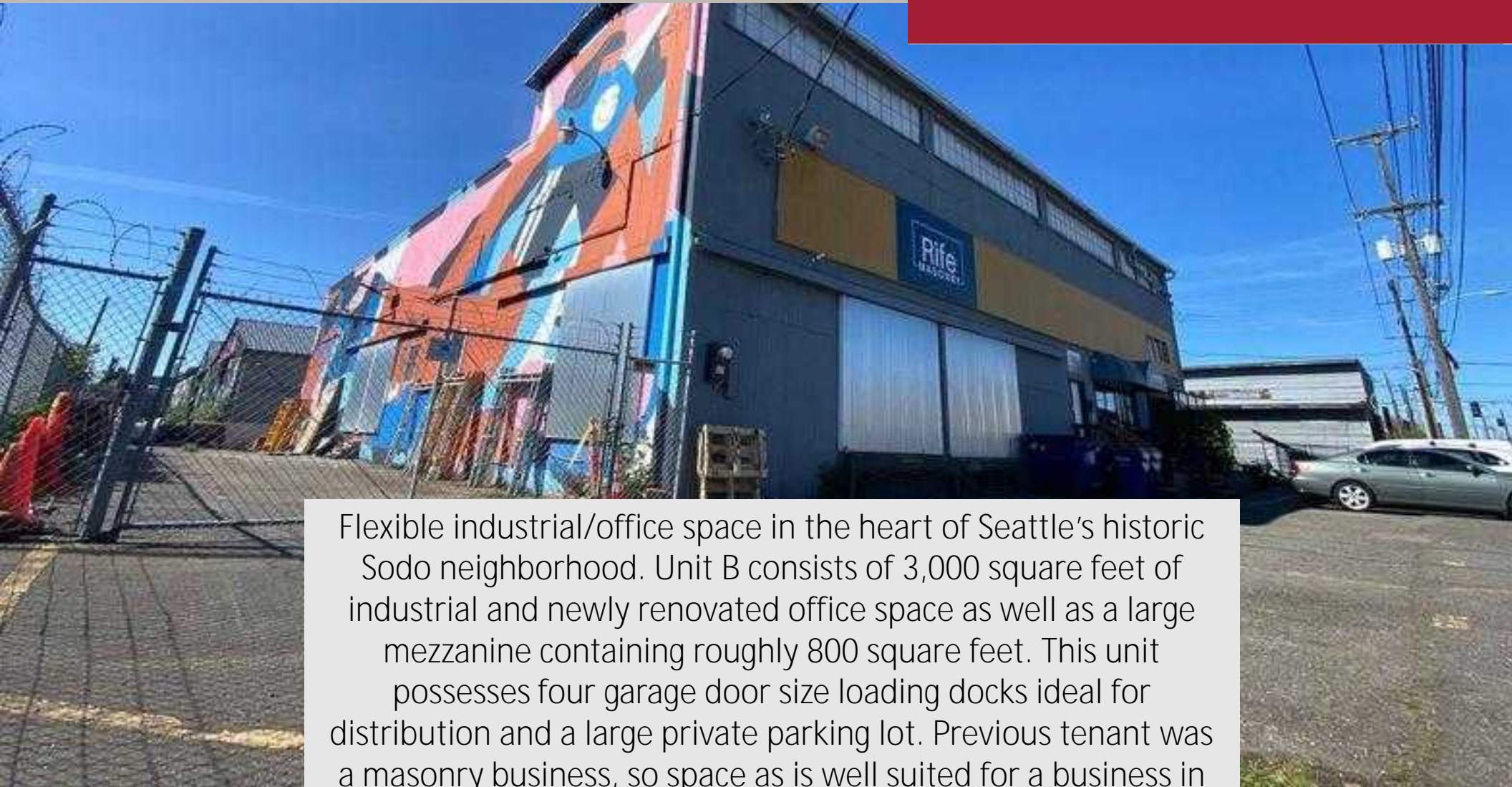
423 S Horton Street, Seattle 98134

Rob Gasca

Cell: 425-766-3054
robgasca@mapleleafmgt.com

Alex Ardiente

Cell: 425 273 3386
alex@mapleleafmgt.com



Flexible industrial/office space in the heart of Seattle's historic Sodo neighborhood. Unit B consists of 3,000 square feet of industrial and newly renovated office space as well as a large mezzanine containing roughly 800 square feet. This unit possesses four garage door size loading docks ideal for distribution and a large private parking lot. Previous tenant was a masonry business, so space as is well suited for a business in production, construction, distribution, storage and import/export.

423 S Horton Street, Seattle 98134

Rob Gasca

Cell: 425-766-3054
robgasca@mapleleafmgt.com

Alex Ardiente

Cell: 425 273 3386
alex@mapleleafmgt.com



Industrial Space

INDUSTRIAL/OFFICE FOR LEASE

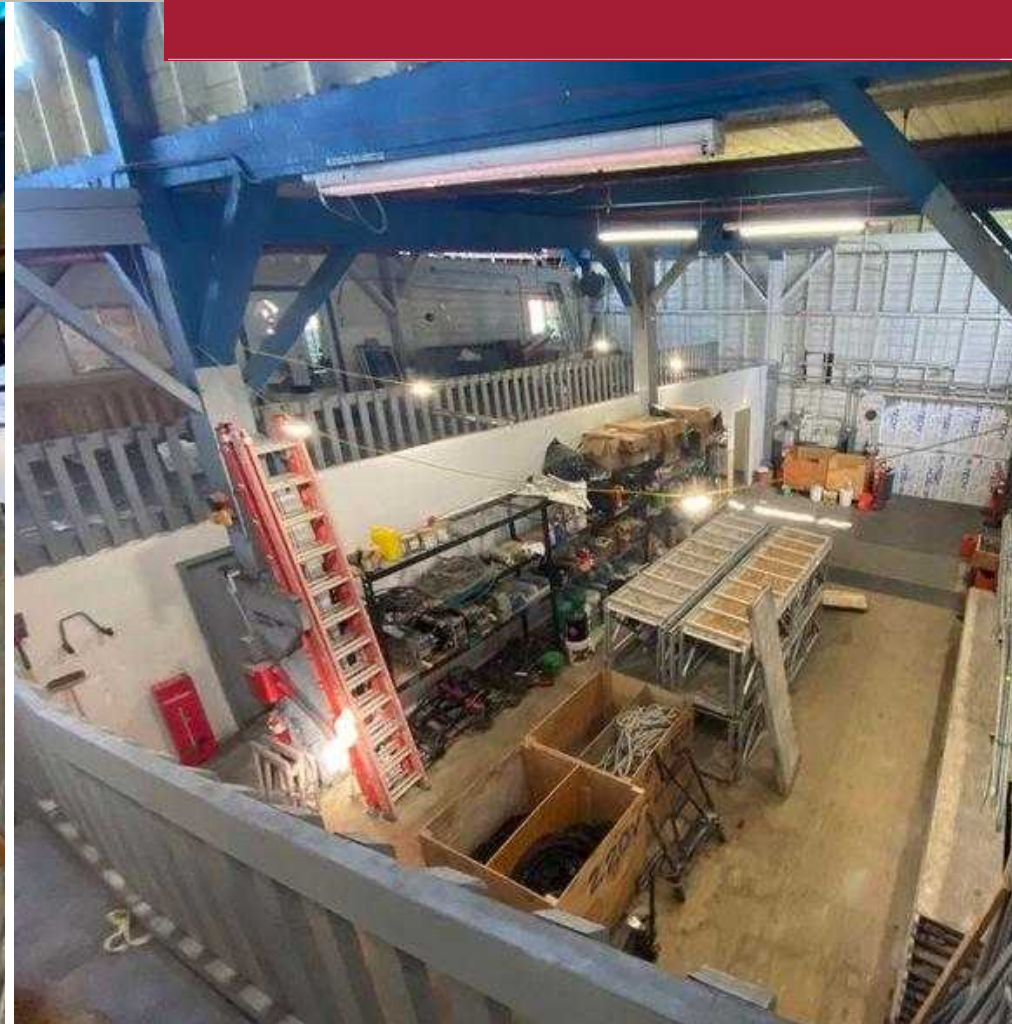
423 S Horton Street, Seattle 98134

Rob Gasca

Cell: 425-766-3054
robgasca@mapleleafmgt.com

Alex Ardiente

Cell: 425 273 3386
alex@mapleleafmgt.com



Industrial Space



Rob Gasca Real Estate Group
8809 Roosevelt Way NE, Seattle, WA 98115
(206) 250-7367

www.robgasca.com

INDUSTRIAL/OFFICE FOR LEASE

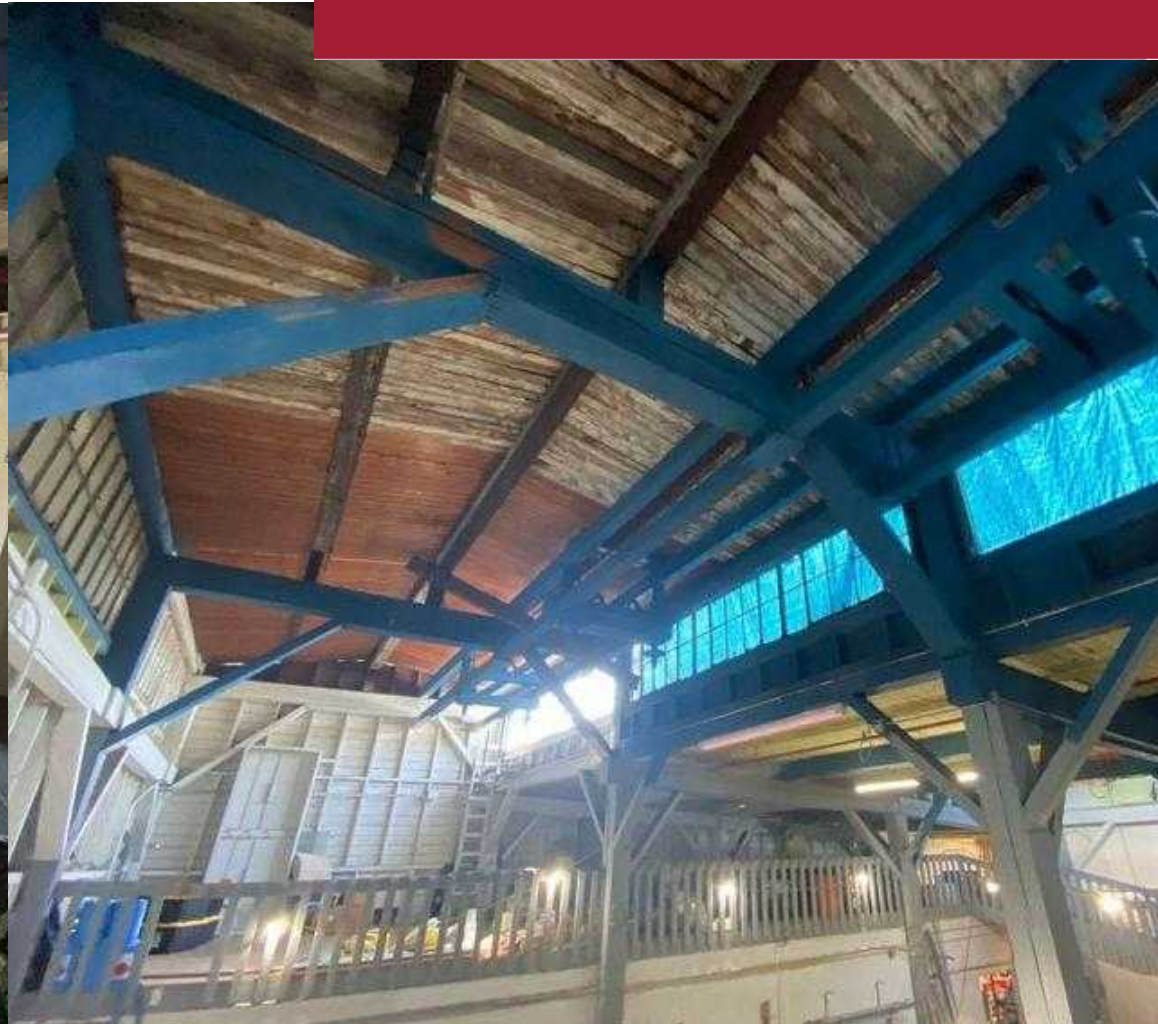
423 S Horton Street, Seattle 98134

Rob Gasca

Cell: 425-766-3054
robgasca@mapleleafmgt.com

Alex Ardiente

Cell: 425 273 3386
alex@mapleleafmgt.com



Mezzanine



Rob Gasca Real Estate Group
8809 Roosevelt Way NE, Seattle, WA 98115
(206) 250-7367

www.robgasca.com

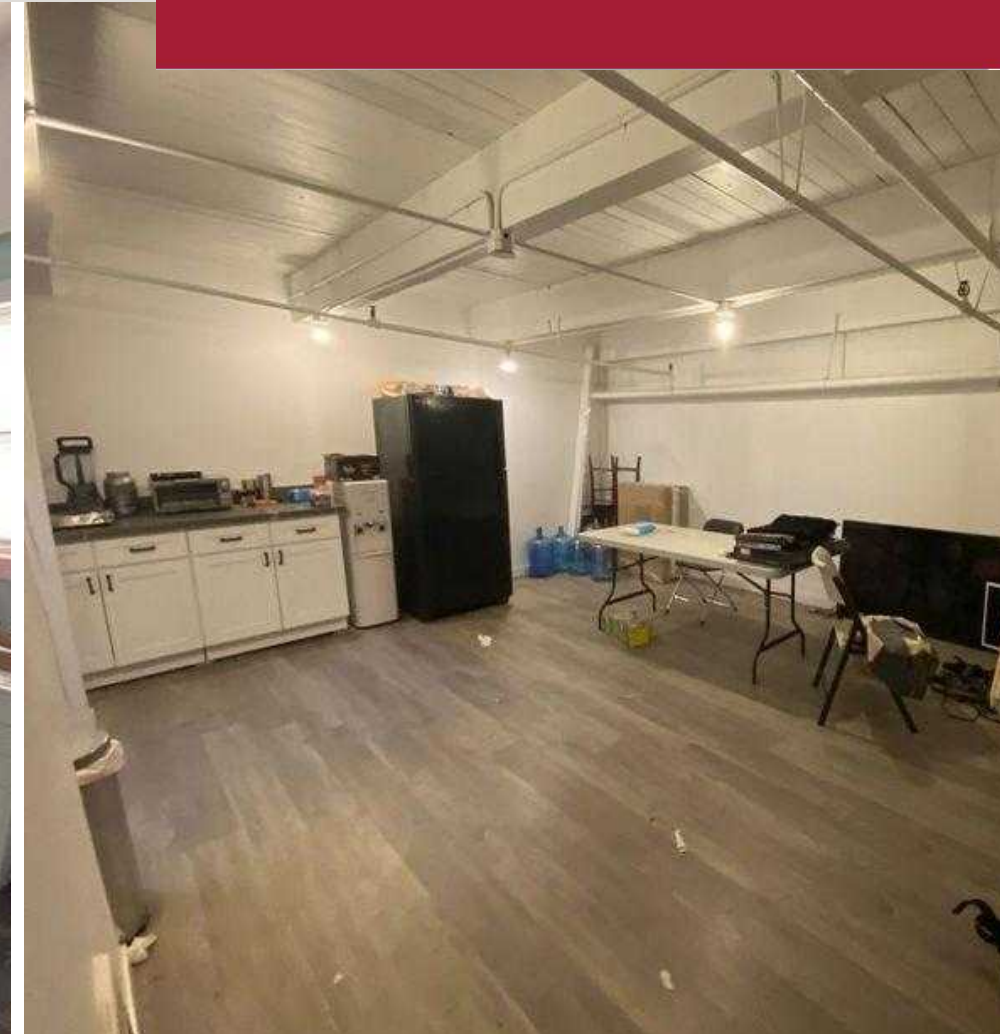
423 S Horton Street, Seattle 98134

Rob Gasca

Cell: 425-766-3054
robgasca@mapleleafmgt.com

Alex Ardiente

Cell: 425 273 3386
alex@mapleleafmgt.com



Office Space

423 S Horton Street, Seattle 98134

Rob Gasca

Cell: 425-766-3054
robgasca@mapleleafmgmt.com

Alex Ardiente

Cell: 425 273 3386
alex@mapleleafmgmt.com



Premises

423 S Horton Street, Seattle 98134

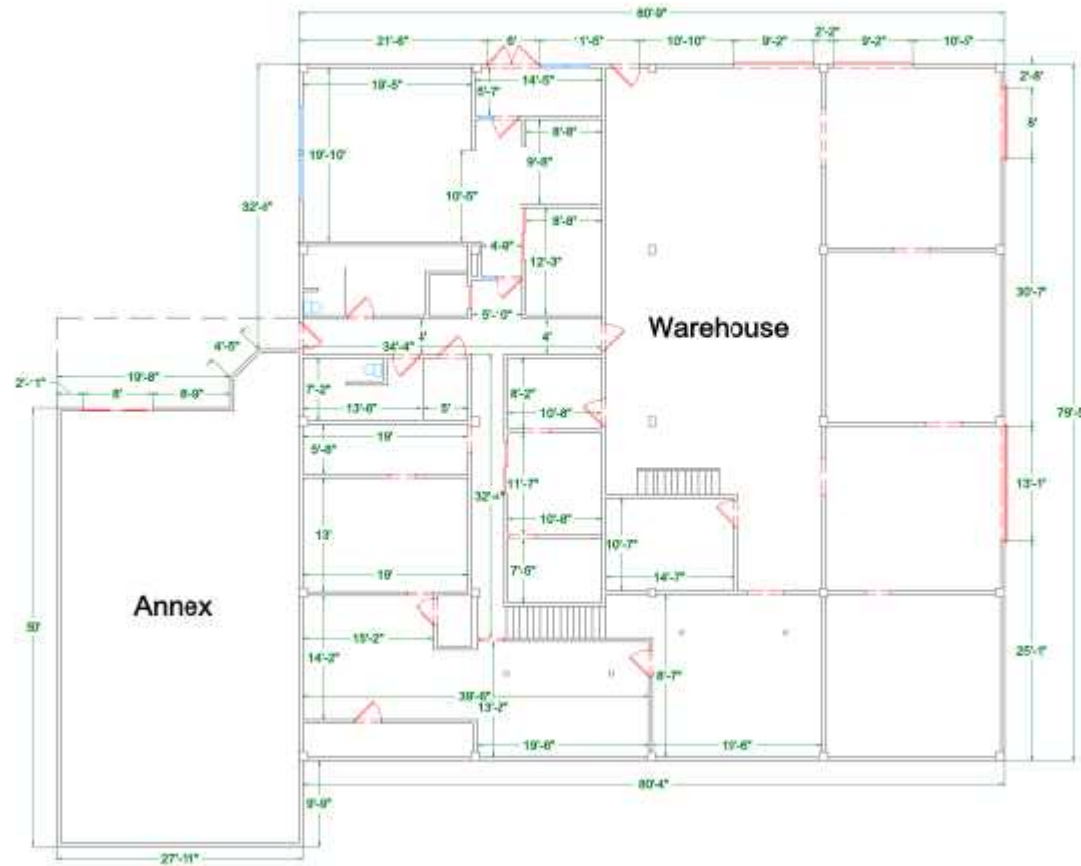
Rob Gasca

Cell: 425-766-3054
robgasca@mapleleafmgt.com

Alex Ardiente

Cell: 425 273 3386
alex@mapleleafmgt.com

First Floor



Floorplan



Rob Gasca Real Estate Group
8809 Roosevelt Way NE, Seattle, WA 98115
(206) 250-7367

www.robgasca.com

423 S Horton Street, Seattle 98134

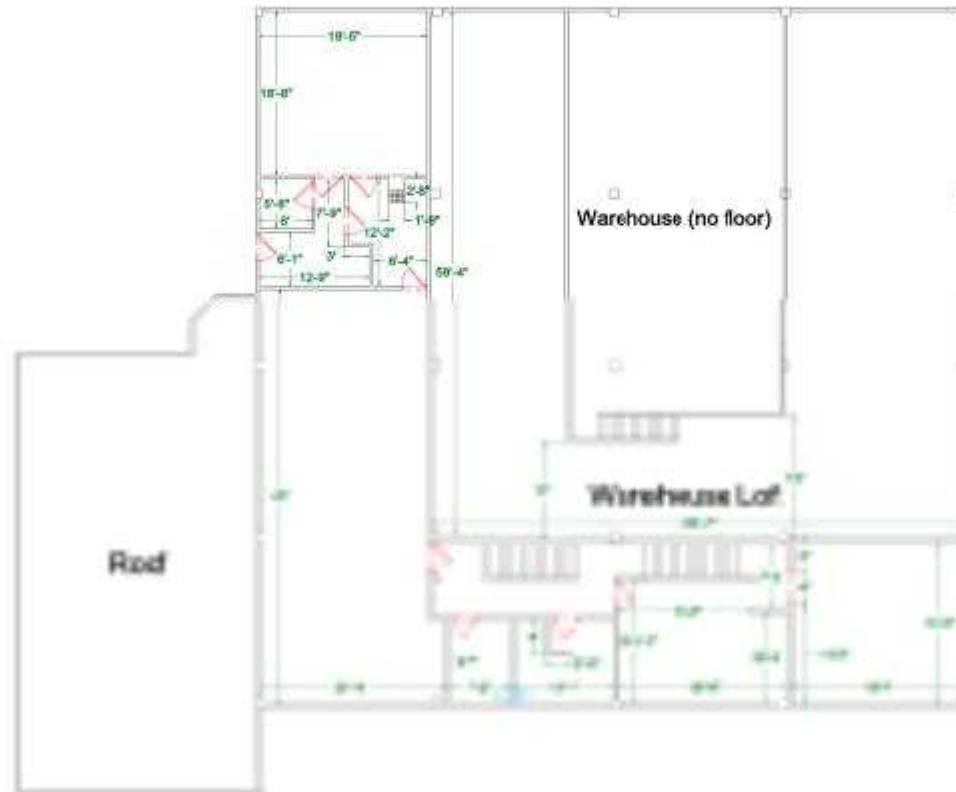
Rob Gasca

Cell: 425-766-3054
robgasca@mapleleafmgt.com

Alex Ardiente

Cell: 425 273 3386
alex@mapleleafmgt.com

Second Floor



Floorplan

423 S Horton Street, Seattle 98134

Rob Gasca

Cell: 425-766-3054
robgasca@mapleleafmgt.com

Alex Ardiente

Cell: 425 273 3386
alex@mapleleafmgt.com



Suite	SF	\$/PSF	Estimated NNN
B	3,800	\$18	\$5