

BULLITT CENTER

1501 E MADISON STREET | SEATTLE, WA 98122

TONY FORD

Senior Vice President
+1 206 292 6014
tony.ford@cbre.com

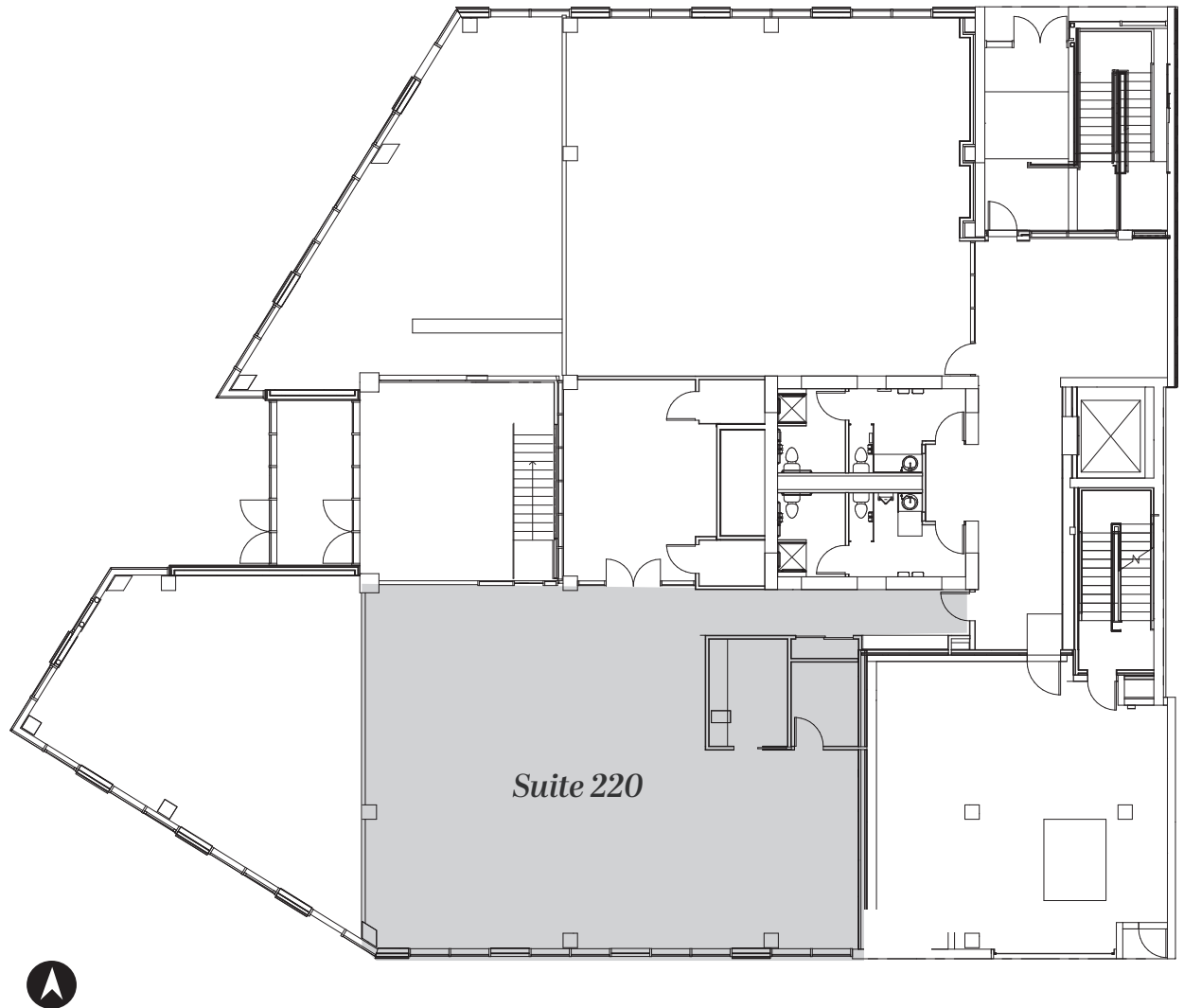
SEAN SUSSEX

First Vice President
+1 206 931 8411
sean.sussex@cbre.com

© 2023 CBRE, Inc. All rights reserved. This information has been obtained from sources believed reliable, but has not been verified for accuracy or completeness. You should conduct a careful, independent investigation of the property and verify all information. Any reliance on this information is solely at your own risk. CBRE and the CBRE logo are service marks of CBRE, Inc. All other marks displayed on this document are the property of their respective owners, and the use of such logos does not imply any affiliation with or endorsement of CBRE. Photos herein are the property of their respective owners. Use of these images without the express written consent of the owner is prohibited. 04.01.2024 AL

CBRE

Suite 220
3,044 SF



BULLITT CENTER

1501 E MADISON STREET | SEATTLE, WA 98122

TONY FORD

Senior Vice President
+1 206 292 6014
tony.ford@cbre.com

SEAN SUSSEX

First Vice President
+1 206 931 8411
sean.sussex@cbre.com

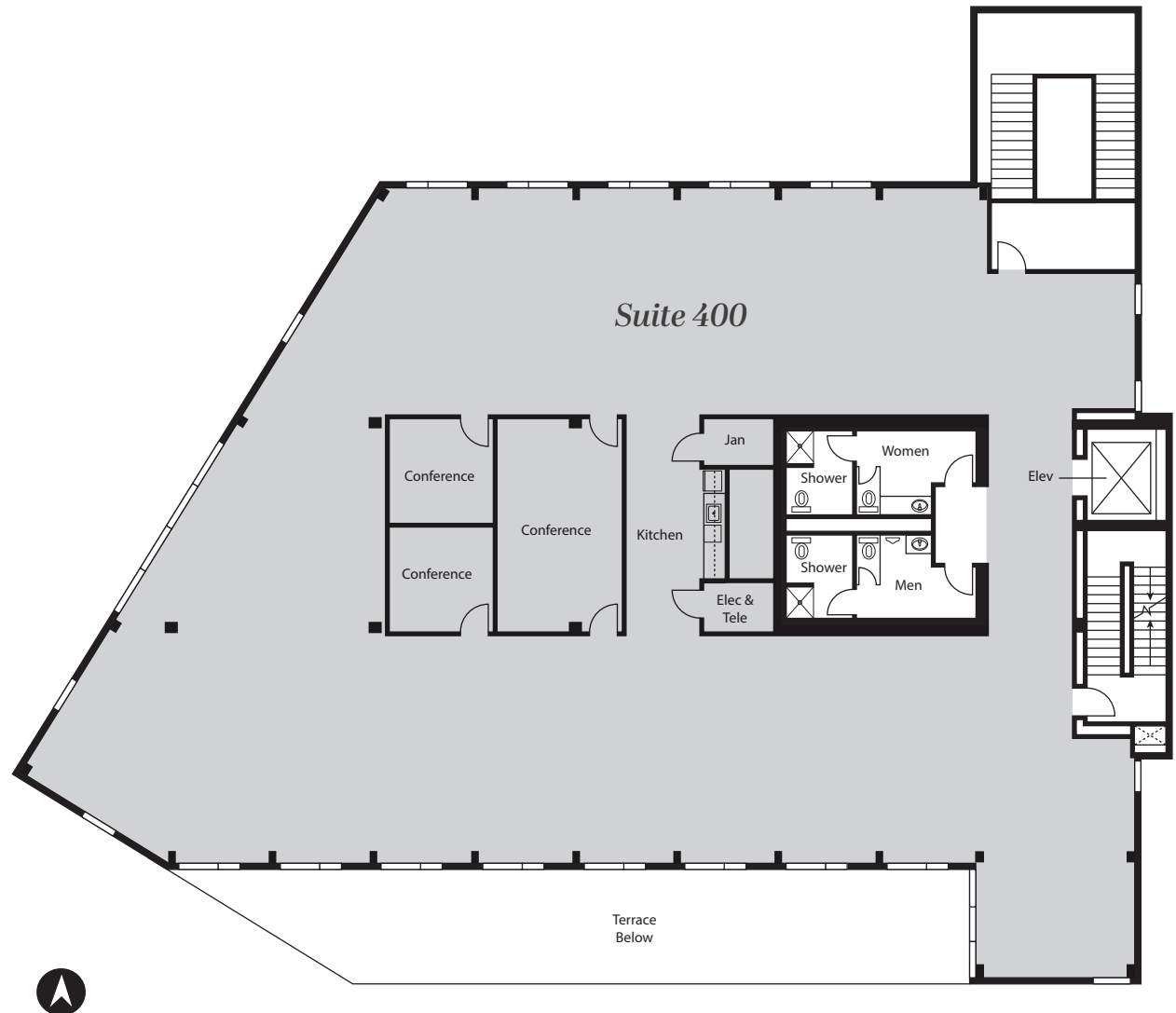
© 2023 CBRE, Inc. All rights reserved. This information has been obtained from sources believed reliable, but has not been verified for accuracy or completeness. You should conduct a careful, independent investigation of the property and verify all information. Any reliance on this information is solely at your own risk. CBRE and the CBRE logo are service marks of CBRE, Inc. All other marks displayed on this document are the property of their respective owners, and the use of such logos does not imply any affiliation with or endorsement of CBRE. Photos herein are the property of their respective owners. Use of these images without the express written consent of the owner is prohibited. 04.01.2024 AL

CBRE



*Click to view
the virtual tour*

Suite 400
7,948 SF



BULLITT CENTER

1501 E MADISON STREET | SEATTLE, WA 98122

TONY FORD

Senior Vice President
+1 206 292 6014
tony.ford@cbre.com

SEAN SUSSEX

First Vice President
+1 206 931 8411
sean.sussex@cbre.com

© 2023 CBRE, Inc. All rights reserved. This information has been obtained from sources believed reliable, but has not been verified for accuracy or completeness. You should conduct a careful, independent investigation of the property and verify all information. Any reliance on this information is solely at your own risk. CBRE and the CBRE logo are service marks of CBRE, Inc. All other marks displayed on this document are the property of their respective owners, and the use of such logos does not imply any affiliation with or endorsement of CBRE. Photos herein are the property of their respective owners. Use of these images without the express written consent of the owner is prohibited. 04.01.2024 AL

CBRE



*Click to view
the virtual tour*

Suite 500
7,984 SF

