

THE INTERURBAN BUILDING

157 Yesler Way, Seattle, WA 98104

Colliers

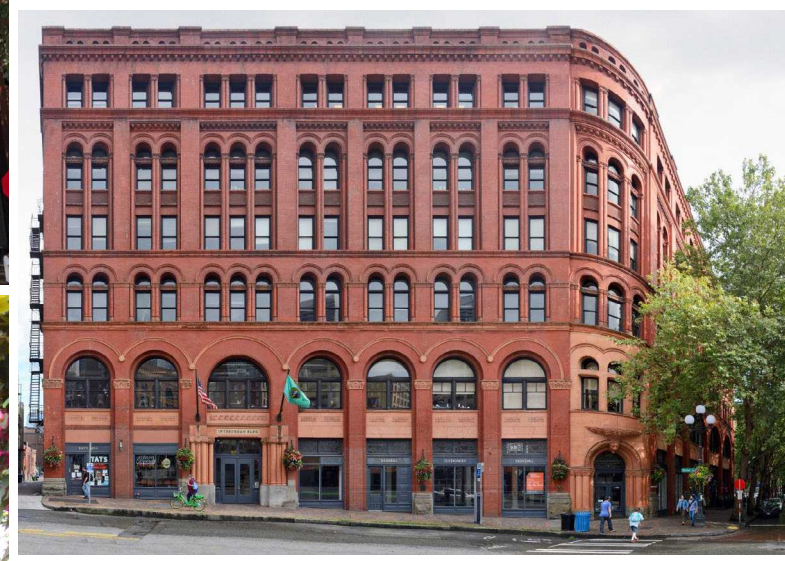
THE INTERURBAN BUILDING

157 Yesler Way, Seattle, WA 98104

Building Features

- 9 Views of downtown, Elliott Bay, and the Cascade Mountains
- 9 Exposed ceilings
- 9 Abundant natural light
- 9 On-site restaurants include Nirmal's, Tat's Delicatessen, and Pizza Pro
- 9 Close proximity to I-5, Hwy 99, stadiums, light rail, and the ferry dock
- 9 On-site parking garage: 13 stalls available at \$225.00/stall/month

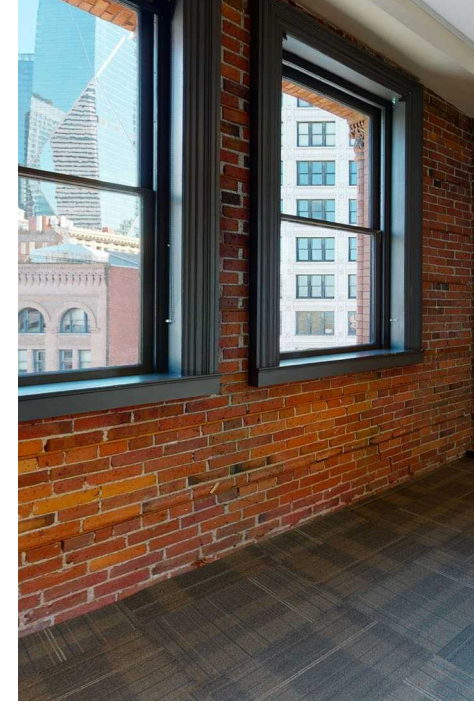
Colliers



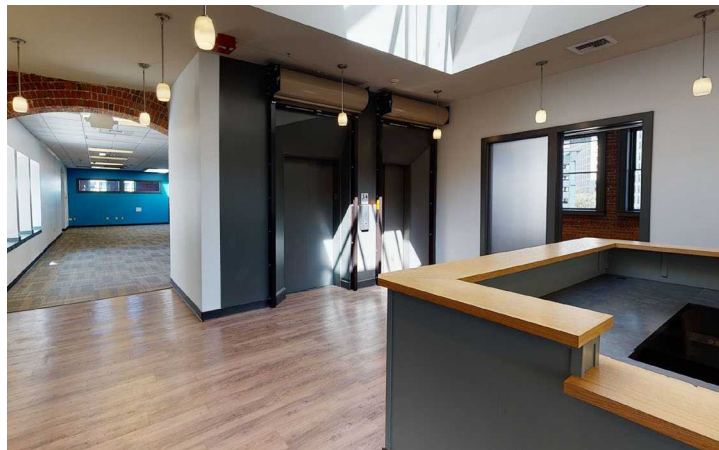
THE
INTERURBAN
BUILDING

157 Yesler Way, Seattle, WA 98104

Suite 600 | The Penthouse



- 9 Top floor
- 9 8,550 RSF
- 9 Elevators open directly into space
- 9 Massive skylights and tons of natural light
- 9 In-suite restrooms
- 9 \$32.00/SF/year, Full Service
- 9 [Virtual Tour »](#)



Colliers

THE INTERURBAN BUILDING

157 Yesler Way, Seattle, WA 98104

Location Details

- 9 Prime Pioneer Square neighborhood location
- 9 Transit Score: **100**
Metro bus stops directly outside the building; two-minute walk to light rail; five-minute walk to First Hill Streetcar or King Street Station; six-minute walk to Colman Dock
- 9 Walk Score: **98**
Restaurants: Tat's Delicatessen and Nirmal's (both on site); Shawn O'Donnell's Grill/Pub, MOD Pizza, Cafe Paloma, The Stop, Damn the Weather, 84 Yesler, Flatstick Pub...

Colliers



THE INTERURBAN BUILDING

157 Yesler Way, Seattle, WA 98104

Contact:

Dan Dahl
206 650 6154
dan.dahl@colliers.com

David Gurry
206 931 6474
david.gurry@colliers.com

Colliers