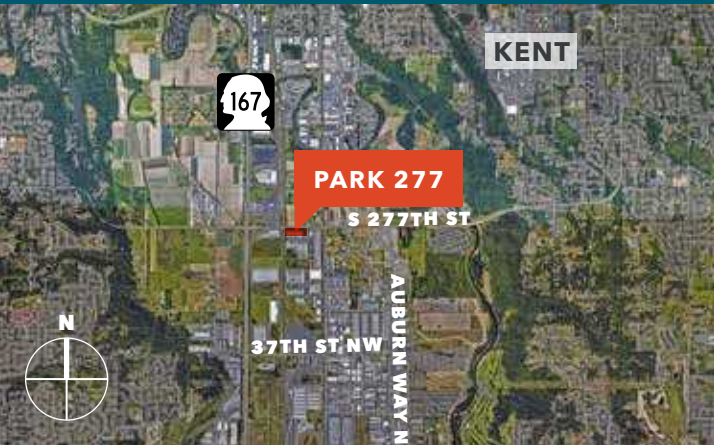




FOR LEASE

Park 277

5103 D ST NW, SUITE 103, AUBURN, WA



For leasing
information contact

CHRIS CORR
206.248.7324
chris.corr@kidder.com

**Kidder
Mathews**

This information supplied herein is from sources we deem reliable. It is provided without any representation, warranty, or guarantee, expressed or implied as to its accuracy. Prospective Buyer or Tenant should conduct an independent investigation and verification of all matters deemed to be material, including, but not limited to, statements of income and expenses. Consult your attorney, accountant, or other professional advisor.

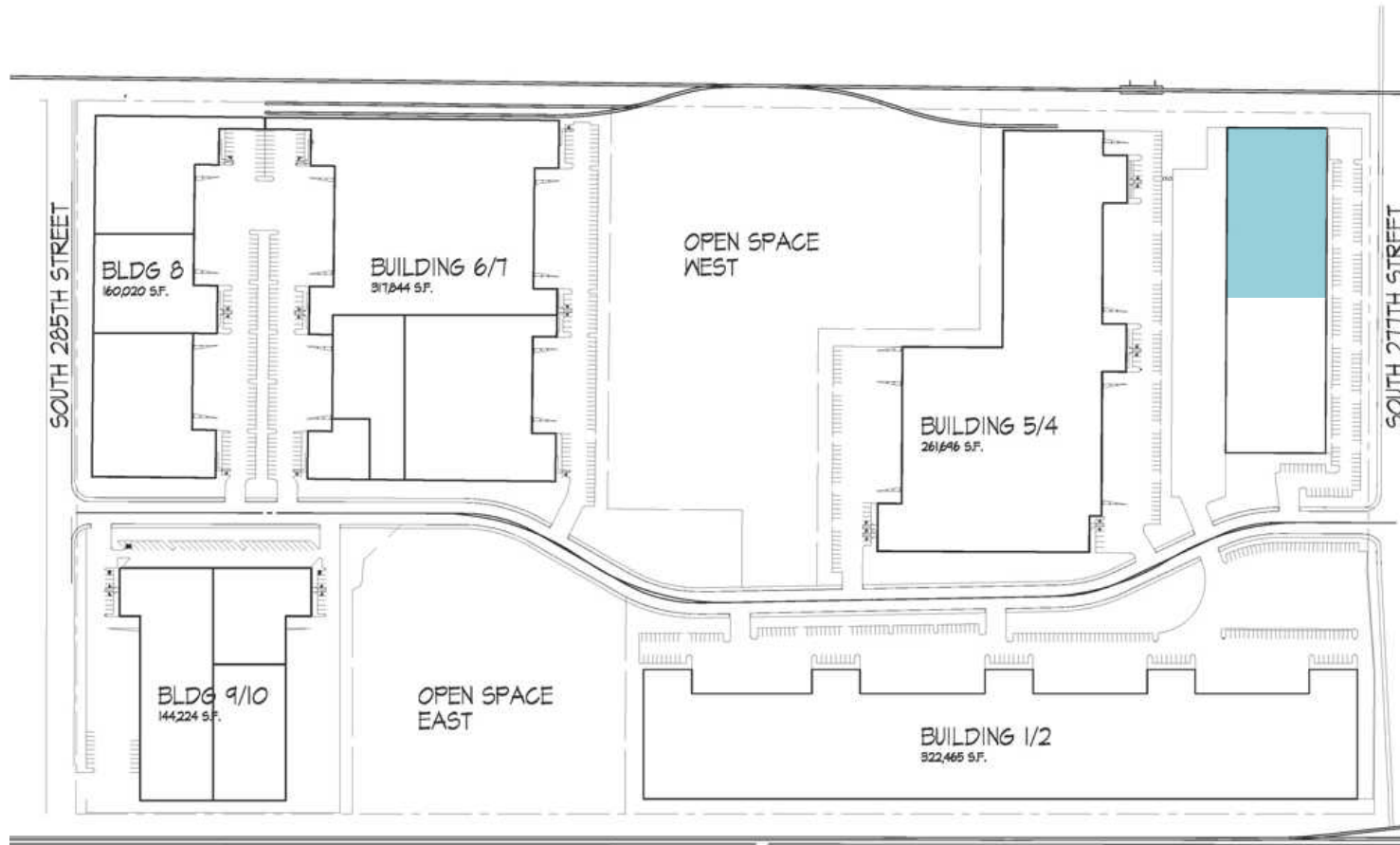
KIDDER.COM

FOR LEASE

Park 277

5103 D ST NW, SUITE 103, AUBURN, WA

Site Plan



Available now

65,744 SF total

6,101 SF existing office

24' clear height

LOADING doors include 1 grade-level and 8 dock-high

HIGH image / identity park

COLUMN spacing is 33'4" x 48'

EXCELLENT access off of SR-167

LOCAL owner deal maker

END cap space

3 pit levelers with weather seals

CHRIS CORR

206.248.7324

chris.corr@kidder.com

KIDDER.COM

This information supplied herein is from sources we deem reliable. It is provided without any representation, warranty, or guarantee, expressed or implied as to its accuracy. Prospective Buyer or Tenant should conduct an independent investigation and verification of all matters deemed to be material, including, but not limited to, statements of income and expenses. Consult your attorney, accountant, or other professional advisor.

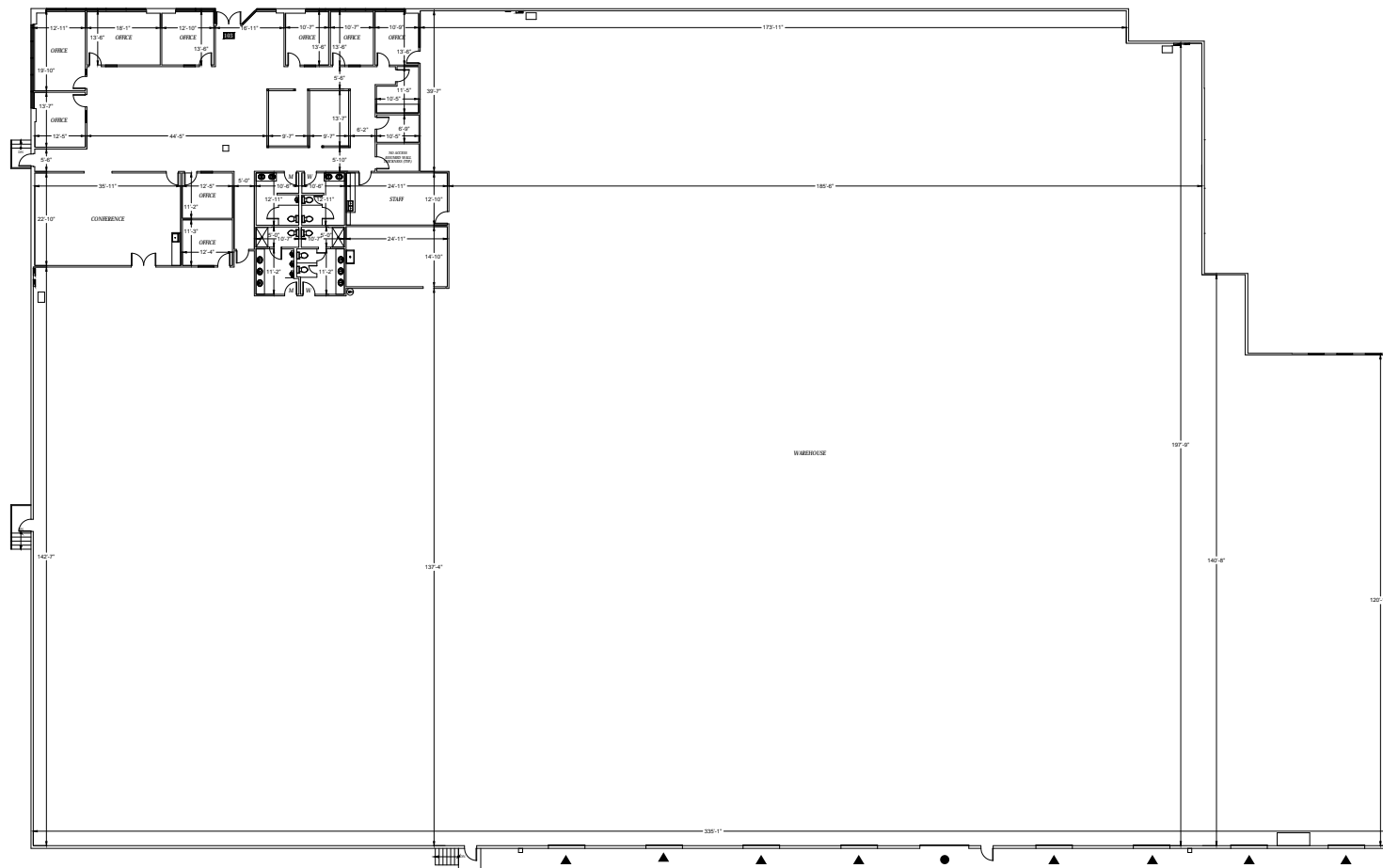


FOR LEASE

Park 277

5103 D ST NW, SUITE 103, AUBURN, WA

Floor Plan



65,744 SF

TOTAL BUILDING

6,101 SF

EXISTING OFFICE

8 DH/1 GL

LOADING

CHRIS CORR

206.248.7324

chris.corr@kidder.com

KIDDER.COM

This information supplied herein is from sources we deem reliable. It is provided without any representation, warranty, or guarantee, expressed or implied as to its accuracy. Prospective Buyer or Tenant should conduct an independent investigation and verification of all matters deemed to be material, including, but not limited to, statements of income and expenses. Consult your attorney, accountant, or other professional advisor.

 **Kidder
Mathews**