

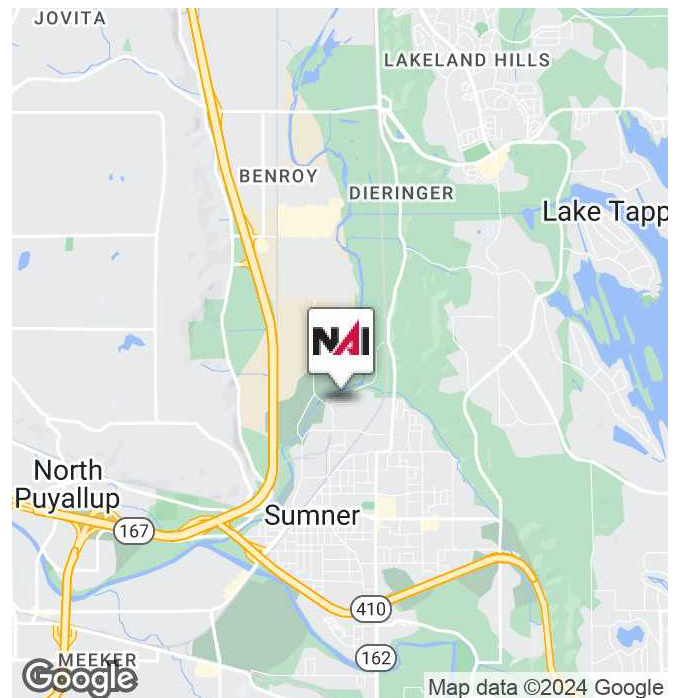


1524 Sumner Building

1524 45th St E, Suite 102, Sumner, WA 98390

Property Highlights

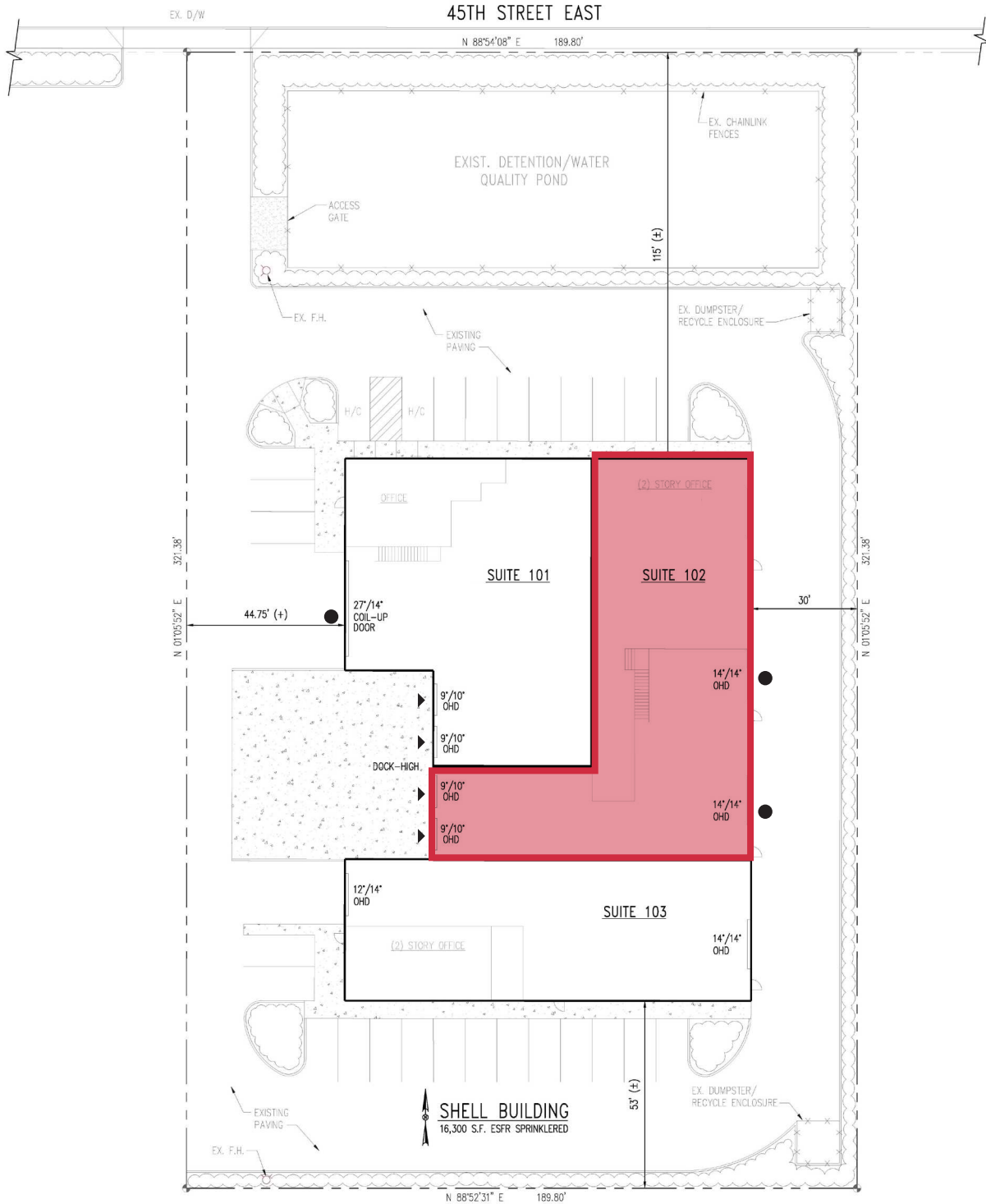
- 9,133 SF (5,282 SF office)
- 2 dock high doors
- 2 grade level doors (14'X14')
- 24' clear height
- Great access to SR 167
- Available now
- Call for rates



Connor Powell, SIOR, CCIM Partner | 425.586.5642
cpowell@nai-psp.com

Jeff Forsberg, CCIM Principal | 425.586.5610
jforsberg@nai-psp.com





- Available
- Grade Level Door
- ▲ Dock High Door

Connor Powell, SIOR, CCIM Partner | 425.586.5642
cpowell@nai-psp.com

Jeff Forsberg, CCIM Principal | 425.586.5610
jforsberg@nai-psp.com

