



Greentree Plaza

RETAIL
FOR
LEASE

Greentree Plaza

RETAIL FOR LEASE

Located on SE Everett Mall Way in Everett's vibrant retail corridor, Greentree Plaza is anchored by Target and Sportsman's Warehouse and draws significant foot traffic from over 119,000 residents within a 3-mile radius. The center offers high-visibility retail spaces with excellent access and signage opportunities, including pylon options for larger tenants. Join notable co-tenants such as Starbucks, Chipotle, Jamba Juice, Gentle Dental, and Visionworks. Spaces are flexible, with possibilities for unit combination to suit larger requirements.

The Hub at Everett, formally the Everett Mall located directly 1/2 miles down Everett Mall Way is undergoing a fresh renovation that has already attracted some of the strongest national tenant such as Trader Joes, Chick-fil-a, and Best Buy. Once complete the Hub at Everett will be first class shopping destination aiming to pull customers from all over Snohomish County and beyond increases car and foot traffic for the entire area.

For more details on configurations and leasing rates, please contact us today. Position your business for success at Greentree Plaza!





DEMOGRAPHICS

POPULATION

1-Mile: 15,663
 2-Mile: 69,836
 3-Mile: 119,035
 5-Mile: 244,980

AVERAGE HOUSEHOLD INCOME

1-Mile: \$69,529
 2-Mile: \$69,990
 3-Mile: \$74,644
 5-Mile: \$91,472

TRAFFIC COUNTS

34,000
 vehicles per day
 at SE Everett Mall Way
 and 7th Ave SE



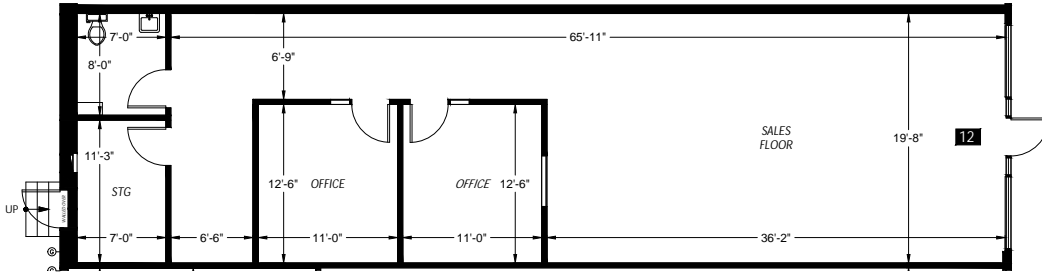
Greentree Plaza

The Hub at Everett

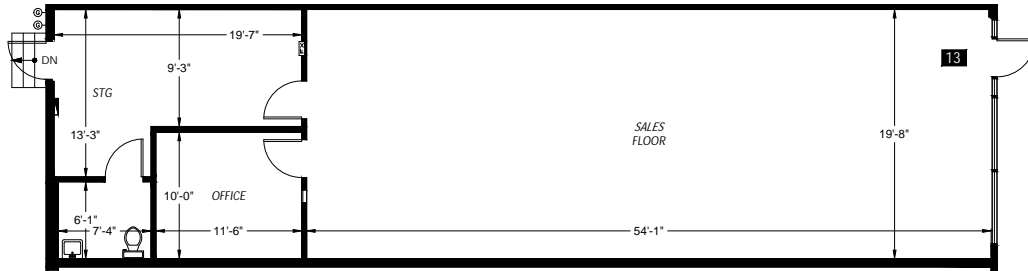
- TRADER JOE'S
- REGAL CINEMAS
- OLD NAVY
- Burlington
- FAMOUS footwear
- Bath & Body Works
- PARTY CITY
- zumiez
- LA FITNESS
- BUFFALO WILD WINGS
- ULTA KAY
- REBECCA MARRIOTT JEWELERS
- T-Mobile
- AT&T Wireless
- Olive Garden



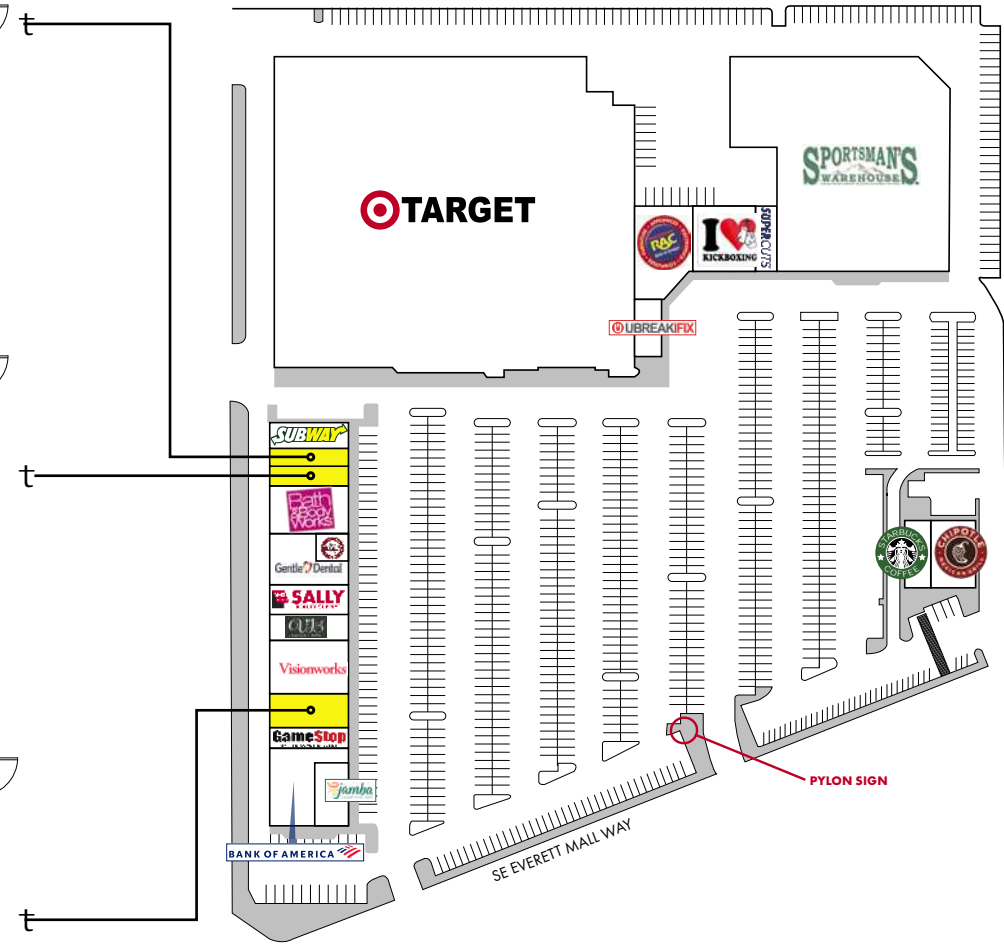
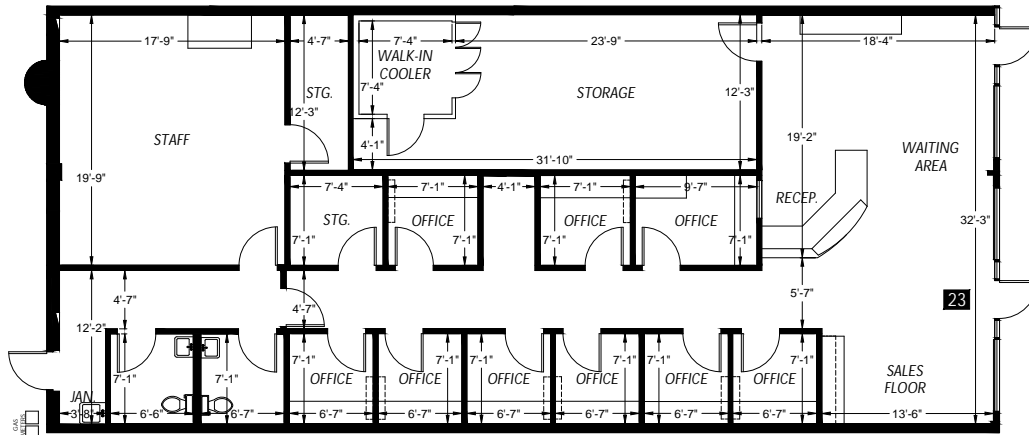
Suite 12 - 1,519 SF AVAILABLE



Suite 13 - 1,518 SF AVAILABLE



Suite 23 - 2,475 SF AVAILABLE



RETAIL FOR LEASE

305-505 SE Everett Mall Way
Everett, WA 98208

Tiffini Connell

tiffini@wccommercialrealty.com

Jonathan Willett

jonathan@wccommercialrealty.com

WCCR

West Coast Commercial Realty

DISCLAIMER: The above information has been secured from sources believed to be reliable, however, no representations are made to its accuracy. Prospective tenants or buyers should consult their professional advisors and conduct their own independent investigation. Site plan and configuration are subject to change. Properties are subject to change in price and/or availability without notice. West Coast Commercial Realty, LLC

