

511 BOREN

AVAILABLE SPACE
Suite 301: 2,200 RSF

TRACY TURNURE
310.906.7476
Tacy.Turnure@nmrk.com

JESSE OTTELE
206.452.4529
Jesse.Ottele@nmrk.com

NEWMARK



BUILDING FEATURES



Unparalleled Freeway access to I-5



Bike Storage with Showers/Lockers



Dog Friendly



Parking available in nearby lots



Daily, rotating food trucks located near building



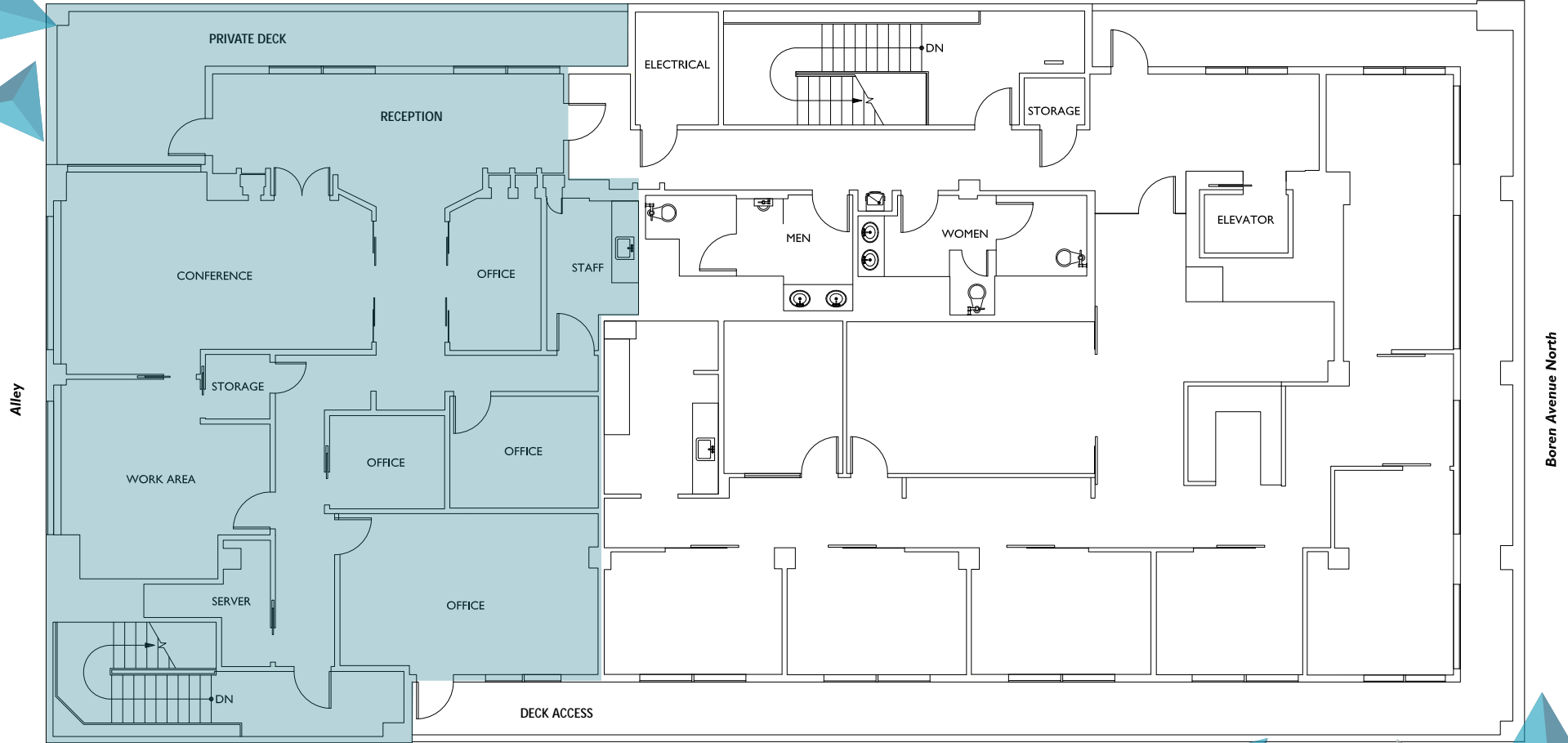
Internet Provider - CenturyLink

511 BOREN





- Suite 301
- Available June 1, 2024
- 2,200 SF



Suite 301

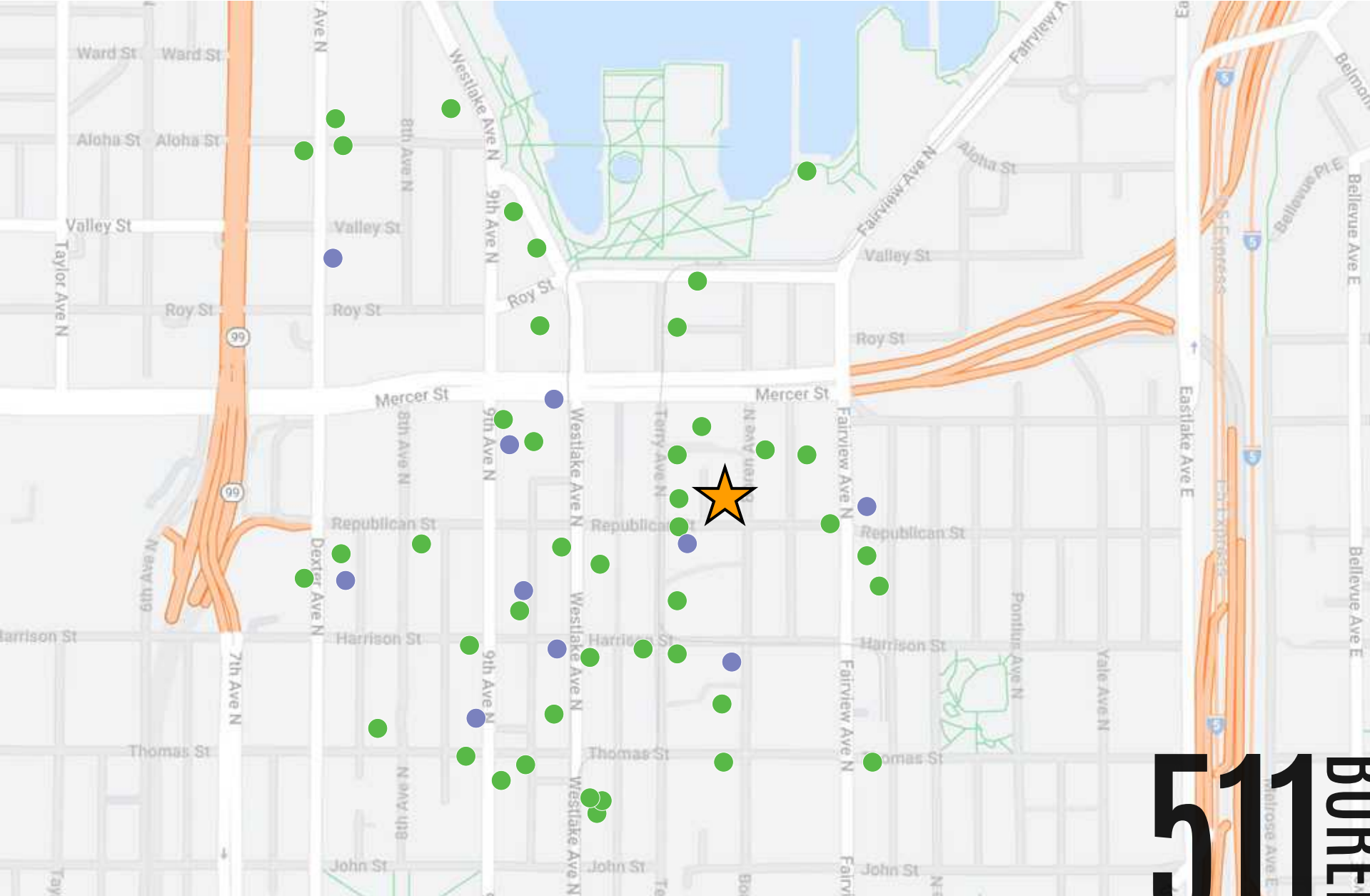
2,200 RSF | Available June 1, 2024

- Former Physical Therapy Center
- 3 Large Training and Workout Rooms
- Multiple Private Therapy or Work Rooms
- Configured for 5 private offices with reception and conference room
- Private Outdoor Deck (not included in the RSF)

511 BOREN

AMENITIES MAP

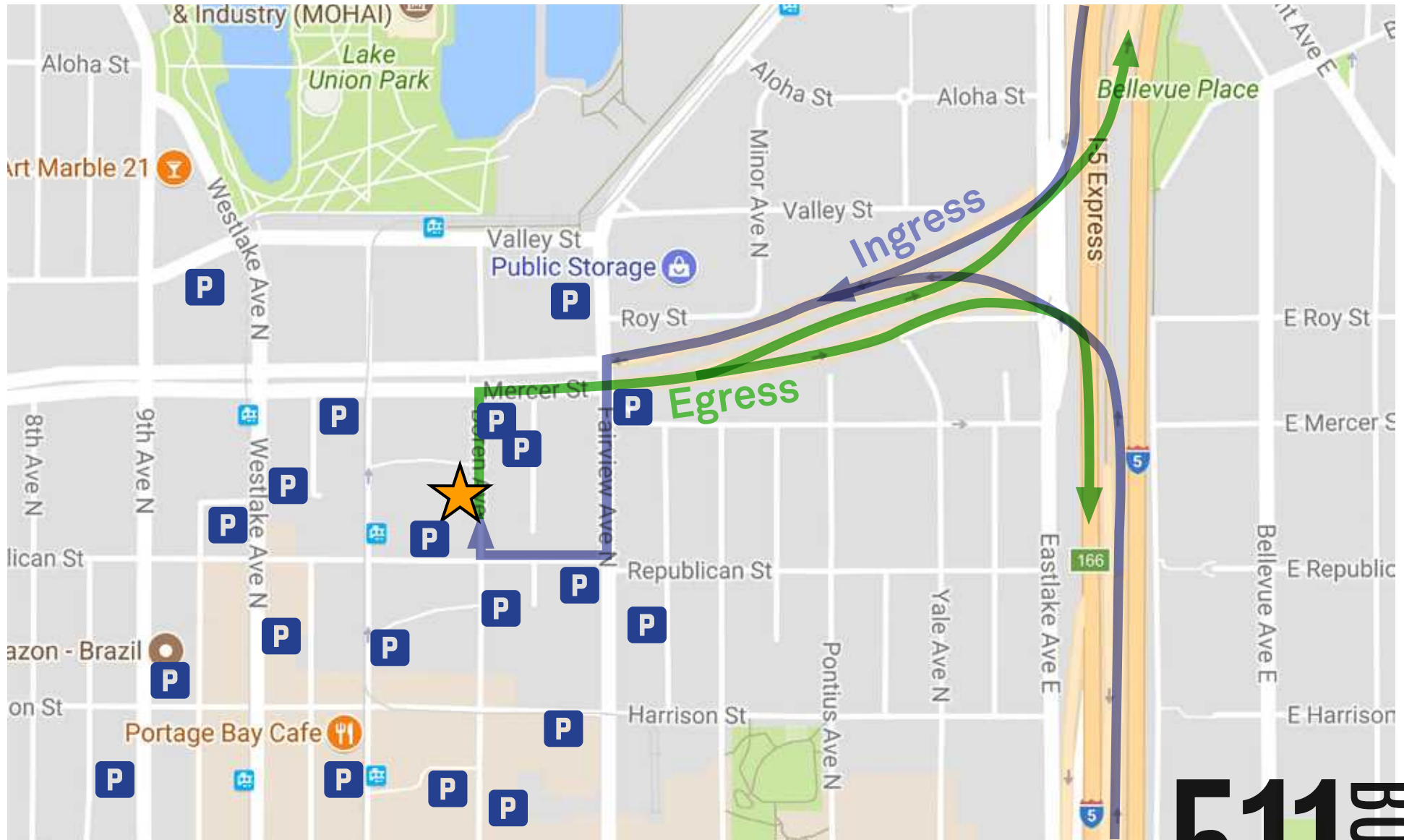
- Food & Drink
- Coffee



511
BOREN

UNPARALLELED FREEWAY ACCESS

➔ Egress
➔ Ingress



The distributor of this communication is performing acts for which a real estate license is required. The information contained herein has been obtained from sources deemed reliable but has not been verified and no guarantee, warranty or representation, either express or implied, is made with respect to such information. Terms of sale or lease and availability are subject to change or withdrawal without notice. 18-1023_5/24

511 BOREN