

Industrial / Flex for Lease

PARK 520 - NEAR FUTURE LIGHT RAIL STATION

6855 176th Ave NE, Redmond, WA 98052

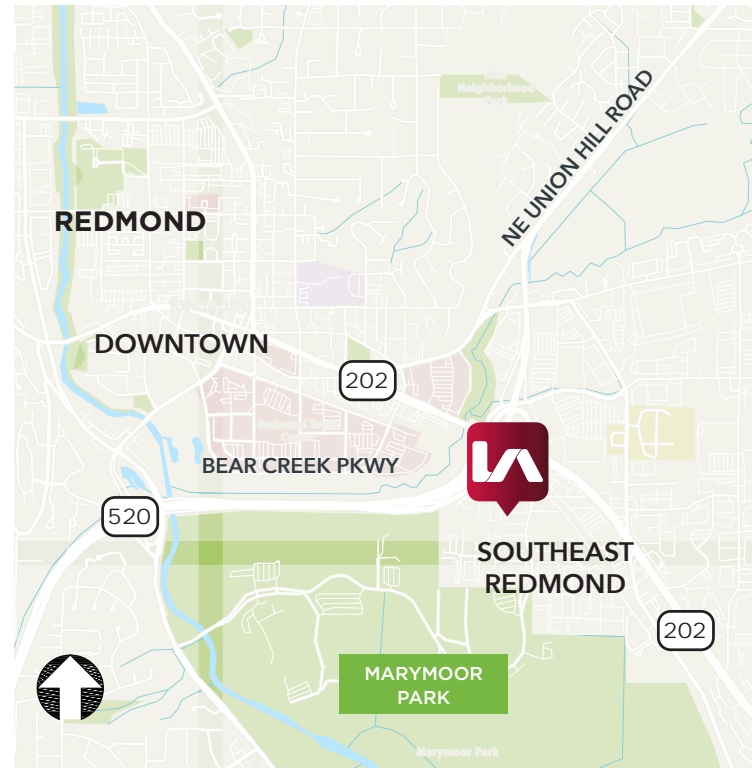


LISTING INFORMATION

ADDRESS: 6855 176th Ave NE, Redmond, WA
SUITE B-265: 3,545 SF (822 SF Office)
LEASE RATE: \$20.00 SF/Yr (NNN)
ZONING: MDD2

COMMENTS

- » Rare Light Industrial space in Redmond Business Park
- » Across the street from the future SE Redmond /Marymoor Village light rail station (estimated 2024)
- » Easy access to WA-520 and Downtown Redmond
- » Office/Warehouse/Mezzanine space available



Aaron Mathieu

amathieu@lee-associates.com
C 206.948.4670

Jim Reed, SIOR

jreed@lee-associates.com
C 425.679.1681

Carson Scott

cscott@lee-associates.com
C 425.736.3752

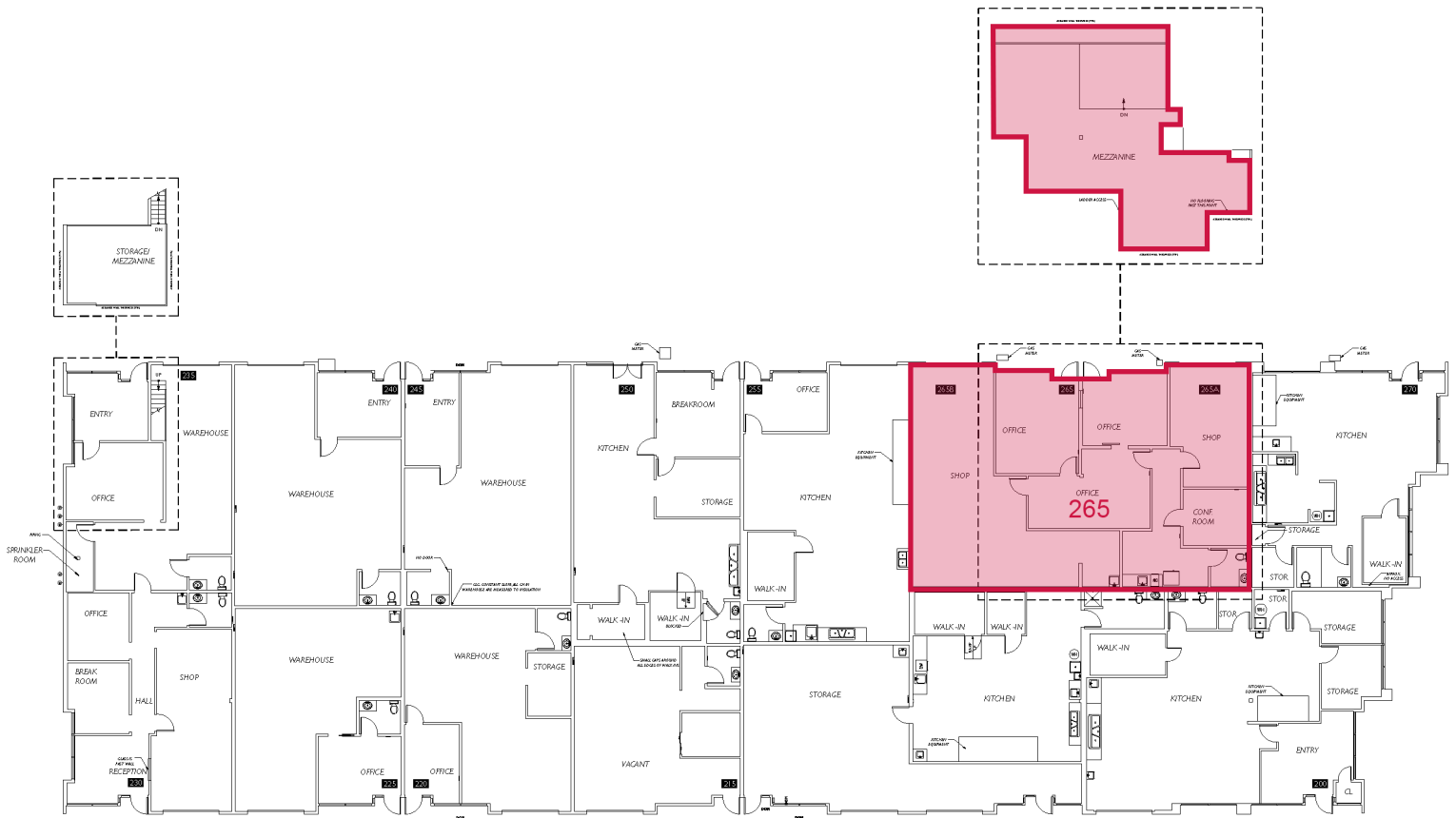


Industrial / Flex for Lease

PARK 520 - NEAR FUTURE LIGHT RAIL STATION

6855 176th Ave NE, Redmond, WA 98052

FLOOR PLAN



SUITE	SIZE	LEASE TYPE	DESCRIPTION
Suite B-265	3,545 SF	NNN	882 SF O / 1,484 SF WH / 1,179 SF Mezzanine

Aaron Mathieu
amathieu@lee-associates.com
C 206.948.4670

Jim Reed, SIOR
jreed@lee-associates.com
C 425.679.1681

Carson Scott
cscott@lee-associates.com
C 425.736.3752