

FOR LEASE

West Washington Street & River Road
Sequim, WA 98382



SEQUIM VILLAGE MARKETPLACE

Josh Parnell | Justin Holmes

First Western Properties—Tacoma Inc. | 253.472.0404
6402 Tacoma Mall Blvd, Tacoma, WA 98409 | fwp-inc.com

AVAILABLE

50,051 SF LOT - 4,666 SF MAX BUILDING SIZE
DRIVE-THRU POSSIBILITY WITH FRONTAGE ON W WASHINGTON

49,218 SF LOT - 3,500 SF MAX BUILDING SIZE
DRIVE-THRU POSSIBILITY, RIGHT OFF HIGHWAY 101

ENDCAP SPACE - 18,089 SF

- Anchored by Costco and The Home Depot
- One of the largest shopping centers on the Olympic Peninsula
- Visible from SR 101 bypass
- Proposed pads and junior anchor options
- Walmart Supercenter across the street



Population



Average HH Income

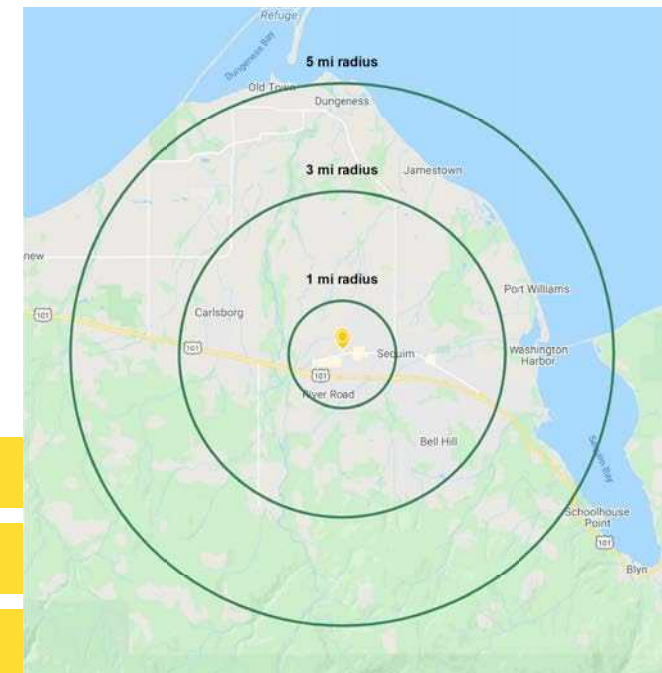


Daytime Population

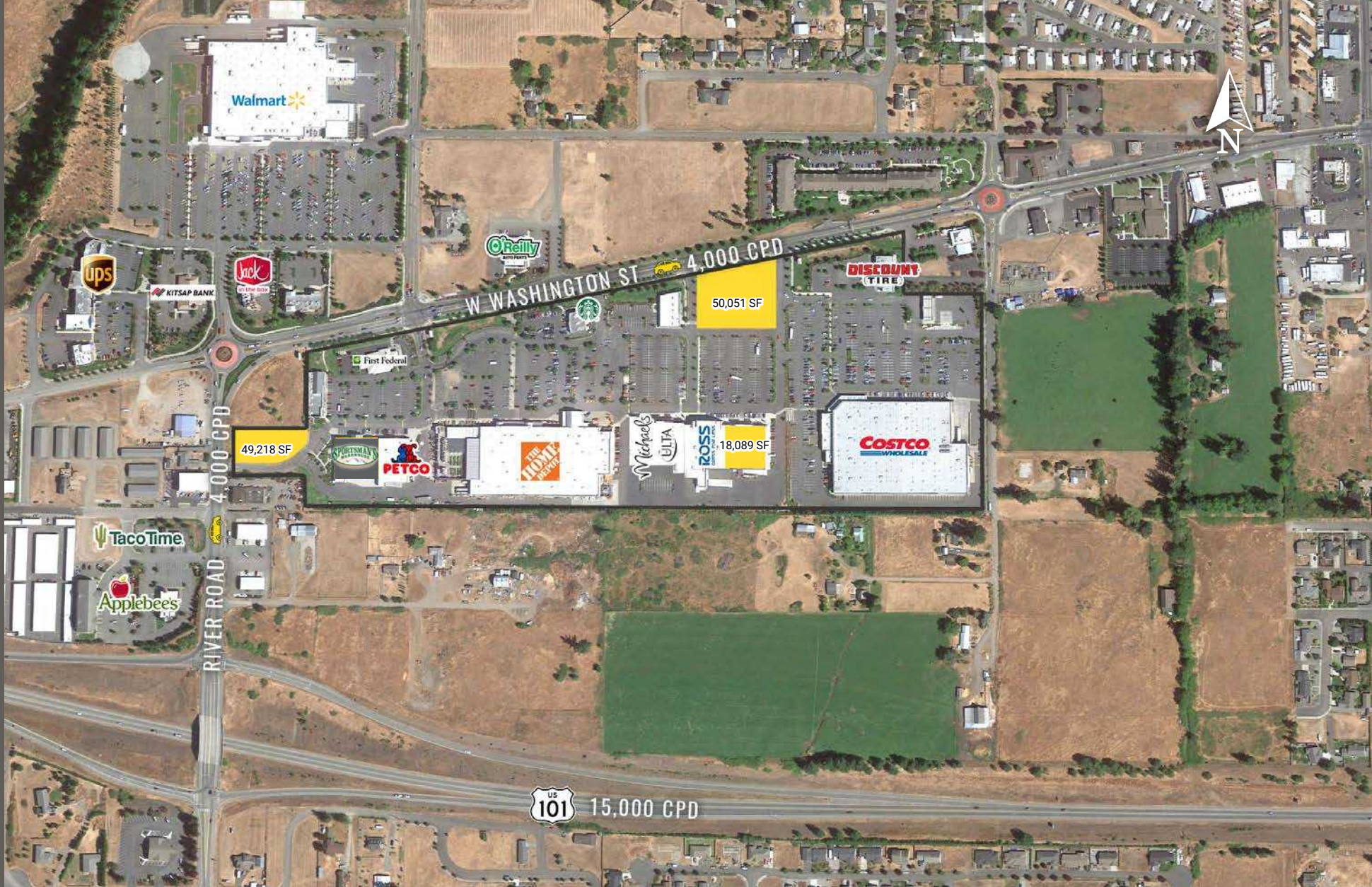
Regis - 2024

	Population	Average HH Income	Daytime Population
Mile 1	4,813	\$92,011	4,790
Mile 3	19,469	\$98,495	17,061
Mile 5	28,062	\$104,031	23,153

TENANTS



LOCATION DETAILS



Direct access
from SR 101



Located in the
Sequim Retail Core

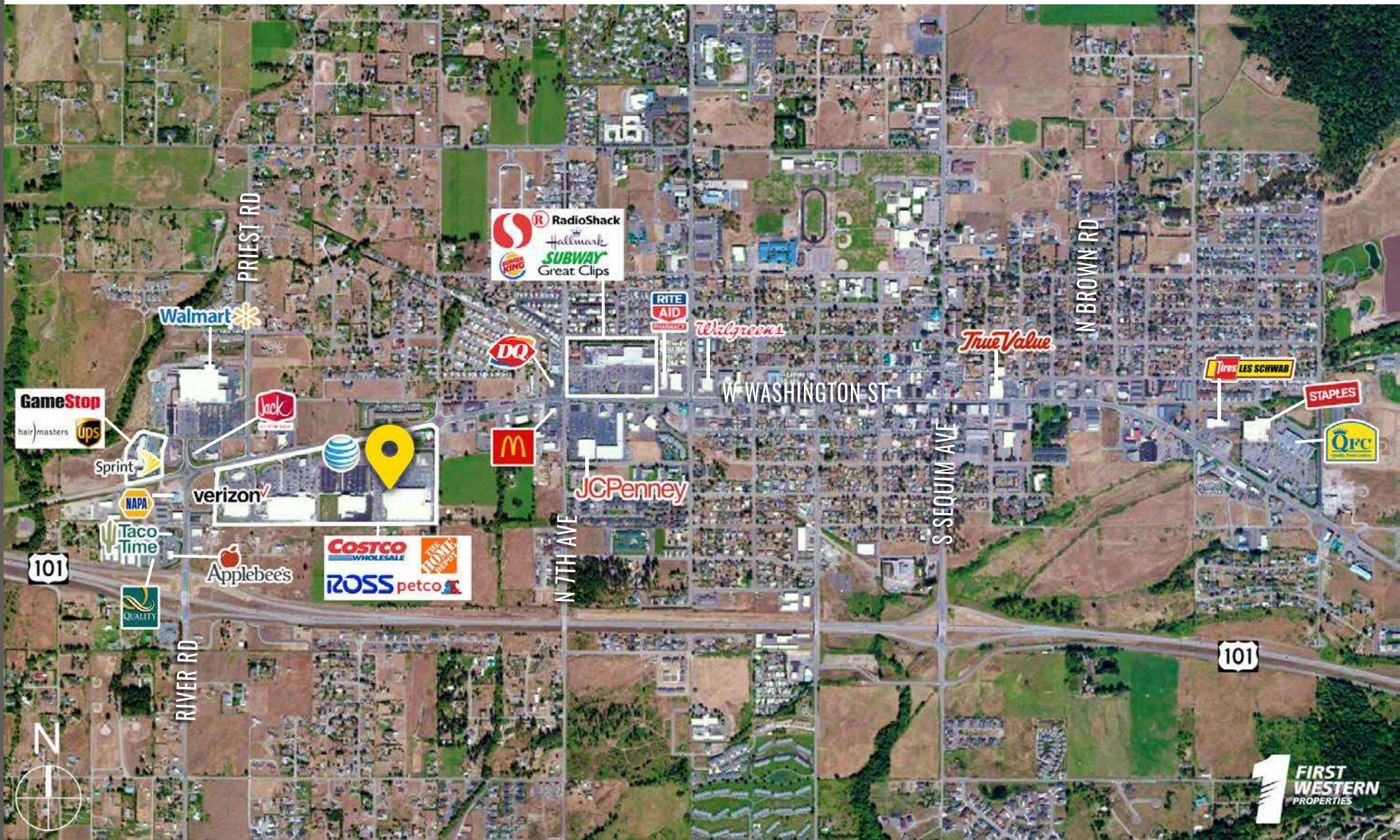


4,000 CPD
W Washington St



15,000 CPD
SR 101

LOCATION AERIAL



TACOMA | KIRKLAND | PORTLAND | SEATTLE



RELATIONSHIP FOCUSED. RESULTS DRIVEN.

JOSH PARNELL

253.284.3630
josh@firstwesternproperties.com

JUSTIN HOLMES

253.447.2282
justin@firstwesternproperties.com



First Western Properties—Tacoma Inc. | 253.472.0404
6402 Tacoma Mall Blvd, Tacoma, WA 98409 | fwp-inc.com

© First Western Properties, Inc. DISCLAIMER: The above information has been secured from sources believed to be reliable, however, no representations are made to its accuracy. Prospective tenants or buyers should consult their professional advisors and conduct their own independent investigation. Properties are subject to change in price and/or availability without notice.