

RETAIL/OFFICE FOR LEASE

MAGNOLIA VILLAGE

3300 W McGraw, Seattle, WA 98199

AVAILABLE
NOW



For more information please contact:

LAURA MILLER
laura@gibraltarusa.com
206.351.3573

LEX PETRAS
lexp@gibraltarusa.com
206.618.8462



3300 W MCGRAW, SEATTLE, WA 98199

MAGNOLIA VILLAGE



OVERVIEW

Available now! Rare opportunity to lease highly sought after office/retail space in the heart of Magnolia Village

High visibility and strong foot traffic location. Surrounding businesses include Serendipity Café, Pink Salt Restaurant, Petit Pierre Bakery, Mondello Restaurant, Nutty Squirrel Gelato, Mura Restaurant, Uptown Espresso Magnolia Garden Center and more!

HIGHLIGHTS

- Former bank space, ideal for service office or boutique retail
- Adjacent co-tenant is Starbucks
- Free onsite covered customer parking available (no tenant parking)
- 1,476 SF
- Rental Rate \$30/SF/YR plus est. 2024 NNN (\$9.16) = \$4,816.68 per month



36

TRANSIT SCORE



90

WALK SCORE



62

BIKE SCORE



14,745

TOTAL POPULATION



6,157

TOTAL HOUSEHOLDS



\$150,159

MEDIAN INCOME

* Demographic data derived from 2023, 1 mile radius

This information has been obtained from sources believed reliable. No guarantee, warranty or representation, express or implied, is made as to the accuracy of the information contained herein, and same is submitted subject to errors, omissions, change of price, rental or other conditions withdrawal without notice, and to any special listing conditions, imposed by our principals. Any projections, opinions, assumptions or estimates used are for example only and do not represent the current or future performance of the property.

3300 W MCGRAW, SEATTLE, WA 98199

MAGNOLIA VILLAGE

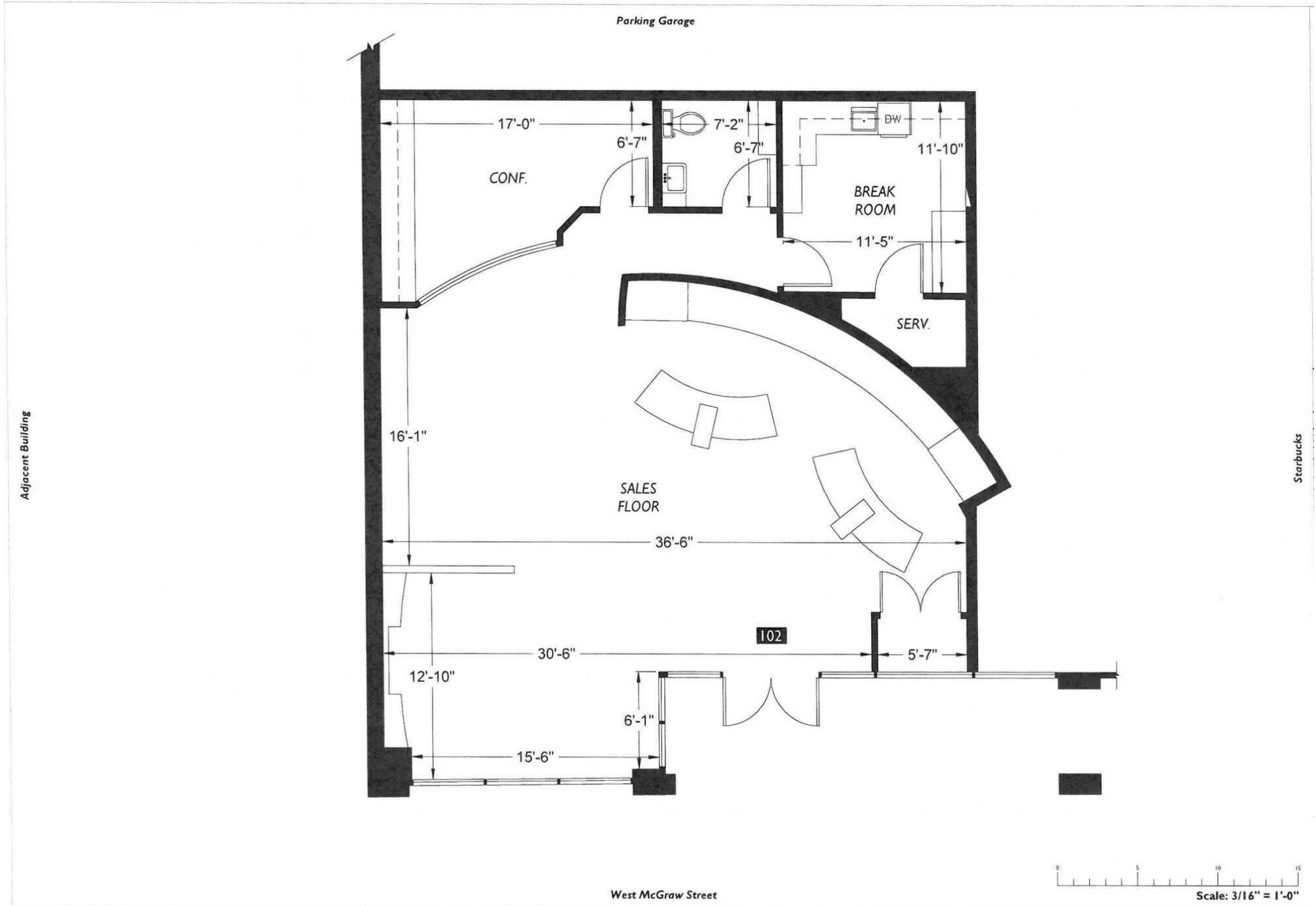


Retail Storefront



Customer Parking

MAGNOLIA VILLAGE



3300 W MCGRAW, SEATTLE, WA 98199

MAGNOLIA VILLAGE

