

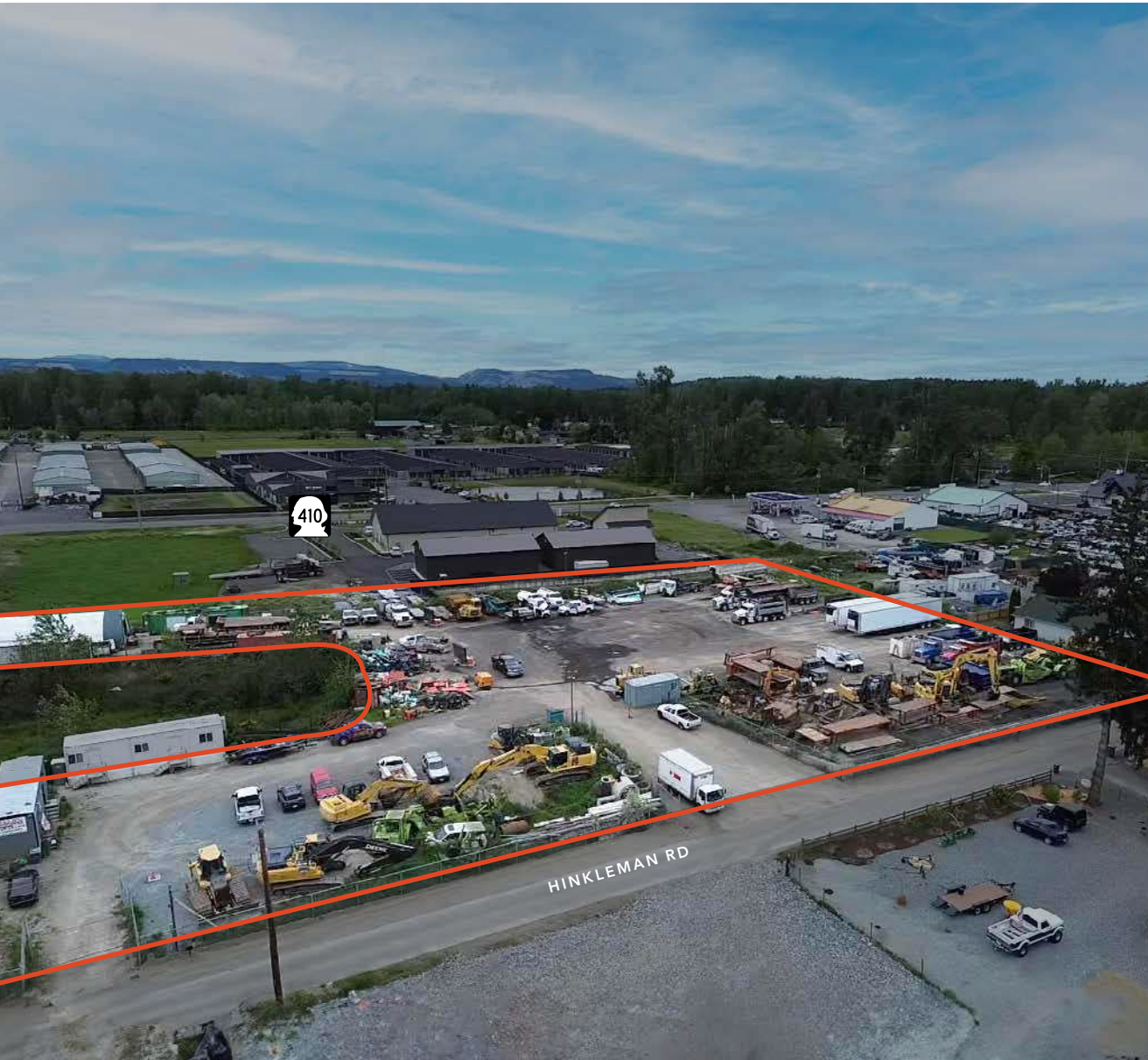


28008 HINKLEMAN RD

FOR LEASE

*Hard to find IOS yard with easy
access to HWY 410*

28008 HINKLEMAN RD, BUCKLEY, WA 98321



PROPERTY OVERVIEW

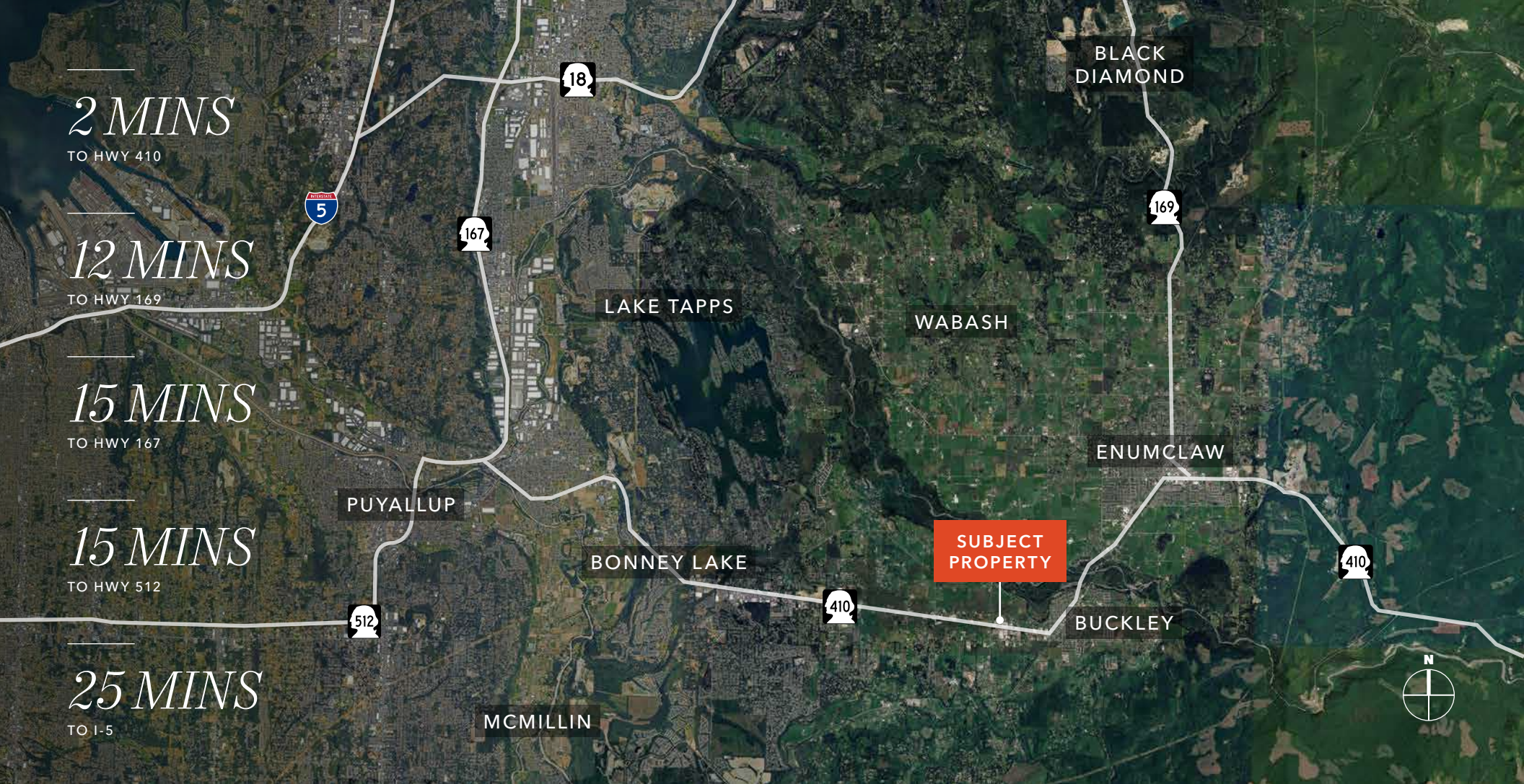
LAND AC	2.31
LAND SF	100,536
OFFICE SF	Two modular offices
PROPERTY FEATURES	Lighted, Fenced, Graveled, Gated, Security Cameras available
ZONING	Industrial

→ ZONING MAP

→ ZONING USES

\$15,000
MONTHLY, + NNN

09/2024
AVAILABLE



2 MINS

TO HWY 410

12 MINS

TO HWY 169

15 MINS

TO HWY 167

15 MINS

TO HWY 512

25 MINS

TO I-5

28008 HINKLEMAN RD

For more information on this property, please contact

CHRIS TRUSSEL
Associate Vice President
253.722.1467
chris.trussel@kidder.com

MATT MCLENNAN, SIOR, CCIM
Executive Vice President
253.722.1458
matt.mclennan@kidder.com

KIDDER.COM

This information supplied herein is from sources we deem reliable. It is provided without any representation, warranty, or guarantee, expressed or implied as to its accuracy. Prospective Buyer or Tenant should conduct an independent investigation and verification of all matters deemed to be material, including, but not limited to, statements of income and expenses. Consult your attorney, accountant, or other professional advisor.

