



1123 Pacific Ave  
**TACOMA**

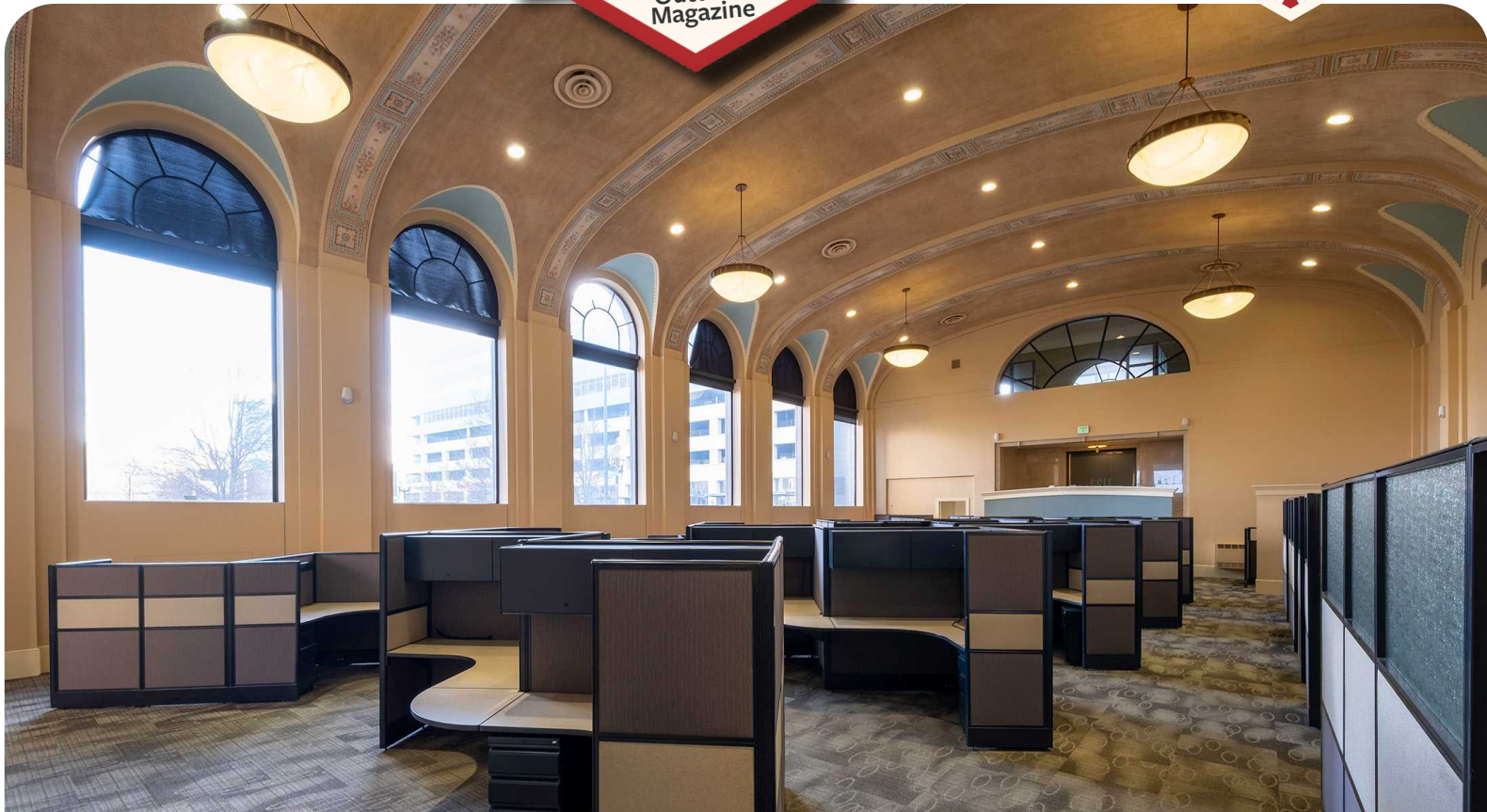


# 1123 Pacific Ave **TACOMA**

1123 Pacific is 18,600 SF of modern office and retail space in three floors, readily available, with dedicated parking, elevators, fiber internet and bright natural light.

Pacific Avenue anchors the downtown Tacoma experience as home to plentiful retail and dining, UWT, the Tacoma Art Museum and the Washington State History Museum.

At S 13th Street and Pacific Ave, 1123 Pacific has immediate access to I-705, the Light Rail and all of the amenities of downtown Tacoma.

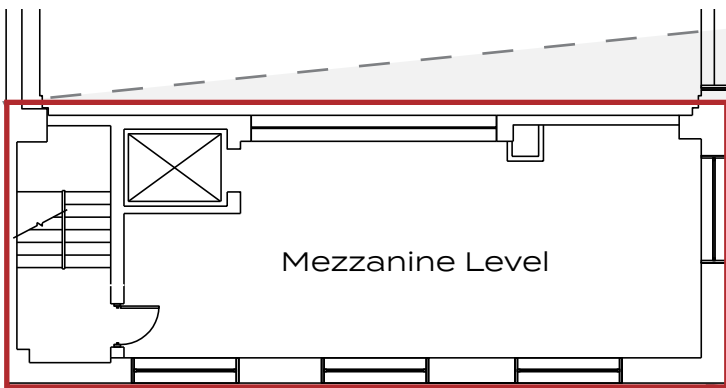
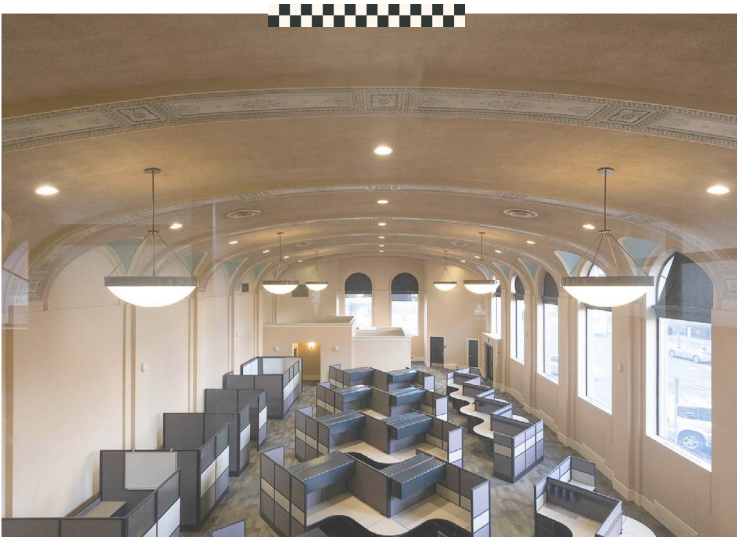


# 1123 Pacific Ave TACOMA

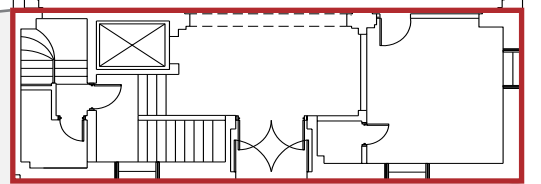
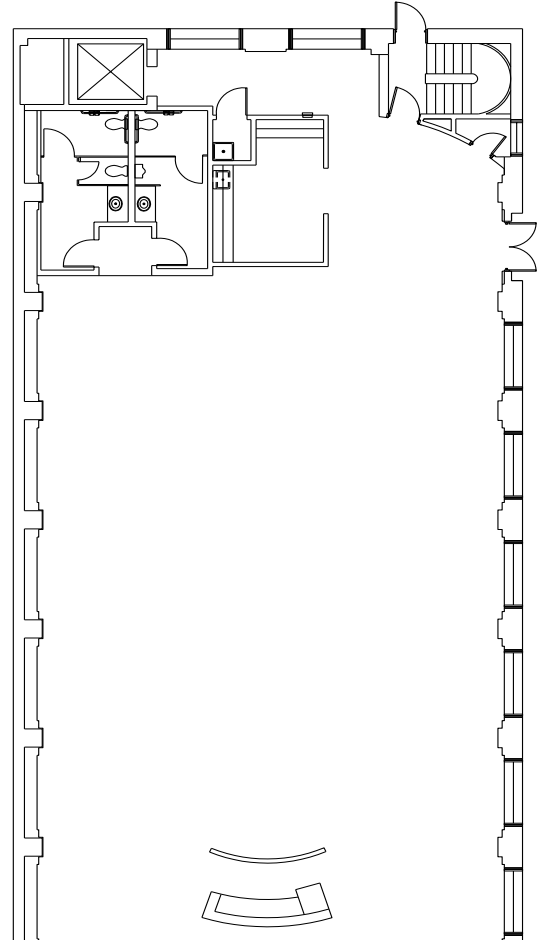


- Abundant natural light with soaring windows
- High artistic ceiling
- Wide open floor
- Prime corner for retail

First floor: 6,000 SF  
Mezzanine: 600 SF



*6,600 SF*



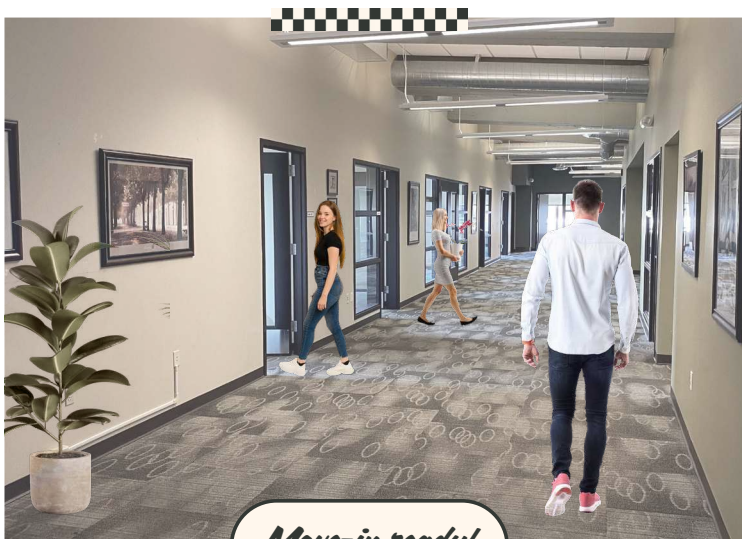
**First Floor**

# 1123 Pacific Ave TACOMA



- 7 private offices
- 2 conference rooms
- Flexible workspace
- Kitchenette & copy/break room
- Private restrooms

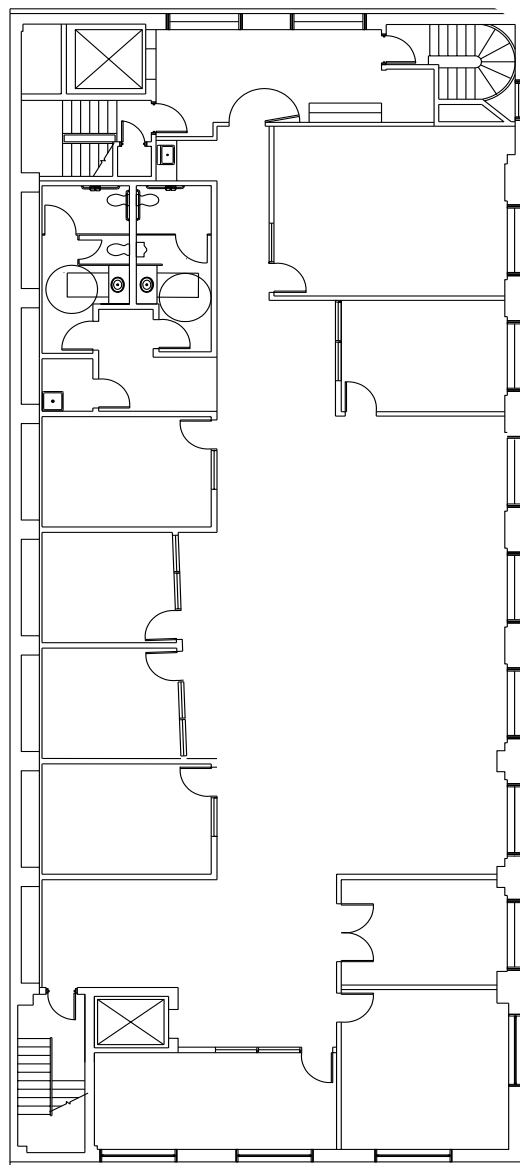
Spacious corridors, abundant natural light and  
Thea Foss water views



*Move-in ready!*



6,000 SF



**Second Floor**

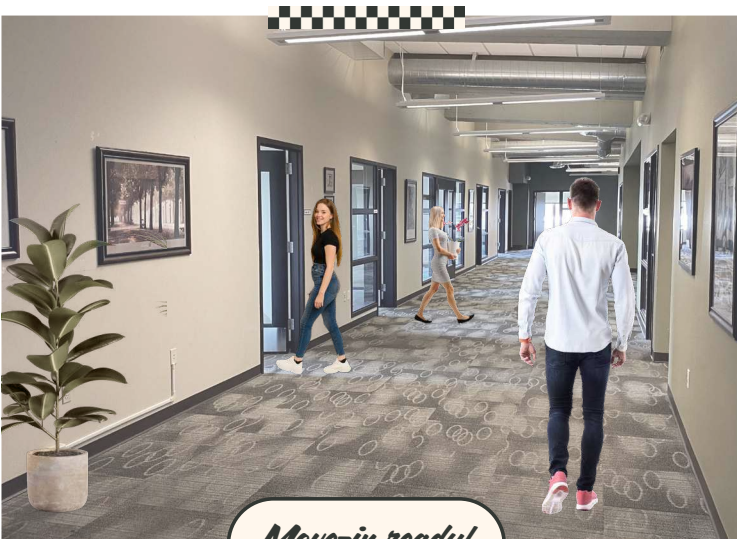


# 1123 Pacific Ave TACOMA



- 10 private offices with 2 conference rooms, or up to 12 private offices
- Kitchenette
- Private restrooms

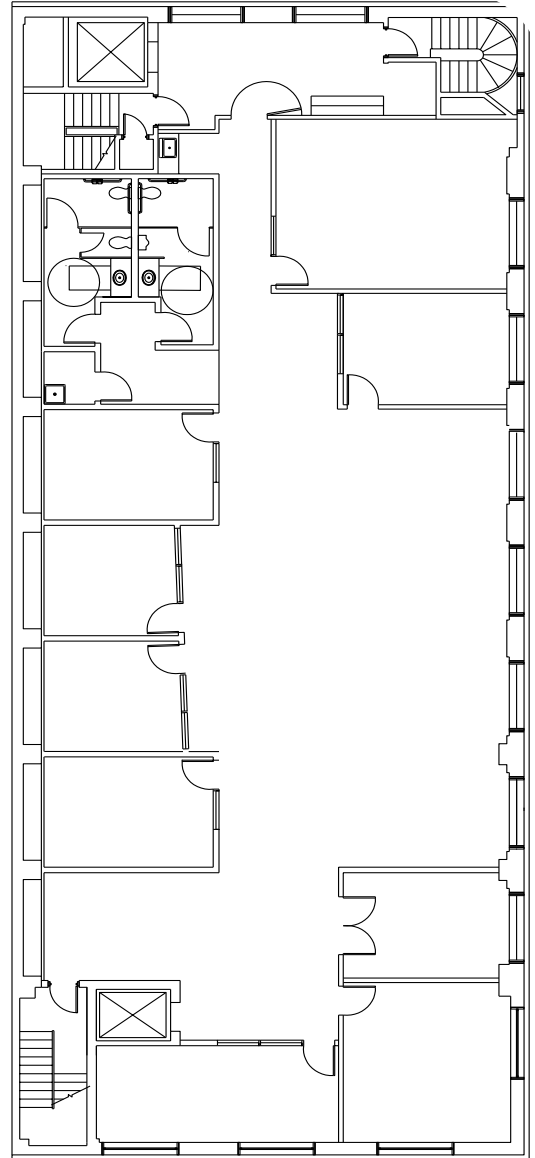
Spacious corridors, abundant natural light and Thea Foss water views



*Move-in ready!*



6,000 SF



**Third Floor**



# 1123 Pacific Ave TACOMA



Downtown Tacoma, WA, harmoniously melds robust architecture with contemporary elegance, radiating a timeless and dynamic ambiance. The central city is enriched with vivid murals, underscoring a prolific and notable art scene, infusing the streets with creative energy. Exceptionally walkable, light rail connects downtown with rides every 12-20 minutes. The innovative and artistic essence of Tacoma establishes it as a distinctive and appealing location.

950 Pacific Avenue, Suite 200, Tacoma, WA 98402 | 253.383.8382 | lee-mw.com

## *Leasing Contacts:*

### **HARRISON LAIRD**

PRINCIPAL

D 253.238.0044

[hlaird@lee-associates.com](mailto:hlaird@lee-associates.com)

### **JOHN BAUDER**

PRINCIPAL

D 253.238.0043

[jbauder@lee-associates.com](mailto:jbauder@lee-associates.com)



COMMERCIAL REAL ESTATE SERVICES

We obtained the information above from sources we believe to be reliable. However, we have not verified its accuracy and make no guarantee, warranty or representation about it. It is submitted subject to the possibility of errors, omissions, change of price, rental or other conditions, prior sale, lease or financing, or withdrawal without notice. We include projections, opinions, assumptions or estimates for example only, and they may not represent current or future performance of the property. You and your tax and legal advisors should conduct your own investigation of the property and transaction.