

224

WESTLAKE

224 Westlake Ave N Seattle, WA 98109

Rare, plug and play opportunity
in South Lake Union

FLOOR 2 | 6,123 SF

FLOOR 3 | 6,104 SF

CHARLIE FARRA

206.999.2928

charlie.farra@nrmk.com

DANIEL SEGER

206.487.5163

daniel.seger@nrmk.com

NEWMARK

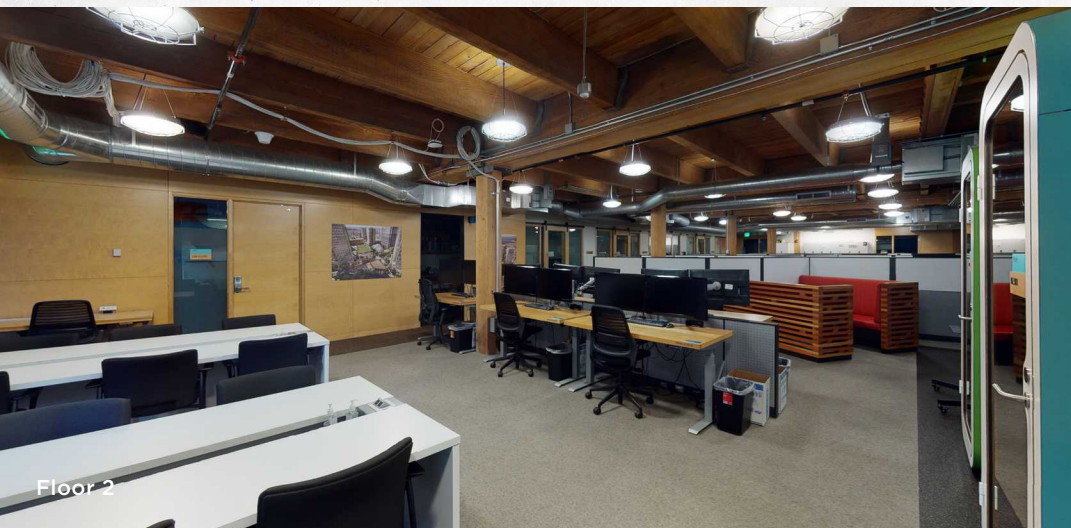




Floor 2



Floor 3



Floor 2

SPACE AVAILABLE

- Rare, plug and play opportunity in South Lake Union
- Fully renovated, creative building
- Creative finishes throughout
- Move-in ready
- Proximity to SLU Street Car
- Surrounded by Seattle's best restaurants and bars
- Bike storage and shower facility
- Efficient side-core design

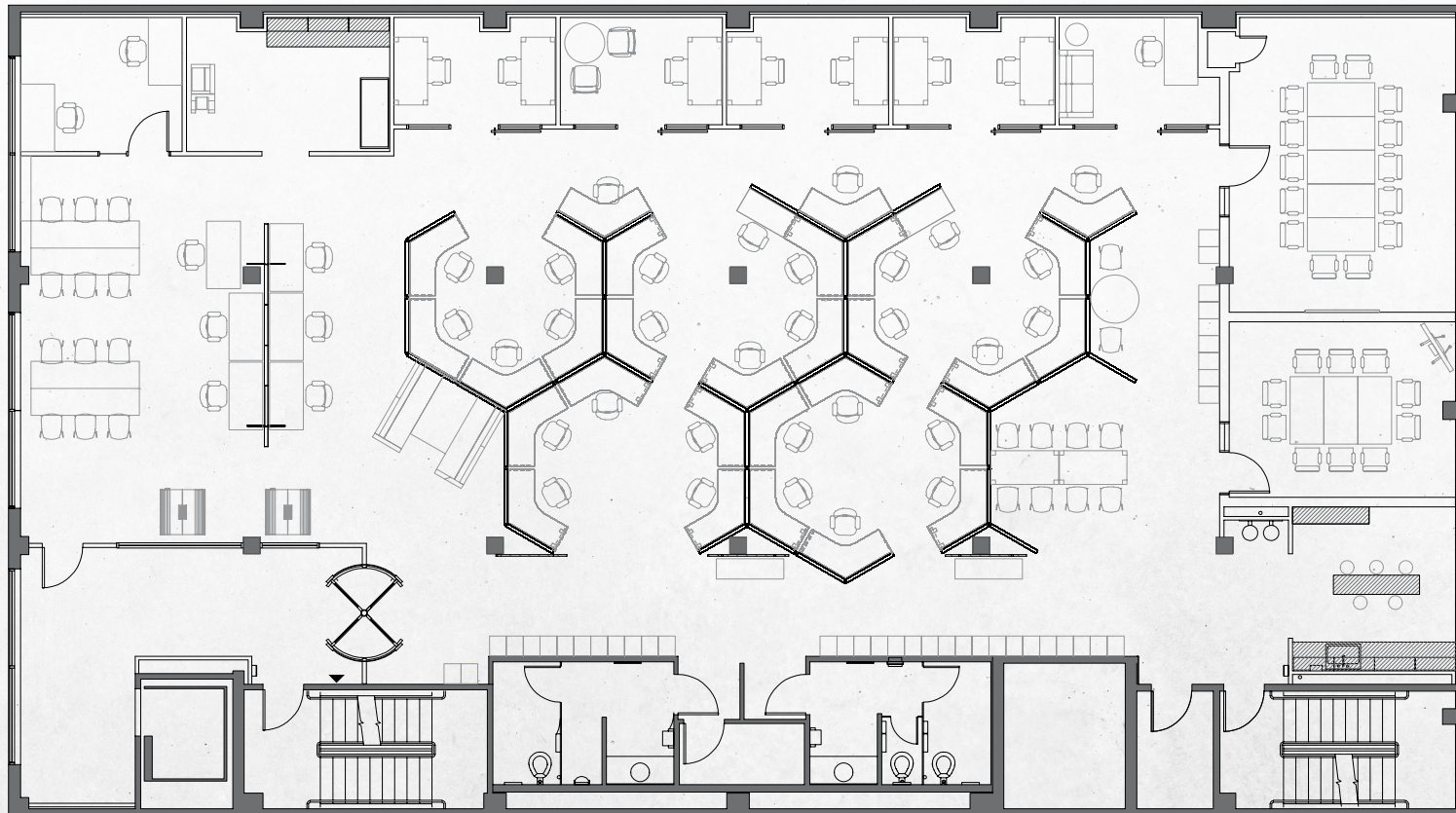
Floor 2	6,123 SF
Floor 3	6,104 SF
Total SF	12,227 SF

FLOOR 2 PLAN

360° TAKE A VIRTUAL TOUR

6,123 SF | 31 Desks | 6 Offices | 2 Phone Rooms | 2 Conference Rooms | 1 Kitchenette

Westlake Avenue



FLOOR 3 PLAN

360° TAKE A VIRTUAL TOUR

6,104 SF | 28 Desks | 3 Offices | 1 Kitchen | 1 Call Room

Westlake Avenue





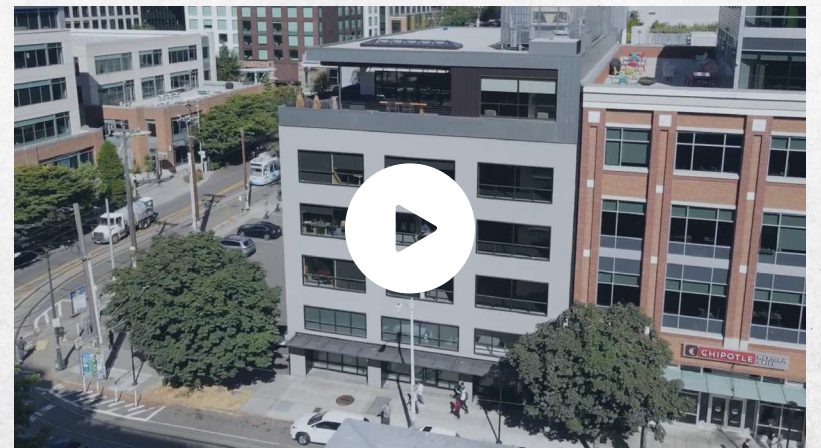
SIGNAGE OPPORTUNITIES



Great signage opportunities with visibility
from Westlake Ave N and Thomas St.



Up to 7,000 views per day on
Westlake Ave N.

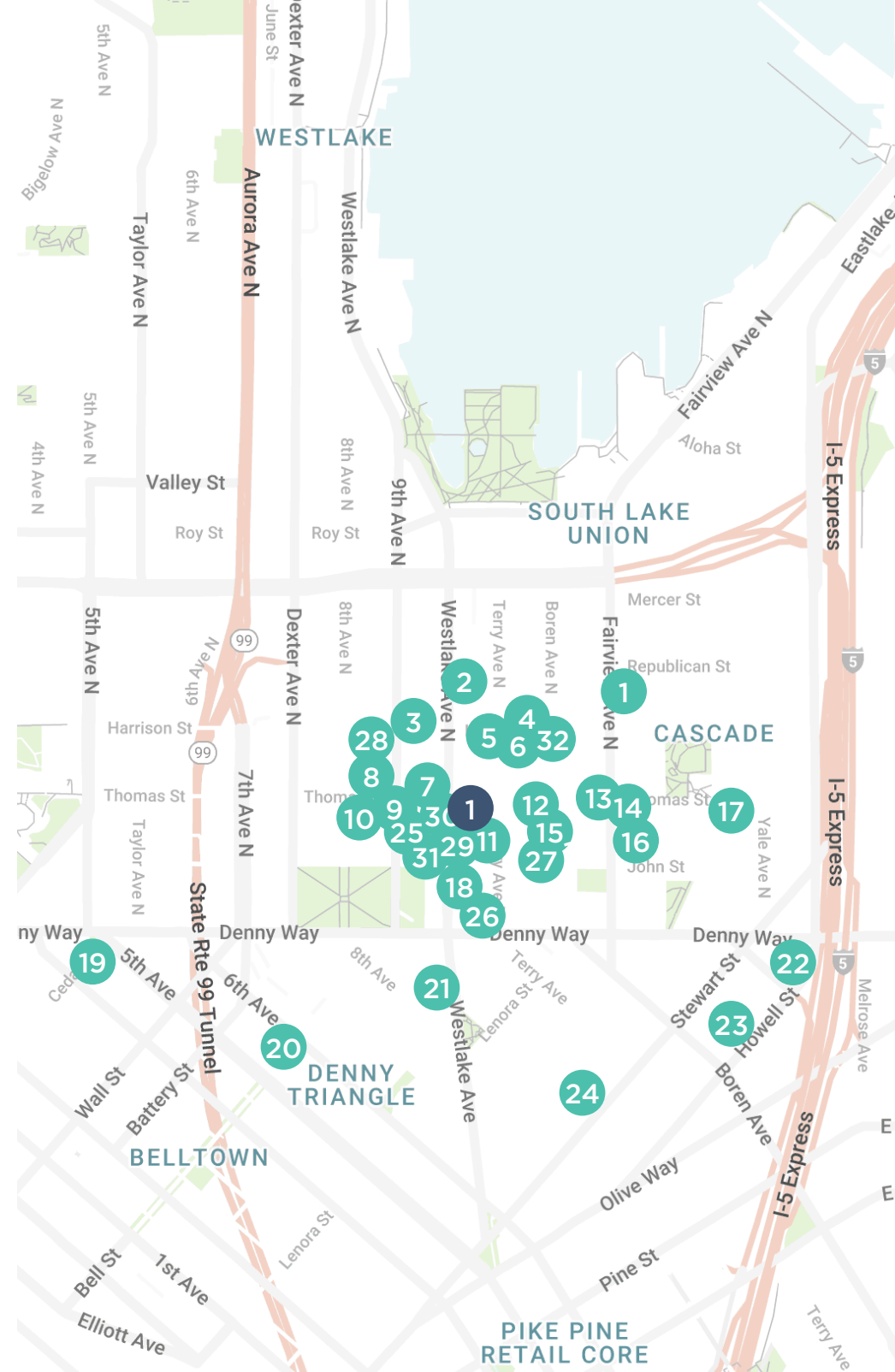


NEARBY AMENITIES

1. 224 Westlake Ave N

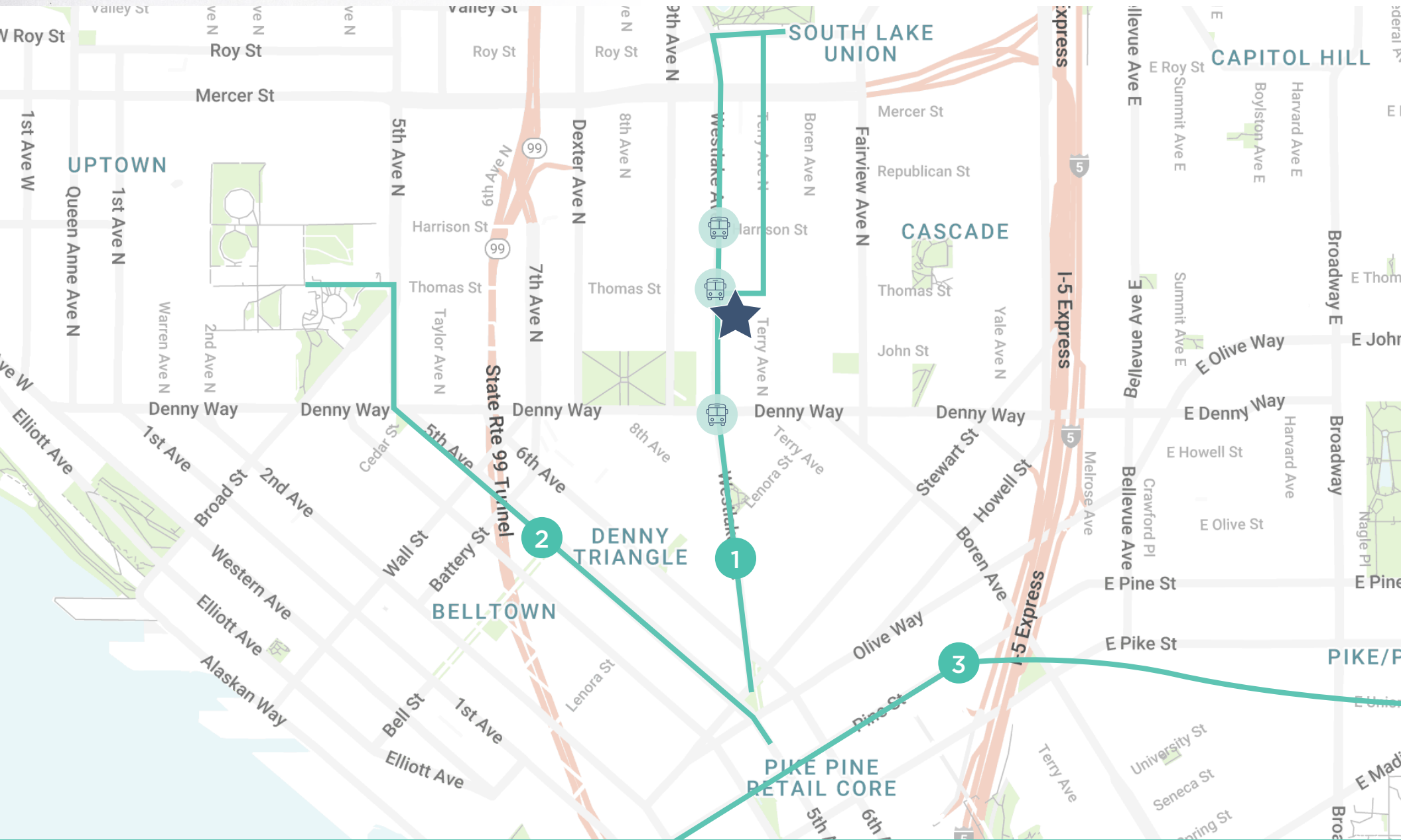
Restaurants and Cafés

1. mbar
2. The Berliner Döner Kebab
3. Sam's Tavern
4. LOCAL Public Eatery Terry Ave
5. Portage Bay Cafe - South Lake Union
6. Cactus South Lake Union
7. Local Coffee Spot- Westlake
8. Cafe An'Clair - 9th & Thomas
9. Thomas Street Warehouse
10. Gold Bar
11. Chipotle Mexican Grill
12. Evergreens Salad
13. Cascade Coffee Works
14. El Grito Taqueria
15. Stella Fiore Wood Fired Pizza
16. Mala & Satay
17. Lunchbox Lab Burgers, Shakes and Bar
18. Sushi Katsu-ya
19. The 5 Point Cafe | 24 Hour Legendary Dive Bar & Diner
20. Fulcrum Café
21. The Butcher's Table
22. RAZZÍ'S PIZZERIA DOWNTOWN
23. Keys on Main
24. Grumpy Bean
25. Jack's BBQ - SLU
26. Barry's Seattle
27. Thai Thani Kitchen
28. Hurry Curry of Tokyo - South Lake Union
29. Homegrown
30. BB's Teriyaki Grill
31. canteenM
32. Zoka Coffee



TRANSIT MAP

1. Streetcar: Fairview/Aloha - Westlake/McGraw
2. Seattle Monorail
3. Light Rail



224

WESTLAKE

224 Westlake Ave N Seattle, WA 98109

NEWMARK

CHARLIE FARRA

206.999.2928

charlie.farra@nmrk.com

DANIEL SEGER

206.487.5163

daniel.seger@nmrk.com