

29,250 SF

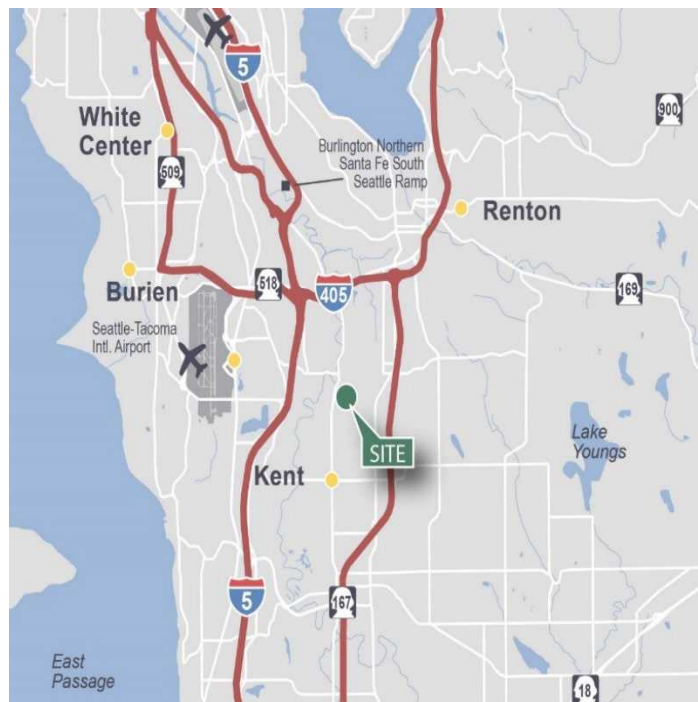
Industrial Space For Lease



Prologis Park Kent 49



6846 S 190th St
Kent, WA 98032 USA



LOCATION

- Centrally Located in Kent
- Strong Corporate Image
- Easy Access to I-5 and SR-167

FACILITY

- 29,250 SF Shell
- 744 SF Office
- 7 Dock High Doors
- 3 Rail Doors
- 22' x 49'6" Typical Column Spacing
- 24' Clear Height
- Available now

ADVANTAGES AND AMENITIES

- Access to the Prologis Essentials platform, which includes:

[Operations Essentials](#)

[Energy Essentials](#)

[Workforce Essentials](#)

[Mobility Essentials](#)

[Digital Essentials](#)

Your single-source service for efficient move-in

29,250 SF

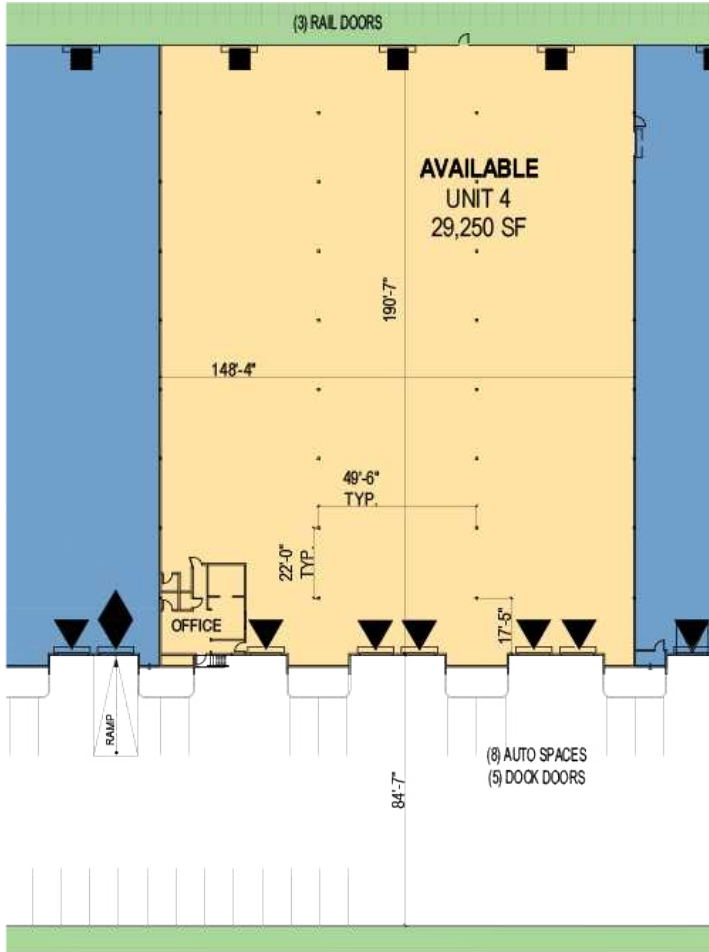
and operations: prologisessentials.com



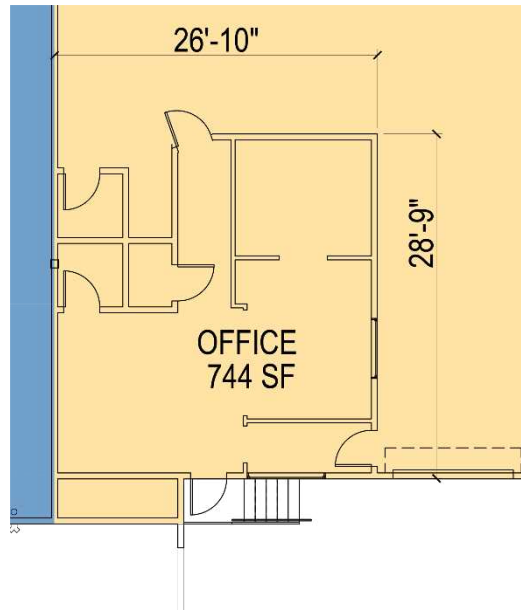
Industrial Space For Lease

Prologis Park Kent 49

FLOOR PLAN



OFFICE PLAN



SITE PLAN



Cushman & Wakefield

Patrick Mullin
patrick.mullin@cushwake.com
ph +1 206 521 0265
cell +1 206 518 8117
601 Union Street
Suite 1100
Seattle, WA 98101 USA

Cushman & Wakefield

Scott Alan, SIOR
scott.alan@cushwake.com
ph +1 206 521 0236
cell +1 206 605 2396
601 Union Street
Suite 1100
Seattle, WA 98101 USA

Prologis

Lucca Merlino
lmerlino@prologis.com
ph +1 206 414 7621
cell +1 206 498 6511
33930 Weyerhaeuser Way S
Suite 100
Federal Way, WA 98001 USA