

FOR LEASE

10320 122ND ST E

PUYALLUP, WA 98374



Functional building with ample yard & parking area, located in Puyallup

±4,000 SF building on 1.96 acres of land

Metal construction

Four service bays

UCOR zoning

Paved/graveled and secured yard area

Close proximity to SR-512

Two access points to S Meridian Ave

CALL

FOR RATES

UCOR

ZONING

NOW

AVAILABLE

HUNTER CLARKE
253.722.1452
hunter.clarke@kidder.com

TY CLARKE
253.722.1419
ty.clarke@kidder.com

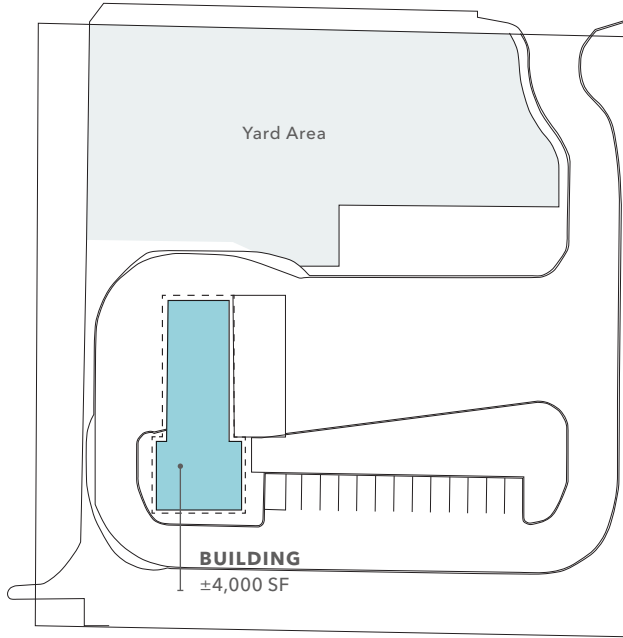
TODD CLARKE
253.722.1422
todd.clarke@kidder.com

KIDDER.COM

This information supplied herein is from sources we deem reliable. It is provided without any representation, warranty, or guarantee, expressed or implied as to its accuracy. Prospective Buyer or Tenant should conduct an independent investigation and verification of all matters deemed to be material, including, but not limited to, statements of income and expenses. Consult your attorney, accountant, or other professional advisor.

km Kidder
Mathews

FOR LEASE



±4,000 SF

BUILDING SF

1.96

ACRES LAND

NOW

AVAILABLE

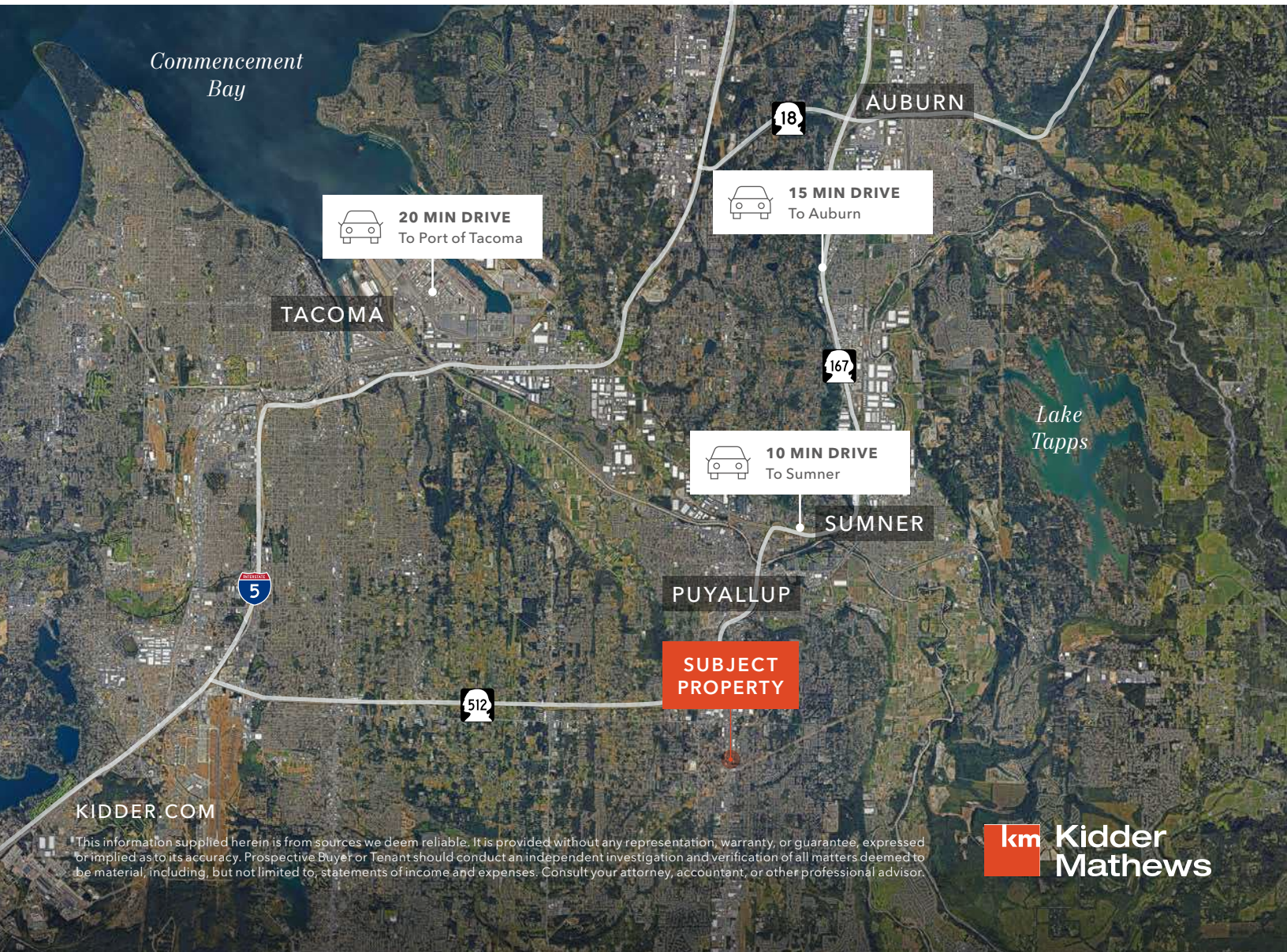


KIDDER.COM

This information supplied herein is from sources we deem reliable. It is provided without any representation, warranty, or guarantee, expressed or implied as to its accuracy. Prospective Buyer or Tenant should conduct an independent investigation and verification of all matters deemed to be material, including, but not limited to, statements of income and expenses. Consult your attorney, accountant, or other professional advisor.



FOR LEASE



This information supplied herein is from sources we deem reliable. It is provided without any representation, warranty, or guarantee, expressed or implied as to its accuracy. Prospective Buyer or Tenant should conduct an independent investigation and verification of all matters deemed to be material, including, but not limited to, statements of income and expenses. Consult your attorney, accountant, or other professional advisor.

