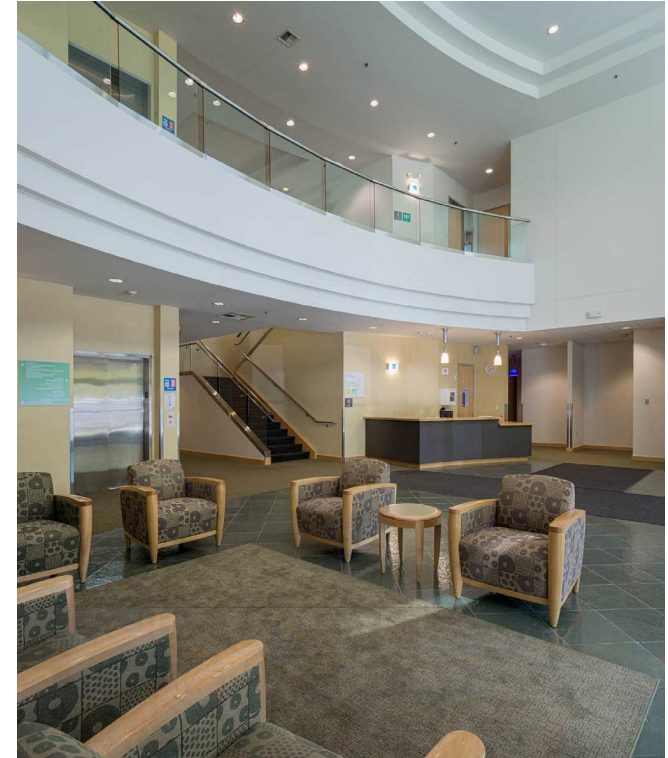


Intergate Technical Park - Building A

12401 East Marginal Way S., Seattle, WA 98168

TOTAL AVAILABLE SPACE – 19,289 RSF



**INTERGATE TECHNICAL PARK - HIGH EFFICIENCY ENVIRONMENT
PERFECT FOR FLEX-TECH AND LIGHT MANUFACTURING**

NEWMARK

Thad Mallory, SIOR
Vice Chairman
425.362.1410
thad.mallory@nrmk.com

Cavan O'Keefe
Senior Managing Director
206.395.2903
cavan.okeefe@nrmk.com

Jesse Ottele
Executive Managing Director
206.452.5429
jesse.ottele@nrmk.com

Evan Lugar
Senior Managing Director
425.362.1403
evan.lugar@nrmk.com

sabey

12201 Tukwila International Blvd. 4th Floor
Seattle, WA 98168

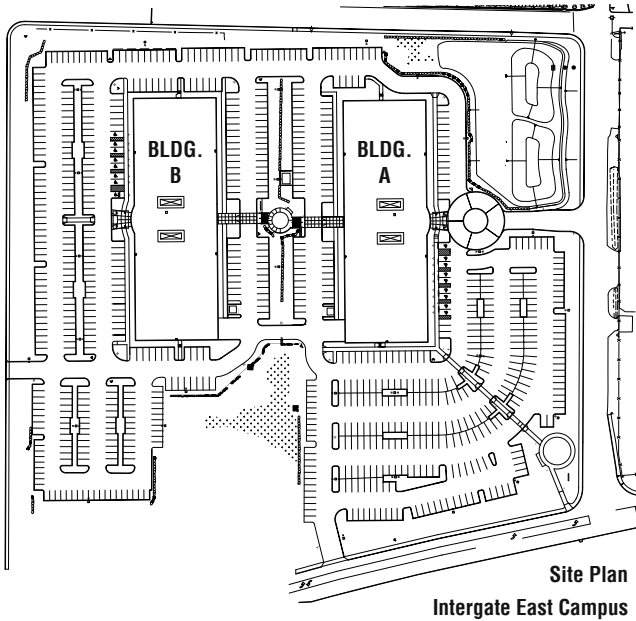
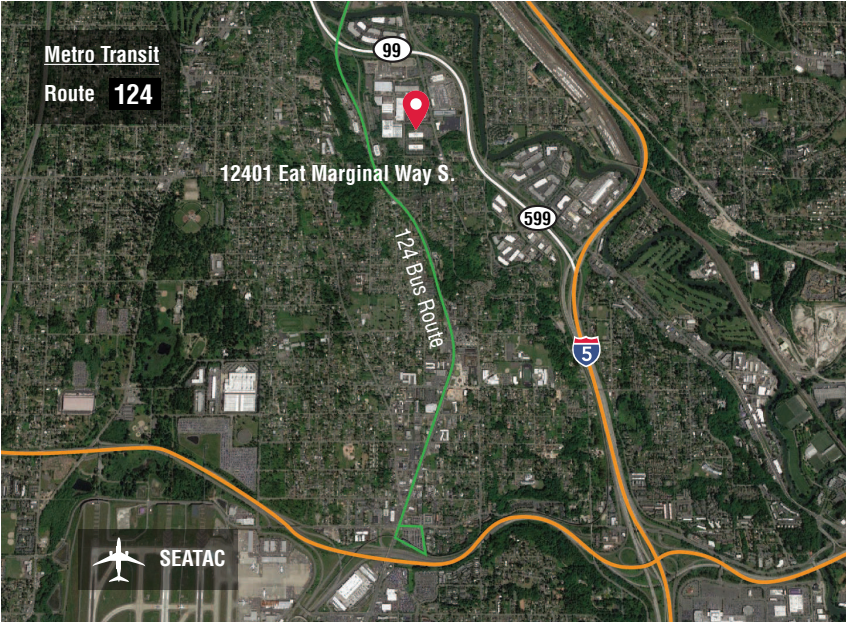
Intergate Technical Park - Building A

12401 East Marginal Way S., Seattle, WA 98168

TOTAL AVAILABLE SPACE – 19,289 RSF



**HIGH QUALITY
OFFICE
MULTI-PURPOSE
SPACE**



- Highlights**
- Each building is 83,414 sf rentable
 - Well-appointed reception area and elevator lobbies
 - Three stairwells with one passenger elevator
 - Spacious cafeteria and dining room
 - Floor to ceiling heights – 10'
 - Generous column spacing – 31' x 30'
 - Large floor plates
 - Low operating costs
 - Ample free parking
 - Great accessibility

Two 2-story buildings on private 12 acre campus setting. Surrounded by lush, mature landscaping. Sidewalks, stairs and outdoor seating area connect the buildings. Graceful porticoes define and shelter the entrances of each. Ample surface parking on campus. Signage options available.



Thad Mallory, SIOR
Vice Chairman
425.362.1410
thad.mallory@nmrk.com

Cavan O'Keefe
Senior Managing Director
206.395.2903
cavan.okeefe@nmrk.com

Jesse Ottele
Executive Managing Director
206.452.5429
jesse.ottele@nmrk.com

Evan Lugar
Senior Managing Director
425.362.1403
evan.lugar@nmrk.com



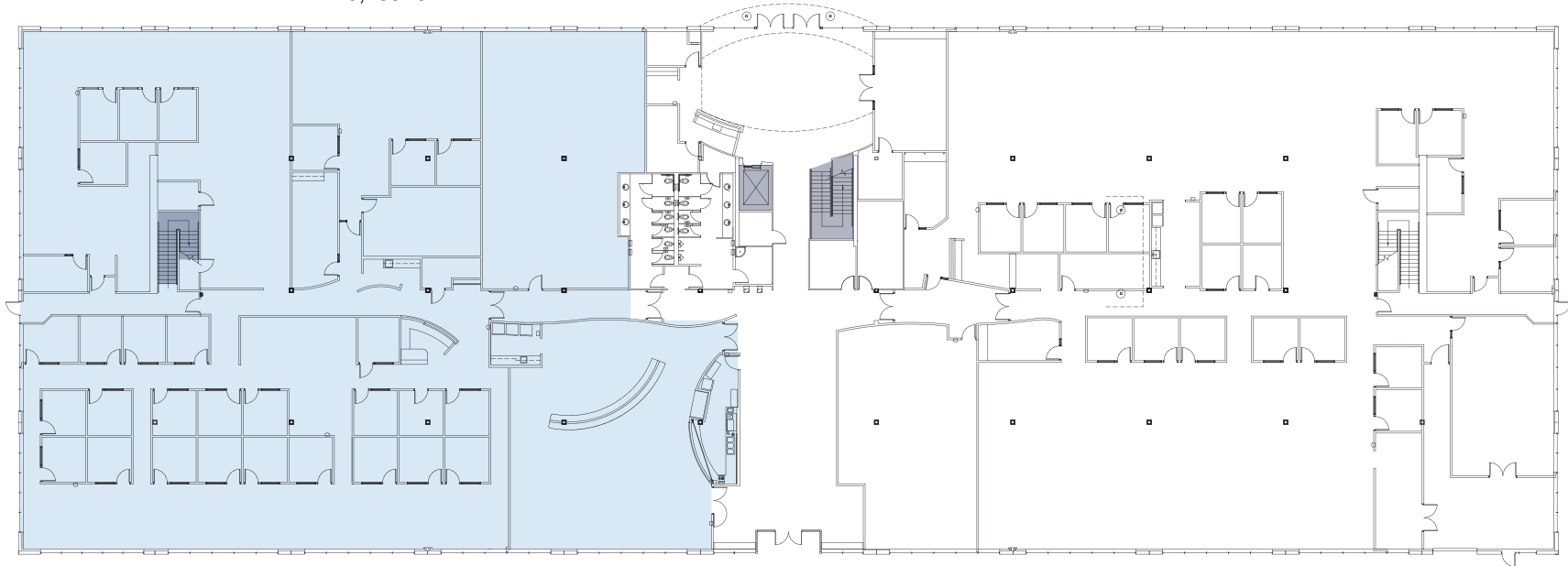
12201 Tukwila International Blvd. 4th Floor
Seattle, WA 98168

Intergate Technical Park - Building A

12401 East Marginal Way S., Seattle, WA 98168

TOTAL AVAILABLE SPACE – 19,289 RSF

Suite 110
19,289 rsf



Floor 1 | Available space - 19,289 rsf

