

Riverfront Technical Park

2811 South 102nd, Floor 2

TOTAL AVAILABLE SPACE

SUITE 200 – 14,183 RSF



**IDEAL FOR OFFICE, RESEARCH & DEVELOPMENT
AND CALL CENTERS**

NEWMARK

Thad Mallory, SIOR
Vice Chairman
425.362.1410
thad.mallory@nmrk.com

Cavan O'Keefe
Senior Managing Director
206.395.2903
cavan.okeefe@nmrk.com

Jesse Ottele
Executive Managing Director
206.452.5429
jesse.ottele@nmrk.com

The Sabey logo consists of a stylized 'S' icon followed by the word "sabey" in a bold, lowercase sans-serif font.

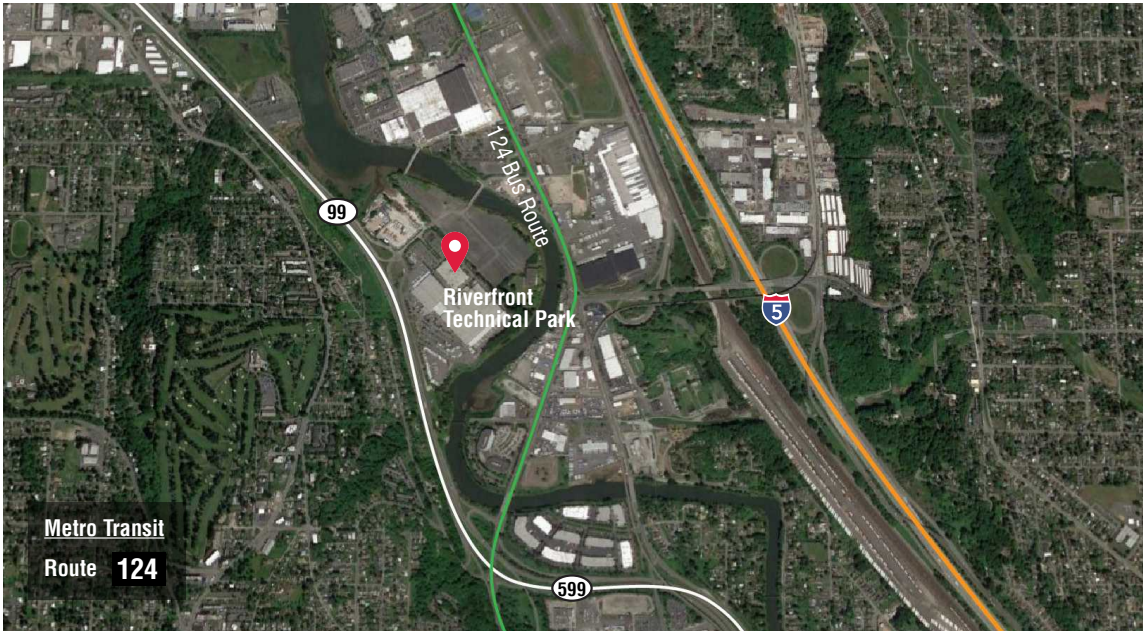
12201 Tukwila International Blvd. 4th Floor
Seattle, WA 98168

Riverfront Technical Park

2811 South 102nd, Floor 2

TOTAL AVAILABLE SPACE

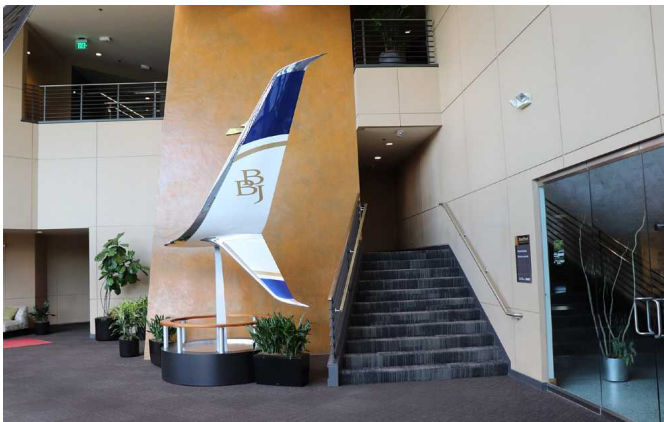
SUITE 200 – 14,183 RSF



Riverfront Technical park is a 175,000 SF office/flex building located in the South Seattle area, with easy access to I-5, I-405, Hwy 99 and East Marginal Way. It's proximity to Boeing Field has made it attractive to the aeronautics industry. In addition to great location, Riverfront Technical offers excellent parking and heavy electrical infrastructure making it also ideal for office, research & development and call centers.

Highlights

- Ample contiguous square footage
- Minutes to downtown Seattle, SeaTac Airport and Boeing Field
- Abundant parking
- Secure card access
- Multiple fiber carriers
- Loading dock
- Immediately adjacent to US Post Office



**CLOSE PROXIMITY TO
BOEING FIELD**

NEWMARK

Thad Mallory, SIOR
Vice Chairman
425.362.1410
thad.mallory@nmrk.com

Cavan O'Keefe
Senior Managing Director
206.395.2903
cavan.okeefe@nmrk.com

Jesse Ottele
Executive Managing Director
206.452.5429
jesse.ottele@nmrk.com

sabey

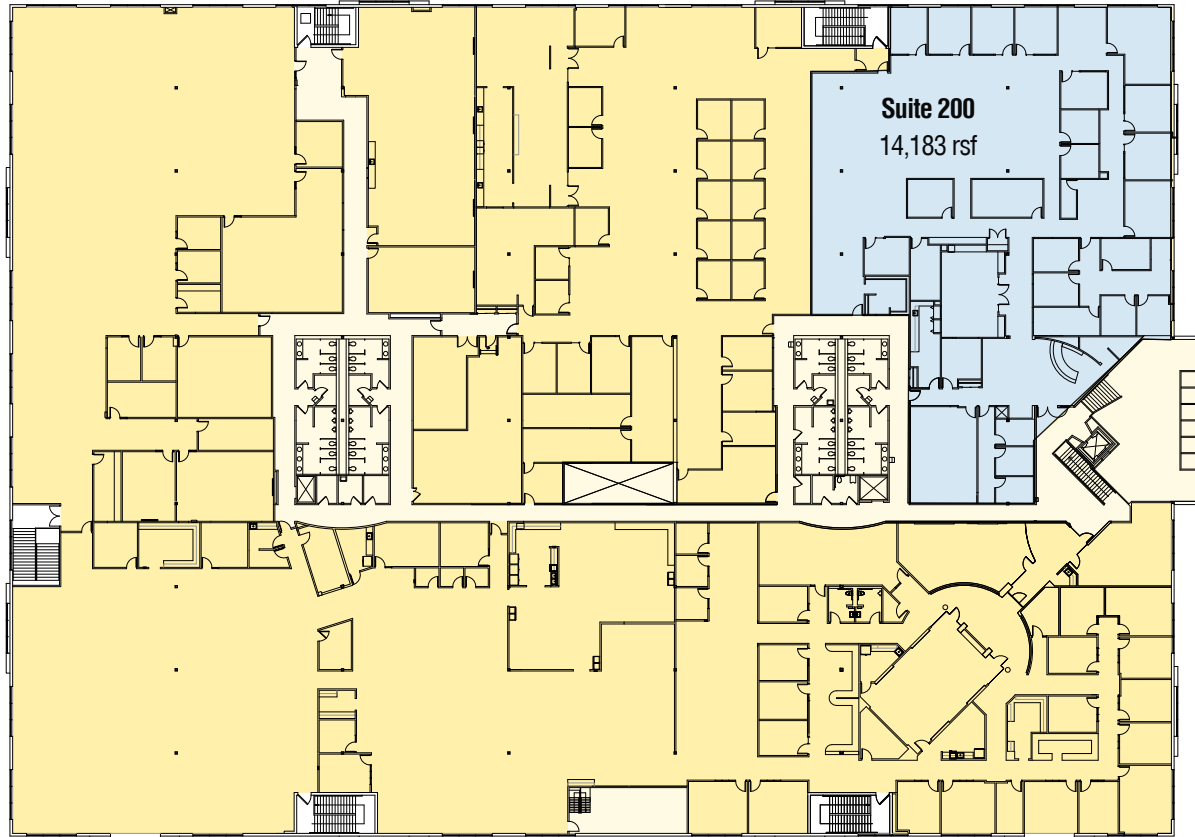
12201 Tukwila International Blvd. 4th Floor
Seattle, WA 98168

Riverfront Technical Park




2811 South 102nd, Floor 2

TOTAL AVAILABLE SPACE

SUITE 200 – 14,183 RSF



Floor 2 | Available space - 14,183 rsf

 Total Available Space  Leased  Common Area