

# ROWE BUILDING MULTI-USE SPACE



*Office/Light  
Manufacturing  
For Lease*

*2,238*  
AVAILABLE SF

*\$1.25*  
PSF, NNN

*NOW*  
AVAILABLE

Mezzanine office/light manufacturing space in former Ballard Brass building

Corner of 11th Ave & NW 50th St

Mostly open space with 10'-12' ceilings

Two restrooms, one conference room

Fully sprinklered

\$1.25/SF, NNN (\$0.26/SF)

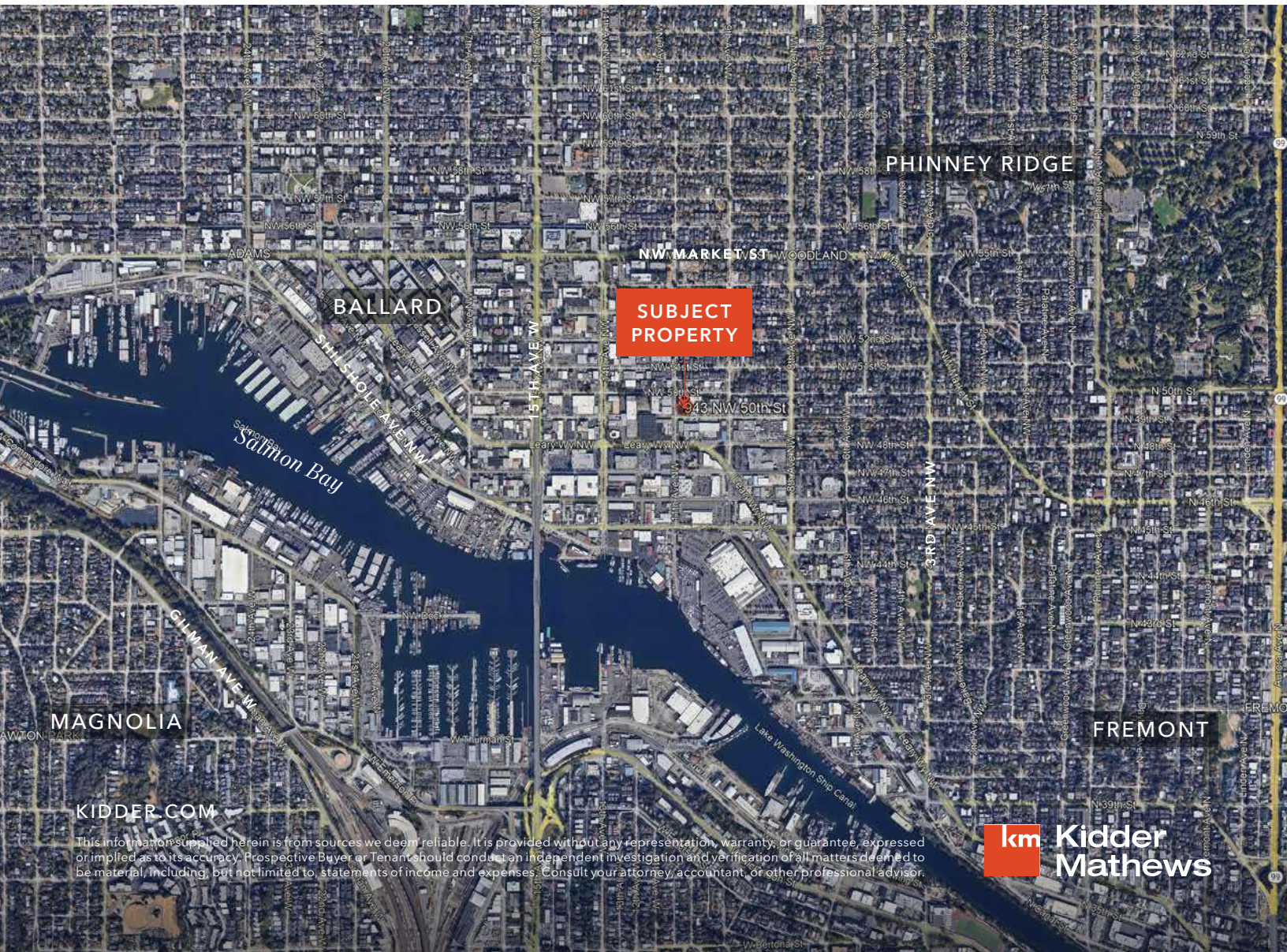
**JEFF LOFTUS**  
206.248.7326  
jeff.loftus@kidder.com

**KEN HIRATA**  
206.296.9625  
ken.hirata@kidder.com

**KIDDER.COM**

This information supplied herein is from sources we deem reliable. It is provided without any representation, warranty, or guarantee, expressed or implied as to its accuracy. Prospective Buyer or Tenant should conduct an independent investigation and verification of all matters deemed to be material, including, but not limited to, statements of income and expenses. Consult your attorney, accountant, or other professional advisor.

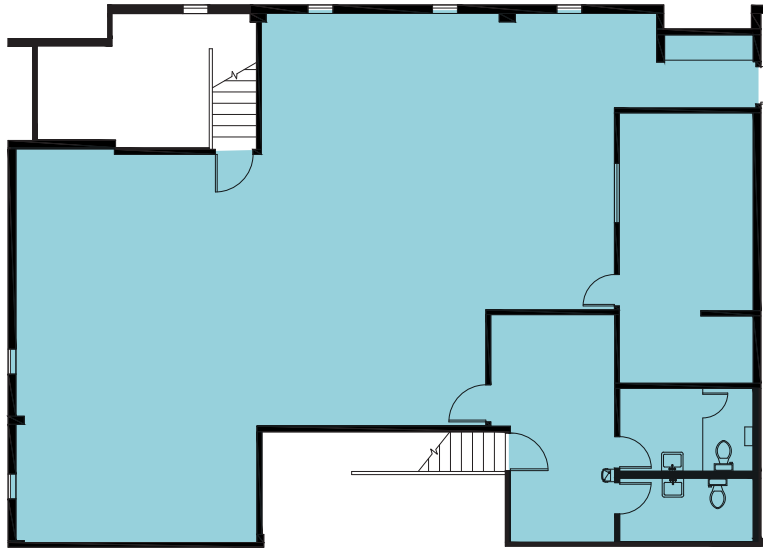
# ROWE BUILDING



This information supplied herein is from sources we deem reliable. It is provided without any representation, warranty, or guarantee, expressed or implied as to its accuracy. Prospective Buyer or Tenant should conduct an independent investigation and verification of all matters deemed to be material, including, but not limited to, statements of income and expenses. Consult your attorney, accountant, or other professional advisor.



ROWE BUILDING



2,238 SF

AVAILABLE

\$1.25

PSF, NNN

10'+

AVAILABLE



KIDDER.COM

This information supplied herein is from sources we deem reliable. It is provided without any representation, warranty, or guarantee, expressed or implied as to its accuracy. Prospective Buyer or Tenant should conduct an independent investigation and verification of all matters deemed to be material, including, but not limited to, statements of income and expenses. Consult your attorney, accountant, or other professional advisor.

