

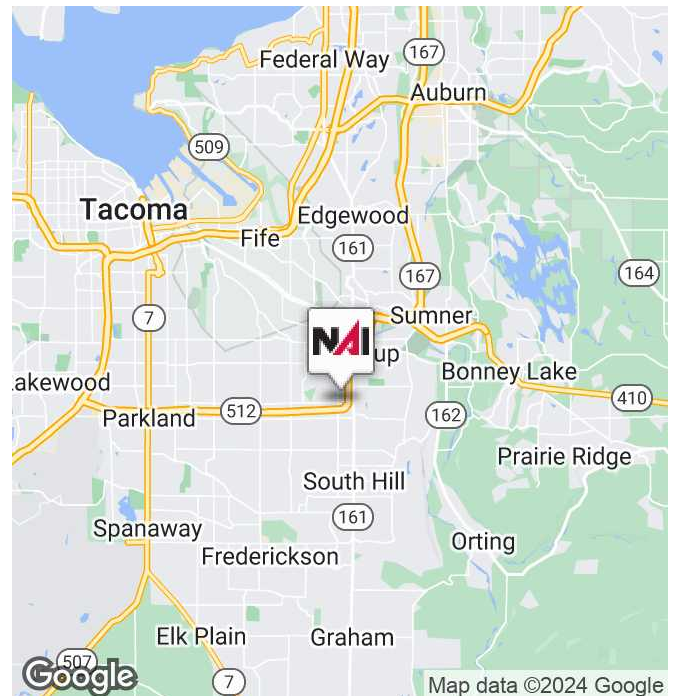


# 716 S Hill Park Drive

Puyallup, Washington 98373

## Property Highlights

- Available Suite:  
Suite C - 6,502 SF (existing office & medical TI)
- Generous free parking within large commercial center
- Freeway monument and building signage
- Convenient N. Pierce location at crown of South Hill, Puyallup
- Easy access to SR-512 and South Hill Regional Mall
- General Commercial (CG) Zoning - multiple uses allowed
- CALL LISTING BROKER FOR RATES



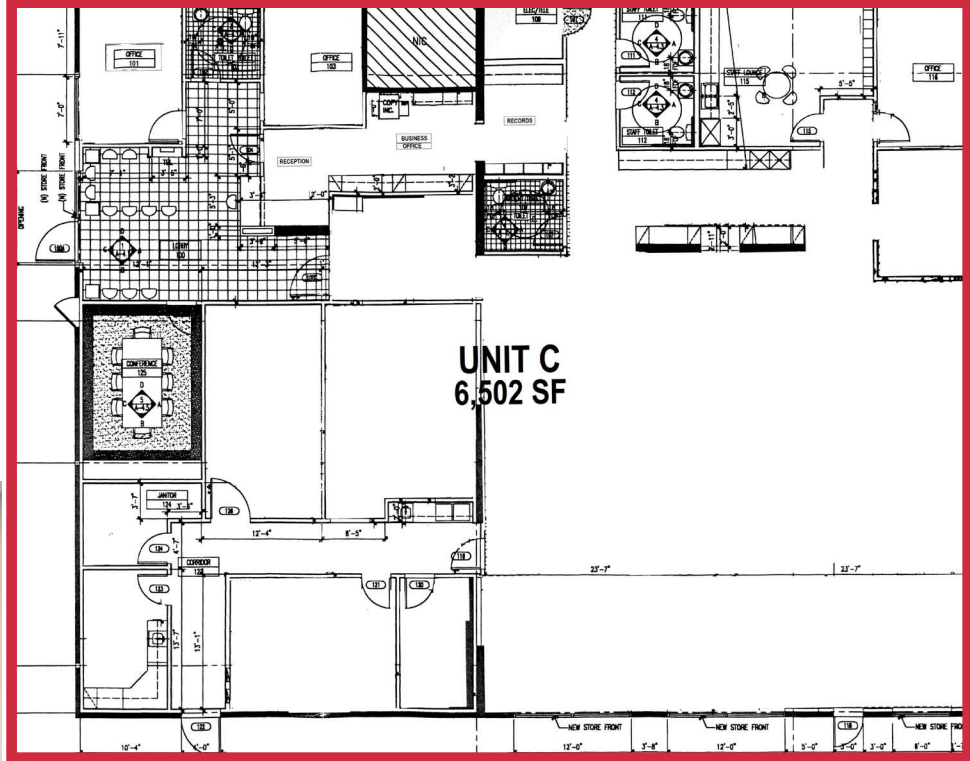
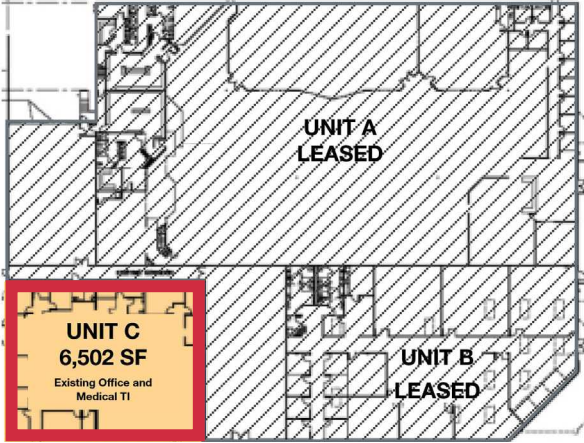
**Kim Marvik**

Partner | 253.203.1325  
kmarvik@nai-psp.com

**Andrea Peterson**

253.383.1329  
apeterson@nai-psp.com

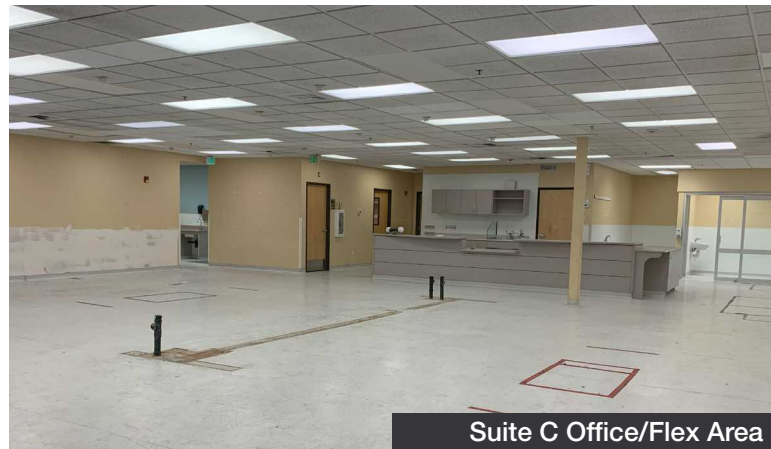




Suite C Reception Area



Suite C Retail Entry



Suite C Office/Flex Area

**Kim Marvik**  
Partner | 253.203.1325  
kmarvik@nai-psp.com

**Andrea Peterson**  
253.383.1329  
apeterson@nai-psp.com





Potential Loading Access



Pylon Sign Facing Highway 512



Google

**Kim Marvik**  
Partner | 253.203.1325  
kmarvik@nai-psp.com

**Andrea Peterson**  
253.383.1329  
apeterson@nai-psp.com

