



FOR LEASE

Three Tree Medical Arts Building

16259 SYLVESTER ROAD SW, BURIEN, WA



On Virginia Mason Franciscan Health's St. Anne Hospital campus

BRIAN CLAPP
206.248.7316
brian.clapp@kidder.com

SPENCER CLAPP
206.248.7427
spencer.clapp@kidder.com

**Kidder
Mathews**

Building owned and managed by
HEALTHCARE REALTY

This information supplied herein is from sources we deem reliable. It is provided without any representation, warranty, or guarantee, expressed or implied as to its accuracy. Prospective Buyer or Tenant should conduct an independent investigation and verification of all matters deemed to be material, including, but not limited to, statements of income and expenses. Consult your attorney, accountant, or other professional advisor.

KIDDER.COM

FOR LEASE

Three Tree Medical Arts Building

16259 SYLVESTER ROAD SW, BURIEN, WA



SW SEATTLE
AMBULATORY
SURGERY CENTER

HIGHLINE
MEDICAL
PAVILION



VIRGINIA MASON
FRANCISCAN HEALTH'S
ST. ANNE HOSPITAL
CAMPUS

DIRECT

INTERNAL BUILDING ACCESS
TO ST. ANNE HOSPITAL

QUALITY

MEDICAL BUILD-OUT

ABUNDANT

SURFACE & GARAGE PARKING

AVAILABLE

SPACES FROM
797 RSF TO 9,691 RSF

ON CAMPUS

AT VIRGINIA MASON FRANCISCAN
HEALTH'S ST. ANNE HOSPITAL

ACCESS

FROM SR-518, SR-509, I-405, & I-5

KIDDER.COM

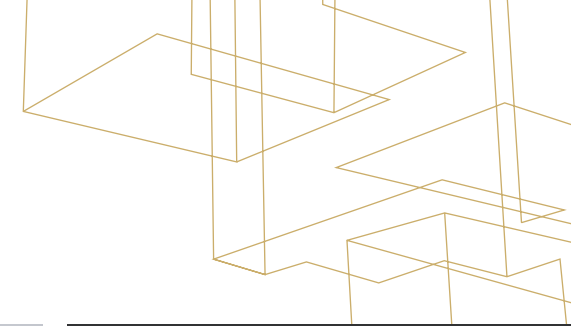
This information supplied herein is from sources we deem reliable. It is provided without any representation, warranty, or guarantee, expressed or implied as to its accuracy. Prospective Buyer or Tenant should conduct an independent investigation and verification of all matters deemed to be material, including, but not limited to, statements of income and expenses. Consult your attorney, accountant, or other professional advisor.

km Kidder
Mathews

FOR LEASE

Three Tree Medical Arts Building

16259 SYLVESTER ROAD SW, BURIEN, WA



3,194 RSF

SUITE 302

4,382 RSF

SUITE 303

3,519 RSF

SUITE 304 CAN BE COMBINED
WITH SUITE 303B FOR ±5,901 RSF

933 RSF

SUITE 402

797 RSF

SUITE 403 MOVE-IN READY

2,433 RSF

SUITE 404 CAN BE COMBINED
WITH SUITE 403 FOR 3,230 RSF

2,446 RSF

SUITE 505

KIDDER.COM

This information supplied herein is from sources we deem reliable. It is provided without any representation, warranty, or guarantee, expressed or implied as to its accuracy. Prospective Buyer or Tenant should conduct an independent investigation and verification of all matters deemed to be material, including, but not limited to, statements of income and expenses. Consult your attorney, accountant, or other professional advisor.

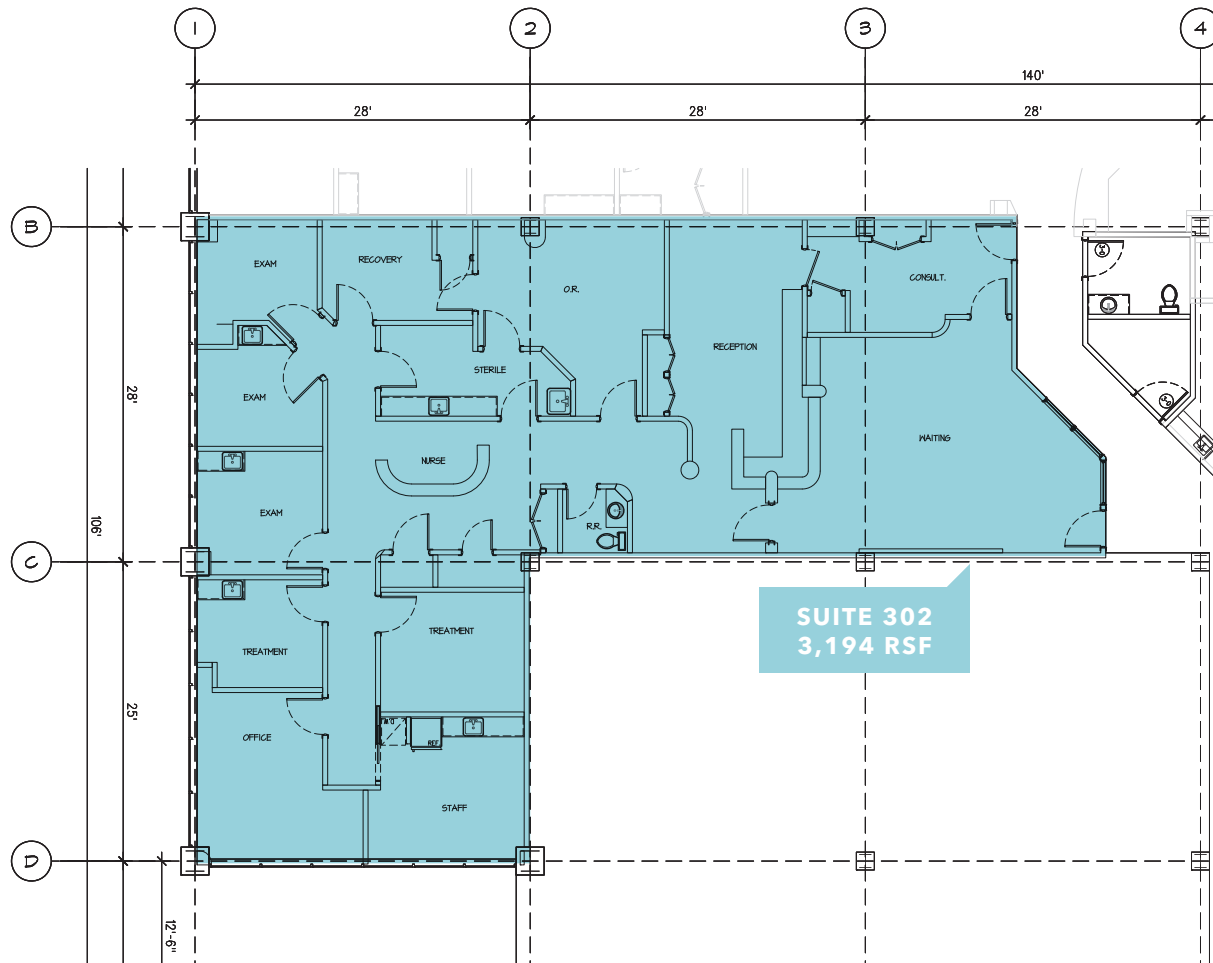
 **Kidder
Mathews**

FOR LEASE

Three Tree Medical Arts Building

16259 SYLVESTER ROAD SW, BURIEN, WA

Suite 302 Floor Plan



3,194 RSF

SUITE 302

BRIAN CLAPP

206.248.7316

brian.clapp@kidder.com

SPENCER CLAPP

206.248.7427

spencer.clapp@kidder.com

KIDDER.COM

This information supplied herein is from sources we deem reliable. It is provided without any representation, warranty, or guarantee, expressed or implied as to its accuracy. Prospective Buyer or Tenant should conduct an independent investigation and verification of all matters deemed to be material, including, but not limited to, statements of income and expenses. Consult your attorney, accountant, or other professional advisor.

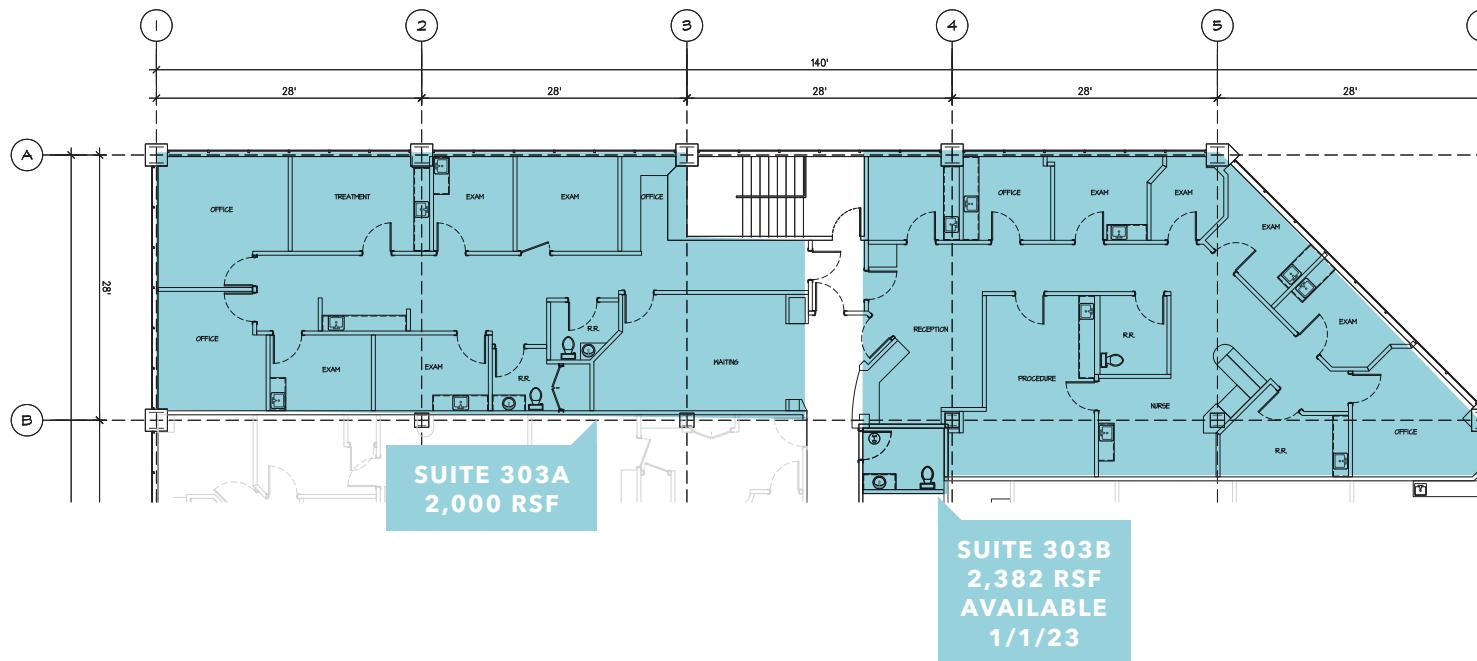


FOR LEASE

Three Tree Medical Arts Building

16259 SYLVESTER ROAD SW, BURIEN, WA

Suite 303 Floor Plan



4,382 RSF

SUITE 303A & 303B

2,000 RSF

SUITE 303A

2,382 RSF

SUITE 303B

(AVAILABLE 1/1/23)

CAN BE COMBINED WITH SUITE 304 FOR 5,901 RSF

BRIAN CLAPP

206.248.7316

brian.clapp@kidder.com

SPENCER CLAPP

206.248.7427

spencer.clapp@kidder.com

KIDDER.COM

This information supplied herein is from sources we deem reliable. It is provided without any representation, warranty, or guarantee, expressed or implied as to its accuracy. Prospective Buyer or Tenant should conduct an independent investigation and verification of all matters deemed to be material, including, but not limited to, statements of income and expenses. Consult your attorney, accountant, or other professional advisor.

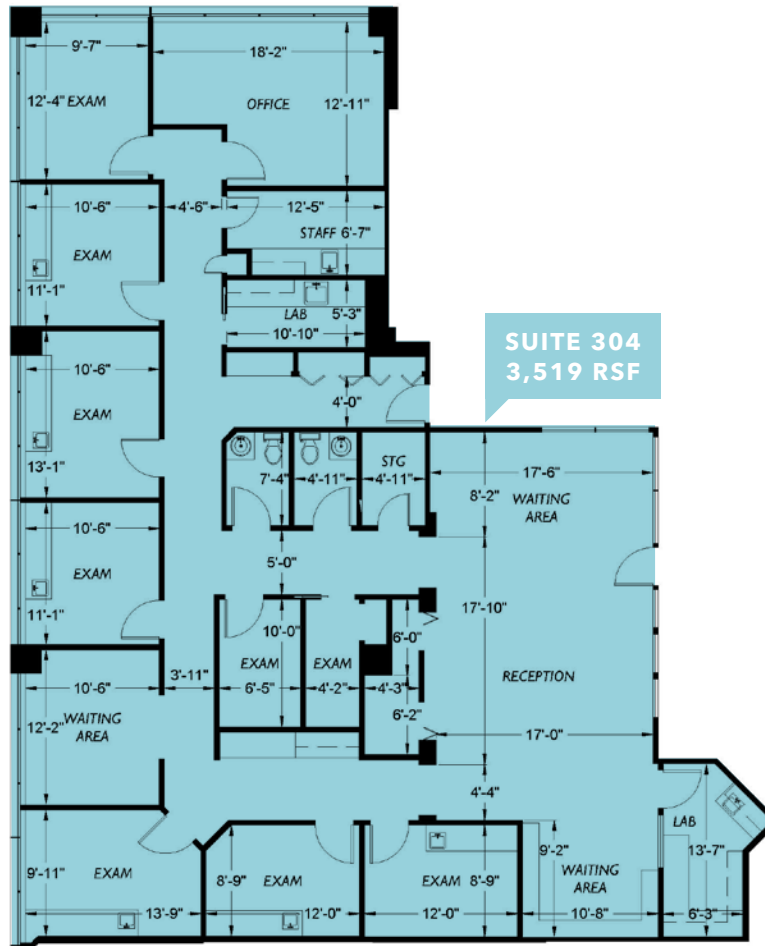
km Kidder Mathews

FOR LEASE

Three Tree Medical Arts Building

16259 SYLVESTER ROAD SW, BURIEN, WA

Suite 304 Floor Plan



3,519 RSF

AVAILABLE 2/1/23

5,901 RSF

WHEN COMBINED WITH SUITE
303B

BRIAN CLAPP

206.248.7316

brian.clapp@kidder.com

SPENCER CLAPP

206.248.7427

spencer.clapp@kidder.com

KIDDER.COM

This information supplied herein is from sources we deem reliable. It is provided without any representation, warranty, or guarantee, expressed or implied as to its accuracy. Prospective Buyer or Tenant should conduct an independent investigation and verification of all matters deemed to be material, including, but not limited to, statements of income and expenses. Consult your attorney, accountant, or other professional advisor.

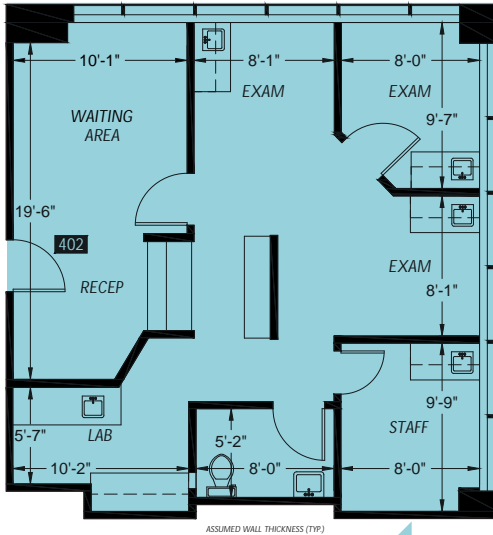
km Kidder
Mathews

FOR LEASE

Three Tree Medical Arts Building

16259 SYLVESTER ROAD SW, BURIEN, WA

Suite 402 Floor Plan



SUITE 402
933 RSF



933 RSF

SUITE 402

BRIAN CLAPP

206.248.7316

brian.clapp@kidder.com

SPENCER CLAPP

206.248.7427

spencer.clapp@kidder.com

KIDDER.COM

This information supplied herein is from sources we deem reliable. It is provided without any representation, warranty, or guarantee, expressed or implied as to its accuracy. Prospective Buyer or Tenant should conduct an independent investigation and verification of all matters deemed to be material, including, but not limited to, statements of income and expenses. Consult your attorney, accountant, or other professional advisor.

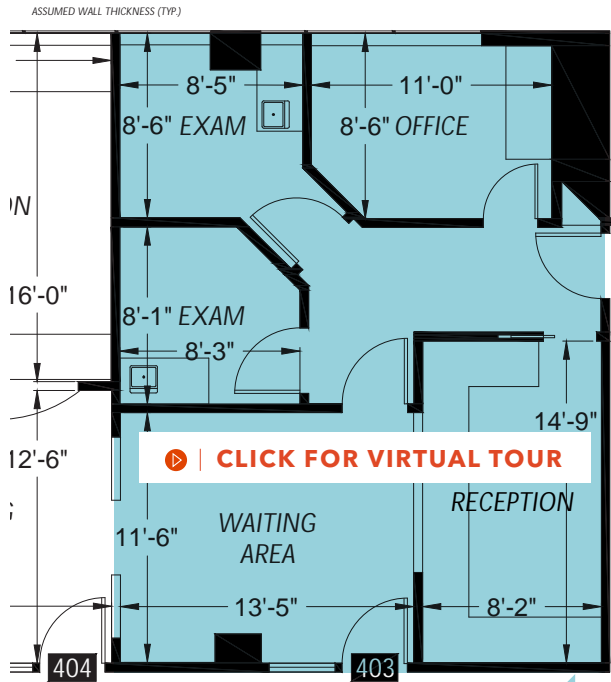
km Kidder
Mathews

FOR LEASE

Three Tree Medical Arts Building

16259 SYLVESTER ROAD SW, BURIEN, WA

Suite 403 Floor Plan | Move-in-Ready



[▶ | CLICK FOR VIRTUAL TOUR](#)

SUITE 403
797 RSF



797 RSF

SUITE 403

MOVE-IN-READY

BRIAN CLAPP

206.248.7316

brian.clapp@kidder.com

SPENCER CLAPP

206.248.7427

spencer.clapp@kidder.com

KIDDER.COM

This information supplied herein is from sources we deem reliable. It is provided without any representation, warranty, or guarantee, expressed or implied as to its accuracy. Prospective Buyer or Tenant should conduct an independent investigation and verification of all matters deemed to be material, including, but not limited to, statements of income and expenses. Consult your attorney, accountant, or other professional advisor.

km Kidder Mathews

FOR LEASE

Three Tree Medical Arts Building

16259 SYLVESTER ROAD SW, BURIEN, WA

Suite 404 Floor Plan



2,433 RSF

SUITE 404

3,230 RSF

SUITE 403 (CAN BE COMBINED WITH SUITE 404)

BRIAN CLAPP

206.248.7316

brian.clapp@kidder.com

SPENCER CLAPP

206.248.7427

spencer.clapp@kidder.com

KIDDER.COM

This information supplied herein is from sources we deem reliable. It is provided without any representation, warranty, or guarantee, expressed or implied as to its accuracy. Prospective Buyer or Tenant should conduct an independent investigation and verification of all matters deemed to be material, including, but not limited to, statements of income and expenses. Consult your attorney, accountant, or other professional advisor.

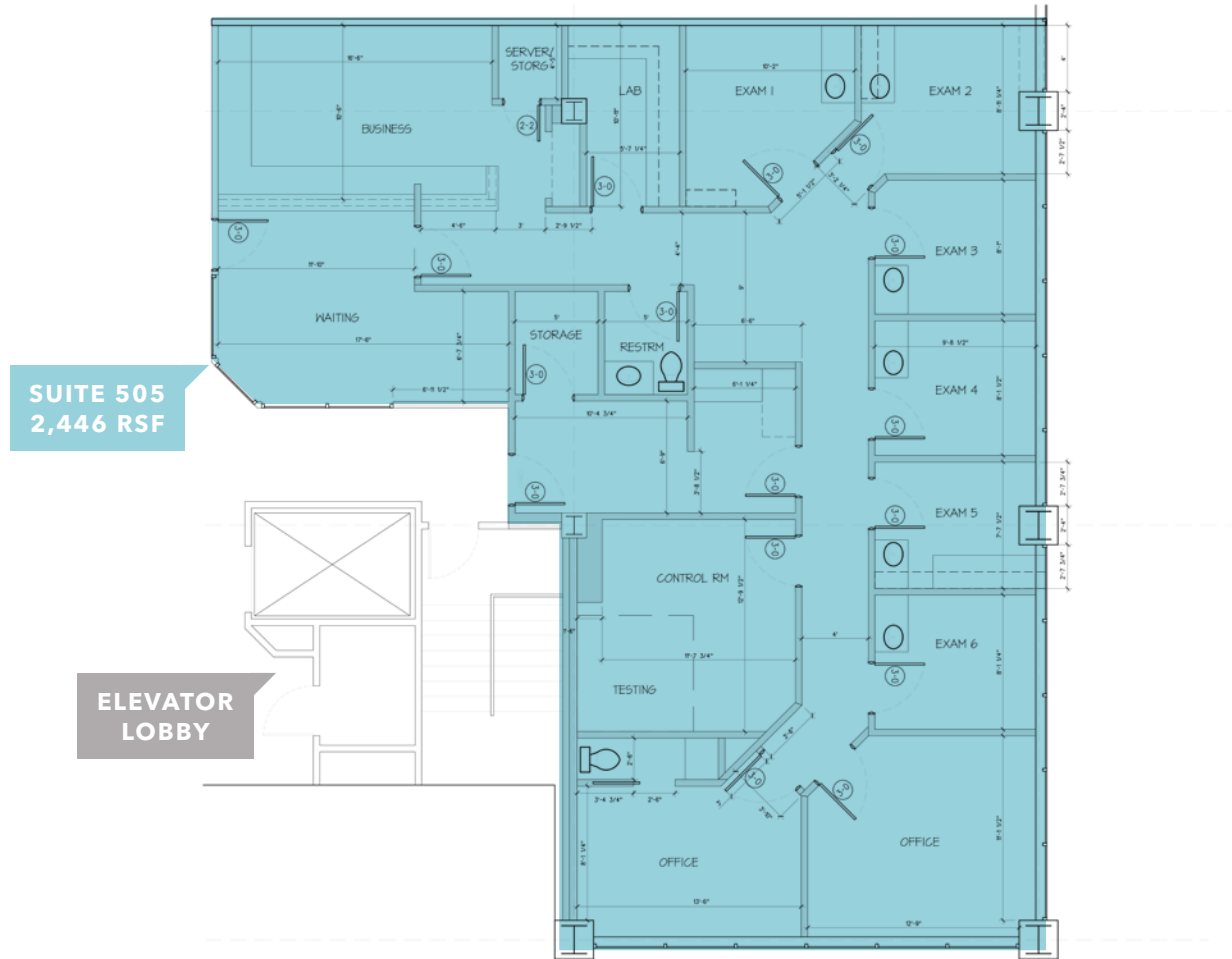
km Kidder Mathews

FOR LEASE

Three Tree Medical Arts Building

16259 SYLVESTER ROAD SW, BURIEN, WA

Suite 505 Floor Plan



2,446 RSF

SUITE 505

BRIAN CLAPP
206.248.7316
brian.clapp@kidder.com

SPENCER CLAPP
206.248.7427
spencer.clapp@kidder.com

KIDDER.COM

This information supplied herein is from sources we deem reliable. It is provided without any representation, warranty, or guarantee, expressed or implied as to its accuracy. Prospective Buyer or Tenant should conduct an independent investigation and verification of all matters deemed to be material, including, but not limited to, statements of income and expenses. Consult your attorney, accountant, or other professional advisor.

km Kidder Mathews